

HAMPSHIRE

Winter 2021 *Heartbeat*





AN UNFORGETTABLE YEAR

Watch our Facebook page for details about our private spring online sale with Willoughby!

Rare Debut

BOBENDRIER BOYS 19-60 RR
 First Place Yearling Ram, 2020 NAILE Open Fitted Hampshire Show
 Keep an eye out for his progeny in our future sales and show strings!



BOBENDRIER BOYS 20-10 RR

Champion Fitted Hampshire Ram & First Place January Ram, 2020 NAILE Jr. Fitted Hampshire Show
 Congratulations to Nicholas & Heather Wright, MN, for purchasing this exciting young stud!

Rare Nugget

Senior Champion & First Place Fall Ram, 2020 NAILE Open Fitted Hampshire Show
 Weighed 320 lbs at NAILE, measured 39.5 x 40 while still carrying his lamb teeth at 14 months of age!



BEST HEADED FEMALE

Bobendrier Hampshires also won best headed female at the 2020 NAILE Open Hampshire Show

THANK YOU

Head to our website, bobendrierhampshires.com for full results from Louisville!

thank you for trusting our programs

BOBENDRIER HAMPSHIRE BUYERS: Grant Basting, IL · Bauer Hampshires, KS · Adam Benker, MN · Randy Berens, SD · Brian Caraker, AR · Finder Hampshires, KS · Amy Halleran, IL · Kirchenbauer Hampshires, MN · Gary Loop, IL · Bruce Nickel, MN · Adel Ragheb, MN · Austin Schiefelbein, MN · William Taylor, MN · Nicolas & Heather Wright, MN · Gary Zidlicky, IA · **BOBENDRIER BOYS BUYERS:** Bauer Hampshires, KS · Nicholas & Heather Wright, MN · Dale & Brady Carter, MN · Charles Ramsdell, IL · Brian Fruechte Family, MN · Mike Firestine Family, PA · Nathan Robbins Family, ND · David Jutonen Family, SD · Kirchenbauer Hampshires, MN

BOBENDRIER HAMPSHIRE · 1607 90th Ave. Pipestone, MN 56164 · jcbobendrier@gmail.com · 507.825.4072
BOBENDRIER BOYS · 1351 Hwy 75 Pipestone, MN 56164 · shebob8@gmail.com · 507.215.0334

CONTENTS

- 4** **CALENDAR OF EVENTS**
A list of upcoming Hampshire events.
- 5** **PRESIDENT'S MESSAGE**
Updates from Katelyn Parsons.
- 6-7** **PULLIN FAMILY FEATURE**
A feature on Ron Pullin's Family.
- 9** **DR. THOMAS LEE HUBER OBITUARY**
Remembering Dr. Thomas Lee Huber.
- 11** **HAMPSHIRE ACROSS AMERICA**
Kickoff shows to the Hampshires Across American Point Series.
- 13** **HAMP REGISTRATION**
Hamp Registration by member and state in 2020.
- 15** **SCHOLARSHIP WINNERS**
The winners of the 2020 AHSA Scholarship.
- 17-22** **NATIONAL HAMPSHIRE SHOW RESULTS**
Results from the Louisville show in November.
- 24** **NEW DIRECTORS**
Information on Jesse Robbins and Doug McAllister.
- 26** **2021 MIDWEST SALE SCHEDULE**
Schedule of events happening June 14th - June 19th.
- 28-29** **ARTICLE BY MAGGIE AMBURGEY**
Mineral: The Key To Flock Breeding Success.
- 31** **ALL AMERICAN JUNIOR SHOW SCHEDULE**
Schedule of events happening June 30th - July 4th.
- 32-33** **YOUTH CONNECTION**
A story from Ed Hewlett on growing up.
- 34** **OBITUARIES**
Remembering Jay Clyde Brubaker & Joy Ann Hickman
- 36-37** **FEATURING THE JOHNSON SISTERS**
A double feature on Jacee and Sara Johnson.
- 39** **APPLICATION FOR SUMMER INTERNS**
Application to be a summer intern at AHSA.
- 42-46** **JUNIOR HAMPSHIRE SHOW RESULTS**
Results from the Louisville show in November.
- 46** **NEW SENIOR MEMBERS**
The newest members from October to January.
- 48-49** **STATE HAMPSHIRE ASSOCIATIONS**
Contact information for state associations.
- 52-56** **AHSA FUTURITY**
Information for the Futurity Program, 2021 Futurity rules, and point record form.
- 57** **AJHSA BOARD**
Photos of the American Junior Hampshire Sheep Association Board.
- 58** **INFORMATION ON SHEEP PRODUCERS**
The amount of money American Sheep Producers have received from CFAP.

Calendar of Events

APRIL

- 16-17: Illinois All Breeds Sale Bloomington, IL Banner Sale Management
- 18: Kjeldgaard and Willwerth Online Sale hosted by integritylivestocksales.com
- 19: Entry deadline for AHSA Online Sale
- 22: Heart of a Champion Online Sale hosted by wlivestock.com
- 25: Peterson Sheep Company Online Sale hosted by integritylivestocksales.com
- 26: Alf Hampshires Online Sale hosted by integritylivestocksales.com
- 27: AHSA Online Sale hosted by integritylivestocksales.com
- 27: Herrig Hampshires Online Sale hosted by wlivestock.com
- 28: Pullin Hampshires Online Sale hosted by integritylivestocksales.com

MAY

- 2: Spoonster Hampshires Online Sale hosted by integritylivestocksales.com
- 3: Hickman Hampshires Online Sale hosted by integritylivestocksales.com
- 6-8: Eastern Regional Hampshire Sale Greenville, OH Select Livestock Services
- 8-9: Hamps Across America Kickoff Shows Greenville, OH
- 15: Ad & Content Deadline for Spring Heartbeat
- 24: Entry Deadline AHSA Online Sales
- 29-30: Freedom Fest and District 5 Junior Hampshire Show

JUNE

- 1: AHSA Online Sale hosted by integritylivestocksales.com
- 14-19: National Hampshire Sales Sedalia, MO Heartland Livestock Services

JULY

- 1-4: All American Junior Show Springfield, IL
- 29-1: Pistol Pete Classic & Region 3 Junior Hampshire Show

Official Publication of the American Hampshire Sheep Association

420A Lincoln
P.O. Box 231

Wamego, Kansas 66547

Ph: 785-456-8500 Fax: 785-456-8599

asregistry@gmail.com • www.hampshires.org

EXECUTIVE SECRETARY: Jeff Ebert

STAFF: AMBER THOMPSON, JANETTE FUND, ANNIE SCHOETMER, & SHERRY HAMMAN

HEARTBEAT EDITOR: MORGAN HUELSMAN

AHSA Board of Directors

President: Katelyn Parsons

Vice President: Ted Van Horn

DISTRICT 1 - Dina King

(707) 322-3469 - dinamking@hotmail.com

1st term expires in 2021

DISTRICT 2 - Jesse Robins, UT

(949) 382-8992 - jessg.robins@gmail.com

1st term expires 2023

DISTRICT 3- Bart Cardwell, OK

(508) 628-6463 - bartcardwell@noc.edu

1st term expires 2022

DISTRICT 4 - Philip Thomas, SD

(605) 759-0574 - thomashamps605@gmail.com

1st term expires 2022

DISTRICT 5 - Ted Van Horn

(620) 285-9486 - vanhorn@gbta.net

1st term expires in 2021

DISTRICT 6 - Doug McAllister, OH

(937) 533-0783 - alphaomegafarms@gmail.com

1st term expires 2023

DISTRICT 7 - Scott Van Sickle

(270) 792-7173 - vansickleantiquityridgefarm@gmail.com

3rd term expires in 2021

DISTRICT 8 - Katelyn Parsons

(413) 387-2726 - katelyn@mfbf.net

2nd term expires 2022

AT-LARGE - Tom Bobendrier, MN

(507) 215-0334 - shebob@svtv.com

3rd term expires in 2021

AT-LARGE - Derick Miller, TX

(806) 239-3670 - millerpecanfarms@gmail.com

3rd term expires 2022

AT-LARGE- Jason Mumm, IL

(217) 377-2073 - meganmumm@hotmail.com

2nd term expires 2023

Office Fee Schedule

A. MEMBERSHIPS

- 1. New Senior Membership _____ \$25
- 2. Annual Senior Dues _____ \$25
- 3. New Junior Membership _____ \$15
- 4. Junior Dues _____ \$15

B. REGISTRATIONS

- Postmarked Sept 1 - April 30
- 1. Animals under 12 months _____ \$4
- 2. Animals over 12 months _____ \$8
- Postmarked May 1 - August 31
- 1. Animals under 12 months _____ \$6
- 2. Animals over 12 months _____ \$12

C. TRANSFERS

- 1. Under 90 Days (from date of sale) _____ \$10
- 2. Over 90 Days (from date of sale) _____ \$20

D. DUPLICATE CERTIFICATE _____ \$5

E. RUSH FEE (PER TRANSACTION) _____ \$5

IF YOU WOULD LIKE TO HAVE YOUR SHOW
OR SALE LISTED IN OUR CALENDAR OF
EVENTS AND ON THE HAMPSHIRE WEBSITE,
PLEASE EMAIL US THE INFORMATION. FOR
SALES TO BE LISTED YOU MUST BE SELLING
REGISTERED HAMPSHIRE.

Greetings from your President

Dear Hampshire Breeders,

As we look towards things hopefully returning to normal (or "new" normal) this show season, the American Hampshire Sheep Association (AHSA) has been working hard on our members' behalf. This year the board is rolling out its lifetime membership program and its point show series for juniors. We also are excited to see what our junior board is planning as events return! I wanted to start by mentioning that it was brought to my attention there was a previous lifetime membership program AHSA ran in the 60s. This program appears to have honored certain members with a certificate. The new lifetime membership program that AHSA board is introducing would allow members to pay a certain dollar amount to become a dues paying member for their lifetime.

After paying this one-time, larger fee, the member would not have to pay dues again. The larger dues payment is based on a sliding scale depending on number of years the member has been a member.

We also are working on rolling out our point show series, which will be in addition to our futurity program. From feedback we received, we will be fully funding both programs. The point show series will allow juniors to receive points on their registered Hampshires at an unlimited number of shows (as opposed to futurity, which is limited to top 5). The goal is to help promote the breed and encourage junior involvement. We hope to see some strong interest in this program in 2021.

I also want to mention that an item that has been a discussion among the AHSA board is Hampshire representation in the commercial industry. Hampshires are known for the bone and muscle they can add to a commercial flock and the board has discussed ways to highlight the registered Hampshire advantage to commercial breeders. As we explore new means to emphasize this, we hope to see our breed gain more ground in commercial flocks.

Finally, as a reminder, our online sales will be April 27 and June 1. We look forward to your entries and to the bids we hope to see on these entries!

Stay safe,

Katelyn Parsons
AHSA President

ADVERTISING IN THE HEARTBEAT

****Printed three times a year****

WINTER ♦ SPRING ♦ FALL

You can choose to run an individual ad in a single issue of your choice, or choose a three-issue contract. Contract ads will be placed in three consecutive issues of the Hampshire Heartbeat. Contracts begin with the next available issue and run through the next two consecutive issues. Either an individual ad or a contract can be purchased at any time throughout the year. Prices for both types are listed below or advertisers who provide ads ready for publication will receive a 15% discount on the listed prices. You may find more information at www.hampshires.org.

DEADLINES

Winter Issue: January 15th

Spring Issue: May 1st

Fall Issue: September 15th

Ad size or Placement	Single Issue Price	Three Issue Contract Price
Inside Covers	\$450.....	\$900
2-Page Spread.....	\$550.....	\$1100
Full Page	\$350.....	\$700
3/4 Page	\$300.....	\$600
2/3 Page	\$275.....	\$550
1/2 Page	\$250.....	\$500
1/3 Page	\$210.....	\$420
1/4 Page	\$165.....	\$330
1/6 Page	\$125.....	\$250
1/8 Page	\$100.....	\$200

Featuring Pullin Family



INTRODUCE YOURSELF & YOUR FAMILY

Ron and Mary Esther live on the home farm in Waterloo, Iowa, and perform the daily operations of the Hampshire flock. Both are third-generation sheep producers. Mary Esther's family raised purebred Hampshires and Suffolks in Indiana. Both have been heavily involved in the agriculture industry serving in many capacities with farm, fair, and livestock groups. Ron is a former Director of the American Hampshire Sheep Association, and many know Mary Esther as the sheep show announcer at the Iowa State Fair. Their children are Doug, Deb, and Dave.

Doug, his wife Tammy, and their sons Tyler and Travis live in central Iowa. They help at fairs and on the farm occasionally. Tyler and his wife, Staci, are raising the sixth generation of Pullins in the sheep industry, Sadie and Weston. Travis and his fiancée Kara will be married in August.

Deb (Pullin-Van Auken) and her husband Chris now live in Waterloo and help with daily operations on the farm, particularly with the sheep flock, and help with all the show activities.

Dave and his wife Tammie live in the Chicago area. Dave helps at the fairs and enjoys spending weekends on the farm helping with farm operations, especially if it involves a tractor.

GIVE US A BRIEF DESCRIPTION OF YOUR HAMPSHIRE FLOCK

Our flock currently consists of approximately 75 brood ewes, 22 yearling ewes, 5 yearling rams, and four stud rams. We have chosen to stay with the "frame"-type sheep because we have always based our flock on maintaining strong production characteristics with mothers bearing and raising their own lambs and market animals with excellent feed efficiency that go to slaughter with high weight per day of age. We produce breeding stock aimed at purebred frame breeders as well as rams for commercial operations.

WHY DID YOU CHOOSE TO INCLUDE REGISTERED HAMPSHIRE IN YOUR SHEEP OPERATION?

This year we are proudly celebrating 95 years of raising Hampshire sheep. Our involvement with the breed began in 1926 when R.E. Pullin & Sons purchased their first Hampshire ewes to add to their show flock of Oxfords and Cheviots, so the move was initially show ring oriented. The flock ownership changed when R.E.'s son Don, a well-known sheep judge and former President of the American Hampshire Sheep Association, took over with his sons and then again when it moved solely to Don's son Ron and his family in the 1970's. The composition of the flock also changed over time with disbursement of the Oxfords and Cheviots by the 1950's and the addition of white/speckle-faced commercial ewes in the 1970's to breed to our Hampshire rams. By early 1990, the flock had expanded to 325 ewes, almost evenly split between the purebred and commercial flocks. When Ron's children decided not to come back home to farm, he sold off the commercial flock to focus solely on the Hampshires. The family stayed long-term with Hampshires because they are good mothers that can bear and raise their own lambs, have excellent carcass quality, and have strong production characteristics.

WHAT ADVICE DO YOU HAVE FOR PEOPLE STARTING OUT IN THE SHEEP BUSINESS?

First, get your seed stock from someone you can trust, someone that is open and honest about the animals you are selecting.

Second, always stay with the production basics to avoid management issues and improve profitability: structural correctness, adequate bone, clean fronted animals that promote ease of lambing, adequate muscling, and growthiness that gets lambs to market at a higher weight sooner.

WHAT ARE ONE OR TWO ITEMS THAT YOU HAVE FOUND TO BE CRITICAL FOR THE SUCCESS OF YOUR SHEEP OPERATION?

We have found that it is essential to network with other sheep producers and never be afraid to ask questions. Issues pop up all the time that you and/or your veterinarian have never encountered, and you can find ideas and even answers by reaching out to your network. In addition, when it comes time to bring in seed stock, particularly rams, you want to know the breeders that have the type of stock you are seeking and be able to identify people you can trust and that are also considering your best interests. You can easily set back your breeding program for years if you do not select the correct ram or if you buy ewes that do not meet your needs.

WHO ARE SOME PEOPLE THAT YOU CREDIT FOR YOUR SUCCESS WITH HAMPSHIRE?

Over 95 years, there have been numerous influences on our success and in many different ways. In the past 20 years, however, ram influences from the Charles Kirlin Family, Bobendrier Family, and Held Hampshires have moved our flock to new levels. A ewe purchased from the Herrig Family at the 2011 National Hampshire Sale produced an exceptionally strong line of ewes. Also, we credit the Wayne and Shelly O'Brien Family for assisting us in recent years to help us prepare our sheep for shows and sales and ongoing support when issues arise – including when Wayne assisted Deb over the phone when she was delivering her first lamb in a difficult birth by herself. As previously noted, having a strong network is important; and having reliable friends can get you through many difficult situations.

WHAT IS YOUR FAVORITE SPORTS TEAM?

We are huge Iowa State Cyclone fans, as almost all of us attended or graduated from the university. In fact, Travis was an Iowa State cheerleader. You will frequently see us in Cyclone attire. And, yes, most of us bleed Cardinal Red and Gold! That being said, Mary Esther, born and raised in Indiana and having attended Purdue along with many members of her family, can frequently be heard to say “I’m a Hoosier by birth and a Boilermaker by the grace of God!”

WHAT IS YOUR FAVORITE FOOD?

It is difficult to select a favorite food. However, Dave is a big “foodie” and is always finding interesting restaurants and breweries in travels around the country and internationally. True to form, he was the first of our group of friends in the sheep barns at the Iowa and Wisconsin state fairs to discover the state wine and beer gardens and to find the phone apps that show you where to find all the fair food treats.

WHAT IS THE TOP ITEM ON YOUR BUCKET LIST?

For Ron and Mary Esther, that would be visiting sheep operations in Australia and New Zealand.

WHAT IS THE FAVORITE PLACE YOU HAVE VISITED?

Ron would say that the favorite place he has visited is the Indiana State Fair when he met Mary Esther. The rest of us would likely say that the places we traveled to fish together or traveling to watch Iowa State play at Jack Trice Stadium, Hilton Coliseum, in a bowl game, or in a Big XII or NCAA basketball tournament were all fun and exciting places to visit.





ALF

Hampshires

MARK YOUR CALENDAR FOR OUR 2ND ANNUAL ONLINE AUCTION

WITH INTEGRITY *April 26, 2021* LIVESTOCK SALES

high sellers from last year's sales:

\$800 // Spoonster Hamps, MO



\$1050 // Gary Klug, IA



\$2400 // David Lytle, PA



\$1200 // Brian Caraker, AR



\$750 // Spoonster Hamps, MO



\$950 // Joe Shields, IN

Thank You

TO ALL OF OUR 2020 CUSTOMERS FOR THEIR SUPPORT

ALF HAMPSHIRE · **JOHN + BRITTANY ALF** · **JOHN: (608) 449-0707**

LIKE ALF HAMPSHIRE ON FACEBOOK TO STAY UP TO DATE!

Remembering Dr. Thomas Lee Huber

Dr. Thomas Lee Huber, 85, died Thursday, February 4, 2021. Tom was preceded in death by his parents, Oren and Ruth Huber, two brothers, Richard (Bud) Huber, William Huber, and two sister, Olive Huber Campbell and Doris Huber Gardin. He is survived by his beloved wife of 58 years, Mona Turner Huber, and many nieces and nephews.

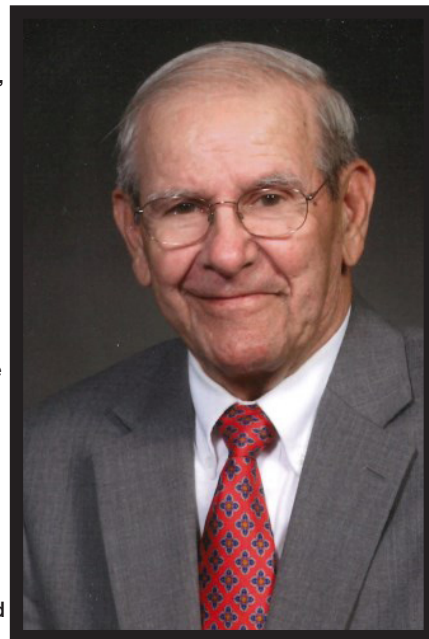
Tom was born in Brownstown, Indiana, where he earned a basketball scholarship to Purdue University. He earned his Masters degree from Kansas State University and later received his Doctorate from the University of Kentucky in animal nutrition and a minor in biochemistry. Tom received a post Doctorate degree from the University of Illinois Urbana-Champaign in Animal Science, where he later taught in their veterinary school for two years.

In his early career, Tom taught school in Freetown, Indiana. While in school in Kentucky, he met his wife Mona and they were married in 1962. After their marriage, Tom accepted a position in the University of Georgia Veterinary School where he taught for 31 years, and was a graduate coordinator in the Vet School for several years. While at UGA he received the Vet. Schools highest honor, Norden Distinguished Teaching award and received the Block and Bridle Producer of the Year award. A scholarship was created in his name, the Thomas L. Huber Nestle Purina Scholarship. He was a member of AGHON, and Phi Zeta. Tom had many wonderful graduate students which went on to great careers.

Tom had a sheep farm which he adored, where he raised Hampshire sheep that he and his wife showed for over 30 years throughout the Midwest and Southeast. Tom served as executive secretary of the Georgia Sheep and Wool Growers for many years. He was a board member of the American Hampshire Sheep Association for 18 years, and served as their president for two years, during their Centennial. Tom was a member of Tuckston United Methodist Church for almost 50 years and served as an usher for much of that time.

The family will receive friends from 1:00-3:00PM on Monday, February 8, 2021 at Lord and Stephens Funeral Home, East Chapel, followed by a graveside service at 3:30PM at Tuckston United Methodist Church Cemetery with Rev. Dr. John Brown officiating. Pallbearers will be Ben Ruzowicz, Stephen Amos, Henry Hibbs, Jimmy Simmons, Ashley Turner and Billy Campbell, and honorary pallbearers will be Tom Yeargin, Bill Foley, Parshal Bush, and Henry Stone.

In lieu of flowers, donations may be made to the Tuckston United Methodist Church Memorial Fund, at 4175 Lexington Road, Athens, GA 30605 or to the Thomas L. Huber Nestle Purina Scholarship Fund, at 501 DW Brooks Drive, Athens, GA 30602, with checks payable to the UGA Foundation.



SOUTH DAKOTA STATE UNIVERSITY

"Performance driven Hampshires with style!"

Select offspring from Wheaton 6-189, U of WI 16-114 and our newest sire SDSU 9054 will be offered in our 11th Annual SDSU Hampshire Sale May 5th, 2021!

VISITORS WELCOME ANYTIME!



Thank You to our 2020 buyers!
We look forward to what 2021 has in store.

Looking forward to another great lamb crop for 2021.

FOR MORE INFORMATION:
Karolynn Marsan - UNIT MANAGER - CELL 208-661-4587

NSIP EBV'S AVAILABLE FOR ALL LAMBS.
BE SURE TO FOLLOW US ON FACEBOOK FOR
FLOCK UPDATES AND PHOTOS



PLEASED TO ANNOUNCE

Peterson Sheep Co.

Shared Genetics Online Sale

APRIL 25TH, 2021 ON INTEGRITY LIVESTOCK SALES

Offering Stud Prospects and Foundation Females

P
PETERSON SHEEP CO.

803-23rd Street N.E. | Lemmon, SD 57638 | 701.376.3115 | peterson@sdplains.com

HAMPSHIRE ACROSS AMERICA



Kickoff Shows

TWO SHOWS ★ ONE WEEKEND ★ ONE LOCATION

MAY 8-9, 2021

**Darke County Fairgrounds
Greenville, OH**

*These are the kickoff shows to the
Hampshires Across America Point Series.*

★ **WATCH THE HAMPSHIRE WEBSITE AND YOUR EMAIL
FOR MORE DETAILS.**

★ **THIS POINT SERIES IS A CHANCE FOR JUNIORS TO
ACCUMULATE POINTS THROUGHOUT THE YEAR.**

★ **SEPARATE DIVISIONS FOR:**

- ★ Fitted Ewes ★ Slick Ewes
- ★ Fitted Rams ★ Slick Rams
- ★ Wethers

For more information contact the AHSA office at
(785) 456-8500 or asregistry@gmail.com

Highland Hampshires



*Looking Back
While Pushing
Forward*

Gary T. Klug
939 Hazel Rd.
Harlan, IA 51537
(712)202-4461
klughihamp@tm.net

Dylan R Klug
1033 1st Ave.
Grafton, WI
dklug2001@gmail.com

Lynn K. Lee—Flock Emissary
Ryan Bingen—Aesthetics Engineer

Hamp Registration By Member 2020

Johnson Family Show Stock, WA	132	Ram'n Acres, MN	31
Joe L Cabaniss, OK	96	Dustin Miller, TX	31
Thomas Hamps, SD	90	Niemeier Hampshires, IL	30
Jim Miller, TX	87	University of Wisconsin, WI	30
Roselawn Legacy, ND	68	Nelson Hampshires, CO	30
Jerry Flanders, DVM IN	58	Held's Hampshires, SD	30
Pine Lawn Farm, MN	57	Beau Mumm, IL	29
Leland H Wheaton, MI	56	Ty Thorson, WI	29
Campbell, Corbin & Clark Coyle, KY	53	Karberville Farms & Ranch, OK	29
Impact Hamps, WI	52	Michel or Betty Brink, SD	28
Stanley E Poe & Sons, IN	51	Vosika Farm, SD	28
Travis, Tyler & Alicia Nelssen, KS	43	Clearview Farm, IL	28
Haws Club Lambs, TX	42	Jewel Lane Farm, MN	27
Deckert Hampshires, ND	42	Pullin's Hamps, IA	27
Tom Slack, IN	41	Chapman Hampshires, SD	27
Charmasson Club Lambs, OK	39	Chapin Hamps, IL	27
South Dakota State University, SD	39	Suzanna Storms, IL	27
Bobendrier Hampshires, MN	38	7 Mile Hampshires, MT	27
Houghtaling Hamps, SD	37	Richard Krackow, WI	26
Wise Hamps, OH	37	Ott Club Lambs, OK	26
Derick Miller, TX	36	Fleener Club Lambs, PA	26
Silvers Livestock, TX	34	Bobendrier Boys, MN	26
Alf Hampshires, WI	34	David Van Cleave, IL	26
Lazy 5 Ranch, NC	33	Uptown Hamps, MO	25
NOC Sheep Center, OK	32	Double F Club Lambs, KY	25
Tim & Sarah Fleener, PA	31	L & L Hampshires, NE	25

Hamp Registration By State 2020

Oklahoma – 596
 Indiana – 588
 South Dakota – 503
 Wisconsin – 501
 Texas – 472
 Illinois – 423
 Minnesota – 371
 North Dakota – 249
 Pennsylvania – 236
 Kansas – 220
 Ohio – 209
 Iowa – 194
 Missouri – 188
 Kentucky – 155
 California – 149
 Nebraska – 113
 Oregon – 96
 Colorado – 86
 Montana – 79
 Utah – 76
 Michigan – 67
 Tennessee – 52

North Carolina – 50
 Maryland – 49
 Virginia – 38
 Wyoming – 31
 Washington – 26
 Idaho – 25
 West Virginia – 21
 New York – 20
 Florida – 19
 Massachusetts – 16
 New Jersey – 14
 Georgia – 13
 Maine – 13
 Arkansas – 9
 Delaware – 9
 Connecticut – 7
 Arizona – 6
 Alabama – 5
 New Hampshire – 4
 Louisiana – 2
 New Mexico – 1

THROUGH IT ALL, WE'VE HAD A GOOD YEAR



Niemeier 9 "**Diamond**" Reserve Junior Champion ewe at NAILE (1st Feb). Also captured 1st pair of ewe lambs with her twin Silk (3rd Feb).



Niemeier 21 "**Tradition**" won Reserve National Champion Ram at NAILE (1st March). He goes back to one of our best ewe families. You will be hearing more about this exciting ram.

Thank you Joyce Burnham and Steve George for doing such a great job with our sheep at Louisville.



Niemeier 922 "**Gambler**" Thanks to the Spoonster family of MO for purchasing this top ram with a nice group of foundation ewes.



Niemeier 920 Thanks to Rabbit Creek Farms of Nevada for picking this big boned ram for their flock.



Niemeier 942 Thanks to Alf Hampshires of Wisconsin selected this stylish stud ram.



Niemeier 2 Thanks to Mumm Hampshires of IL who selected this top Fall Ram for their flock

Thanks and good luck to Brock Canthion of WY on choosing us to start his flock with a stud ram and 7 ewes. Congratulations to Held Hampshires with their success in the show ring and sales with Niemeier 818's offspring. It is an honor to have a stud ram in such a prestigious flock.

Contact us for Top Quality Genetics in 2021!



Ed is celebrating his 70th year in Hampshires in 2021

NIEMEIER HAMPSHIRE

4704 Blackburn Rd, Edwardsville, IL | 618-779-7683 | NiemeierFarms@gmail.com

2020 AHSA SCHOLARSHIP WINNERS



Loyal Burns – Crabtree, OR
-Sophomore at Linn-Benton Community College
-Program - Associate of Science



Shelby Currie - Conroe, TX
-Junior at Lubbock Christian University
-Program - Bachelor of Animal Science with
Pre-Vet Option



Ellie Hanson – Woodburn, OR
-Freshman at Eastern Oregon University
-Program - Business Administration



Morgan Hauger – Connersville, IN
-Freshman at Purdue University
-Program - Agriculture Communications



Amanda King – Petaluma, CA
-Sophomore at California State University, Chico
-Program - Agricultural Business



Skye Schumaker – Heyworth, IL
-Sophomore at Lake Land Community College
-Program - Agricultural Business

2021 AHSA SCHOLARSHIP DUE SEPTEMBER 1ST
APPLICATIONS CAN BE FOUND ON THE AHSA WEBSITE

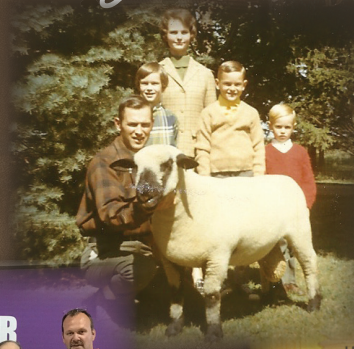
95 YEARS

a rich history in the Hampshire business



2020

Pullin Hampshires exhibited two yearling ewes at the 2020 NAILE, pictured left and bottom right



1969

The Pullin family Christmas card included a Hampshire sheep

2017

Pullin Hampshires is inducted into the Sheep Barn Hall of Fame at the Wisconsin State Fair.



Don Pullin (top left) and his father and brother started the flock as R.E. Pullin & Sons in 1926. At one time, Don Pullin was President of the American Hampshire Sheep Association and judged numerous shows. Ron Pullin (top right) is pictured at the 1968 National Corn Belt Sale.

APRIL 28

Watch for our online sale on Integrity Livestock Sales this spring!



STAY TUNED

Visit our Facebook page, Pullin's Hampshires for the latest updates!



North American International Livestock Exposition National Hampshire Show Results

Louisville, KY - November 20, 2020

Open Show Judges: Fitted- Noel Olson, OK Slick-Shorn- Tim Fleener, PA

-FITTED DIVISION-

YEARLING RAMS

1- Bobendrier Boys, MN			
Bobendrier Boys 19-60	3/9/19	606525	
<i>S: Bobendrier 16-174 NNP RR 'Rare Legend' 602380</i>			
<i>D: Bobendrier Boys 17-11 QR 68117D</i>			
2- L & L Hampshires, NE			
Larson L & L 19-901 ET	1/13/19	606689	
<i>S: Larson L & L 17-752 ET 605175</i>			
<i>D: Larson L & L 14-84 QR NN 49407D</i>			
3- Chapin Hamps - Bill Chapin, IL			
Chapin 206 RR NNP	1/20/19	605608	
<i>S: Chapin 152 RR NNP 600975</i>			
<i>D: Chapin 633 NNP QR 57429D</i>			

SENIOR RAM LAMBS

1- Bobendrier Hampshires, MN			
Bobendrier 19-104 NNP RR 'Rare Nugget'	9/24/19	606977	
<i>S: Bobendrier 18-05 NNP RR 'Rare Reputation' 604001</i>			
<i>D: Bobendrier 13-166 NNP RR 48174D</i>			
2- Pine Lawn Farms - Caskey Family, MN			
Rikow 9060	9/9/19	607238	
<i>S: Rikow 7027 'Rapid Fire' 602767</i>			
<i>D: Peterson 5760 RR 40394D</i>			
3- McTaggart Hampshire, IN			
McTaggarts 1930 RRNNP	9/8/19	607159	
<i>S: Bobendrier 17-38 NNP RR 602387</i>			
<i>D: Bobendrier 13-166 NNP RR 48174D</i>			

SENIOR CHAMPION RAM

Bobendrier Hampshires, MN			
Bobendrier 19-104 NNP RR 'Rare Nugget'	9/24/19	606977	
<i>S: Bobendrier 18-05 NNP RR 'Rare Reputation' 604001</i>			
<i>D: Bobendrier 13-166 NNP RR 48174D</i>			

RESERVE SENIOR CHAMPION RAM

Pine Lawn Farms - Caskey Family, MN			
Rikow 9060	9/9/19	607238	
<i>S: Rikow 7027 'Rapid Fire' 602767</i>			
<i>D: Peterson 5760 RR 40394D</i>			

JANUARY RAM LAMBS

1- Jon Mark, WI			
Mork Greenway 20-94 W AI	1/15/20	607535	
<i>S: Hickman 1405 ET RR 604185</i>			
<i>D: Merrill 7099 70962D</i>			
2- Bobendrier Hampshires, MN			
Bobendrier 20-28 NNP RR	1/20/20	607774	
<i>S: Bobendrier 16-174 NNP RR 'Rare Legend' 604362</i>			
<i>D: Bobendrier 18-36 NNP RR 74075D</i>			
3- L & L Hampshires, NE			
Chapman 649	1/30/20	607721	
<i>S: Larson L & L 18-821 605177</i>			
<i>D: Bobendrier 13-94 NNP RR 47028D</i>			
4- Danielle Houghtaling, SD			
Houghtaling 20-961 RRNNP	1/2/20	606955	
<i>S: Houghtaling 16-663 QR 601459</i>			
<i>D: Houghtaling 17-760 RR NNP 68831D</i>			
5- Bobendrier Boys, MN			
Bobendrier Boys 20-10 RR	1/20/20	607640	
<i>S: Bobendrier 16-174 NNP RR 'Rare Legend' 602380</i>			
<i>D: Bobendrier Boys 16-56 64932D</i>			

6- Chapin Hamps - Bill Chapin, IL			
Chapin 213 RR NNP	1/17/20	606932	
<i>S: Bobendrier 16-161 NNP RR 602637</i>			
<i>D: Chapin 626 RR NNP 62142D</i>			

FEBRUARY RAM LAMBS

1- Jenna Sullivan, CT			
Sullivan 2006	2/13/20	607616	
<i>S: Larson L & L 17-752 ET 605175</i>			
<i>D: Bobendrier 14-10 NNP RR 48713D</i>			
2- Pine Lawn Farms - Caskey Family, MN			
Caskey A044 RR	2/3/20	607607	
<i>S: Caskey 8569 RR 605103</i>			
<i>D: Caskey 8418 RR 78211D</i>			
3- Beau Mumm, IL			
Mumm 2003 QR	2/3/20	607166	
<i>S: Kjeldgaard 18-975 RR 604692</i>			
<i>D: Mumm 1680 61661D</i>			
4- Edward Niemeier, IL			
Niemeier 8	2/14/20	607822	
<i>S: Niemeier 901 605996</i>			
<i>D: Nelson 18-29 RR 77141D</i>			
5- Bobendrier Hampshires, MN			
Bobendrier 20-42 NNP RR	2/4/20	607775	
<i>S: Bobendrier 18-19 NNP RR 'Rare JD' 604150</i>			
<i>D: Bobendrier 16-175 NNP RR 67465D</i>			
6- Chapin Hamps - Bill Chapin, IL			
Chapin 224 RR NNP	2/3/20	606939	
<i>S: Chapin 152 RR NNP 600975</i>			
<i>D: Bobendrier 13-08 NNP RR 42596D</i>			
7- Edward Niemeier, IL			
Niemeier 15	2/25/20	607823	
<i>S: Niemeier 901 605996</i>			
<i>D: Niemeier 724 72306D</i>			

MARCH RAM LAMBS

1- Edward Niemeier, IL			
Niemeier 21	3/7/20	607824	
<i>S: Niemeier 901 605996</i>			
<i>D: Niemeier 828 80979D</i>			
2- L & L Hampshires, NE			
Larson L & L 20-023	3/4/20	607324	
<i>S: Sullivan 1708 603246</i>			
<i>D: Larson L & L 14-96 RR NN 49410D</i>			
3- Pine Lawn Farms - Caskey Family, MN			
Caskey A240 RR	3/17/20	607611	
<i>S: Caskey 8569 RR 605103</i>			
<i>D: Caskey 6646 RR 66172D</i>			
4- Holly, Tye & Erin Kjeldgaard, NE			
Kjeldgaard 20-43 RR	3/5/20	607264	
<i>S: Kjeldgaard 18-953 RR ET 'Absolut' 604283</i>			
<i>D: Kjeldgaard 16-865 RR 'Maid of Honor' 65497D</i>			
5- Edward Niemeier, IL			
Niemeier 23	3/14/20	607825	
<i>S: Niemeier 901 605996</i>			
<i>D: Niemeier 729 72293D</i>			
6- Holly, Tye & Erin Kjeldgaard, NE			
Kjeldgaard 20-42 RR	3/5/20	607263	
<i>S: Kjeldgaard 18-953 RR ET 'Absolut' 604283</i>			
<i>D: Kjeldgaard 16-865 RR 'Maid of Honor' 65497D</i>			

PAIR OF RAM LAMBS

1- Bobendrier Hampshires, MN	
2- Pine Lawn Farms - Caskey Family, MN	
3- Edward Niemeier, IL	

JUNIOR CHAMPION RAM

Jenna Sullivan, CT		
Sullivan 2006	2/13/20	607616
<i>S: Larson L & L 17-752 ET 605175</i>		
<i>D: Bobendrier 14-10 NNP RR 48713D</i>		

RESERVE JUNIOR CHAMPION RAM

1- Edward Niemeier, IL		
Niemeier 21	3/7/20	607824
<i>S: Niemeier 901 605996</i>		
<i>D: Niemeier 828 80979D</i>		



CHAMPION FITTED RAM

Jenna Sullivan, CT		
Sullivan 2006	2/13/20	607616
<i>S: Larson L & L 17-752 ET 605175</i>		
<i>D: Bobendrier 14-10 NNP RR 48713D</i>		



RES. CHAMPION FITTED RAM

Edward Niemeier, IL		
Niemeier 21	3/7/20	607824
<i>S: Niemeier 901 605996</i>		
<i>D: Niemeier 828 80979D</i>		

YEARLING EWES - CLASS A

1- Jenna Sullivan, CT			
Sullivan 1917	2/4/19	79222D	
S: Sullivan 1802		603802	
D: Sullivan 1508		55656D	
2- Holly, Tye & Erin Kjeldgaard, NE			
Kjeldgaard 19-3 RR ET	2/8/19	79308D	
S: Willwerth Gray 26 RR		604310	
D: Kjeldgaard 16-858 RR 'Adel'		64054D	
3- Pullin's Hamps - Ronald Pullin, IA			
Pullin 5-19	2/2/19	82322D	
S: Held 15-1656 NNP-RR		599087	
D: Herrig 0737 NN		27397D	
4- Pullin's Hamps - Ronald Pullin, IA			
Pullin 4-19	2/1/19	82321D	
S: Held 17-1912 RR-NNP		602283	
D: Pullin 1616		61939D	
5- Mike Barnes, OH			
Barnes 9-01 'Nessy'	1/28/19	81737D	
S: Willwerth Gray 29 QR		604357	
D: Caskey 2714 RR		40393D	
6- Blainey Woods, KS			
Sanford M908 RR	1/12/19	80029D	
S: Peterson 9374 RR		604620	
D: Sanford M 403 RR		48306D	
7- Bobendrier Boys, MN			
Bobendrier Boys 19-22 RR	1/10/19	81026D	
S: Bobendrier 16-174NNPRR 'RareLegend'		602380	
D: Klug HH 15-176 T NNP		54094D	
8- Chapin Hamps - Bill Chapin, IL			
K Person 19-05	1/22/19	79657D	
S: Quam 11411 RRNN ET		605043	
D: K Person 12-01		69389D	

YEARLING EWES - CLASS B

1- Averi Smith, IA			
Benjamin 1929	3/13/19	87455D	
S: Double "O" Acres 18-036 AI		607544	
D: Benjamin 1464		51207D	
2- Holly, Tye & Erin Kjeldgaard, NE			
Kjeldgaard 19-14 QR	3/11/19	82033D	
S: Willwerth Gray 26 RR		604310	
D: Kjeldgaard 13-783 QR		42731D	
3- John & Judy Moore, MI			
Moore 1041	2/7/19	79475D	
S: Herrig 1211		605135	
D: Moore 995		42570D	
4- Bobendrier Boys, MN			
Bobendrier Boys 19-58 RR	3/1/19	83599D	
S: Bobendrier 17-47 NNPRR		603464	
D: Bobendrier Boys 15-55 RR		58383D	
5- Holly, Tye & Erin Kjeldgaard, NE			
Kjeldgaard 19-2 RR ET	2/9/19	79306D	
S: Willwerth Gray 26 RR		604310	
D: Kjeldgaard 13-786 RR		42733D	
6- Blainey Woods, KS			
Willwerth White 88	2/25/19	84624D	
S: Peterson 9242 RR		603017	
D: Willwerth BL 14 RR AI		37014D	

PAIR OF YEARLING EWES

1- Holly, Tye & Erin Kjeldgaard, NE	
2- Bobendrier Boys, MN	
3- Pullin's Hamps - Ronald Pullin, IA	

SENIOR EWE LAMBS

1- Bobendrier Hampshires, MN	
Bobendrier 19-103 NNP RR	9/23/19 85335D
S: Bobendrier 16-174NNPRR 'RareLegend'	602380
D: Bobendrier 16-42 NNP RR	61623D

2- Chapin Hamps - Bill Chapin, IL	
Chapin 689 QR NNP	9/24/19 84882D
S: Basting 1803	604479
D: Chapin 593 QR	49776D

SENIOR CHAMPION EWE

Jenna Sullivan, CT	
Sullivan 1917	2/4/19 79222D
S: Sullivan 1802	603802
D: Sullivan 1508	55656D

RESERVE SENIOR CHAMPION EWE

Averi Smith, IA	
Benjamin 1929	3/13/19 87455D
S: Double "O" Acres 18-036 AI	607544
D: Benjamin 1464	51207D

JANUARY EWE LAMBS

1- Barret Marshall, SD	
BMW M 002	1/6/20 85386D
S: BW WM 8-95	606254
D: BM WM 638	63251D
2- Bobendrier Hampshires, MN	
Bobendrier 20-22 NNP RR	1/19/20 603464D
S: Bobendrier 17-47 NNP RR	603464
D: Bobendrier 15-160 NNP RR	61597D
3- Fuller Sheep Farm - Ty Fuller & Baline Hyde, SD	
PHF 2035 AI	1/10/20 87436D
S: Hickman 1405 ET RR	604185
D: Mork Greenway W-7	36261D
4- Bobendrier Hampshires, MN	
Bobendrier 20-06 NNP RR	1/1/20 85338D
S: Bobendrier 16-174NNPRR 'RareLegend'	604357
D: Bobendrier 16-13 NNP RR	61609D
5- Beau Mumm, IL	
Schiefelbein 2003 RR	1/3/20 85008D
S: Held 17-1943 NNP-RR	603913
D: Schiefelbein 1711 RR	69823D
6- Kenzie Meyer, IL	
Caskey A012 RR	1/20/20 86350D
S: Caskey 8459 RR	605100
D: Caskey 7634 RR	72236D
7- Chapin Hamps - Bill Chapin, IL	
Chapin 697 RR NNP	1/24/20 84889D
S: Bobendrier 16-161 NNP RR	602637
D: Chapin 654 RR NN	73152D
8- Bobendrier Boys, MN	
Bobendrier Boys 20-04 RR	1/7/20 85713D
S: Bobendrier 16-174NNPRR 'RareLegend'	602380
D: Bobendrier Boys 18-42 QR	75884D
9- Blainey Woods, KS	
Caskey A008 RR	1/19/20 86352D
S: Caskey 8459 RR	605100
D: Caskey 7611 RR	70913D
10- Danielle Houghtaling, SD	
Houghtaling 20-970 RRNNP	1/17/20 84853D
S: Houghtaling 18-795 RRNNP	604480
D: Houghtaling 16-684 RR	65234D
11- Danielle Houghtaling, SD	
Houghtaling 20-971 RRNNP	1/17/20 84854D
S: Pullin 1619	600907
D: Houghtaling 15-601 QR	54677D

FEBRUARY EWE LAMBS

1- Edward Niemeier, IL	
Niemeier 9	2/14/20 88390D
S: Niemeier 901	605996
D: Nelson 18-08 RR	77135D

2- Pine Lawn Farms - Caskey Family, MN	
Caskey A047 RR	2/3/20 87375D
S: Caskey 8563 RR	605102
D: Caskey 7630 RR	68530D
3- Edward Niemeier, IL	
Niemeier 10	2/14/20 88391D
S: Niemeier 901	605996
D: Nelson 18-08 RR	77135D
4- Holly, Tye & Erin Kjeldgaard, NE	
Kjeldgaard 20-39 RR ET	2/8/20 86038D
S: Kjeldgaard 18-953 RR ET 'Absolut'	604283
D: Kjeldgaard 18-969 RR	74347D
5- Bobendrier Boys, MN	
Bobendrier Boys 20-31 RR	2/9/20 85725D
S: Bobendrier 18-19 NNP RR 'Rare JD'	604150
D: Bobendrier Boys 16-100 RR	68792D
6- Danielle Houghtaling, SD	
Houghtaling 20-993 RRNNP	2/2/20 84932D
S: BM WM 506	600183
D: Houghtaling 18-794 RRNNP	75011D
7- Kenzie Meyer, IL	
Meyer 2032	2/20/20 86792D
S: Meyer 1414	598465
D: Meyer 1228	39397D

MARCH EWE LAMBS

1- Holly, Tye & Erin Kjeldgaard, NE	
Kjeldgaard 20-44 RR	3/5/20 86039D
S: Kjeldgaard 18-953 RR ET 'Absolut'	604283
D: Kjeldgaard 16-858 RR 'Adel'	64054D
2- Beau Mumm, IL	
Mumm 2050 RR	3/2/20 85570D
S: Kjeldgaard 18-975 RR	604692
D: Held 16-1761 NNP-RR	61479D
3- Pine Lawn Farms - Caskey Family, MN	
Caskey A131 RR	3/1/20 87378D
S: Caskey 7568 RR	603528
D: Caskey 8712 RR	78236D

PAIR OF EWE LAMBS

1- Edward Niemeier, IL	
2- Bobendrier Hampshires, MN	
3- Bobendrier Boys, MN	
4- Pine Lawn Farms - Caskey Family, MN	
5- Holly, Tye & Erin Kjeldgaard, NE	
6- Kenzie Meyer, IL	
7- Chapin Hamps - Bill Chapin, IL	

JUNIOR CHAMPION EWE

Holly, Tye & Erin Kjeldgaard, NE	
Kjeldgaard 20-44 RR	3/5/20 86039D
S: Kjeldgaard 18-953 RR ET 'Absolut'	604283
D: Kjeldgaard 16-858 RR 'Adel'	64054D

RESERVE JUNIOR CHAMPION EWE

Edward Niemeier, IL	
Niemeier 9	2/14/20 88390D
S: Niemeier 901	605996
D: Nelson 18-08 RR	77135D



CHAMPION FITTED EWES

Jenna Sullivan, CT

Sullivan 1917 2/4/19 79222D
 S: Sullivan 1802 603802
 D: Sullivan 1508 55656D



RES. CHAMPION FITTED EWES

Averi Smith, IA

Benjamin 1929 3/13/19 87455D
 S: Double "O" Acres 18-036 AI 607544
 D: Benjamin 1464 51207D

PREMIER FITTED EXHIBITOR

Bobendrier Hampshires, MN

-SLICK-SHORN DIVISION-

YEARLING RAMS

1- Morgan & Madison Hauger, IN

Hauger 19051 2/6/19 606211
 S: Hauger 0245 601627
 D: Poe 5063-15 AI 56204D

2- Alivia, Ainsley & Braylon Porter, IL

Storms 812 2/17/19 605750
 S: Storms 711 AI 604102
 D: Storms 590 AI 61461D

3- Joshua Wilson, NC

Lazy 5 3282 4/18/19 606735
 S: Lazy 5 3112 604754
 D: Lazy 5 2978 69664D

4- Joshua Wilson, NC

Lazy 5 3280 4/18/19 606734
 S: Lazy 5 3112 604754
 D: Lazy 5 3104 71240D

FALL RAM LAMBS

1- Joshua Wilson, NC

Lazy 5 3287 AI 9/8/19 607584
 S: Williams 5656 599700
 D: Lazy 5 3149 ET 75781D

2- Joshua Wilson, NC

Lazy 5 3285 9/15/19 607583
 S: Lazy 5 3112 604754
 D: Lazy 5 3213 ET 82258D

SENIOR CHAMPION RAM

Morgan & Madison Hauger, IN

Hauger 19051 2/6/19 606211
 S: Hauger 0245 601627
 D: Poe 5063-15 AI 56204D

RESERVE SENIOR CHAMPION RAM

Joshua Wilson, NC

Lazy 5 3287 AI 9/8/19 607584
 S: Williams 5656 599700
 D: Lazy 5 3149 ET 75781D

JANUARY RAM LAMBS

1- Linsey Eddy, OH

Westlake 2035 1/10/20 607282
 S: Westlake 0900 'Change Up' 606241
 D: Westlake 0800 75161D

2- Campbell, Corbin & Clark Coyle, KY

Terradise 2072 AI 1/11/20 607249
 S: Impact 13110 596520
 D: Terradise 8001 74612D

3- Alexis Hickman, IN

Flanders VIP 0281 RRNNFF BL 1/1/20 607061
 S: Dee Brothers LCC 3212 596228
 D: Flanders VIP 7520 75054D

4- Sidney Mcallister, OH

Rowe 2017 1/16/20 607491
 S: Williams 5656 599700
 D: Allred/Elliott 2059 ET 44431D

5- Joshua Wilson, NC

Lazy 5 3363 ET 1/17/20 607827
 S: Williams 5656 599700
 D: Lazy 5 2920 59097D

6- Steven Moran, TX

NSLS 00044 1/20/20 607748
 S: NSLS 19202 ET 606758
 D: Dee Brothers 3108 ET 45225D

7- Joshua Wilson, NC

Lazy 5 3369 1/2/20 607589
 S: Williams 5656 599700
 D: Lazy 5 2948 ET 66893D

FEBRUARY RAM LAMBS

1- Alivia, Ainsley & Braylon Porter, IL

Storms 1090 2/15/20 607096
 S: Storms 743 'Truck Yeah' 604530
 D: Storms 672 67894D

2- Joshua Wilson, NC

Lazy 5 3362 ET 2/10/20 607587
 S: Williams 5656 599700
 D: Lazy 5 2757 52467D

3- Van Cleave Hamps, IL

Van Cleave G-1970 RRNNFF AI 2/1/19 606677
 S: R Estes 6075 603394
 D: Van Cleave O-1624 65174D

MARCH RAM LAMBS

1- Sara, Jacee & Justin Johnson, WI

Johnson 1988 3/18/20 607484
 S: J Johnson 15-R1 603639
 D: J Johnson 1515 71264D

2- Alexis Hickman, IN

Lazy 5 3359 ET 3/10/20 607585
 S: Williams 5656 599700
 D: Lazy 5 2757 52467D

3- Morgan & Madison Hauger, IN

Hauger 20107 AI 3/4/20 607471
 S: Wheaton 8-822 QRNNFF ET 'The Big Chill' 604754
 D: Hauger 0402 75099D

4- Joshua Wilson, NC

Lazy 5 3400 ET 3/10/20 607590
 S: Williams 5656 599700
 D: Lazy 5 2920 59097D

PAIR OF RAM LAMBS

1- Alexis Hickman, IN

2- Joshua Wilson, NC

JUNIOR CHAMPION RAM

Sara, Jacee & Justin Johnson, WI

Johnson 1988 3/18/20 607484
 S: J Johnson 15-R1 603639
 D: J Johnson 1515 71264D

RESERVE JUNIOR CHAMPION RAM

Linsey Eddy, OH

Westlake 2035 1/10/20 607282
 S: Westlake 0900 'Change Up' 606241
 D: Westlake 0800 75161D



CHAMPION SLICK-SHORN RAM

Sara, Jacee & Justin Johnson, WI

Johnson 1988 3/18/20 607484
 S: J Johnson 15-R1 603639
 D: J Johnson 1515 71264D



RES. CHAMPION SLICK-SHORN RAM

Linsey Eddy, OH

Westlake 2035 1/10/20 607282
 S: Westlake 0900 'Change Up' 606241
 D: Westlake 0800 75161D

YEARLING EWES - CLASS A

1- Clark Coyle, KY

Poe 19028 AI 12/5/18 80495D
 S: Impact 13067 ET 597191
 D: Poe 5306-15 AI 78537D

2- Sidney Mcallister, OH Hull 9004 AI	1/20/19	81953D
<i>S: Impact 16028 ET</i>		
<i>D: Hull 6057</i>		
3- Ty Thorson, WI Rupnow 1904 AI	1/1/19	79912D
<i>S: Miller O-836 ET</i>		
<i>D: Rupnow 1105</i>		
4- Alexis Hickman, IN Flanders VIP 9152	1/20/19	79428D
<i>S: Flanders VIP 8795 RRNN UP</i>		
<i>D: Flanders VIP 5061 AI</i>		
5- Skilar Burch, TN Friesen 1917	2/3/19	80267D
<i>S: Slack H 5228</i>		
<i>D: Friesen 1646</i>		
6- Alexis Hickman, IN Flanders VIP 9140	1/2/19	79420D
<i>S: Alexander 1744 ET</i>		
<i>D: Flanders VIP 6289 AI</i>		
7- Ty Thorson, WI Metro 1921 AI	1/1/19	79920D
<i>S: Miller O-836 ET</i>		
<i>D: Metro 1527</i>		
8- Joshua Wilson, NC Lazy 5 3228 ET	1/1/19	81449D
<i>S: Lazy 5 2950 ET</i>		
<i>D: Lazy 5 2920</i>		
9- Tasha Schlueter, TX Lanier 9082	1/3/19	86259D
<i>S: Lanier W7077</i>		
<i>D: Lanier B7075</i>		
10- Steven Moran, TX NSLS 19058	1/22/19	88151D
<i>S: NSLS 15299 ET</i>		
<i>D: NSLS 13291</i>		

YEARLING EWES - CLASS B

1- Sara, Jacee & Justin Johnson, WI Johnson 2016	2/20/19	80950D
<i>S: J Johnson 15-R1</i>		
<i>D: J Johnson 1617</i>		
2- Alexis Hickman, IN Flanders VIP 9058	2/20/19	79461D
<i>S: Flanders VIP 8795 RRNN UP</i>		
<i>D: Flanders VIP 5021 AI</i>		
3- Campbell, Corbin & Clark Coyle, KY Terradise 9093	2/18/19	84650D
<i>S: Poe A7151-17 AI</i>		
<i>D: Terradise 8018</i>		
4- Sallie & Samantha Everhart, IN Hauger 19111	3/4/19	81729D
<i>S: Hauger 0245</i>		
<i>D: Hauger 0288</i>		
5- Joshua Wilson, NC Lazy 5 3241 ET	3/1/19	81456D
<i>S: Lazy 5 2910 ET</i>		
<i>D: Lazy 5 2757</i>		
6- Steven Moran, TX NSLS 19205	3/14/19	88152D
<i>S: NSLS 15299 ET</i>		
<i>D: Rule RSC 7444 ET</i>		

PAIR OF YEARLING EWES

1- Alexis Hickman, IN
2- Ty Thorson, WI
3- Joshua Wilson, NC

SENIOR EWE LAMBS

1- Campbell, Corbin & Clark Coyle, KY Terradise 2010	12/15/19	85969D
<i>S: Poe A7151-17 AI</i>		
<i>D: Poe 3308-13</i>		
2- Alexis Hickman, IN Flanders VIP 9230 QRNN PUN	9/20/19	86564D
<i>S: Alexander 1744 ET</i>		
<i>D: Flanders VIP 7588</i>		
3- Joshua Wilson, NC Lazy 5 3289 AI	9/8/19	87306D
<i>S: Williams 5656</i>		
<i>D: Lazy 5 3131 ET</i>		
4- Tasha Schlueter, TX Lanier 9053	10/5/19	86260D
<i>S: Lanier W7077</i>		
<i>D: Lanier B7035</i>		

SENIOR CHAMPION EWE

Clark Coyle, KY Poe 19028 AI	12/5/18	80495D
<i>S: Impact 13067 ET</i>		
<i>D: Poe 5306-15 AI</i>		
RESERVE SENIOR CHAMPION EWE		
Sara, Jacee & Justin Johnson, WI Johnson 2016	2/20/19	80950D
<i>S: J Johnson 15-R1</i>		
<i>D: J Johnson 1617</i>		

JANUARY EWE LAMBS - CLASS A

1- Ty Thorson, WI Metro 2008 AI	1/1/20	85590D
<i>S: Nelsens 19500</i>		
<i>D: Metro 401</i>		
2- Alexis Hickman, IN Flanders VIP 0283 RRNNFF BE AI	1/5/20	85795D
<i>S: Williams 5656</i>		
<i>D: Flanders VIP 6233 AI</i>		
3- Emily Stevens, OH Westlake 2015	1/10/20	86118D
<i>S: Westlake 0900 'Change Up'</i>		
<i>D: Westlake 0800</i>		
4- Tasha Schlueter, TX Lanier W7077	1/7/20	86261D
<i>S: Lanier W7077</i>		
<i>D: Lanier B7096</i>		
5- Joshua Wilson, NC Lazy 5 3330 ET	1/2/20	87313D
<i>S: Williams 5656</i>		
<i>D: Lazy 5 2757</i>		

JANUARY EWE LAMBS - CLASS B

1- Campbell, Corbin & Clark Coyle, KY Terradise 2009	1/15/20	85968D
<i>S: Poe A7151-17 AI</i>		
<i>D: Poe 8014-18 AI</i>		
2- NOC Sheep Center, OK NOC EV 8037-20001	1/24/20	87098D
<i>S: NOC PMB-31-8183</i>		
<i>D: NOC BR-638-8037</i>		
3- Braden Buckland, IN JFSS 0178	1/16/20	84807D
<i>S: JFSS 8026 'Gustavo'</i>		
<i>D: JFSS 5102</i>		
4- Ty Thorson, WI Rupnow 2026	1/17/20	85596D
<i>S: Nelsens 19500</i>		
<i>D: Rupnow 1304 AI</i>		

5- Alexis Hickman, IN Flanders VIP 0266 BE X	1/22/20	85227D
<i>S: Flanders VIP 8795 RRNN UP</i>		
<i>D: Flanders VIP 7443</i>		
6- Morgan & Madison Hauger, IN Hauger 20032	1/20/20	86941D
<i>S: Hauger 0245</i>		
<i>D: Hauger 0177</i>		
7- Linsey Eddy, OH Westlake 2020	1/21/20	86108D
<i>S: Westlake 0900 'Change Up'</i>		
<i>D: Westlake 0735</i>		
8- Sallie & Samantha Everhart, IN Hauger 20063	1/23/20	86321D
<i>S: Hauger 0245</i>		
<i>D: Hauger 0351</i>		
9- Joshua Wilson, NC Lazy 5 3317 AI	1/16/20	87310D
<i>S: Williams 5656</i>		
<i>D: Lazy 5 2981</i>		
10- Ariana Spina, OH Dendlinger WD 1070	1/16/20	87534D
<i>S: Westlake 0900 'Change Up'</i>		
<i>D: Westlake 0899</i>		
11- Alivia, Ainsley & Braylon, IL Storms 865	1/18/20	85415D
<i>S: Storms 743 'Truck Yeah'</i>		
<i>D: Storms 568</i>		

FEBRUARY EWE LAMBS - CLASS A

1- Camden Yake & Landrey Krieger, IN JFSS 0122	2/7/20	86146D
<i>S: Anthauer 18116 'Bandito'</i>		
<i>D: JFSS 5003</i>		
2- Campbell, Corbin & Clark Coyle, KY Terradise 2024	2/2/20	85976D
<i>S: Poe A7151-17 AI</i>		
<i>D: Terradise 6118</i>		
3- Linsey Eddy, OH Westlake 2010	2/3/20	86110D
<i>S: Westlake 0900 'Change Up'</i>		
<i>D: Westlake 0810</i>		
4- Alexis Hickman, IN Flanders VIP 0265 BE AI	2/10/20	85793D
<i>S: Williams 5656</i>		
<i>D: Flanders VIP 5024 AI</i>		
5- NOC Sheep Center, OK NOC WB-5094-20017 ET	2/1/20	87400D
<i>S: NOC CM-3076-8051</i>		
<i>D: NOC GM-1086-5094</i>		
6- Linsey Eddy, OH Westlake 2022	2/6/20	87115D
<i>S: Westlake 0900 'Change Up'</i>		
<i>D: Westlake 0845</i>		
7- Morgan Hauger, IN Wheaton A2125 ET QRNNFF	2/1/20	86166D
<i>S: Wheaton 8-822 QRNNFF ET 'The Big Chill'</i>		
<i>D: Wheaton 9-133 ET QR NN FF</i>		
8- Sallie & Samantha Everhart, IN Hauger 20046	2/3/20	86320D
<i>S: Hauger 0245</i>		
<i>D: Poe A7382-17</i>		
9- Joshua Wilson, NC Lazy 5 3300 ET	2/10/20	87308D
<i>S: Williams 5656</i>		
<i>D: Lazy 5 2955</i>		
10- NOC Sheep Center, OK NOC EV-4079-20022 ET	2/1/20	87402D
<i>S: NOC PMB-31-8183</i>		
<i>D: Northern Oklahoma QC-319-4073</i>		

11- Steven Moran, TX
 NSLS 00100 2/2/20 87969D
S: NSLS 19202 ET 606758
D: NSLS 13018 ET 43681D
D: Slack 5533 57244D

FEBRUARY EWE LAMBS - CLASS B

1- Sara, Jacee & Justin Johnson, WI
 Johnson 2122 2/12/20 86839D
S: Johnson 1937 605952
D: J Johnson 1604 71266D

2- Sara, Jacee & Justin Johnson, WI
 Johnson 1935 2/28/20 86844D
S: J Johnson 15-R1 603639
D: Johnson 2021 80949D

3- Ty Thorson, WI
 Metro 2037 2/22/20 85602D
S: Nelssen 19500 605699
D: Metro 1849 73720D

4- Linsey Eddy, OH
 Westlake 2025 2/13/20 86112D
S: Westlake 0900 'Change Up' 606241
D: Westlake 0720 75182D

5- Emily Stevens, OH
 Westlake 2030 2/13/20 86113D
S: Westlake 0900 'Change Up' 606241
D: Westlake 0720 75182D

6- Camden Yake & Landrey Krieger, IN
 JFSS 0150 2/25/20 86147D
S: Amthauer 18116 'Bandito' 605380
D: JFSS 7131 68425D

7- Linsey Eddy, OH
 Westlake 2040 2/20/20 86114D
S: Westlake 0900 'Change Up' 606241
D: Westlake 0802 75160D

8- Alexis Hickman, IN
 Flanders VIP 0296 BL 2/18/20 85233D
S: Dee Brothers LCC 3212 596228
D: Flanders VIP 5089 AI 54448D

9- Sidney Mcallister, OH
 Shroyer 2006 Yellow 2/15/20 87089D
S: Williams 5656 599700
D: Shroyer 1612 Yellow 57996D

10- Braden Buckland, IN
 JFSS 0245 2/16/20 84808D
S: JFSS 8026 'Gustavo' 605138
D: JFSS 5053 57297D

11- Alivia, Ainsley & Braylon Porter, IL
 Storms 1101 2/25/20 85420D
S: Storms 743 'Truck Yeah' 604530
D: Storms 538 59785D

12- Joshua Wilson, NC
 Lazy 5 3304 ET 2/19/20 88411D
S: Williams 5656 599700
D: Lazy 5 2955 66890D

MARCH EWE LAMBS

1- Sara, Jacee & Justin Johnson, WI
 Johnson 2197 4/5/20 86885D
S: Johnson 1937 605952
D: J Johnson 1321 71259D

2- Campbell, Corbin & Clark Coyle, KY
 Terradise 2025 3/2/20 85977D
S: Poe A7151-17 AI 602664
D: Poe A7012-17 AI 68323D

3- Camden Yake & Landrey Krieger, IN
 JFSS 0153 3/17/20 84810D
S: JFSS 8026 'Gustavo' 605138
D: JFSS 5018 57312D

4- Linsey Eddy, OH
 Westlake 2019 3/2/20 88291D
S: Westlake 0900 'Change Up' 606241
D: Westlake 0935 83699D

5- Alexis Hickman, IN
 Flanders VIP 0329 3/10/20 85241D
S: Flanders VIP 9111 QRNN BE 605523
D: Flanders VIP 6240 AI 61803D

6- Ty Thorson, WI
 Metro 2046 3/2/20 85604D
S: Nelssen 19500 605699
D: Rupnow 1979 79947D

7- Ty Thorson, WI
 Metro 2047 3/3/20 85605D
S: Nelssen 19500 605699
D: Metro 1608 61551D

8- Joshua Wilson, NC
 Lazy 5 3342 3/20/20 87317D
S: Williams 5656 599700
D: Lazy 5 2955 66890D

9- Landrey & Lynnly Krieger, IN
 JFSS 0026 3/5/20 84730D
S: JFSS 8026 'Gustavo' 605138
D: JFSS 03 'Prada' 62220D

10- NOC Sheep Center, OK
 NOC TC-8729-20032 3/2/20 88176D
S: NOC PMB-31-8183 605153
D: Burch 8011 72655D

11- Emily Stevens, OH
 Westlake 2007 3/1/20 86116D
S: Westlake 0900 'Change Up' 606241
D: Westlake 0700 71828D

12- Joshua Wilson, NC
 Lazy 5 3347 ET 3/10/20 87318D
S: Williams 5656 599700
D: Lazy 5 2757 52467D

13- Addison Winger, IN
 JFSS 0346 4/2/20 87013D
S: JFSS 9155 'El Padrino' 606918
D: JFSS 8086 74688D

14- Alivia, Ainsley & Braylon Porter, IL
 Storms 1100 3/1/20 854230D
S: Storms 835 AI 'Pizazz' 605824
D: Storms 763 85421D

15- Alivia, Ainsley & Braylon Porter, IL
 Storms 1112 3/21/20 88434D
S: Storms 743 'Truck Yeah' 604530
D: Storms 698 AI 73934D

PAIR OF EWE LAMBS

- 1- Sara, Jacee & Justin Johnson, WI
- 2- Campbell, Corbin & Clark Coyle, KY
- 3- Alexis Hickman, IN
- 4- Ty Thorson, WI
- 5- Linsey Eddy, OH
- 6- Morgan & Madison Hauger, IN
- 7- Emily Stevens, OH

JUNIOR CHAMPION EWE

Sara, Jacee & Justin Johnson, WI
 Johnson 2122 2/12/20 86839D
S: Johnson 1937 605952
D: J Johnson 1604 71266D

RESERVE JUNIOR CHAMPION EWE

Sara, Jacee & Justin Johnson, WI
 Johnson 2197 4/5/20 86885D
S: Johnson 1937 605952
D: J Johnson 1321 71259D



CHAMPION SLICK-SHORN EWE

Clark Coyle, KY
 Poe 19028 AI 12/5/18 80495D
S: Impact 13067 ET 597191
D: Poe 5306-15 AI 78537D



RES. CHAMPION SLICK-SHORN EWE

Sara, Jacee & Justin Johnson, WI
 Johnson 2122 2/12/20 86839D
S: Johnson 1937 605952
D: J Johnson 1604 71266D

PREMIER SLICK-SHORN EXHIBITOR

Joshua Wilson, NC



BEST HEADED EWE

Jenna Sullivan, CT
 Sullivan 2006 2/13/20 607616D
S: Larson L & L 17-752 ET 605175
D: Bobendrier 14-10 NNP RR 48713D



BEST HEADED RAM

Bobendrier Hampshires, MN
 Bobendrier 20-22 NNP RR 1/19/20
 S: Bobendrier 17-47 NNP RR
 D: Bobendrier 15-160 NNP RR

85349
 603464
 61597D



MIXED PAIR - BRED AND OWNED

1- Jenna Sullivan, CT



YOUNG FLOCK

1- Sara, Jacee & Justin Johnson, WI



FLOCK

1- Campbell, Corbin & Clark Coyle, KY
 2- Bobendrier Boys, MN
 3- Alexis Hickman, IN

**THE
 Golden Lane Farms
 BREEDING PROGRAM
 HAS A BRAND
 NEW HOME.**

Flatland Hampshires is now home to the GLF brood ewe flock, a select group of yearling ewes and a proven stud ram. We are excited to build upon the Golden Lane Farms legacy as we begin our own Hampshire program. Take a look at one of our first lambs below...we like what we see!

- *Kristy and Chad*

Flatland HS & BG 2020 / Fall Ewe Lamb
 Sire: Baa Baa Acres 238 "Collusion"
 Dam: GLF 1608 By Caskey "New Edition"



GLF 1930 / SD State Fair Res. Champ Ewe
 Owned by Marshall Sheep Company
 The dam of 1930, GLF 1705, is already creating excitement at Flatland with the birth of her Jan. 19th ram lamb.

FLATLAND
 Hampshire Sheep & Boer Goats

KRISTY MAHRT AND CHAD SARGENT

PH: 701-809-4116 / PH: 218-784-8679

ADA, MINNESOTA



Find us on social media at Flatland Hampshire Sheep & Boer Goats.

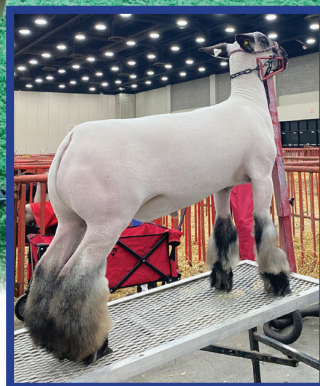
Watch for our Flatland consignments at upcoming shows and sales!

ONE *Sweet* WEEK...



JOHNSON 1988
Sugar Shack

**SUPREME CHAMPION RAM NAILE JR. SHOW
CHAMPION SLICK SHORN RAM NATIONAL HAMPSHIRE SHOW**



**RES. CHAMPION SLICK SHORN EWE
NATIONAL HAMPSHIRE SHOW
JOHNSON 2122**



**RES. JR. CHAMPION EWE
NATIONAL HAMPSHIRE SHOW
JOHNSON 2197**



**RES. SR. CHAMPION EWE
NATIONAL HAMPSHIRE SHOW
JOHNSON 2016**

Jason
JOHNSON
SHOW LAMBS

Watch for offspring by SUGAR SHACK and the rest of our stud ram line-up in our spring online sales!

Jason, Sasha, Sara, Jacee and Justin Johnson
Delavan, WI / PH: 608.201.5742
JASONJOHNSONSHOWLAMBS.COM

Introducing The New Directors

Jesse Robbins

My start in the sheep industry was a registered Hampshire ewe lamb my grandfather purchased for me as an FFA project in 1996. My brother, Dave, got an ewe lamb as well and together we started Robbins Brothers Hampshires in Santaquin, Utah. We loved raising those original ewes so much that we are still growing and improving our flock 25 years later. Since then, our flock has grown to almost 50 ewes. We raise both frame and wether-type Hamps as well as some Hamp cross wether dam ewes. We recently started a small flock of registered Dorsets. We try to serve the purebred, commercial and club lamb markets. We also exhibit our sheep at the Utah State Fair every year, as well as other local fairs and stock shows. We have also sold rams in the Utah Ram Sale for many years.

I grew up with livestock and horses and showed horses in 4-H growing up and livestock in FFA. I competed in the livestock judging competitions and was a member of the FFA State Champion Livestock judging team in 1999. It was awesome competing at the National Convention in Louisville! My brother and I continued to raise sheep through college and now that we both have our own families. My wife Katie grew up in Los Angeles County, California and the only time she saw sheep was at the county fair. The farm life has been a big adjustment for her! She and I are the parents of four amazing kids (Noah, Lucy, Hudson and Lincoln) who also love life on the farm. In addition to co-managing the sheep flock, I work for a company that provides Customer Relationship Management software for car dealerships where I manage the support team.

I'm excited to work with the other board members and with our Junior Association. From my experience as a first-generation Hampshire producer, I feel very strongly that getting youth involved in raising Hampshire sheep will continue to help our breed succeed. When we were starting our flock, my brother and I received a lot of help from Alvin McNeil. He has continued to serve as a mentor and friend for many years. My brother and I have also had the opportunity to help several young people start their own flocks of Hamps and have enjoyed watching their success with the breed. I have also enjoyed helping my brother and sister-in-law with their 4-H club and seeing the excitement the kids have for showing sheep for the first time, including my two oldest children.

I love the versatility of the Hampshire breed and all it has to offer the sheep industry. Our Association does a great job of promoting the breed and I will do all I can to advance the breed and help our industry be successful. I enjoy the friendship of many Hampshire breeders in Utah and the surrounding states and I look forward to meeting more Hampshire breeders in District 2 and around the country.



Doug McAllister

Hello. My name is Doug McAllister. My wife and I own and operate Alpha and Omega Genetics, a small farm in Western Ohio, where we've been blessed to raise two beautiful daughters who love showing and raising sheep. Over the past 12 years we've raised and exhibited market lambs, fitted and slick-shorn Hampshires, fitted and slick-shorn Dorsets, Dorset Advantage and slick-shorn Suffolks. With time, this has developed our current 80-head flock (45 being Hampshire) and a more recent addition of a small wool flock.

I currently serve as:

Member of the Ohio Sheep Improvement Association, LEAD Council Executive Committee
President of the OSIA LEAD Council
Member of The Ohio Youth Livestock Expo Sheep Committee
Member of the Arcanum MVCTC FFA Advisory board
Ruminant advisor to the Swine Coolers 4-H Club
Member of American Hampshire Sheep Association Board of Directors
Elder at Castine Church

I came into this role with an open mind, regarding specific goals for AHSA. My plans are to learn about the team with which I'm working, identify where I can be the most helpful and apply my skills to the goals of the organization.

I look forward to serving the organization and members in my district. Thank you.



New Name! New Location! New Management!

May 6 - 8, 2021

**Darke County Fairgrounds
800 Sweitzer St, Greenville, Ohio**

Formerly "Big Ohio Sale"



Grand Champion Ram - Northern Star Livestock

*Eastern Regional Hampshire
Sale 2019 Results*

**Entries
close
March 20!**



Res. Grand Champion Ram - Plaza Livestock



Grand Champion Ewe - Marshall Sheep Co.

Auctioneers:
Gary Saylor
Danny Westlake
Bill MacCauley

**JUDGE FOR
HAMPSHIRE:**
Mark Johnson, IL



Res. Grand Champion Ewe - Golden Lane Farms

**SHOW SCHEDULE: FRIDAY, MAY 7
CATTLE PAVILION, 8 A.M.**

Southdown followed by Suffolk, Polled Dorset,
Horned Dorset, Oxfords,
Shropshire (National Show & Sale),
Hampshires (Eastern Regional Show & Sale)

**SALE SCHEDULE: SATURDAY, MAY 8
CATTLE PAVILION, 9 A.M.**

Breed order same as Show

Entry Information is available Online at www.selectls.net



Gary: 937-597-7214 - gary@selectls.net
Pat: 937-935-1975 - pat@selectls.net
Jim: 937-658-3119 - jim@selectls.net
Dan: 937-243-5111 - dan@selectls.net

P.O. Box 25, Rushsylvania, OH 43347

www.selectls.net

2021 MIDWEST STUD RAM SALE SCHEDULE

Tentative as of 2/1/21, Subject to Change before Final Publication in Catalog



MONDAY – JUNE 14th

FFA Building

9am to 6pm - Open for Consignor/Animal Check-in

Sheep Barn (All Junior Shows)

9am - **Leroy Boyd Katahdin Junior Show** Judge: Justin Benz
(all shows will immediately follow in order listed)

National Texel Junior Show Judge: Justin Benz

1pm to 5pm - Paint Crews available

Best Western State Fair Inn

6pm - Texel Sheep Breeders Society Annual Meeting & Banquet

TUESDAY – JUNE 15th

FFA Building

7:30am to 6pm - Open for Consignor/Animal Check-in

Sheep Barn

7am to 10am - Paint Crews available

8am - **Katahdin Show** Judge: Evan Snyder
(all shows will immediately follow in order listed)

Montadale Show Judge: Mark Johnson

NORTH RING

Texel Show Judge: Evan Snyder

White Dorper/Dorper Show Judge: Evan Snyder

SOUTH RING

Corriedale Show Judge: Mark Johnson

Polypay Show Judge: Alex Wolf

Natural Colored Show Judge: Alex Wolf

Rambouillet Show Judge: Alex Wolf

Columbia Show Judge: Alex Wolf

30 min following conclusion of shows-

Jim & Dorothy Handy Montadale Junior Show Judge: Justin Benz

Swine Barn

10am to 5pm - Weigh-in Stations Open for all WS/WD lambs

12am to 5pm - Paint Crews available

WEDNESDAY – JUNE 16th

FFA Building

7:30am to 6pm - Open for Consignor/Animal Check-in

Dr. Taylor Woods Reception Hall

12pm - Montadale Sheep Breeders Assn Banquet & Annual Meeting

3pm - Producer Panel & NSIP Update, by MWKHS

Sheep Barn

8pm - Ice Cream Social at Katahdin pens, sponsored by MWKHS

Swine Barn

7am to 5pm - Paint Crews available

NORTH RING

8am - **Shropshire Show** Judge: John Mrozinski
(all shows will immediately follow in order listed)

Southdown Show Judge: John Mrozinski

Judge for all Wether Sires & Dams: Brent Jennings

Dorset Wether Sire & Dam Show

Dorset Advantage Wether Sire & Dam Show

Speckle-Faced Wether Sire & Dam Show

Natural Colored Wether Sire & Dam Show

SOUTH RING

8am - **Hampshire Show** Judge: Brian Schermerhorn
(all shows will immediately follow in order listed)

Suffolk Show Judge: Jeff Held

Tunis Show Judge: Brian Schermerhorn

Horned & Polled Dorset Show Judge: Jeff Held

10am to 5pm - Weigh-in Stations Open for all WS/WD lambs

6pm - **LARRY MEAD SUPREME CHAMPION EVENT**

All-American Junior Show "Big Ticket" Benefit Auction

6:30pm - Sedalia Lamb Dinner, sponsored by PURINA

THURSDAY – JUNE 17th

FFA Building

7:30am to 6pm - Open for Consignor/Animal Check-in & Buyer Check-out

Dr. Taylor Woods Reception Hall

8am - United Suffolk Sheep Association Informational Meeting

Sheep Barn

6:30am - Coffee, Donuts & Bagels at Katahdin pens, sponsored by MWKHS
Buyer Numbers available in the barn beginning at 7:30am

8am - **INTERNATIONAL Katahdin Sale**
(all sales will immediately follow in order listed)

NATIONAL Montadale Sale

NATIONAL Texel Sale

NATIONAL Natural Colored Sale

Corriedale Sale

White Dorper/Dorper Sale

Polypay Sale

Rambouillet Sale

Columbia Sale

Swine Barn

8am - **Club Lamb Show** (all shows will immediately follow in order listed)
Judge for Club Lambs + all Wether Sires & Dams: Brent Jennings

Hampshire Wether Sire & Dam Show

Suffolk Wether Sire & Dam Show

Crossbred Wether Sire & Dam Show

3pm - Refreshments at Tunis pens, sponsored by Midwest Tunis Assn

6pm - **SUPREME CHAMPION WETHER SIRE & DAM SHOW**
directly followed by the PURINA Forum

FRIDAY – JUNE 18th

FFA Building

7:30am to 6pm - Open for Buyer Check-out during sales

Swine Barn

Buyer Numbers available in the barn beginning at 7:30am

7:30am - Morning Donuts, provided by AHSA & USSA

8am - Coffee & Donuts at Tunis pens, sponsored by Midwest Tunis Assn

8am - **NATIONAL Hampshire Sale**

(all sales will immediately follow in order listed)

NATIONAL Suffolk Sale

NATIONAL Tunis Sale

Southdown Sale

Horned & Polled Dorset Sale

Shropshire Sale

NATIONAL Dorset Wether Sire & Dam Sale

NATIONAL Dorset Advantage Wether Sire & Dam Sale

Speckle-Faced Wether Sire & Dam Sale

Natural Colored Wether Sire & Dam Sale

SATURDAY – JUNE 19th

FFA Building

7:30am to 6pm - Open for Buyer Check-out during sales

Swine Barn

Buyer Numbers available in the barn beginning at 7:30am

7:30am - Morning Donuts, provided by AHSA & USSA

8am - **Club Lamb Sale**

(all sales will immediately follow in order listed)

NATIONAL Hampshire Wether Sire & Dam Sale

NATIONAL Suffolk Wether Sire & Dam Sale

Crossbred Wether Sire & Dam Sale

REMEMBER Midwest Sale has NEW dates...
Sale will start the 2nd Monday after Memorial Day!

2021-JUNE 14-19 2022-JUNE 13-18 2023-JUNE 12-17

www.midwestsale.com

Follow us: Midwest Stud Ram Sale



I AM NOT
A COW.



And you wouldn't feed me like one, either. As a sheep, I have specific nutritional needs and requirements, and no one knows this better than Purina. Unlike commodity blends fed to multiple animals, Purina's sheep feed is research-tested and unique to my species, formulated to optimize production and help producers achieve their operational goals. Learn more at your local retailer or go to purinamills.com/ImASheep



FEED GREATNESS®

© 2021 Purina Animal Nutrition LLC. All rights reserved.

Mineral: The Key To Flock Breeding Success

Feeding a quality mineral is a simple, cost-effective way to optimize breeding success.

By: Maggie Amburgey, small ruminant technical specialist with Purina Animal Nutrition

While lambing season gets all the hype, breeding season is the key to your flock's success. A successful breeding season means more ewes pregnant, more lambs on the ground and more money in your pocket. And a key to breeding success is offering your flock mineral. Many producers don't use mineral or only use mineral if they have a problem pop up to save on cost. But offering a mineral – or offering mineral longer – can more than pay for itself through optimized reproduction.



Follow these mineral tips for breeding success:

Feed mineral longer

Feeding mineral a month before breeding is common practice, but it isn't enough time for ewes to get the most benefit from the mineral. Instead, start offering mineral at least 60 days before breeding and continue feeding throughout gestation. A longer timeline allows sheep to maximize intake, correct mineral deficiencies and achieve optimal breeding results. Want to take your flock up a notch? Feed mineral year-round to help prevent deficiencies and the resulting challenges before they even happen. Feeding a mineral year-round can save you in the longrun. When you factor in the cost of potential lost pregnancies, poor conception rates, substandard performance and death loss, you realize how much a good mineral program can make a difference.



Optimize mineral intake

One of the main questions we get from producers is how much mineral sheep should eat. Low intake means your flock isn't getting enough nutrients, and high intake means you're paying for more mineral than sheep need. Sheep will often overconsume mineral when it's first offered. This is normal, since sheep may be eating more to compensate for a mineral deficiency. Intake will level off several days after mineral is introduced and deficiencies are corrected. Underconsumption is usually a result of mineral location. Place mineral feeders in high-traffic areas where sheep spend most of their time. Then, gradually shift mineral location to underused areas of pasture. Keep feeders clean and protected from the elements. Look for a mineral that's formulated for optimal intake levels to avoid over or underconsumption.

Don't forget the calcium

One of the biggest things to look for in a mineral, especially when it comes to supporting reproduction, is calcium. Bioavailability, or the ability to absorb the calcium and other minerals rather than passing through the animal, is another key feature. Look for a mineral with 90% or greater bioavailability to maximize effectiveness. Feeding a complete, bioavailable mineral ensures sheep get all the nutrients they need. The mineral form can play a role, but the key things to evaluate is the calcium to phosphorus levels, mineral bioavailability and salt level.

Mineral blocks are often used because they require less labor – you just set it and forget it. But, unlike mineral blocks which typically only contain trace minerals, Purina® Wind and Rain® Sheep Mineral is fortified with high levels of calcium as well as organic zinc, manganese and cobalt to help support reproduction.

Providing a mineral year-round is a great option for producers looking to enhance their breeding program. Maggie and I are sheep producers ourselves and know first-hand what's needed to support flocks and maximize profit potential – and we formulate our products with that in mind.

Learn more about feeding mineral at purinamills.com/sheep-feed.

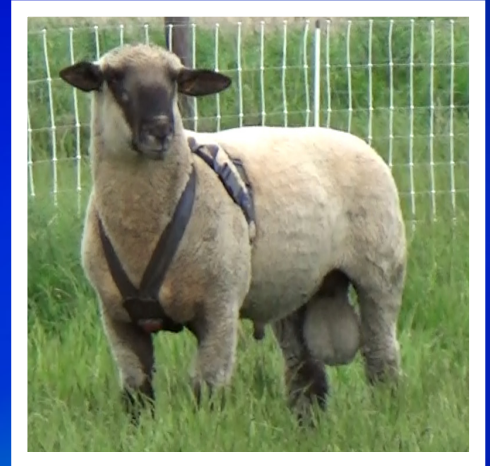


KLEINERT HAMPSHIRE

"Quality Breeding Lasts Forever"

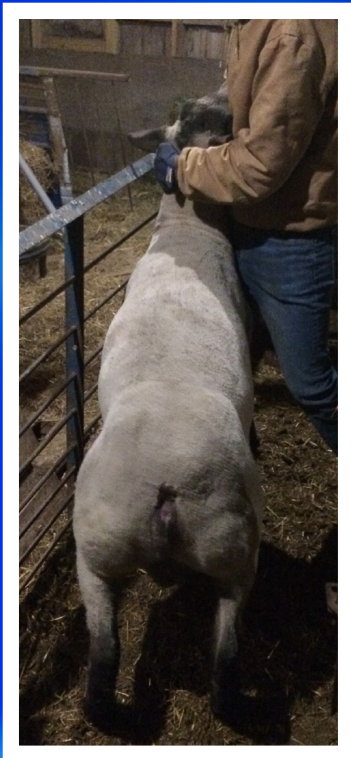
KLEINERT 5236
(KLEINERT 5113 X KLEINERT 4549)

Lead Sires For 2021



SAMPLE OF 2021 LAMB CROP

KLEINERT 5113
(MILLER 0-470 X KLEINERT 4805)



KLEINERT 5340
TALKING TRASH X KLEINERT 5196
(MILLER 470) X KLEINERT 4593

April 3 - Online Spring Sale
May 1 - Annual Online Production Sale
June 1 - AHSA Online Sale
Sales hosted at wlivestock.com



Inquires or farm visits welcome

MIKE KLEINERT | KLEINERT HAMPSHIRE
2873 N 1600 EAST RD. | CLIFTON, IL 60297
CALL OR TEXT: 815.383.0962 | KLEINERTHAMPSHIRE@YAHOO.COM | WWW.KLEINERTHAMPS.COM

Schedule of Events • Springfield, Illinois _____ AAJS

(schedule may be subject to change)

Wednesday, June 30th

ALL DAY All Barns Open for Arrival
10:00 a.m. - 5:00 pm **Welcome Table Open**
1-5 p.m. Vet Check Available
3-5 p.m. Early pick up of entry packets & Exhibitor T-Shirts

Thursday, July 1st

Noon All sheep must be in place
8-Noon **Welcome Table Open**
- Vet check Continues
- Pick up of Entry Packets & Exhibitor T-Shirts cont.
9:00 a.m. Registration Paper Check -In
- 1:00 pm (make sure Health Papers have been vet checked)
- Promotional & Wool Show Check-In
10:30 a.m. Market Lamb Weigh In
- 1:00 p.m. & Classifying
Noon: Lamb Camp 1st Session
1-5 p.m. Skill-A-Thon open
1-3 p.m. Judging Contest
2-5 p.m. Promotional & Wool Show Judging
3:00 p.m. **Ice Cream Social**
(Sponsored by Prairie Farms)
3:30-5 p.m. Weaver Fitting Clinic
4:00 p.m. Lead Line & Dress A Sheep Competition

Friday, July 2nd

8:00 a.m. Opening Ceremonies, Group & State Photos
9:30 a.m. Skill-A-Thon & Virtual Shearing Open
9:30 a.m. Individual & Team Showmanship:

RED Ring - Judge: John Mrozinski

Class 1: Age 4 & under
Class 2: Age 5
Class 3: Age 6
Class 4: Age 7
Class 5: Age 8
Class 6: Age 9
Team Class 1 & 2 (breaks posted)

WHITE Ring - Judge: Neal Knapp

Class 7: Age 10
Class 8: Age 11
Class 9: Age 12
Class 10: Age 13
Class 11: Age 14
Class 12: Age 15
Team Class 3 & 4 (breaks posted)

BLUE Ring - Judge: Rick Klampe

Class 13: Age 16
Class 14: Age 17
Class 15: Age 18
Class 16: Age 19
Class 17: Age 20-21
Team Class 5 & 6 (breaks posted)

NOON **AAJS Sales and Thank**
- 4:00 pm **You Note Booth Open**
all exhibitors please write at least one note!

2:00 p.m. Breed Classes Begin
RED Ring - Judge: John Mrozinski
Border Leicester
Dorset Advantage
Corriedale (move to other ring if needed)
WHITE Ring - Judge: Neal Knapp
Cheviot
Lincoln
Columbia (move to another ring if needed)
BLUE Ring - Judge: Rick Klampe
Oxford
Tunis
Rambouillet (move to other ring if needed)

5:00 p.m. Skill-A-Thon & Virtual Shearing closes for the day

7:00 p.m.. **Blome Pizza Party**
3-on-3 Basketball Tournament
at Commodities Pavilion

Saturday, July 3rd

7:00 a.m. **Exhibitor Breakfast**
8:00 a.m. Breed Classes Begin
RED Ring - Judge: John Mrozinski
Southdown
Romney
Shetland (move to other ring if needed)
WHITE Ring - Judge: Neal Knapp
Natural Colored
Hampshire
Targhee (move to other ring if needed)
BLUE Ring - Judge: Rick Klampe
Montadale
Suffolk
Horned Dorset
Cotswold
Texel (move to other ring if needed)

9:00 a.m. Skill-a-thon & Virtual Shearing opens

9:00 a.m. **AAJS Sales and Thank**
You Note Booth Opens
all exhibitors please write at least one note!

10:00 a.m. **Raffle tickets for Sale Incentive**
turned into AAJS Booth

10:00 a.m. **AAJS Scholarship must be**
turned in to Show Office

NOON Lamb Camp 2nd Session
2:00 p.m. Skill-a-thon Closes
4:00 p.m. Virtual Shearing Closes
4:00 p.m. **AAJS Sales and Thank**
You Note Booth Closes

Sunday, July 4th

7:00 a.m. **Exhibitor Breakfast**
8:00 a.m. Breed Classes Begin
RED Ring - Judge: John Mrozinski
Polled Dorsets
Merino
WHITE Ring - Judge: Neal Knapp
Shropshire
Katahdin
BLUE Ring - Judge: Rick Klampe
White Dorper
Dorper
Babydoll Southdown (move to another ring if needed)
9:00 a.m. **AAJS Sales and Thank**
- NOON **You Note Booth Opens**
all exhibitors please write at least one note!

11:00 a.m.. **Root Beer Floats**
(Sponsored by the National Junior Southdown Association)

Immediately Following Completion of shows:

Three-on-Three Basketball Final Game - on grounds
20 mins Following Completion of B-Ball Game:
Closing Ceremonies
All-American Lamb Camp Graduation
Awards and Raffle Drawing

All Sheep released Immediately following completion of Closing Ceremonies.
For the health of the animals:
PLEASE ONLY LOAD TACK prior to closing ceremonies **ANY SHEEP LEAVING EARLY WILL FORFEIT PREMIUMS, PENS WILL BE CHECKED.**

12:00 a.m. **BARN OFFICIALLY CLOSES**
ALL SHEEP must be OUT!



Don't forget to bid on
Silent Auction Basket at the Show!

Executive Show Committee and Staff:

Debra Hopkins, Show Chairman
Carrie Taylor-Kelly • Jo Bernard • Dave Trotter • Nancy Minitier • Judy Moore • Jeff Ebert • Barb Bishop
Melanie & Darrell Hall, Brad & Julie Angus, Jeremy & Cassie Crouch, Brian & Jill Mohr & Lanny & Jamie Bowman, Illinois Reps

Judges: John Mrozinski, IN
Rick Klampe, OR and Neal Knapp, IN
Announcer: David Trotter, IN & Rusty Harmeyer, IN
Photographer: Emily Adcock, IL
Ringside Magazine

YOUTH CONNECTION

What would you tell your younger self if you could go back 50, 45, even just 40 years in time? This is the question that I keep asking myself on behalf of you. What did I wish I knew then, that I've learned over the years?

When I was about 7 with very few responsibilities, life was good. Growing up on a southern Iowa dairy farm, that was full of repetition. The old saying, the Cows aren't going to milk themselves is definitely true! Each day at 4 o'clock Am and Pm, the hum of the milk pump would start and milking would begin. For about 2 hours twice a day, you knew where dad could be found. It was a constant that even a young boy could learn to trust. No matter the weather cold, rain, heat, you could set your clock by dad being in that milk parlor. The sound of WHO radio station playing and the pulsation of milk machines extracting that glorious nectar. Milk, that's right milk, it was our thing, our means of survival, our whole being of existence depended on it. As a grade A Dairy we had many standards to meet, to produce a quality healthy product for you the consumer.

I took all of this for granted at age 7, not a care in the world, because our parents made the rules and decisions. Outside of those we were free to roam. Sure there were a few chores, like feeding bottle calves and carrying wood to the house for our wood burning stove our main source of heat. Daily we would pitch cow manure piles out of the free stalls to help keep the cow's udder clean.

Looking back I would like to tell that 7 year old to enjoy the moment, those simple times of work and play. See that is the constant you need for personal growth. The learned responsibility that comes with doing a job and doing it well, so as to be trusted with more. Yes, to parents of young children, they need structure, positive feedback and certain consequences when they don't follow through. I never remember my dad ever spanking me. I worshipped the ground he walked on and wanted to be with him often. I don't remember hearing my parents argue (even though I expect they did). They did a great job of keeping the day to day to themselves and allowed us to be children. We always had plenty whether it was food, games, clothes etc. Sure we had hand me downs and we never ate out. Most day trips included a take along lunch and drink. We never realized how poor we really were, it's just the way my parents did it.

See parents it's up to you, to control how your child will see each and every situation! You can make it the Best of times or the worst, you decide!

Twelve years old, wow not a kid anymore. Summers were busy and wonderful all at the same time. Making hay, building fence, fishing, and of course the annual county fair. Hay making was awesome a chance to do what men do, drive a tractor mowing or raking hay. We never turned down a chance to drive anything. No matter how hot or dirty the job, we relished at the chance to prove our worth. Sure there were times my driving skills were less than perfect. But the lesson here is, allow your child the opportunity to fail. It doesn't matter the task but rather allow them to do it. Learning comes from doing.

In the Fall it was back to school. But not just school, now you are a Junior high student. Bottom of the heap, scum of the school. The little peon to be picked on (today you call it bullying). It's went on for years and probably will forever (and probably should). See it's a rite of passage, like earning a badge by enduring and making it through without your parent there to pick you up. This is where you start to find out what you're made of. See it wasn't easy for me, a hefty, four eyed, clumsy and crippled new seventh grader. I had broken my hip the day after sixth grade ended for summer vacation. Doctor orders were to walk on crutches a full year. The first week of school several kids helped with books and such but that ended quickly.

SELECTION IN YOUR FLOCK

Which meant navigating the three floor school with hundreds of stairs and books up to me. I don't remember my mom or teachers trying to make it easier either. How was I going to get through the day with all the obstacles? Nothing was handicap accessible, it was just the way it was.

The lesson here is, it doesn't matter what life throws at you, catch it and make it into who you are. Own the attitude if it's to be it's up to me, no matter if you're 12 or 50 its true. The years fly by and you wake up 17! A man (at least you think so) with emotions that can be huge and overwhelming. Your body is telling you one thing, while your mind is saying another. You're confused and can't see past the end of the next school hour. This is one of the most important times in your life and you're an absolute mess. How can you make sense of all the emotions, education choices, and family responsibilities? Slow down and breathe, just breathe, you're going to make it through this I promise.

There are a few things that come to mind, that I wish someone would have told me! See I already had my life planned out. Graduate, then college, get job, get a wife, family, 100 head cow calf operation and retire at 50. Sound familiar, well unfortunately there is no map or directions that I knew of to accomplish these goals. Unless you are growing up in a different world than mine, you need help. We all need help every day all the time. That's the lesson you need to learn here period. Yes we all need guidance. Okay and where do you get this guidance?

You will become in life by the choices of what influences you.

- 1) The people you associate with
- 2) The books you read
- 3) The music ,Tv ,and videos you watch
- 4) Your Faith in Jesus Christ

You will become most like the people you are around, those you spend time with, what they do, how they act, and where they go. So put yourself in a position to be around positive people that have what you want to have. Books are a part of learning from others. Find and read books like, How To Win Friends and Influence People, Magic of Thinking Big, and Men Are From Mars and Women Are From Venus. There are hundreds of positive self-help books available including the bible. I often wonder why teachers don't recommend them for personal reading time?

Music and videos are what feed your mind, junk in junk out. So be careful what you put in that mind of yours. While relaxing enjoy the positive visual learning, making the most out of your time.

Number four is by far the most important. Learning to trust the Lord is hard for most of us. Because this world seems hell bent on taking Jesus out of everything. But we should not be surprised, because scripture tells you this will happen. From personal experience, I simply remember to ask myself what would Jesus do and follow that answer.

To each of you in this New Year search for truth and understanding.

May God bless you all
Ed Hewlett

Remembering Jay Clyde Brubaker

Jay Clyde Brubaker, 84, died February 26, 2021, at his Robesonia, PA home. Mr. Brubaker was born March 15, 1936 in Ephrata, PA to Daniel and Amy Brubaker. Clyde, in his younger years, participated in the Lancaster County 4-H program showing beef cattle and sheep. It was there he met his future wife, Dorothy (Stehman), of which they have been blessed to spend 64 years together. As an avid Hampshire sheep enthusiast, he and his family traveled across the country exhibiting and consigning to sales. Clyde served on the American Hampshire Sheep Association board of directors for 3 terms and a total of 9 years. Clyde also served as President of the Pennsylvania Hampshire Sheep Association. It was through this interest where he met many lifetime friends across the United States. Locally, Clyde was a 4-H leader within the Lancaster County program and later the Lebanon County 4-H program. He served on the committee of the Penn State Livestock Evaluation Center and was the Chairman of the Pennsylvania Farm Show open sheep show for many years. The Pennsylvania Farm Show was a tradition for the family where Clyde was honored for his many years of service.

Additionally, Clyde served actively on many sheep show and sale committees across the state. He won honors as a 4-H member placing second at the National 4-H Livestock Judging contest and later enjoyed judging sheep shows and teaching others. Additionally, Clyde was an active member of the Richland Church of the Brethren where he served as an elder, deacon and taught Sunday School. Clyde enjoyed traveling, singing, camping, fishing, carpentry and livestock. He was, most recently, employed as a feed nutritionist with Vigortone. Clyde served as Regional Sales Manager for the company. Previously, he had worked for Pennfield formerly Miller and Bushong. He was preceded in death by his parents Daniel & Amy Brubaker. Surviving in addition to his wife Dorothy is a son Ken (Ginger) Brubaker, Harrisonburg, VA; a daughter Sarah (Tim) Fleener, Robesonia, PA; three grandsons; Kyle (Jen) Fleener, Gettysburg, PA; Kurt (Miranda) Fleener, Robesonia, PA; and Clay (Cleo) Brubaker, San Antonio, TX; 3 great grandsons and 2 great granddaughters. Additionally, surviving is a sister Gloria Shober, Litz, PA and brother Dan (Linda) Brubaker, Fresno, CA and nephews. An invitation only service will be held to honor Clyde. However, sharing of remembrances are welcome sent to the home address: 263 South Mountain Road, Robesonia, PA 19551. In lieu of flowers, contributions may be made to: 1) Richland Church of the Brethren, 215 S. Race Street, Richland, PA 17087 or 2) American Hampshire Sheep Association, 305 Lincoln Ave., Wamego, KS 66547.



Remembering Joy Ann (Gallus) Hickman

Hickman (Gallus), Joy Ann Age 69, of Walla Walla, WA passed away peacefully on Wednesday, December 9, 2020 following a brief illness. She was born November 8, 1951 the daughter of Ralph and Shirley Gallus. Joy had spent most of her life in Minnesota working in the medical device field. Upon their retirement, Jim & Joy moved to Walla Walla to be near their youngest grandchildren. She loved tending to her beautiful flower gardens, and Hampshire sheep flock. Joy was preceded in death by her parents, sisters, Sandy, and Molly & daughter, Katie. She will be greatly missed by her husband, Jim; children, Beau (Genevieve) and Charles (Denielle); grandchildren, Justin, Brenden, Sloane, and Shepard; as well as her brothers & sisters. A private service will take place Summer 2021 in Minnesota. In lieu of flowers, please make a donation to your local food bank.

CONSISTENT GENETICS CONSISTENT RESULTS

2020 NATIONAL HAMPSHIRE SHOW



BIG

RIKOW 9060
RESERVE SENIOR CHAMPION RAM
SECOND FALL RAM LAMB



CASKEY A044

SECOND FEBRUARY RAM LAMB
SIRE BY "FEARLESS"



CASKEY A240

THIRD MARCH RAM LAMB
SIRE BY "FEARLESS"



GRAND CHAMPION EWE

FIRST JANUARY EWE LAMB
NATIONAL JUNIOR SHOW
SIRE BY "CASKEY 8459"
SHOWN BY BLANEY WOODS, KS
PURCHASED IN OUR 2020
SHARING THE GENETICS
ONLINE SALE



CASKEY A042

SECOND FEBRUARY EWE LAMB
SIRE BY "BIG BUCK"



CASKEY A131

THIRD MARCH EWE LAMB
SIRE BY "ENCORE"

9TH ANNUAL "SHARING THE GENETICS" ONLINE SALE APRIL 29, 2021

MIKE, CARRIE, JASON & KYLE CASKEY

1222 171ST ST. HOLLAND, MN 56139

PH: 507.347.3229 | CELL: 507.215.0266

MCCASKEY@WOODSTOCKTEL.NET | WWW.CASKEYPINELAWNFARMS.COM



PINE
LAWN
FARMS

Featuring Jacee Johnson



GIVE A BRIEF BACKGROUND ON YOUR EDUCATION INCLUDING HIGH SCHOOL AND COLLEGE ACTIVITIES OUTSIDE OF SHEEP

I attended Whitewater High school and graduated with the class of 2020. Throughout my four years of high school I was highly involved in FFA, Varsity Softball, Livestock Judging, National Honor Society, and 4H. I maintained High Honor Roll all four years of high school. I held many officer positions throughout my years of 4h including Secretary, Vice President, and President of my local 4h club. Besides showing sheep, I spent most of my free time playing competitively on a travel softball team. I now attend UW-Oshkosh, majoring in Biology with a Pre-Vet or Pre-Med track.

NUMBER OF HAMPSHIRE IN YOUR FLOCK:

My family and I run a flock of 200 Hampshires.

FAVORITE SHOW THAT YOU HAVE ATTENDED AND WHY?

The favorite show that I have attended would have to be the NAILE. Known as the Super Bowl of the livestock shows, the NAILE brings the best of the best livestock and people from across the country.

WHAT DO YOU LIKE ABOUT HAMPSHIRE?

I love the Hampshire breed. They make such great mothers and I love their fuzzy ears.

FONDEST SHEEP MEMORY:

My fondest sheep memory would have to be this year's NAILE. My sister and I won the 2020 Supreme Champion Ram in the Junior Breeding Show as well as class winners for our ewes. In the National Hampshire Show, our family was super fortunate to have won the Grand Champion Hampshire Ram, Reserve Grand Champion Ewe Overall, Grand Champion Junior Hampshire Ewe, Reserve Grand Champion Junior Hampshire Ewe, Reserve Grand Champion Senior Ewe, First Place Pair of Ewes and First Place Young Flock. My sister and I could not have accomplished that without all of our families help and support. It was truly a NAILE we will never ever forget! We are very thankful to have accomplished that as it was truly a memorable experience.

FUTURE PLANS AND GOALS:

Majoring in biology, I plan to continue with a pre-vet/pre-med track for my education. I also plan to maintain an active role in my families show lamb operations, promoting the livestock industry and maintaining a positive role model for the young kids.

ADVICE YOU'D GIVE JUNIOR HAMPSHIRE MEMBERS:

Don't take your time for granted. You only have so many years to show sheep so love it while you can! Enjoy the friends you make along the way. Enjoy the time you spend with your family. Life is short so appreciate all that you have.

FAVORITE FOOD? Sushi

FAVORITE ACTIVITY AWAY FROM SHEEP? Spending time with family and friends

WHAT IS YOUR ULTIMATE VACATION? My vacations have always been sheep shows, so maybe a tropical island.

FUN FACT ABOUT YOURSELF: I won Master Showman at my fair last year.

Featuring Sara Johnson

GIVE A BRIEF BACKGROUND ON YOUR EDUCATION INCLUDING HIGH SCHOOL AND COLLEGE ACTIVITIES OUTSIDE OF SHEEP

I have always been one to pride myself in being able to balance my academics and clubs/activities I am involved in. In high school, I was a part of the Spanish club, French club, FFA, and played on the Whitewater Varsity softball team all four years of my high school career. I was also on the High Honor Roll throughout the entirety of high school and was the Richmond 4-H President. I was ecstatic when I was accepted into my dream school, UW-Madison, as that was my goal coming into high school as a freshman. I am currently majoring in Animal Science and am an active member in the Association of Women in Agriculture and Saddle & Sirloin Club.



NUMBER OF HAMPSHIRE IN YOUR FLOCK:

My family and I run a flock of 200 Hampshires.

FAVORITE SHOW THAT YOU HAVE ATTENDED AND WHY?

Although this was a tough question, I would say my favorite show that I have attended is the Wisconsin State Fair. There are many reasons why I like our state fair, these include, but are not limited to, the competitiveness of the shows, being able to spend lots of time with my fellow livestock showing friends, and the Governor's Blue Ribbon Livestock Auction.

WHAT DO YOU LIKE ABOUT HAMPSHIRE?

The Hampshire breed has always been my favorite, as that is what my family raises and have showed for many years. I also just generally like how fast growing and heavy boned they are.

FONDEST SHEEP MEMORY:

My fondest sheep memory actually occurred at the most recent show I went to, NAILE, where my sister and I won Grand Champion Ram in the Hampshire show and Supreme Champion Ram in the Junior Breeding Sheep Show. It was so awesome to win those titles and make a dream that my dad has had since he started showing come true.

FUTURE PLANS AND GOALS:

Although I am not sure on a specific career I would like to do, I do plan on working in the agriculture industry. I also plan on raising my own livestock and doing my best to give back to the ag industry, as it has given me so much!

FAVORITE FOOD? Sushi

FAVORITE ACTIVITY AWAY FROM SHEEP? Being active within the Association of Women in Agriculture and spending time with my family.

WHAT IS YOUR ULTIMATE VACATION? A trip to Florida.

FUN FACT ABOUT YOURSELF: I love cats and dogs. Like, a lot...

Held's Hampshires

AURORA, SD 57002
JEFF | MARY | AUSTIN | AARON
CELL (JEFF): 605.690.7033

HELDHAMPSHIRE.COM | HELDHAMPS@GMAIL.COM



NIEMEIER 818

Our elite senior stud was the lead sire for our 2020 fall crop giving us more than 30 outstanding lambs! Give us a call later this winter or watch for postings on his exciting set of Hamps!!!



HELD 19-4035 NNPRR

By Niemeier 818 and the dam line is rich in our foundation genetics including the best pair of Held 2910 daughters, twin sisters 1097 and 1098.

Barnes Hampshires OH selected this attractive fall ram lamb privately this spring.

4035 sired a dozen fall 2020 lambs for us....they are really special!

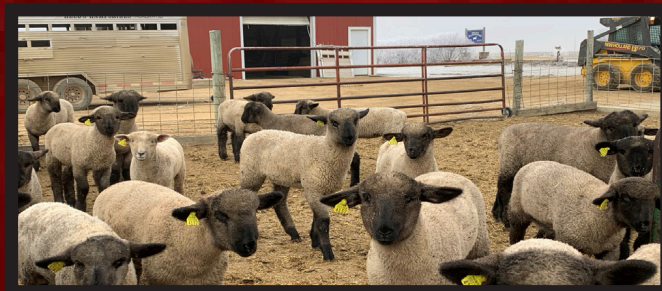
HELD 20-4119 NNPRR

Another fall born prospect by Niemeier 818. Going to be fun to peel the wool in March! (100 d old)



HELD 19-4042 NNPRR

Undefeated Fall Ram Lamb.
Sired by Niemeier 818.



Portion of our fall Lambs at weaning in early December.
Hampshires by Niemeier 818 or Held 19-4035.



HELD 19-4001 NNPRR

Undefeated Fall Ewe Lamb.
Sired by Niemeier 818.

Looking forward to getting back to the shows and sales in 2021!! Watch for our entries in the 2021 Heart of a Champion and AHSA online sales this spring; Midwest Stud Ram sale in June. Always welcome to stop at the farm or simply to share a conversation!!!!

Check our website for sheep available at Heldhampshires.com

American Hampshire Sheep Association

Application for Summer Internship

The below application is for individuals who are interested in applying to work as a summer intern for the American Hampshire Sheep Association. The approximate start date would be May 15th and approximate ending date would be August 1st. This is a paid internship and some travel might be required. Ideally, the successful applicant will work for 10-12 weeks and help with seasonal registry work and other duties of the AHSA office. Applications will be accepted until April 10th, 2021. Phone interviews will be conducted prior to April 20th and the job offer will be made soon thereafter. The job location is at the AHSA office in Wamego, Kansas. Application and current resume can be emailed to asregistry@gmail.com or mailed to AHSA, PO Box 231, Wamego, KS 66547. If you have questions call Jeff Ebert at 785-456-8500.

Name: _____ Phone: _____

Address: _____

Email Address: _____ Year in School: _____

Give a brief background on your agriculture experiences, including with sheep and then specifically with Hampshires?

Why do you want to work as a summer intern for the American Hampshire Sheep Association?

What experiences do you hope to gain by serving the AHSA as a summer intern?

Do you have any extra talents that would assist the AHSA office (For example, livestock photography or design and layout of brochures?)

Would you be available to travel to shows and sales if needed by the AHSA secretary?

Do you have any potential summer conflicts during June or July, 2021?

What could be your earliest start date and latest end date if you were offered this position?

Please use additional pages as necessary.

KJELDGAARD FARMS

OUR PASSION, SHEEP WITH SIZE AND STYLE

We had another great year at NAILE and would like to congratulate all the Hampshire exhibitors at this years' National show!



Jr. Champion Ewe Lamb
On our March Ewe Lamb
 Sired by 'Absolute'
 Her dam is 'Adel'
One of our winning yearling ewes in 2017

2nd Place Class I Yearling Ewe
Sired by Willwerth 26
 Dam is 'Adel'
She was our winning February ewe lamb last year.



2nd Place Class 2 Yearling Ewe
Sired by Willwerth 26
 Dam is a daughter by 'Big Baby' our National Champion Ram
She was our winning March ewe lamb last year.

2021 Lambs out of Kjeldgaard 19-03



We've won 1st Pair of Yearling Ewes three of the past four years!

****Plan to watch the Willwerth/Kjeldgaard online female sale April 18th**
 hosted by integritylivestocksales.com**

ALAN KJELDGAARD

Home: (402) 374-1175 Cell: (402) 870-0397
almay@speednet.com

ASI Elects New Leadership at Annual Convention

Following one of the most difficult years in the history of the American sheep industry, Susan Shultz of Ohio has been elected to lead the American Sheep Industry Association as its next president. Shultz was unanimously elected during the final day of the sheep industry's 156th Annual Convention on Jan. 29.

Shultz had served as vice president the past two years and as secretary/treasurer the two years prior to that. Also moving up the officer chain was Wyoming's Brad Boner, who was elected vice president after two years as secretary/treasurer. The two are joined by newly elected secretary/treasurer Ben Lehfeldt of Montana. Benny Cox of Texas moves into the past president position, replacing Mike Corn of New Mexico to round out the association's slate of officers for the next two years.

"I'm so proud to serve as ASI president," said Shultz. "It's such a special accomplishment for both Bill (her husband) and I because the sheep industry has always been such a special part of our lives. I welcome the opportunity to give back to an industry that has given so much to me all these years."

Shultz operates Bunker Hill Farm with Bill, and their son, Joe, in DeGraff, Ohio. The family raises Suffolks these days, but the farm traces back to the 1930s and has been home to Shropshires and Rambouillets in the past. As an active participant in the National Sheep Improvement Program and former chair of ASI's Let's Grow Committee, Shultz has shown a dedication to embracing technology (including the use of estimated breeding values) to continue to improve the American sheep industry. As a seedstock producer, Shultz and Bunker Hill Farm produce black-faced terminal sires for the heavy, lean lamb market. Terminal sires from the farm have been used all across the United States, including by a contingent of Western range operators.

"I think we've done a good job in recent years of really engaging all of the Executive Board members in guiding our industry. These men and women are such a wealth of knowledge of all aspects of the industry. We've also seen an increase in the number of producers in recent years - many of whom come to our industry without an extensive sheep or livestock background. So, there's a real need out there for education. We also need to lead our industry into opportunities to increase profits and provide for continued growth."

Boner is a past president of the Wyoming Wool Growers Association who previously served as the Region VII director to the ASI Executive Board. In that capacity he represented Idaho, Montana and Wyoming within the association. He left that position in 2019 when he was elected secretary/treasurer of ASI and now moves into the role of vice president.

A sheep and cattle producer in Glenrock, Wyo., Boner previously was chairman of the Mountain States Lamb Cooperative and has worked tirelessly for the sheep industry as a part of ASI's Wool Council, Lamb Council and Let's Grow Committee.

A fifth-generation sheep rancher from Montana, Lehfeldt's family has been involved in the sheep industry for 135 years. Lehfeldt has served on ASI's Wool Council and is a director for the Montana Wool Growers Association. In addition, he served on the American Lamb Board and has been the sheep industry representative to the National Grazing Lands Coalition.

Three current representatives to the ASI Executive Board were reelected by the regions they represent and were joined by two newly elected regional directors. Steve Clements of South Dakota (Region IV), Sarah Smith of Washington (Region VIII) and Bob Harlan of the National Lamb Feeders Association were reelected. They are joined on the ASI Executive Board by Lisa Weeks of Virginia (Region II) and Bronson Corn (Region VI), who were both elected by their regions to serve on the ASI Executive Board for the first time. Executive Board members Laurie Hubbard (Region I), Anne Crider (Region III), Tammy Fisher (Region V) and Randy Tunby (Region VII) continue to serve in those roles to fill out the executive board for 2021.

Look for complete coverage of the 2021 ASI Annual Convention in the March issue of the Sheep Industry News.

KJELDGAARD/WILLWERTH HAMPSHIRE FEMALE ONLINE SALE

APRIL 18TH

MANAGED BY
INTEGRITY LIVESTOCK
SALES



*JUNIOR CHAMPION FITTED EWE
NAILE 2020*

**SAME BLOODLINES
AS OUR 2020 JUNIOR
CHAMPION FITTED
EWE WILL SELL**

**YOUR PLACE FOR
BIG GENETICS
FOR
BIG RESULTS**

**Al
402.870.0397**

**Ron
515.570.2173**

North American International Livestock Exposition Junior Hampshire Show Results

Louisville, KY - November 14, 2020
Junior Show Judge: Aaron Crome, IL

-SLICK-SHORN DIVISION-

SENIOR RAM LAMBS

1- Joshua Wilson, NC		
Lazy 5 3287 AI	9/8/19	607584
2- Joshua Wilson, NC		
Lazy 5 3285	9/15/19	607583

JANUARY RAM LAMBS

1- Payton Harker, MO		
HFZ 188	1/4/20	607450
2- Campbell, Corbin & Clark Coyle, KY		
Terradise 2072 AI	1/11/20	607249
3- Sidney Mcallister, OH		
Rowe 2017	1/16/20	607491
4- Hayden Taylor, WI		
Taylor 20-154	1/10/20	607276
5- Emelia Roehm, OH		
Shroyer 10 Blue	1/15/20	607545
6- Alexis Hickman, IN		
Flanders VIP 0281 RRNFF BL	1/1/20	607061
7- Joshua Wilson, NC		
Lazy 5 3363 ET	1/17/20	607827
8- Norman, Logan & Jordan Tuholski, IN		
HSF 2012	1/24/20	607492
9- Steven Moran, TX		
NSLS 00044	1/20/20	607748
10- Joshua Wilson, NC		
Lazy 5 3369 ET	1/2/20	607589

FEBRUARY RAM LAMBS

1- Sara, Jacee & Justin Johnson, WI		
Johnson 1988	3/18/20	607484
2- Morgan & Madison Hauger, IN		
Hauger 20107 AI	3/4/20	607471
3- Andrew Slack, WI		
Slack 2051	3/2/20	607629
4- Adriana Wendland, MN		
NSLS 00130	3/9/20	607831
5- Alexis Hickman, IN		
Lazy 5 3359 ET	3/10/20	607585
6- Sydney Warren, KY		
Halligan 016	5/6/20	607765
7- Alivia, Ainsley & Braylon Porter, IL		
Storms 1090	2/15/20	607096
8- Joshua Wilson, NC		
Lazy 5 3362 ET	2/10/20	607587
9- Joshua Wilson, NC		
Lazy 5 3367 ET	2/10/20	607828
10- Madison Warren, KY		
Halligan 015	5/6/20	607764



CHAMPION SLICK-SHORN RAM

Sara, Jacee & Justin Johnson, WI
Johnson 1988 3/18/20 607484



RES. CHAMPION SLICK-SHORN RAM

Morgan & Madison Hauger, IN
Hauger 20107 AI 3/4/20 607471

YEARLING EWES - EARLY

1- Clark Coyle, KY		
Poe 19028 AI	12/5/18	80495D
2- Sidney Mcallister, OH		
Hull 9004 AI	1/20/19	81953D
3- Alexis Hickman, IN		
Flanders VIP 9152	1/20/19	79428D
4- Joshua Wilson, NC		
Lazy 5 3228 ET	1/1/19	81449D
5- Alexis Hickman, IN		
Flanders VIP 9140	1/2/19	79420D
6- Adriana Wendland, MN		
NSLS 18508	10/3/18	88149D
7- Ty Thorson, WI		
Rupnow 1904 AI	1/1/19	79912D
8- Katie Anderson, IN		
Carson 1904	1/5/19	88443D
9- Ty Thorson, WI		
Rupnow 1932	1/8/19	79942D
10- Tasha Schlueter, TX		
Lanier 9082	1/3/19	86259D
11- Ty Thorson, WI		
Metro 1921 AI	1/1/19	79920D
12- Steven Moran, TX		
NSLS 19058	1/22/19	88151D

YEARLING EWES - LATE

1- Alexis Hickman, IN		
Flanders VIP 9058	2/20/19	79461D
2- Skilar Burch, TN		
Friesen 1917	2/3/19	80267D
3- Campbell, Corbin & Clark Coyle, KY		
Terradise 9093	2/18/19	84650D
4- Sallie & Samantha Everhart, IN		
Hauger 19111	3/4/19	81729D
5- Berkley Williams, IN		
Carson 1907	2/27/19	81785D
6- Adriana Wendland, MN		
NSLS 9010 AI	2/1/19	83070D
7- Sara, Jacee & Justin Johnson, WI		
Johnson 2016	2/20/19	80950D
8- Mason Johnson, OH		
Carson 1952	3/7/19	80405D
9- Nathan Garrett Boone, TX		
Nelssen 19311	2/5/19	80147D
10- Joshua Wilson, NC		
Lazy 5 3241 ET	3/1/19	81450D
11- Steven Moran, TX		
NSLS 19205 ET	3/14/19	88152D
12- Katie Anderson, IN		
Carson 1953	3/27/19	83819D
13- Tasha Schlueter, TX		
Lanier 9183	3/16/19	86258D

SENIOR EWE LAMBS

1- Campbell, Corbin & Clark Coyle, KY		
Terradise 2010	12/15/19	85969D
2- Megan Kelly, IN		
Kelly 1960	11/5/19	88012D
3- Emily Nave, TN		
Heritage Hollow 1956	9/8/19	85177D
4- Joshua Pluimer, IN		
Pluimer 2002	12/17/19	97959D
5- Alexis Hickman, IN		
Flanders VIP 9230 QRNN PUN	9/20/19	86564D
6- Joshua Wilson, NC		
Lazy 5 3289 AI	9/8/19	87306D
7- Tim Riemer, WI		
Ridgeview 2001	12/26/19	87076D
8- Emelia Roehm, OH		
Poe 0004-20	10/17/19	86073D

SENIOR CHAMPION EWE

Clark Coyle, KY
Poe 19028 AI 12/5/18 80495D

RESERVE SENIOR CHAMPION EWE

Sidney Mcallister, OH
Hull 9004 AI 1/20/19 81953D

EARLY JANUARY EWE LAMBS

1- Ty Thorson, WI		
Metro 2008 AI	1/1/20	85590D
2- Jackson, Cole & Brynn Ritter, IN		
Wheaton A2037 QRNNFF	1/1/20	86158D

3- Jackson, Cole & Brynn Ritter, IN Wheaton A2066 TT ET RRNF 1/6/19	86159D
4- Emily Akey, MO Lazy 5 3323 ET	1/5/20 87051D
5- Mason Smith, AL Johnson 2863	1/5/20 87952D
6- Briar Buckland 2002 Buckland 2002	1/6/20 87433D
7- Morgan Garrison, IN Kidd 0362	1/2/20 86313D
8- Bristol Buckland, IN Buckland 2001	1/6/20 87432D
9- Madison Braun, FL TN ESC-0010	1/6/20 87477D
10- Joshua Wilson, NC Lazy 5 3330 ET	1/2/20 87313D
11- Alexis Hickman, IN Flanders VIP 0283 RRNF BE AI	1/5/20 85795D
12- Harley Weathers, AL M&M 0763	1/2/20 87927D
13- Avery Feltner, IN Feltner 2040 AI	1/5/20 86665D
14- Harlee & Brady Dunaway, IN Hauger 20006	1/3/20 86801D
15- Hannah Deno, IN Deno Farms 20006	1/1/20 84741D
16- Emelia Roehm, OH Poe 0022-20	1/4/20 86074D
17- Seth Ariens, IN Einhaus 2025	1/2/20 85891D
18- Eloise Roehm, OH Poe 0067-20	1/6/20 86075D

INTERMEDIATE JANUARY EWE LAMBS

1- Garrett Nathan Boone, TX Hobbs 20027 AI	1/15/20 86171D
2- Campbell, Corbin & Clark Coyle, KY Terradise 2009	1/15/20 85968D
3- Ariana Spina, OH Dendlinger WD 1070	1/16/20 87534D
4- Riley Mcghee, IN Smith 1772	1/10/20 85690D
5- Emily Stevens, OH Westlake 2015	1/10/20 86118D
6- Mckenna Burke, FL TN ESC-0012	1/11/20 87476D
7- Addison Campbell, OH Dendinger WD 1071	1/16/20 87535D
8- Joshua Wilson, NC Lazy 5 3317 AI	1/16/20 87310D
9- Clayton Brillhart, KS Brillhart 20106	1/10/20 87961D
10- Kylie Cox, IN Spitznagle 2041	1/13/20 87629D
11- Kasen Robinson, KS Robinson 2035	1/10/20 84834D
12- Sarah Riemer, WI Ridgeview 2003	1/9/20 87074D
13- Sydney Geberin, OH Shroyer 632 Pink	1/15/20 87213D
14- Emily Nave, TN Friesen 2041	1/10/20 88170D
15- Mattie Horchler, PA MSB 0062	1/14/20 84513D
16- Tasha Schlueter, TX Lanier 2007	1/7/20 86261D

17- Allison Fink, KY Double F 20-2374	1/8/20 88046D
18- Braden Buckland, IN JFSS 0178	1/16/20 84807D

LATE JANUARY EWE LAMBS

1- Emily Taylor, OH Westlake 1074	1/18/20 87116D
2- Linsey Eddy, OH Westlake 2020	1/21/20 86108D
3- Morgan & Madison Hauger, IN Hauger 20032	1/20/20 86941D
4- Emma Mitchell, IN Slack 0417H	1/22/20 84874D
5- Sallie & Samantha Evergart, IN Hauger 20063	1/23/20 86321D
6- Alexis Hickman, IN Flanders VIP 0266 BE X	1/22/20 85227D
7- Madalyn Crouch, IN Madjack P1891	1/20/20 85883D
8- Hayden Taylor, WI U of WI 20-013	1/18/20 87565D
9- Emily Akey, MO Lazy 5 3319 AI	1/21/20 87050D
10- Jessica Stroup, FL Kisacky 2001	1/18/20 87023D
11- Ty Thorson, WI Rupnow 2026	1/17/20 85596D
12- Alivia, Ainsley & Braylon, IL Storms 865	1/18/20 85415D
13- Norman, Logan & Jordan Tuholski, IN HSF 2013	1/24/20 86875D
14- Olive Budreau, IN JFSS 0105	1/25/20 86141D
15- Mackenzie & Carson Cunningham, KS Warrior 2004	1/28/20 86871D
16- Kirsten Cummings, IN Rule 20052	1/20/20 86916D

EARLY FEBRUARY EWE LAMBS

1- Greeley Eastep, IN Rule 20074	2/5/20 88072D
2- Morgan & Madison Hauger, IN Wheaton A2125 ET QRNF 2/1/20	86166D
3- Campbell, Corbin & Clark Coyle, KY Terradise 2024	2/2/20 85976D
4- Linsey Eddy, OH Westlake 2010	2/3/20 86110D
5- Aria Neier, IN Deno Farms 20060	2/1/20 86363D
6- Katie Anderson, IN Carson 2007	2/4/20 87063D
7- Sallie & Samantha Everhart, IN Hauger 20046	2/3/20 86320D
8- Camden & Landrey Krieger, IN JFSS 0122	2/7/20 86146D
9- Grady Callahan, FL ESC TNESC0013	2/11/20 86017D
10- Brxton Young, KS Young 0002	2/1/20 85519D
11- Haley Puckett, IN Michel 2007	2/5/20 86559D
12- Stella Gibson, VA FCL 2007	2/4/20 86243D
13- Harlee & Brady Dunaway, IN Hoody 052	2/7/20 86910D

14- Jordyn Weldon, IA JFSS 205	2/3/20 86980D
15- Mackenzie Smith, AL Smith-2004	2/4/20 87527D
16- Steven Moran, TX NSLS 00100	2/2/20 87969D
17- Hayden Taylor, WI Taylor 20-171	2/4/20 87956D
18- Haley Merhoff, OK Christian 2018	2/2/20 86184D

INTERMEDIATE FEBRUARY EWE LAMBS

1- Sara, Jacee & Justin Johnson, WI Johnson 2122	2/12/20 86839D
2- Sydney Warren, KY Halligan 013	2/15/20 88025D
3- Emily Stevens, OH Westlake 2030	2/13/20 86113D
4- Megan Zeitler, WI Corner View 20338	2/15/20 85785D
5- Samuel Baynes, IN Mattingly 2133	2/12/20 86932D
6- Sidney Mcallister, OH Shroyer 2006 Yellow	2/15/20 87089D
7- Joshua Wilson, NC Lazy 5 3300 ET	2/10/20 87308D
8- Kashen & Brecken Nelson, KS Hobbs 20109 AI	2/10/20 86170D
9- Alexis Hickman, IN Flanders VIP 0265 BE AI	2/10/20 85793D
10- Alexis Koch, IN Madjack 1892	2/10/20 87628D
11- Gabe Wyatt, IL Beeler Farms 2008	2/11/20 84564D
12- Linsey Eddy, OH Westlake 2025	2/11/20 86112D
13- Madeline Baynes, IN Mattingly 2135	2/12/20 86933D
14- Kenzie Brown, TX Richards 2051	2/10/20 86136D
15- Sydney Geberin, OH Shroyer 635 Pink	2/15/20 87214D
16- Jacob Thompson, IN Silver Dollar LC 2018 AI	2/9/20 88410D
17- Kenzie Brown, TX Richards 2050	2/10/20 86135D
18- Kashen & Brecken Nelson, KS Rule 20022	2/15/20 85702D
19- Edward Maddox, FL Hobbs 20149 AI	2/15/20 87964D

LATE FEBRUARY EWE LAMBS

1- Sara, Jacee & Justin Johnson, WI Johnson 1935	2/28/20 86844D
2- Ellee Bills, IN Slack 00397	2/24/20 88172D
3- Ty Thorson, WI Metro 2037	2/22/20 85602D
4- Mason Smith, AL Ellerbrock 6639 AI	2/18/20 87505D
5- Maeci Marshall, IN Slack 0241	2/21/20 88174D
6- Nathan Garret Boone, TX JFSS 0159	2/20/20 84718D
7- Alexis Hickman, IN Flanders VIP 0296 BL	2/18/20 85233D

8- Joshua Wilson, NC			
Lazy 5 3304 ET	2/19/20	88411D	
9- Camden Yake & Landrey Krieger, IN			
JFSS 0150	2/25/20	86147D	
10- Alivia, Ainsley & Braylon Porter, IL			
Storms 1101	2/25/20	85420D	
11- Lucas Wilson, IN			
Brown 391	2/16/20	86262D	
12- Lucas Wilson, IN			
Brown 403	2/16/20	86263D	
13- Linsey Eddy			
Westlake 0900	2/20/19	81564D	
14- Austin & Tyler Wright, IN			
Smith 1846	2/20/20	85699D	
15- Erin Israel, FL			
Izzy 0051	2/17/20	85766D	
16- Emily Akey, MO			
Lazy 5 3298 ET	2/16/20	87049D	
17- Jordyn Weldon, IA			
JFSS 0293	2/28/20	86996D	
18- Edward Maddox, FL			
Plank 0064	2/25/20	87684D	
19- Braden Buckland, IN			
JFSS 0245	2/16/20	84808D	

EARLY MARCH EWE LAMBS

1- Ty Thorson, WI			
Metro 2047	3/3/20	85605D	
2- Josie Baynes, IN			
Mattingly 2122	3/2/20	86930D	
3- Campbell, Corbin & Clark Coyle, KY			
Terradise 2025	3/2/20	85977D	
4- Sophie Young, OH			
OH3162-0122	3/5/20	87166D	
5- Carter Bills, IN			
Slack 05114	3/4/20	88173D	
6- Jordyn Leininger, IN			
Slack 9472 ST AI	3/7/20	86918D	
7- Paul Riemer, WI			
Wheaton A2-132 RRNNFF	3/3/20	87392D	
8- Katie Anderson, IN			
Carson 2028	3/5/20	87068D	
9- Payton Harker, MO			
HFZ 237	3/4/20	87878D	
10- Barrett Sitton, OK			
Charmasson 20024	3/2/20	87269D	
11- Linsey Eddy, OH			
Westlake 2019	3/2/20	88291D	
12- Alivia, Ainsley & Braylon Porter, IL			
Storms 1100	3/1/20	85423D	
13- Joshua Wilson, NC			
Lazy 5 3347 ET	3/10/20	87318D	
14- Ty Thorson, WI			
Metro 2046	3/2/20	85604D	
15- Alexis Hickman, IN			
Flanders VIP 0329	3/10/20	85241D	
16- Maeci Marshall, IN			
Slack 0506	3/7/20	88175D	
17- Landrey & Lynnly Krieger, IN			
JFSS 0026	3/5/20	84730D	
18- Emily Stevens, OH			
Westlake 2007	3/1/20	86116D	
19- Tyler Getzlaff, FL			
Sacred Silence FL57649-1997	3/1/20	88074D	
20- Allison Fink, KY			
Double F 20-2416	3/10/20	88057D	

21- Logan Roach, IL			
JFSS 0022	3/10/20	84719D	

INTERMEDIATE MARCH EWE LAMBS

1- Ariah Neier, IN			
Deno Farms 20081	4/1/20	88017D	
2- Megan Kelly, IN			
Kelly 2044	3/25/20	86697D	
3- Sara, Jacee & Justin Johnson, WI			
Johnson 2197	4/5/20	86885D	
4- Callen Oldenburg, OK			
Oldenburg 201040	3/15/20	86196D	
5- Camden Yake & Landrey Krieger			
JFSS 0153	3/17/20	84810D	
6- Adriana Wendland, MN			
NSLS 00178	4/1/20	87439D	
7- Klayten Chamberlin, OH			
Wagner 0152	3/20/20	87333D	
8- Picket Fence Club Lambs, NE			
JFSS 0308	3/13/20	87002D	
9- Joshua Wilson, NC			
Lazy 5 3342 ET	3/20/20	87317D	
10- Emily Akey, MO			
Lazy 5 3351	3/20/20	87052D	
11- Mason Smith, AL			
Smith-2001	3/12/20	87525D	
12- Kelcie Couch, OH			
Wagner 0160	3/20/20	87334D	
13- Alivia, Ainsley & Braylon Porter, IL			
Storms 1112	3/21/20	88434D	
14- Addison Winger, IN			
JFSS 0346	4/2/20	87013D	
15- Caleb Smith, FL			
Sacred Silence FL57649-1936	3/10/20	88075D	
16- Harlee & Brady Dunaway, IN			
Hoody 058	3/11/20	86912D	
17- Steven Moran, TX			
NSLS 00188	3/13/20	87971D	

JUNIOR CHAMPION EWE

Garrett Nathan Boone, TX			
Hobbs 20027 AI	1/15/20	86171D	

RESERVE JUNIOR CHAMPION EWE

Greeley Eastep, IN			
Rule 20074	2/5/20	88072D	



CHAMPION SLICK-SHORN EWE

Clark Coyle, KY			
Poe 19028 AI	12/5/18	80495D	



RES. CHAMPION SLICK-SHORN EWE

Garrett Nathan Boone, TX			
Hobbs 20027 AI	1/15/20	86171D	

-FITTED DIVISION-

JANUARY RAM LAMBS

1- Mitch Bobendrier, MN			
Bobendrier Boys 20-10 RR	1/20/20	607640	
2- Lucas Banks, OH			
Bayliss 2086 RR	1/13/20	606911	
3- William Taylor, KY			
Taylor Stock 007	1/13/20	606968	

FEBRUARY RAM LAMBS

1- Beau Mumm, IL			
Mumm 2003 QR	2/3/20	607166	



CHAMPION FITTED RAM

Mitch Bobendrier, MN			
Bobendrier Boys 20-10 RR	1/20/20	607640	



RES. CHAMPION FITTED RAM

Lucas Banks, OH			
Bayliss 2086 RR	1/13/20	606911	

EARLY YEARLING EWES

1- Mitch Bobendrier, MN			
Bobendrier Boys 19-58 RR	3/1/19	83599D	
2- Mitch Bobendrier, MN			
Bobendrier Boys 19-22 RR	1/10/19	81026D	

- 3- Grace Powell, TN
Bobendrier 18-178 NNP RR 9/7/18 79980D
- 4- Lainey, Ansley & Hadley Mendenhall, IN
Hickman 1435 RR 1/3/19 79362D
- 5- Blainey Woods, KS
Sanford M908 RR 1/12/19 80029D
- 6- Blainey Woods, KS
Willwerth White 88 2/25/19 84624D

SENIOR CHAMPION EWE

Mitch Bobendrier, MN
Bobendrier Boys 19-58 RR 3/1/19 83599D

RESERVE SENIOR CHAMPION EWE

Mitch Bobendrier, MN
Bobendrier Boys 19-22 RR 1/10/19 81026D

JANUARY EWE LAMBS

- 1- Blainey, Woods, KS
Caskey A008 RR 1/19/20 86352D
- 2- Beau Mumm, IL
Schiefelbein 2003 RR 1/3/20 85008D
- 3- Kenzie Meyer, IL
Caskey A012 RR 1/20/20 86350D
- 4- Mitch Bobendrier, MN
Bobendrier Boys 20-04 RR 1/7/20 85713D
- 5- William Taylor, KY
Taylor Stock 002 1/1/20 84982D
- 6- Lainey, Ansley & Hadley Mendenhall, IN
Larson L & L 20-007 1/27/20 86284D

FEBRUARY EWE LAMBS

- 1- William Taylor, KY
Taylor Stock 056 2/10/20 84969D
- 2- Kenzie Meyer, IL
Meyer 2032 2/20/20 86792D
- 3- Mitch Bobendrier, MN
Bobendrier Boys 20-31 RR 2/9/20 85725D
- 4- Lainey, Ansley & Hadley Mendenhall, IN
Pullin 10-20 2/15/20 85765D

MARCH EWE LAMBS

- 1- William Taylor, KY
Taylor Stock 080 3/3/20 84971D
- 2- Beau Mumm, IL
Mumm 2050 RR 3/2/20 85570D
- 3- Blainey Woods, KS
Newland 500 3/18/20 86904D

JUNIOR CHAMPION EWE

Blainey, Woods, KS
Caskey A008 RR 1/19/20 86352D

RESERVE JUNIOR CHAMPION EWE

William Taylor, KY
Taylor Stock 056 2/10/20 84969D



CHAMPION FITTED EWE

Blainey, Woods, KS
Caskey A008 RR 1/19/20 86352D



RES. CHAMPION FITTED EWE

Mitch Bobendrier, MN
Bobendrier Boys 19-58 RR 3/1/19 83599D

**-JUNIOR SUPREME DRIVE-
CHAMPION RAM**



Sara, Jacee & Justin Johnson, WI
Johnson 1988 3/18/20 607484

**-MARKET LAMB DIVISION-
HAMPSHIRE**

CLASS 5

- 1- Grace Moore - Sonora, TX
- 2- Reygan Conlee - Keene, CA
- 3- Kendal Rosen - Urbana, IN
- 4- Mackenzie Castro - Napoleonville, LA
- 5- Tanner Schaeffer - Beach City, TX
- 6- Bryce Fisher - Killeen, TX
- 7- Abby Law - Stratford, TX
- 8- Kaitlynn Chevarie - Nolanville, TX
- 9- Hayes Henderson - Kilmichael, MS
- 10- Zane Walker - Eastland, TX

CLASS 6

- 1- Jillian Keller - Piqua, KS
- 2- Colt Randall - Canute, OK

- 3- Cache Wrye - Estancia, NM
- 4- Addison Harlow - Prairie Grove, AR
- 5- David Vetter - Bennett, CO
- 6- Graham Newsom - Olton, TX
- 7- Oliver Dies - Ames, IA
- 8- Chloe Clem - Tahoka, TX
- 9- Wesley Berget - Mineral Point, WI
- 10- Ty Jones - Scottsville, KY

CLASS 7

- 1- Madison Rule - Hawarden, IA
- 2- Trace Titus - Alexis, IL
- 3- David Robles - San Antonio, TX
- 4- Bailee Amstutz - Richwood, OH
- 5- David Vetter - Bennett, CO
- 6- Cole Cooper - Elmwood, NE
- 7- Morgan Evans - Richwood, OH
- 8- Lauren Frink - Eaton, CO
- 9- Rose Davies - Filer, ID
- 10- Zane Walker - Eastland, TX

CLASS 8

- 1- Sayde Allen - Elk City, OK
- 2- Riley Hoyle - Taylor, AR
- 3- Madison Woods - Gustine, CA
- 4- Abbey Currie - Conroe, TX
- 5- Cole Ellerbrock - Atkinson, IL
- 6- Kendal Rosen - Urbana, IN
- 7- Jayde Perea - Estancia, NM
- 8- Shane Smith - Bakersfield, CA
- 9- Kaden Nelson - New Richland, MN
- 10- Colton June - Wahoo, NE

CLASS 9

- 1- Hudson Franklin - Shallowater, TX
- 2- Logan Jackson - Olden, TX
- 3- Brantlee Cox - Glencoe, OK
- 4- Brody Scroggins - Moore, OK
- 5- Brayden Bowers - Belmont, WI
- 6- Bailee Amstutz - Richwood, OH
- 7- Paige Pence - New Carlisle, OH
- 8- Bailee Hylton - Sinks Grove, WV
- 9- Gabrielle Raute - Carmel, IN
- 10- Addilyn Bryant - Ashland, OH

CLASS 10

- 1- Colby Williams - Mabel, MN
- 2- Hadley Hendrickson - Farmland, IN
- 3- Weston Stevens - Chillicothe, OH
- 4- Brady Meudt - Whitewater, WI
- 5- Brantlee Cox - Glencoe, OK
- 6- Kennedy Mitchell - Waveland, IN
- 7- Hailey Albrecht - Oroville, CA
- 8- Bailee Hylton - Sinks Grove, WV
- 9- Nash Stoller - Gridley, IL
- 10- Haley Van Nurden - Sunburg, MN

CLASS 11

- 1- Katherine Olson - Cheyenne, WY
- 2- Gabrielle Raute - Carmel, IN
- 3- Bryce Clayton - Winchster, IL
- 4- Braden McCoy - Franklin, WV
- 5- Audrey Galindo - Calipatria, CA
- 6- Lauren Frink - Eaton, CO
- 7- Grace Arthur - Ellendale, MN
- 8- Madison Haynes - Auburn, IN
- 9- Allison Van Nurden - Sunburg, MN
- 10- Adara Bell - Avilla, IN



**4TH OVERALL MARKET LAMB
CHAMPION HAMPSHIRE**
Hudson Franklin - Shallowater, TX



RES CHAMPION HAMPSHIRE
Sayde Allen - Elk City, OK

NEW SENIOR MEMBERS

October 1, 2020 – January 31, 2021

ARIZONA

FIRE FIGHTER FARM (TODD MCCLARIN)

CALIFORNIA

LAMAR AND MELANIE FOWLE-NELSON

ILLINOIS

**A&M RANCH (MARK & AMY JOHNSON)
ALEIGHA & COY RUDISILL**

INDIANA

**JUSTIN WILLOUGHBY
KPOE HAMPSHIRE (KALEN POE)
KELLY M PARRAMORE**

MARYLAND

BELLE PRAIRIE FARM, LLC (BAKER ELKHARROUBI)

MINNESOTA

LINNEA KNOWLES

NEW JERSEY

DANIEL WUNDERLICH

OHIO

KRISTEN JOHNSON

OKLAHOMA

4D CLUB LAMBS (AMBER DIETRICK)

PENNSYLVANIA

KATIE PAINTER

TEXAS

**KRISTIN MEREDITH
EASTON JAY**

WYOMING

FREEMAN LIVESTOCK, LLC

NELSON *Hampshires*

YEARLING EWES



YEARLING RAMS

We are looking forward to the sales this summer!

We have a strong group in both yearling rams and yearling ewes.

Congratulations to Niemeier Family Hamps for their 1st place pair of Ewe lambs in Louisville 2020, they are out of a ewe the family purchased from us in Sedalia 2019.

Rodney & Kathy Nelson

13329 WCR 74 Eaton, CO 80615

R: 970-481-9837 | K: 970-481-0861 | Nelsheep1@what-wire.com

State Hampshire Associations

OHIO HAMPSHIRE SHEEP ASSOCIATION OFFICERS

President: Frank Sexten
3420 State Route 380
Xenia, Ohio 45385-9735
Phone: 937-371-1392
Email: fsexten@gmail.com

Secretary/Treasurer: Marla Shell
1901 Doak Road
Midland, Ohio 45148
Phone: 614-496-8575
Email: mdshell319@hotmail.com

Vice-President: Denise Deal
9818 Navarre Rd SW
Navarre, Ohio 44662
Phone: 330-879-5327
Email: ddeal1974@aol.com

Board of Directors:
Denise Deal
Jim Brandt

This information was provided by state Hampshire associations. We encourage all of our state Hampshire associations to submit information on their activities for each issue of the Hampshire Heartbeat.

ILLINOIS HAMPSHIRE SHEEP ASSOCIATION OFFICERS

President: Megan Mumm
49 CR 1300 N
White Heath, IL 61884
Phone: 217-377-2073
Email: meganmumm@hotmail.com

Secretary/Treasurer: Bill Chapin
5680 E Reed Rd
Coal City, IL 60416
Phone: 815-954-5129
Email: chapinhamps@gmail.com



Directors:
Chris Cahoon
Luke Benjamin
Chris Meyer
Charlotte Toohill

NEW ENGLAND HAMPSHIRE SHEEP ASSOCIATION OFFICERS

President: Kyle Thayer
Vice President: Darlene Leary
Treasurer: Tina Fisk Colt
Secretary: Sue Searle

MINNESOTA HAMPSHIRE SHEEP ASSOCIATION OFFICERS

President: Rod Scheller
3646 County Rd 37
Monticello, MN 56362
Email: rodscheller@gmail.com

Vice-President: Bruce Bakken
29557 State Hwy 13
Hartland, MN 56042
Email: bjbakken54@gmail.com

Secretary/Treasurer: Art Frame
16465 Paul Ave.
Worthington, MN 56187
Email: aframe@nobleswildblue.com

Director: Mark Christensen
1561 250th Ave.
Tyler, MN 56178
Email: mcchris@frontiernet.net

Director: Gary T. Klug
Box 383
Harlan, IA 515372
Email: klughihamp@tm.net

Director: Reid Merrill
2163 250 St
Canby, MN 56220
Email: rvmerrill50@gmail.com

Director: Todd Schmidt
21407 775th Ave
Albert Lea, MN 56007
Email: rschmidt76@gmail.com

Director: Tom Bobendrier
1351 US Hwy 75
Pipestone, MN 56164
Email: shebob@svtv.com

SOUTH DAKOTA HAMPSHIRE SHEEP ASSOCIATION OFFICERS

President: Ty Fuller
17713 435th Ave.
Clark, SD 57225
605-520-4403
fuller2in@hotmail.com

Vice President: Jeff Slack
29141 SD Hwy 19
Viborg, SD 57070
605-360-4904

Secretary: Kristin Marshall
45491 204th ST
Arlington, SD 57212
Phone: 605-770-0132
Email: marshallke83@outlook.com

INDIANA HAMPSHIRE SHEEP ASSOCIATION OFFICERS

President: Dan Myers
833 E CR 350 S
Logansport, Indiana 46947
Phone: 574-355-6840
Email: indianahamps@gmail.com

Secretary/Treasurer: Kris Myers
833 E CR 350 S
Logansport, Indiana 46947
Phone: 574-355-6840
Email: indianahamps@gmail.com

PENNSYLVANIA HAMPSHIRE SHEEP ASSOCIATION OFFICERS

President/Secretary: Mindy Holtry
717-776-4192

The main focus of the PHSA is to support junior Hampshire exhibitors at the Keystone International.

MISSOURI HAMPSHIRE SHEEP ASSOCIATION OFFICERS

President: Leland Browning
54 SE Co. Rd. 16335
Appleton City, MO 64724
checkridge@embargmail.com
660-924-1090

Vice President: Larry Hand
12918 Maness Road
Desoto, MO 63020
lwband5@att.net
314-303-1141

Secretary: Julie Gatson
31310 Bluejay Rd.
Vandalla, MO 63382
gatsonfarms@gmail.com
573-594-3247

Treasurer: Kay Hayter
459 E. 550th Rd 65770
raykay70-72@hotmail.com
417-830-0263

Hampshire Lifetime Membership

The American Hampshire Sheep Association board of directors recently passed an AHSA lifetime membership process. The fee would be based on the number of years you have been a senior member of the AHSA.

- Individual applying in their first through ninth year as a member of the American Hampshire Sheep Association the lifetime membership fee would be \$500.00.
 - Individuals who have been an AHSA member between 10-14 years the lifetime membership fee would be \$400.00.
 - Individuals who have been an AHSA member between 15-19 years the lifetime membership fee would be \$350.00.
 - Individuals who have been an AHSA member 20 or more years the lifetime membership fee would be \$200.00.
- All lifetime members will receive a pin designating their lifetime membership status. Lifetime members would be listed in Hampshire magazine.
- Lifetime memberships are not transferable.

WESTLAKE 2019



WESTLAKE 2022



WESTLAKE 2040



Congratulations TO ALL OUR BUYERS AND *Thank You* FOR YOUR CONTINUED SUPPORT OF OUR PROGRAM!



RES CHAMPION HAMPSHIRE EWE
YOUTH SHEEP EXPO

WESTLAKE 2002



Mapes

CONGRATULATIONS
CORI LEE ON YOUR
GRAND CHAMPION WETHER

Dan Westlake

17183 MACKAN RD,
MARYSVILLE, OH 43040
(937) 243 - 5111

DWESTLAKE3233@ICLOUD.COM

FACEBOOK: DAN WESTLAKE CLUB LAMBS

WESTLAKE 2030



WESTLAKE 2035



WESTLAKE 2010



RESERVE CHAMPION
HAMPSHIRE RAM
NAILE 2020

WESTLAKE 900



THIS WAS MY YEARLING RAM THAT I WAS TAKING TO THE 2020 MIDWEST STUD RAM SALE "THOUGHT HE COULD MAKE SOME NOISE". THANKS TO EBERT SHEEP FARM FOR THEIR PURCHASE!

WESTLAKE 2028



CONGRATULATIONS
LUCAS BANKS ON YOUR
GRAND CHAMPION MARKET LAMB

2021 AHSA Futurity Rules

Sponsored by the American Hampshire Sheep Association

Point Scoring:

- A point records form must be filled out for each show and forwarded to the American Hampshire Sheep Association office by November 1, 2021. The form must be signed by the superintendent of the show who must also verify the youth owning the lamb did physically show the animal unless physically impaired. If physically impaired, the junior member must still be present at the show even if they are unable to show their sheep in the show ring.
- At each individual show the ewe may earn futurity points from both the open division show and/or the junior division show only if the shows are held at different times and judged by different judges. Only the junior show placing from the North American International Livestock Exposition will be counted. Futurity ewes can only be shown in breeding class. The ewe lamb and yearling ewe cannot be shown in market classes.
- Futurity yearling ewes and ewe lambs may be shown at an unlimited number of shows and submit points from the shows shown in. Only the top 5-point forms submitted can be used toward the futurity final point totals.
- No designated show will be held before May 1st.
- Futurity awards will be announced during the annual meeting of the American Hampshire Sheep Association. Premiums will be mailed to the winners from the AHSA office after December 1st. Winners will also be posted on the AHSA website.
- Attached is the futurity point sliding scale from which points will be determined: (see information attached)
- There will be separate divisions for slick shorn and fitted ewe lambs. There will also be separate divisions for bred and owned slick shorn and fitted ewe lambs. An individual sheep can only participate in one division.
- **New in 2021 is a yearling ewe futurity program. There will be a fitted and slick shorn division in 2021. Until we see how successful the program is, the purchased and bred and owned ewes will compete in their respective slick shorn and fitted category.**

Premiums for Purchased Division and Yearling Ewe Division:

A minimum of (\$2,000) will be awarded in premium in both the fitted and slick shorn divisions. The guaranteed money totals will be given as follows:

1 st - \$400 (20%)	6 th - \$175 (8.75%)
2 nd - \$300 (15%)	7 th - \$150 (7.5%)
3 rd - \$250 (12.5%)	8 th - \$15 (6.25%)
4 th - \$225 (11.25%)	9 th - \$100 (5%)
5 th - \$200 (10%)	10 th - \$75 (3.75%)

Premiums for Bred & Owned Division:

1 st - \$300 (30%)
2 nd - \$250 (25%)
3 rd - \$200 (20%)
4 th - \$150 (15%)
5 th - \$100 (10%)

In case of a tie, each animal that is part of the tie will receive the same amount.

Exhibitor Rules:

- Rules of exhibition shall be those published in respective premium books of each show. Ownership deadlines might vary from state to state. All ewe lambs and yearling ewes must be nominated by Sept 1st.
- All juniors who meet the requirements for the Junior Show at the North American Livestock Exhibition are eligible to participate in the Futurity Ewe Lamb and Yearling Ewe program. Rules for the NAILE are:
 - Not to be more than 21 years of age the date of the show in November, no lower age limit but junior member must be physically capable of showing his/her own sheep.
 - Junior member must be present to show their own sheep unless physically impaired. If the junior member is physically impaired, the junior member must still be present at the show that the futurity ewe lamb or yearling ewe is being shown at and earning points from even if they are unable to show their own lamb in the show ring.
 - Animals purchased must be transferred through the AHSA office. The date of sale will reflect when the animal was purchased and must be prior to September 1st. No ewe lamb or yearling ewe will be able to earn futurity points prior to being sold and transferred to the junior member or registered in the bred and owned division.
 - Current year paid membership in the American Hampshire Sheep Association is required. Membership must be paid prior to September 1st.
- Juniors are responsible to be knowledgeable of and abide by these rules.
- All ewe lambs and yearling ewes must be purchased and transferred directly to the youth and must be recorded in the AHSA office by the sale management or with a completed 2020 AHSA Futurity Nomination form. For the bred and owned division, the ewe lamb and yearling ewes must be bred by the immediate family or by the junior member. Immediate family is defined as grandparents, parents and siblings of the junior exhibitor. These ewe lambs and yearling ewes can remain in multiple juniors' names but only one junior can submit point forms on each individual animal. If the lamb is transferred out of the youth's name it will NO LONGER be eligible. No partnerships, farm, family, 4-H club or FFA chapter names will be accepted. Also, the purchaser cannot be a family member or family member of an employee of the breeder of the lamb.
- Ownership of ewe lambs and yearling ewes or points earned in the futurity are not transferrable to any other person other than the original owner, nor are the points transferable from one animal to another.
- No futurity entrant may receive premiums for more than two ewe lambs. Total points earned by two animals cannot be combined to one animal.

Consignor Rules:

- Entries are limited to yearling ewes and fall and spring born ewe lambs.
- Nomination fee is \$25 per ewe lamb or yearling ewe and payable to the AHSA. Fee will be paid to the AHSA office by the breeder of the animal or the junior member who nominated their own animal and must be submitted at the time of the transfer or registration of the lamb. **Breeder nomination fee of the entire 2021 lamb crop can be done by paying a one-time \$200 nomination fee.**
- Each yearling ewe or ewe lamb must conform and abide by the rules and regulations of the individual sale (see below)
 - Yearling Ewes or ewe lambs sold in an online or production or by private treaty can be nominated for the 2021 AHSA futurity program by completing and submitting the 2021

AHSA futurity nomination form along with the nomination fee. Transfers must be completed within three weeks of the sale date.

-Yearling ewes and ewe lambs nominated at public auction managed by Heartland Group, Banner Sale Mgt, or any other recognized sale management, will be recorded by the sale management at the time of the show and designated with an F brand prior to the sale.

- Junior members may re-nominate yearling ewes that were futurity nominated in 2020 by submitting the AHSA futurity nomination form and paying the \$25 nomination fee.

- The AHSA will not be held responsible for any dispute and or disagreements between buyers and sellers.
- Animals will be permanently identified for futurity purposes and recorded by their individual scrapie tag number and/or flock tag number.

CHAPIN HAMPS

**Bill & Carole, Derek, Laura,
Clive & Quincy**

Coal City, IL 60416

(815) 954-5129 chapinhamps@gmail.com



"Cali"

**7th Place Early Fitted Yearling Ewe
NAILE 2020**



"Gunner"

**3rd Place Fitted Yearling Ram
NAILE 2020**

**Barn is filled with January Ram and Ewe Lambs!
Big, Pretty and Plentiful
Best Lamb Crop We Have Ever Had
Most Sired by "Hades" out new Person Ram**



"Brittany"

**2nd Place Fitted Fall Ewe Lamb
NAILE 2020**

**Sound, Honest, Complete & Consistent
Hampshire Sheep**



Size, Thickness, Bone & Beauty

**"Easy Keepers" that will work in any flock –
ESPECIALLY YOURS!**

AHSA Futurity Program

What is it?

A point system for youth to participate in and receive monetary prizes from the American Hampshire Sheep Association

- Potentially \$10,000 is awarded in 2021 for 6 divisions
- Divisions: Fitted Raised, Fitted Purchased, Slick Shorn Raised, Slick Shorn Purchased, Slick Shorn Yearling Ewe & Fitted Yearling Ewe
- Animals can only be entered in one division
- Animals nominated for futurity may receive points at any show, including both open and junior divisions
- You can turn in as many point forms as you want but the top 5 highest points will be used to calculate your final total
- A point sheet must be filled out for every show and be turned in by Nov 1 of the current year.
- Point forms can be found on www.hampshires.org

The program provides incentive to youth to show their sheep, as well as, recognition to producers for raising high quality animals.

How do I nominate a ewe lamb or yearling ewe for futurity?

- \$25 entry fee per animal OR \$200 one-time fee to nominate the whole lamb crop
- Must fill out nomination form found at www.hampshires.org
- Animals can be nominated through online sales, private treaty, and any public auction managed by Heartland Group, Banner Sale Mgmt., or any other recognized sale management

Who can participate in the AHSA Futurity?

- Any junior who is under 21 years of age and has paid the current year's membership dues
- The nominated animals must be in the junior's name as of Sept 1 of the current year
- Only one junior can submit points forms for a specific sheep
- One junior can have multiple animals in the futurity; however, the junior will only receive premiums for two animals

How the Points are Scored:

Placing in Class

# in Class	1	2	3	4	5	6	7	8	9	10	11	12	13	14	15	16	17	18	19	20	21	22	23	24	25	26
1 to 5	5	4	3	2	1																					
6 to 10	10	9	8	7	6	5	4	3	2	1																
11 to 15	15	14	13	12	11	10	9	8	7	6	5	4	3	2	1											
16 to 20	20	19	18	17	16	15	14	13	12	11	10	9	8	7	6	5	4	3	2	1						
21 to 25	25	24	23	22	21	20	19	18	17	16	15	14	13	12	11	10	9	8	7	6	5	4	3	2	1	
26+	30	29	28	27	26	25	24	23	22	21	20	19	18	17	16	15	14	13	12	11	10	9	8	7	6	5

Questions??

-Call Jeff Ebert, AHSA Executive Secretary at (785) 456-8500 or email asregistry@gmail.com

Plan to join the Futurity Fun in 2021!

2021 Hampshire Futurity Point Record Form

I, (exhibitor name) _____ have shown the Hampshire ewe lamb or
yearling ewe (Breeder, flock tag #) _____, (scrapie tag #) _____
(AHSA Reg #) _____. The ewe lamb or yearling ewe, which placed _____ in a class of
(total head #) _____ (provide class name: Fall, Jan etc.) _____, was shown in the
(open or junior) _____ division of the following livestock show: (show name along with city,
state) _____ on this date _____.

This ewe lamb or yearling ewe is competing in the _____ fitted division or _____ slick shorn division.

This placing is verified by the superintendent of the above listed below.

Show Superintendent Printed Name: _____

Show Superintendent Signature: _____

Superintendent Contact Phone Number for Verification of Placing: _____

Please verify that the youth owning the lamb did physically show the lamb unless physically impaired. If physically impaired, please verify that the youth owning the lamb was present at the show.

Youth signature (owner of lamb) _____ Member # _____

*Please make sure all blanks are completed when mailed to the AHSA office or the form will be invalid.
Forms are required to be postmarked and mailed or faxed to the AHSA office by November 1, 2021.*

American Hampshire Sheep Association
PO Box 231, 420A Lincoln St.
Wamego, KS 66547
Fax: 758.456.8599

AMERICAN JUNIOR HAMPSHIRE SHEEP ASSOCIATION BOARD



President
Morgan Hauger
Coonersville, TN



Vice President
Campbell Coyle
Danville, KY



Secretary/Treasurer
Grace Powell
Watertown, TN



Maci Atchison
Stilwell, OK



Lane Brooks
Russellville, TN



Skilar Burch
Christiana, TN



Erin Halleran
Waterloo, IL



Connley Hoagland
Glendive, MT



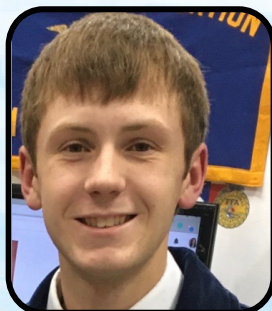
Danielle Houghtaling
Doland, SD



Amanda King
Petaluma, CA



Haleigh O'Brien
Saint Paul, KS



Taylor O'Brien
Saint Paul, KS



Jenna Sullivan
Moodus, CT



Ty Thorson
Columbus, WI

INDEX TO HEARTBEAT ADVERTISERS

A		H		P	
ALF HAMPHIRES	8	HELD'S HAMPSHIRE	38	PETERSON SHEEP CO.	10
B		HIGHLAND HAMPSHIRE	12	PINE LAWN FARMS	35
BOBENDRIER BOYS	INSIDE	J		PULLIN'S HAMPSHIRE	16
BOBENDRIER HAMPSHIRE	FRONT COVER	JASON JOHNSON SHOW	23	PURINA	27
C		LAMBS		R	
CHAPIN HAMPS	54	K		RIKOW HAMPS	INSIDE BACK COVER
D		KJELDGAARD FARMS	40	S	
DAN WESTLAKE CLUB	50-51	KJELDGAARD/WILLWERTH	41	SD STATE UNIVERSITY	9
LAMBS		KLEINERT HAMPSHIRE	30	SELECT LIVESTOCK	25
F		N		SERVICES	
FLATLAND HAMPSHIRE	22	NELSON HAMPSHIRE	47	T	
SHEEP & BOER GOATS		NIEMEIER HAMPSHIRE	14	TERRADISE FARM	BACK COVER

American Sheep Producers Collect \$156 million from CFAP

As of Feb. 15, the U.S. Department of Agriculture has paid out more than \$156 million to the American sheep industry through the Coronavirus Food Assistance Program.

The American Sheep Industry Association paved the way for lambs, sheep and wool to be included in the government assistance package by demonstrating a \$125-million loss at the ranch gate level as a result of the COVID-19 pandemic and the subsequent effect it had on shutting down the United States economy.

Lamb sales to the foodservice sector were the hardest hit by the pandemic as high-end restaurants, hotels and cruise lines shut down virtually overnight in March 2020. Typically, more than 50 percent of all American lamb products were marketed to those industries. The loss of sales played a role in the bankruptcy of Mountain States Rosen – the second-largest lamb processor in the United States – and created additional issues for America's sheep producers as they struggled to get their lambs harvested in 2020.

Total CFAP payments to the American sheep industry look like this:

\$49,958,624 for lambs less than 2 years of age;

\$15,133,875 for sheep more than 2 years of age;

\$2,669,294 for non-graded wool;

\$1,592,257 for graded wool.

The first round of CFAP payments totaled \$69,354,049 to the American sheep industry, while producers have claimed even more of the available funds in the second round of CFAP payments, to the tune of \$87,132,765, for a total of \$156,486,815.



RES. SR CHAMPION RAM AT LOUISVILLE

He is sired by "Rapid Fire" that is now at stud for Vivian's of Illinois and out of the Peterson ewe who has a fall stud buck on her this fall. We wish Caskey's the best with lambs out of this buck they call "BIG."

***WATCH OUT FOR OUR ONLINE SALE
TO BE HELD ON APRIL 25TH!***

***WE WILL HAVE A GOOD SELECTION OF
RAMS FOR SALE OFF THE FARM.***

VISITORS WELCOME ANYTIME!



Richard Krackow

Arcadia, WI | rkdrealt@triwest.net | PH: 608-343-2899

Terradise Farm - Rockin' Louisville



**2020 NAILE Grand Champion Hampshire Ewe Junior and Open
Yaaassss Queen — Poe 19028 — Sired by Bushwacker**

Our Final Touch Daughter's Rockin' The Green Shavings!!!



**Senior Ewe Lamb
1st in Jr. and Open**



**Late Jan. Ewe Lamb
2nd in Jr. & 1st in Open**



**Early March Ewe Lamb
2nd in Jr. & Open**



**Early Feb. Ewe Lamb
3rd in Jr. & 2nd in Open**



1st Flock Open & 1st Junior Flock Jr. Show



Final Touch

**Poe 7151 –Full Monty Son
Semen, Yearlings,
And Lambs Available**

**Let him ROCK your
2021 Show Season**

Terradise Farm - The Coyles - Danville, KY - (859) 516-4522