

HAMPSHIRE

Spring 2019

Heartbeat



LOOKING FORWARD TO ANOTHER

sensational **SUMMER**

WE HAVE AN IMPRESSIVE GROUP OF SPRING LAMBS
Sired BY OUR DIVERSE STUD RAM BATTERY!

LARGE SELECTION OF
Breeding Stock

always available private treaty
off the farm at prices to
accommodate anyone's budget



SIMILAR BREEDING TO OUR LOUISVILLE WINNERS LAST FALL!

Two of these yearling ewes will be in our Sedalia consignment!
We will also be consigning a top fall ewe lamb, two fancy January ewe
lambs, and two outstanding January stud prospects!

BE ON THE LOOKOUT FOR:

Sale Offerings & Our Show String
this spring and summer at summer fairs and shows

THANK YOU TO ALL THE BIDDERS AND BUYERS IN THE SPRING ONLINE SALES:

Spoonster Hamps, Missouri; Duane Grimme, Ohio; Haley Christensen, Minnesota
Brady Carter, Minnesota; David Pinckney, New York; Adel Ragheb, Minnesota

BOBENDRIER HAMPSHIRE

1607 90th Ave.

Pipestone, MN 56164

jcobendrier@gmail.com

507.825.4072

SOLUTIONS
for
Success

BOBENDRIER BOYS

1351 Highway 75

Pipestone, MN 56164

shebob8@gmail.com

507.215.0334

Watch our website, bobendrierhampshires.com for photos and videos of upcoming sale consignments!

CONTENTS

- 4** **CALENDAR OF EVENTS**
A list of upcoming Hampshire events.
- 5** **PRESIDENT'S MESSAGE**
Updates from Scott VanSickle.
- 6** **FEATURING MARY & AL
KJELDGAARD**
A feature on Kjeldgaard family.
- 7** **EASTERN REGIONAL
HAMPSHIRE SALE**
Results from the sale in Ohio.
- 9** **SHEEP SCENES**
Photos from some moments this past year.
- 10** **NEW SENIOR MEMBERS**
A list of the new members in the last year.
- 13-15** **EWE LAMB FUTURITY RULES**
List of rules for 2019 AHSA Ewe Lamb Futurity
- 16** **HAMPSHIRE HISTORY**
A look back at Hampshires in 1980.
- 19** **NATIONAL HAMPSHIRE SALE**
Information on the National Hampshire Sale.
- 20** **HAMP RAM & EWE
ONLINE SALE RESULTS**
Results from the ASHA Hamp Ram & Ewe Sale.
- 23** **MIDWEST JUNIOR PREVIEW SHOW**
Results from the show in Missouri.
- 27** **HERITAGE HONORS APPLICATION**
Application for the Hampshire Honors Recognition.
- 28-29** **YOUTH CONNECTION**
How to keep lambs healthy over the summer.
- 30-31** **JUNIOR FEATURE: LANE BROOKS**
A feature on Lane Brooks.
- 31** **AHSA OFFICE STAFF**
An update on the staff in the AHSA office.
- 31-33** **2019 SCHOLARSHIP PROGRAM**
Application for the 2019 Scholarship Program.
- 35-37** **AJHS AMBASSADOR PROGRAM**
Application for Juniors Ambassador Program.
- 38** **JUNIOR FEATURE: HAYDEN TAYLOR**
A feature on Hayden Taylor.
- 39** **NORTHEAST YOUTH SHEEP SHOW**
Information for the July show.
- 40-41** **STATE HAMPSHIRE ASSOCIATIONS**
Contact information for state associations.
- 42-57** **2019 MEMBERSHIP DIRECTORY**
Contact information for all AHSA members.

Calendar of Events

JUNE

24-29 National Hampshire Sale - Sedalia, MO

JULY

1 AHSA Scholarship Application due

3-7 All American Junior Show - Hutchinson, KS

19-21 Northeast Youth Sheep Show -

West Springfield, MA

27 NSIP Sale - Spencer, IA

AUGUST

NSIP Sale - Wooster, OH

SEPTEMBER

9 Deadline for Director Bios

15 Deadline for Fall Hampshire Heartbeat

30 Deadline for AJHSA Ambassador Applications

OCTOBER

25 Hampshire Heritage Award Application due

NOVEMBER

1 Deadline for Futurity Point Forms

16 Hampshire Wether Show - Louisville, KY

16 National Junior Hampshire Show - Louisville, KY

17 130th Annual Meeting of the AHSA - Louisville, KY

18 National Hampshire Show - Louisville, KY

Official Publication of the American Hampshire Sheep Association

420A Lincoln

P.O. Box 231

Wamego, Kansas 66547

Ph: 785-456-8500 Fax: 785-456-8599

asregistry@gmail.com • www.hampshires.org

EXECUTIVE SECRETARY: Jeff Ebert

OFFICE MANAGER: MARY SHORT

STAFF: AMBER THOMPSON, JANETTE FUND, JOELLE SYLVESTER, JENNIFER WENDEROTT, &

MEGAN MYERSCOUGH

AHSA Board of Directors

President: Scott VanSickle

Vice President: Brent Larson

DISTRICT 1 - Dina King

(707) 322-3469 - dinamking@hotmail.com

1st term expires in 2021

DISTRICT 2 - Jason Simpson, CO

(970) 371-0276 - jsimponcl@aol.com

2nd term expires 2020

DISTRICT 3 - Randy Pirtle, OK

(918) 440-4553 - randy.pirtle@okstate.edu

3rd term expires 2019

DISTRICT 4 - Brent Larson, SD

(605) 633-1561 - larsonb76@gmail.com

2nd term expires 2019

DISTRICT 5 - Ted Van Horn

(620) 285-9486 - ted.vanhorn@ks.usda.gov

1st term expires in 2021

DISTRICT 6 - Debbie Deal, OH -

(330) 607-1347 - ddeal1957@aol.com

3rd term expires 2020

DISTRICT 7 - Tom Bobendrier, MN

(507) 215-0334 - shebob@svtv.com

3rd term expires in 2021

DISTRICT 8 - Katelyn Parsons

(413) 387-2726 - katelyn@mfbf.net

1st term expires 2019

AT-LARGE - Tom Bobendrier, MN

(507) 215-0334 - shebob@svtv.com

3rd term expires in 2021

AT-LARGE - Derick Miller, TX

(806) 239-3670 - millerpecanfarms@gmail.com

2nd term expires 2019

AT-LARGE - Jason Mumm, IL

(217) 377-2073 - meganmumm@hotmail.com

1st term expires 2020

Office Fee Schedule

A. MEMBERSHIPS

1. New Senior Membership	_____	\$25
2. Annual Senior Dues	_____	\$25
3. New Junior Membership	_____	\$15
4. Junior Dues	_____	\$15

B. REGISTRATIONS

Postmarked Sept 1 - April 30		
1. Animals under 12 months	_____	\$4
2. Animals over 12 months	_____	\$8
Postmarked May 1 - August 31		
1. Animals under 12 months	_____	\$6
2. Animals over 12 months	_____	\$12

C. TRANSFERS

1. Under 90 Days (from date of sale)	_____	\$10
2. Over 90 Days (from date of sale)	_____	\$20

D. DUPLICATE CERTIFICATE _____ \$5

E. RUSH FEE (PER TRANSACTION) _____ \$5

IF YOU WOULD LIKE TO HAVE YOUR SHOW OR SALE LISTED IN OUR CALENDAR OF EVENTS AND ON THE HAMPSHIRE WEBSITE, PLEASE EMAIL US THE INFORMATION. FOR SALES TO BE LISTED YOU MUST BE SELLING REGISTERED HAMPSHIRE SHEEP.

Greetings from your President

Hampshire Breeders and Members,

My updated report will follow immediately after I give some highlights from the Report of the Commissioner of Patents for the year 1850. One of the areas of focus was sheep husbandry as reported by Henry S. Randall. The author begins discussing wool consumption of the time: an ordinary laboring Northern farmer consumes in dress, bedding, etc about 18-20 pounds of wool, boys of 16 half as much and females not to exceed much beyond one-quarter of the consumption of males. A laborer in Southern States requires 8-10 pounds of wool annually for his health and comfort. The author continues by giving current population of the U.S. and average consumption by extrapolating that by 1963 America would need in excess of 1 billion pounds of wool produced annually to keep up with demand. He continued on that the average wool production in 1850 was three pounds per head and that we would need over 364 million head of sheep to keep up with demand. It's hard for us to predicate the future, in this case the influence of cotton and synthetics on the textile industry.

Our industry is continually changing as well and one of the biggest changes is that of the auction industry. Who would have imaged a mere twenty years ago that a significant number of sheep would trade hands through internet auctions. This segment has become an important part of industry, but what changes in the future will alter the way many sheep trade hands? It is hard to say what will the next step be. I still hear many folks give accolades to the old fashion, on site, in person auctions that continue to hang on and we have our national sale coming up and the Midwest Stud Rams Sale in Sedalia. This is a good way not just to examine some of the best sheep in the nation, but to visit with those with a common passion of raising sheep. We will have another youth show this year.

In other auction news, we had two very successful AHSA internet auctions this spring and in talking with Jeff, he said that the Hampshire at the Big Ohio Sale were strong and that they had a good sale was well.

We have had a few staffing changes at the office. Jeff has hired a new office manager, Mary Short. The board also agreed last year that we should hire a Director of Member Services. This person in this position will help improve our visibility on social platforms, help with the magazine, serve the association at shows and sales, as well as several other office duties to support the executive secretary directly. After a lengthy search, Amber Thompson has been hired.

Be looking in your inbox, mailbox or at several events this year, for a survey dealing with several topics. The Board is working on this as we speak and hope to have it ready to distribute at Sedalia. Please take the time to respond so that we may continue to grow and improve our association.

Many updates come from our Executive Secretary, Jeff Ebert, in the form an email titled Hampshire Happenings. Please take time to peruse this as it covers many current issues and updates, including shows, sales and important office information. One such update the bears repeating is that of scam emails. I have had the honor of having my name used without permission, by unknown parties, without a doubt of having unscrupulous intentions. Please double check the email address and do not click any links! Be vary wary of such emails and if you every have any question, please call the office to verify first.

Best of luck this show and sale season and I hope to see you at Sedalia.

Scott VanSickle

ADVERTISING IN THE HEARTBEAT

****Printed three times a year****

WINTER ♦ SPRING ♦ FALL

You can choose to run an individual ad in a single issue of your choice, or choose a three-issue contract. Contract ads will be placed in three consecutive issues of the Hampshire Heartbeat. Contracts begin with the next available issue and run through the next two consecutive issues. Either an individual ad or a contract can be purchased at any time throughout the year. Prices for both types are listed below or advertises who provide ads ready for publication will receive a 15% discount on the listed prices. You may find more information at www.hampshires.org.

DEADLINES

Winter Issue: January 15th

Spring Issue: May 1st

Fall Issue: September 15th

Ad size or Placement	Single Issue Price	Three Issue Contract Price
Inside Covers	\$450.....	\$900
2-Page Spread.....	\$550.....	\$1100
Full Page	\$350.....	\$700
3/4 Page	\$300.....	\$600
2/3 Page	\$275.....	\$550
1/2 Page	\$250.....	\$500
1/3 Page	\$210.....	\$420
1/4 Page	\$165.....	\$330
1/6 Page	\$125.....	\$250
1/8 Page	\$100.....	\$200

Featuring Mary and Al Kjeldgaard

Introduce yourself & your family

Mary and I are the owners of Kjeldgaard Farms and Kjeldgaard Ag Services, Our 3 kids are Holly (Bob), Tye (Kendra), Kya, Shea, Eva and Koy. Erin (Brent) Wyatt, Quinn and Sloane. Whenever the kids and grandkids get home they still like to help with the sheep chores. We have 5 grandkids that are showing sheep and goats now. My Grandfather and dad ran commercial ewes plus ran a feedlot, which brought lambs in from the west and fed them out. Our farming operation is a corn, bean and alfalfa operation.

Give us a brief description of your Hampshire Flock

We run around 15 registered Hampshires. They are all frame type, we lamb in February thru April. We enjoy showing at the Iowa state fair and Louisville.

Why did you choose to include registered Hampshires in your sheep operation?

As I already had a flock of suffolks I wanted a different breed for the kids, we always like Hamps so we decided that was going to be there project.

What advice do you have for people starting out in the sheep business?

Pick out the type of Hamps you like. Find a couple breeders that have good Hamps of that type and stay connected with them, concentrate your bloodlines, don't jump from breeder to breeder chasing the purple. Buy the best females you can find. They will be the backbone of your program.

What are one or two items that you have found to be critical for the success of your sheep operation?

The females critical in our operation, they need to be sound and functional. Cull hard at lambing time, that's when your upset with a ewe, time to mark her for market to eliminate more problems in your breeding program.

Who are some people that you credit for your success with Hampshires?

First would be my grandfather, he was a great livestock man. One other was Bob Johnson from Boys Town, He was head of the Dairy and sheep operations, he was so far ahead in his thinking back in the 60's as to how you needed to make your females look like to be productive. Of course you have to think of the Hogg, Hubbards for what they did for the industry. In todays world, Ron Willwerth and I do a lot of visiting about the Hamps.

What is your favorite sports team?

Of course, THE CORN HUSKERS

What is your favorite food?

Look at me, did I miss any meals? I'd say great hamburgers are hard to beat.

What is the top item on your bucket list?

To see all the grandkids get through college and be successful

What is the favorite place you have visited?

New Zealand and Alaska



Eastern Regional Hampshire Sale

Eaton, OH

May 9-11, 2019



**Champion Wether Sire
Slentz Farms, IN**



**Champion Ram
Northern Starr Livestock, MN**



**Champion Ewe
Marshall Sheep Co, SD**



**Reserve Champion Ram
Plaza Livestock, MO**



**Reserve Champion Ewe
Golden Lane Farms, MN**



**Champion Wether Dam
Daniels Club Lambs, IN**



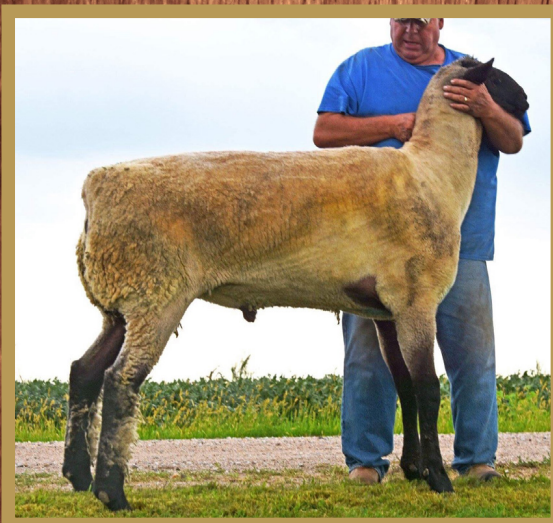
**Reserve Champion Wether Dam
VIP, IN**

KJELDGAARD FARMS

"Our passion, sheep with style and size."

Is this the year you're going to make an **IMPACT** on your Breeding Program?
YOU GET ONE CHANCE A YEAR, MAKE IT THIS YEAR.

WILLWERTH 26RR



A YEARLING SON OF WILLWORTH 157RR

**MOST OF OUR
LAMBS ARE Sired
BY THESE 2 RAMS**

KJELDGAARD 18-953RR



**2ND PLACE FEB RAM LAMB AT LOUISVILLE
A SON OF WILLWERTH 157RR**

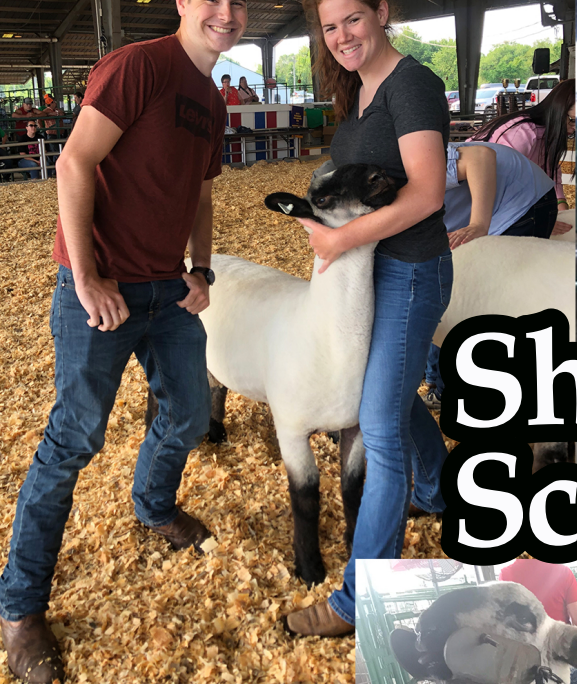
KJELDGAARD 18-975RR



**1ST PLACE MARCH RAM AT LOUISVILLE
HE'S HEADED TO SEDALIA | HE'S AN IMPACT TYPE OF RAM**

Al and Mary Kjeldgaard | 4400 Co. Rd. IJ | Tekamah, NE 68061

almary@speednet.com | 402.870.0397



Sheep Scenes



New Senior Members

ARKANSAS

BRITTANY TORMEY

DELAWARE

ROBYN HUNTER

ILLINOIS

TULLY ACRES- VICTORIA MOHR

INDIANA

RILEY, ELAINA & ALEX SMITH

JON & JONI POUNDS & FAMILY

JASON WALKER

ROSS SPITZNAGLE

KANSAS

REESE & COOPER MENG

AUDRINA, FAITH, ZACHARY &

REID MARCY

NEBRASKA

DETHLEFS SISTERS SHOW STOCK

NEW YORK

ETHAN KENNEDY

OHIO

BUCKEYE FARMS

**FROM FEBRUARY 1, 2019 TO
APRIL 30, 2019**

OKLAHOMA

VANDELL LIVESTOCK

F4 CLUB LAMBS- MIKE FREELAND

JENNIFER HAMLIN

PENNSYLVANIA

ANITA & BRIAN WENTZ

LEE & SHIRLEY BEDILLION

ROSE SMITH

TEXAS

JAMES TAYLOR

VILLARREAL HAMPSHIRE- ERNESTO

VILLARREAL

UTAH

JIM JENSEN

JOSEPH OLSEN

CARL & DIANE BOTT

WASHINGTON

**PAINTED K HAMPSHIRE-
HEARTHER KLINE**

WISCONSIN

SETH LOUDENBECK

EMILY PETZEL



SOUTH DAKOTA STATE UNIVERSITY

"Performance driven Hampshires with style!"



Wheaton 8-126

Atlas X Wheaton 5-119 (Public Enemy)

We are really impressed with the lambs that
this new ram is producing.

We are offering select offspring for sale.

**SDSU 8500 | SDSU 4227 X SDSU
7125 (Wheaton 6-189)**

Congratulations
to the Paul Family on
purchasing this high
selling ram in our sale.



Thank you to all of our buyers in
our May 1st Hampshire Sale!

We have additional Rams available
for purchase off the farm.



**SDSU 9011 | Wheaton 8-126
X SDSU 6160**

Thank you to the Baumann Family for
the purchase of this high selling ewe
in our sale.

Visitors Welcome Anytime!

FOR MORE INFORMATION:

Karolynn Marsan - UNIT MANAGER - CELL 208-661-4587

Jeff Held - SUPERVISOR - CELL 605-690-7033

NSIP EBV'S AVAILABLE FOR ALL LAMBS.

BE SURE TO FOLLOW US ON FACEBOOK

FOR FLOCK UPDATES AND PHOTOS

Held's Hampshires

AURORA, SD 57002

JEFF | MARY | AUSTIN | AARON

CELL (JEFF): 605.690.7033

HELDHAMPSHIRE.COM | HELDHAMPS@GMAIL.COM



Held18-2082NNP RR

Adel Ragheb added our fall triplet ewe lamb from the AHSA online sale in early May. Thanks to Adel for making this selection to help build the genetic base for his Minnesota flock.

Watch for the triplet sister, Held 18-2083 in our pens at the Midwest Sale!!



Held18-2075NNP RR

Tom Foster, MN added this beautiful fall ewe lamb to their upcoming show string from the 2019 "Heart of a Champion" online sale.

Held19-2112NNP RR

Triple Z Hampshires purchased this awesome January ram lamb privately this spring. He is sired by Held 15-1742 and the dam goes back to Caskey 16.....alot of 16 in his look! Expecting Wyatt and Blake will have fun showing him before the stud goes to work this fall!



Held19-2133NNP RR

A Midwest Sale entry that has All American show written all over her design....has all the tools with soundness, level hip plus great bone and wool! She and another 10 ewe lambs like her were born in late-January and early February. Expect updated pics to appear on our website for consignment to the Midwest Sale.



Niemeier 818

New Stud Ram added to the Held's Hampshire flock this spring!

We have been searching for several years to add an outcross into our program with exceptional structure, bone, wool and hip levelness. These are traits that lead selection decisions in our flock.

Thank you to Ed and Keith Niemeier for the opportunity to bring this outstanding individual to South Dakota!

Held18-2080NNP RR

Spoonster Hampshires added this eye popping fall ram to the stud pen. He gets better by the day, has Held 14-1547, our 2015 National Champion Ram on both sides of the pedigree and loaded with stud ewes across the generations. As the spring arrived it became clear this stud resembles 1547...all the tools to make an impact!

Lot's of excitement created with this fall ram lamb!



Thankyou to breeders that bid on our consignments in online sales this spring! Especially pleased to have many visitors stop at the farm to see our sheep too. We were able to place a number of top quality rams and females sold privately, best of luck in the summer show season.

Thankfully in 2019 we have a great selection of top quality ewe lambs available, subsequently we will consign 3 or 4 spring ewe lambs to the Midwest Sale. Check out our website for consignment updates...heldhamps@gmail.com



Double F
CLUBLAMBS

Sedalia Spotlight

SAMPLE OF 2019 MIDWEST STUD RAM SALE
CONSIGNMENTS



SHOOT YEAH
buck lamb



FAKE NEWS
ewe lamb



FAKE NEWS
yearling ewe



SHOOT YEAH
ewe lamb

ENDRE, BETSY, STEFAN, AND ALLISON FINK
1760 BOONESBORO RD, WINCHESTER, KY 40391
STEFAN: 859-771-8441 ENDRE: 859-559-7765
DOUBLEFLAMB@GMAIL.COM
WWW.DOUBLEFLAMBS.COM

**2019 AHSA Ewe Lamb Futurity Rules
& Point Record Form**
Sponsored by the American Hampshire Sheep Association

Point Scoring:

- A point records form must be filled out for each show and forwarded to the American Hampshire Sheep Association office by November 1, 2019. The form must be signed by the superintendent of the show who must also verify the youth owning the lamb did physically show the lamb unless physically impaired. If physically impaired, the junior member must still be present at the show even if they are unable to show their sheep in the show ring.
- At each individual show the ewe lamb may earn futurity points from both the open division show and/or the junior division show only if the shows are held at different times and judged by different judges. Only the junior show placing from the North American International Livestock Exposition will be counted. Futurity ewe lambs can only be shown in breeding class. The ewe lamb cannot be shown in market classes.
- Futurity ewe lambs may be shown at an unlimited number of shows and submit points from the shows shown in. Only the top 5-point forms submitted can be used toward the futurity final point totals.
- No designated show will be held before May 15th.
- Futurity awards will be announced during the annual meeting of the American Hampshire Sheep Association. Premiums will be mailed to the winners from the AHSA office after December 1st. Winners will also be posted on the AHSA website.
- Attached is the futurity point sliding scale from which points will be determined: (see information attached)
- There will be separate divisions for slick shorn and fitted ewe lambs. There will also be separate divisions for bred and owned slick shorn and fitted ewe lambs. An individual sheep can only participate in one division.

Premiums for Purchased Division:

A minimum of (\$2,000) will be awarded in premium in both the fitted and slick shorn divisions. The guaranteed money totals will be given as follows:

1 st - \$400 (20%)	6 th - \$175 (8.75%)
2 nd - \$300 (15%)	7 th - \$150 (7.5%)
3 rd - \$250 (12.5%)	8 th - \$15 (6.25%)
4 th - \$225 (11.25%)	9 th - \$100 (5%)
5 th - \$200 (10%)	10 th - \$75 (3.75%)

Premiums for Bred & Owned Division:

1 st - \$300 (30%)
2 nd - \$250 (25%)
3 rd - \$200 (20%)
4 th - \$150 (15%)
5 th - \$100 (10%)

In case of a tie, each animal that is part of the tie will receive the same amount.

Exhibitor Rules:

- Rules of exhibition shall be those published in respective premium books of each show. Ownership deadlines might vary from state to state. All ewe lambs must be nominated by Sept 1st.

- All juniors who meet the requirements for the Junior Show at the North American Livestock Exhibition are eligible to participate in the Futurity Ewe Lamb program. Rules for the NAILE are:
 - Not to be more than 21 years of age the date of the show in November, no lower age limit but junior member must be physically capable of showing his/her own sheep.
 - Junior member must be present to show their own sheep unless physically impaired. If the junior member is physically impaired, the junior member must still be present at the show that the futurity ewe lamb is being shown at and earning points from even if they are unable to show their own lamb in the show ring.
 - Animals purchased must be transferred through the AHSA office. The date of sale will reflect when the animal was purchased and must be prior to September 1st. No ewe lamb will be able to earn futurity points prior to being sold and transferred to the junior member or registered in the bred and owned division.
 - Current year paid membership in the American Hampshire Sheep Association is required. Membership must be paid prior to September 1st.
- Juniors are responsible to be knowledgeable of and abide by these rules.
- All lambs must be purchased and transferred directly to the youth and must be recorded in the AHSA office by the sale management or with a completed 2019 AHSA Ewe Lamb Futurity Nomination form. For the bred and owned division, the lamb must be bred by the immediate family or by the junior member. Immediate family is defined as grandparents, parents and siblings of the junior exhibitor. These lambs can remain in multiple juniors' names but only one junior can submit point forms on each individual lamb. If the lamb is transferred out of the youth's name it will NO LONGER be eligible. No partnerships, farm, family, 4-H club or FFA chapter names will be accepted. Also, the purchaser cannot be a family member or family member of an employee of the breeder of the lamb.
- Ownership of ewe lambs or points earned in the futurity are not transferrable to any other person other than the original owner, nor are the points transferable from one lamb to another.
- No futurity entrant may receive premiums for more than two ewe lambs. Total points earned by two ewe lambs cannot be combined to one lamb.

Consignor Rules:

- Entries are limited to fall and spring born ewe lambs.
- Nomination fee is \$25 per ewe lamb and payable to the AHSA. Fee will be paid to the AHSA office by the breeder of the lamb or the junior member who nominated their own lamb and must be submitted at the time of the transfer or registration of the lamb. **Breeder nomination fee of the entire 2019 lamb crop can be done by paying a one-time \$200 nomination fee.**
- Each ewe lamb must conform and abide by the rules and regulations of the individual sale (see below)
 - Ewe lambs sold in an online or production or by private treaty can be nominated for the 2019 AHSA ewe lamb futurity program by completing and submitting the 2019 AHSA ewe lamb futurity nomination form along with the nomination fee. Transfers must be completed within three weeks of the sale date.
 - Ewe lambs nominated at public auction managed by Heartland Group, Banner Sale Mgt, or any other recognized sale management, will be recorded by the sale management at the time of the show and designated with an F brand prior to the sale.
- The AHSA will not be held responsible for any dispute and or disagreements between buyers and sellers.
- Lambs will be permanently identified for futurity purposes and recorded by their individual scrapie tag number and/or flock tag number.

2019 Hampshire Ewe Lamb Futurity Point Record Form

I, (exhibitor name) _____ have shown the Hampshire ewe lamb (Breeder, flock tag #) _____, (scrapie tag #) _____ (AHSA Reg #) _____. The ewe lamb, which placed _____ in a class of (total head #) _____ (provide class name: Fall, Jan etc.) _____ ewe lambs, was shown in the (open or junior) _____ division of the following livestock show: (show name along with city, state) _____ on this date _____.

This ewe lamb is competing in the fitted division _____ or the slick shorn division _____.

This placing is verified by the superintendent of the above listed below.

Show Superintendent Printed Name: _____

Show Superintendent Signature: _____

Superintendent Contact Phone Number for Verification of Placing: _____

Please verify that the youth owning the lamb did physically show the lamb unless physically impaired. If physically impaired, please verify that the youth owning the lamb was present at the show.

Youth signature (owner of lamb) _____ Member # _____

Please make sure all blanks are completed when mailed to the AHSA office or the form will be invalid.

Forms are required to be postmarked and mailed or faxed to the AHSA office by November 1, 2019.

American Hampshire Sheep Association
PO Box 231, 305 Lincoln St.
Wamego, KS 66547
Fax: 758.456.8599



We raised HIM,
his SIRE,
his GRAND
DAM,
and his
GREAT
GRAND DAM



We also bred the
2nd place January
ewe lamb

**Semen available for \$125,
including LAP-AI services at
our facilities.**

Champion Hampshire Ram

**Storms Hampshires,
Dorsets, and Border Collies**

**2018 NAILE
Jr. and Open
Shows**

www.stormshampshires.com
Mike, Lee, and Suzanna Storms
309-645-3052 mstorms@hughes.net

Hampshire History

We look back at 1980 in this issue for the Hampshire breed. The president of the AHSA was Ben T. Powell, TN. The vice president was Clifford Throckmorton, TX and the executive secretary was Jim Cretcher, MO. Other directors included: Chauncey Hubbard Jr., OR, Hal Yeager, CO, Earl Christensen, NB, Mike Caskey, MN, Darryl Kleinert, IL, Dr. Tom Huber, GA, Clyde Brubaker, PA, Dan Schlichter, OH, and Richard Reynolds, WA.

The AHSA registered 21,360 head of sheep in 45 states. The largest number of sheep was in Illinois with 2293 registered. Few breeders that registered a large number of sheep in 1980 include: Top-Notch Farm, Pine Lawn Farm, Joe Cabaniss, University of Illinois, Art Nelson & Family, Heggemeier Sheep Farms, and R.W. Hogg & Sons.

The 1980 National Hampshire Show was held at the North American International Livestock Expo. The Champion Ram was bred & owned by Pine Lawn Farm, Mike Caskey & Family. The Reserve Champion Ram was bred & owned by Greg Deakin. The Champion Ewe and Reserve Champion Ewe were bred & owned by Heggemeier Sheep Farms. Heggemeier Sheep Farms was also the first-place flock.

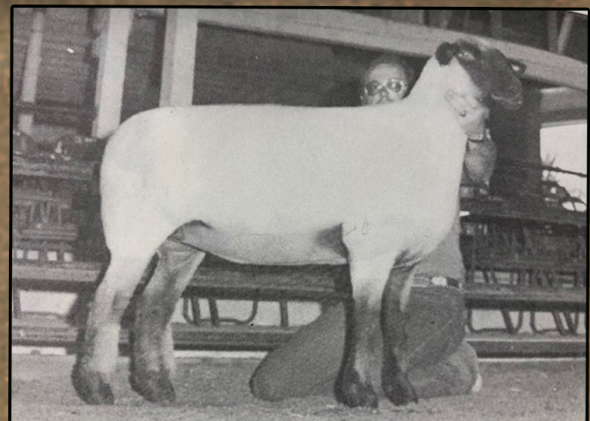
In the National Junior Hampshire Show Champion Ram shown by Rebecca Hope and the Reserve Champion Ram was shown by Derek England. The Junior Champion Ewe was shown by Roger D. Nichols, II and the Reserve Champion Ewe was shown by Niemeir Brothers.

In looking through the 1980 flockbook we will share a quote from the president Ben T. Powell. that is still true today.

"The ultimate strength of our association lies with its junior members. I call upon every member of our association to assist and promote young people who have an interest in sheep."



International Champion Ram
Caskey Green 616 Tw. 502815
Bred & Owned by Pine Lawn Farms,
Mike Caskey & Family, Holland, MN



International Champion Ewe
Heggemeier 79 - 139 Tw. 10451 A
Bred & Owned by Heggemeier Sheep Farms,
Kirkland, IL

**HAMPSHIRE
QUALITY
AT ITS FINEST!**

Niemeier 723 "Big Guy"

His lambs, although late look great.
Call us to come see them.

Special Thanks to Held's
Hampshires as we are
honored to sell an
established, prominent
breeder a stud buck.



Thanks to Nathan Leemon on
his purchase of a package of
ewes and two stud rams, and
Roger and Connie Corbin who
bought a stud ram.



Watch for our Midwest Sale entries. Selling 4 top rams,
including a yearling, two fall ram lambs and a January
ram lamb. They are bred similar to Niemeier 723.

**NIEMEIER
HAMPSHIRES**

4704 BLACKBURN ROAD
EDWARDSVILLE, IL 62025
618-541-0605

NIEMEIERFARMS@GMAIL.COM

CONSISTENT GENETICS CONSISTENT RESULTS



CASKEY 8546

PURCHASED BY MIKE BARNES



CASKEY 8590

PURCHASED BY RYAN RICHARDSON



CASKEY 9411

PURCHASED BY TVRDY HAMPSHIRE

THANK YOU BUYERS!

- *RYAN RICHARDSON, IL
- *MIKE BARNES, OH
- *ADEL RAGHEB, MN
- *DON CALL, MA
- *LOGAN EINCK, MN
- *JOHN TVRDY, NE
- *CHRISTIAN TIFFT, IA
- *BEAU MUMM, IL
- *JEFF MCCONN, PA



FOR SALE OFF THE FARM

- *STUD RAM LAMBS
- *YEARLING EWES
- *EWE LAMBS
- *ELITE BROOD EWES



CASKEY 9422

PURCHASED BY BEAU MUMM

ELITE BROOD EWES

FOR SALE PRIVATELY
CONTACT US FOR DETAILS
ON THESE FLOCK
IMPROVING FEMALES.



CASKEY 9448

PURCHASED BY CHRISTIAN TIFFT

OUR 6TH ANNUAL
SHARING THE GENETICS SALE
AVERAGED \$950

MIKE, CARRIE, JASON & KYLE CASKEY
1222 171ST ST. HOLLAND, MN 56139

PH: 507.347.3229 | CELL: 507.215.0266

MCCASKEY@WOODSTOCKTEL.NET | WWW.CASKEYPINELAWNFARMS.COM



WITH



HELP, YOU TOO CAN SEE THE

LIGHT AT THE

END OF THE TUNNEL

FOR YOUR SHEEP/GOAT

EQUIPMENT NEEDS!!!

SYDELL INC., 46935 SD HWY 50 BURBANK, SD 57010

PHONE: (605) 624-4538 TOLL FREE: 1-800-842-1369

WEBSITE: www.sydell.com EMAIL: sydell@sydell.com

AHSA Hamp Ram & Ewe Online Sale Results

April 30th, 2019

Lot #1 Bobendrier 18 - 47
Seller: Bobendrier Hampshires/Chuck
Buyer: Adel Ragheb - Watertown, MN

Lot #3 Alf 159 - 18
Seller: Alf Hampshires
Buyer: Jeffrey McConn -
West Alexander, PA

Lot #4 Bobendrier Boys 18 - 57
Seller: Bobendrier Boys/Tom
Buyer: Haley Christensen -
Candy, MN

Lot #5 Bobendrier Boys 18 -55
Seller: Bobendrier Boys/ Tom
Buyer: Duane Grimme -
West Alexander, OH

Lot #6 Gillmore - Davison 18 - 34
Seller: Gillmore - Davison
Buyer: Duane Grimme

Lot #7 Bobendrier 18 - 70
Seller: Bobendrier Hampshires/Chuck
Buyer: Duane Grimme

Lot #8 Bobendrier 18 - 175
Seller: Bobendrier Hampshires/Chuck
Buyer: David Pinckney - Cayuga, NY

Lot #9 Hickman 1429
Seller: Jim & Joy Hickman
Buyer: Adel Ragheb

Lot #10 Houghtaling 18 - 859
Seller: Houghtaling
Buyer: Randall Berens - Parker, SD

Lot #11 Held 18 - 2082
Seller: Held Hampshires
Buyer: Adel Ragheb

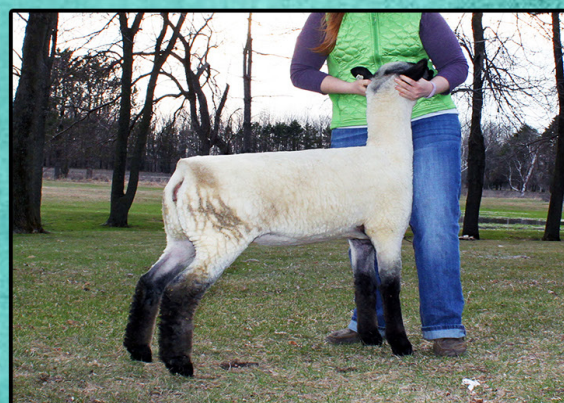
Lot #12 Schiefelbein 1902
Seller: Schiefelbein
Buyer: Brady Carter - Starbuck, MN

Lot #13 Hickman 1446
Seller: Jim & Joy Hickman
Buyer: Adel Ragheb

Lot #14 Hauger 19030
Seller: Hauger Club Lambs
Buyer: Heather Ennis -
Martinsville, IN

Lot #15 Bobendrier 19 - 38
Seller: Bobendrier Hampshires
Buyer: Duane Grimme

Lot #18 Drewry 18342
Seller: Drewry Club Lambs
Buyer: Melissa Vosika -
Gregory, SD



Lot #1 Bobendrier 18 - 47
Yearling Ewe - Sold for \$900

Lot #6 Gillmore - Davison 18 - 34
Yearling Ewe - Sold for \$950

Lot # 12 Schiefelbein 1902
Ewe Lamb - Sold for \$1200

Highland Hampshires

Thanks to all our Bidders and Buyers at the
2019 Big Ohio Sale



Klug HH 18-205 3rd Fitted Fall Ewe—Big Ohio Sale



Introducing "Ryn" - Houghtaling 18-865
2nd Fitted Fall Ram Lamb—Big Ohio Sale

Don't miss our Midwest Stud Ram Sale
Yearling Ewe Entry!

Gary T. Klug
939 Hazel Rd.
Harlan, IA 51537
(712)202-4461
klughihamp@tm.net



Lynn K. Lee—Flock Emissary
Ryan Bingen—Aesthetics Engineer

Dylan R. Klug
1033 1st Ave.
Grafton, WI
dklug2001@gmail.com

Mumm Hampshires



M1843

**Sire: M1684 - Yr Ram we
sold last year**

**Dam: M1207—which is one
of our leading foundation
ewes**

M1820

Sire: Bobendrier Boys 15-16

Dam: M1657



**We will also be selling 2 February
ewe lambs but unfortunately don't
have pictures yet**

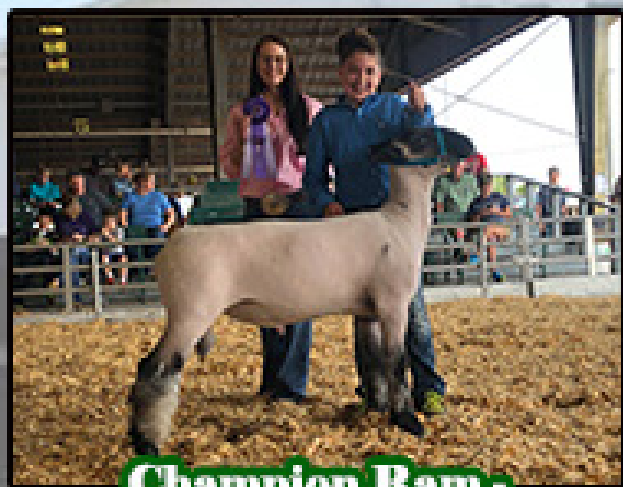
Jason, Megan, Beau, Luke & Emmalou Mumm

49 CR 1300 N - White Heath, IL - 217/377-2073 - meganmumm@hotmail.com/www.mummhampshires.com



MIDWEST JUNIOR PREVIEW SHOW

Sedalia, MO
May 31st - June 1st, 2019



**Champion Ram -
Alivia Porter, IL**



**Reserve Champion Ram -
Trey Spoonster, MO**



**Grand Champion Ewe -
Campbell Coyle, KY**



**Reserve Champion Ewe -
Morgan Haugher, IN**



**Junior Champion Ewe -
Morgan Haugher, IN**



**Reserve Junior Champion Ewe -
Tinleigh Spoonster, MO**

Gathering of Generations for a Timeless Tradition

The One and Only
MIDWEST
 STUD RAM SALE

North America's Largest & Greatest Sheep Sale!

Don't Miss the Hampshire Excitement!



Wednesday, June 26th ~
HAMPSHIRE SHOW
 Judge: Greg Ahart

Friday, June 28th ~
NATIONAL HAMPSHIRE SALE

SEDALIA

MISSOURI STATE FAIRGROUNDS

JUNE 24 • 29

Miss the April 20th Entry Deadline?

No Problem! ... We'll accept entries up through the day of the show, but they will not be included in the printed or online catalog.

Online Searchable Catalog and Full Print Catalog PDF Available Late May at:
www.midwestsale.com



CHAMPION HAMPSHIRE EWE

Thursday, June 27th ~
**HAMPSHIRE WETHER
 SIRE & DAM SHOW**

Judge: Jimmy Davis
 Saturday, June 29th ~
**NATIONAL HAMPSHIRE
 WETHER SIRE & DAM SALE**



Again this year...
 All Shows & Sales Live Streamed:
www.dvauction.com



CHAMPION HAMPSHIRE RAM



**SUPREME CHAMPION
 HAMPSHIRE WETHER DAM**



**SUPREME
 CHAMPION
 HAMPSHIRE
 WETHER SIRE**

Sale Managed by



LIVESTOCK SERVICES, LLC
 PO Box 72 - Milo, IA 50166

Find Complete Schedule for All Events & Times Online:

www.midwestsale.com

(515) 442-0950 • info@midwestsale.com



NELSON *Hampshires*

BUDDY
home raised ram



ALF ram



yearling ewes
Sedalia candidates



Rodney & Kathy Nelson

13329 WCR 74 Eaton, CO 80615

R: 970-481-9837 | K: 970-481-0861 | Nelsheep1@what-wire.com

CHAPIN HAMPS

Bill & Carole, Derek, Laura,
Clive & Quincy
Coal City, IL 60416
(815) 954-5129 chapinhamps@gmail.com



Banner ©
Champion Ewe –
Illini Bred Ewe Sale 2018
Sold to Owen Trone, Illinois

Sound, Honest, Consistent
Hampshire Sheep



Size, Thickness, Bone & Beauty

“Easy Keepers” that will work in
any flock – especially YOURS!



2nd Fall Ram at 2018 NAILE
Sold to Duane Deckert, North Dakota



February 2018 Ewe Lamb
Will be on the 2019 show circuit or
may show up at one of the
Ohio or Illinois Sales

2019 NATIONAL SHEEP IMPROVEMENT PROGRAM SALE

The NSIP will host two sales in 2019 that sell rams and ewes that are backed by performance records, otherwise known as Estimated Breeding Values (EBVs). If your Hampshire program is geared toward using performance data, you may want to consider one of these sales. The first sale of the year is the Center of Nation NSIP sale that will be held in Spencer, Iowa on July 27th. The second sale is the Eastern NSIP sale held in Wooster, OH on August 10th. There will be educational programs and presentations about the use of NSIP at these sales. For further information or a sale catalog, visit nsip.org.

HAMPSHIRE HERITAGE HONORS RECOGNITION APPLICATION

The American Hampshire Sheep Association is honoring long-time Hampshire breeders.
In many cases this will involve multiple generations within a family.
Please complete the form below and return to the AHSA office by October 25th.

- Heritage Honors Rules and Info:
1. Must be families continuously raising Hampshires.
 2. Must apply by October 25th of each year.
 3. Awards will be given at the AHSA annual meeting in Louisville, Kentucky.
 4. Applicants must provide proof of when the Hampshire flock was established.
 5. Applicants must be current Senior or Junior members of the AHSA.

Name: _____ Farm Name: _____

Address: _____ City: _____ State: _____ Zip: _____

Phone: _____ Email: _____

What is the Name on your AHSA Membership: _____
(if different from your own name, i.e. farm name, joint owners, etc)

How long have you been continuously raising Hampshires: (mark box that applies to your highest number of years)

- | | | | | |
|-----------------------------------|-----------------------------------|-----------------------------------|---|-----------------------------------|
| <input type="checkbox"/> 5 years | <input type="checkbox"/> 10 years | <input type="checkbox"/> 20 years | <input type="checkbox"/> 30 years | <input type="checkbox"/> 40 years |
| <input type="checkbox"/> 50 years | <input type="checkbox"/> 60 years | <input type="checkbox"/> 70 years | <input type="checkbox"/> 80 years or more | |

Please include a writeup with the following information included:

When/Where did you first start with sheep? and how did you acquire them?

Who was responsible for encouraging you to start breeding Hampshires?

How many previous generations in your family have raised Hampshires?
If any, please list names, dates started and location of flock.

How many current generations are involved with Hampshires?
If any, please list names, dates started and type of involvement.

Have you or your family received any significant Local, State, Regional or National awards or recognitions within the sheep industry?

Have any animals from your flock earned Champion honors at the Local, State, Regional or National levels?

How have you supported the AHSA and the sheep industry?

What is your involvement with the sheep industry today? and what is the current state of your Flock?

Please send along no more than 20 items: photos, old registration papers, or other documents authenticating the existence of a Hampshire flock owned by your family?
Please provide captions for each photo/item.

Make sure to return your application to the AHSA Office by October 25th!

AWARDS WILL BE GIVEN AT THE AHSA ANNUAL MEETING IN LOUISVILLE...
SO MAKE PLANS TO ATTEND, HOWEVER IF YOU ARE UNABLE TO BE AT THE MEETING THEY WILL BE MAILED TO YOU AFTERWARD.

Youth Connection Article - Summer 2019

How to keep lambs healthy over the summer

For most students, summer is a time of laying out by the pool, playing games, and a break from school for three months. For students involved in showing livestock, summer is also a time for many hours of hard work both in the barn and the showring. Since each of us loves the sport of showing and memories made each summer, it is important that we ensure our livestock are properly taken care of over the summer months so that we can enjoy such events. There are 4 main factors to ensure your livestock are on the right track to staying happy and healthy throughout the summer months.

1. Hydration
2. Staying cool
3. Shearing
4. Fly Protection

1. **Hydration** – Water is the most essential nutrient for sheep and any other mammal. In fact, sheep can only survive 1-2 days without water and the time frame can be even shorter in hot temperatures or times of stress. Depending on the animal's size, breed, stage of life, environment, and stress level, sheep can require anywhere from 1-8 gallons of water a day. Thus, it is important that one keeps an adequate amount of fresh, clean water available to their stock daily. If the environment temperature is hot and you are trying to cool your animal down, it is important that they are given cool water to better aid them in cooling themselves down. Otherwise, water at room temperature is sufficient.
2. **Keeping them cool**– Just like humans, sheep can sunburn when they have too much exposure to the sun. Too much exposure to the sun can also result in them getting overheated. Thus, it is very important to provide access to shade for sheep out in the pasture to escape these hot conditions. Shade structures can be constructed from shade cloth, mesh fabric, tarps, canvas, or even sheet material. These low-cost structures or even mature trees provide excellent shade and shelter to make sure your animals are staying cool. For those sheep in the show barn, it is also possible that they will need fans to better help them regulate their body temperatures. In humid conditions, it is important to keep air moving through the barn to aid in comfort for you and the animals.
3. **Shearing**– Wool provides insulation from both the heat and the cold. According to Michigan State University Extension, research shows that sheep with a one-inch fleece are more comfortable than sheep with less wool because the wool fibers dissipate heat more rapidly. Keeping a short amount of fleece on your sheep also aids in sun burning. If your lambs are slick shorn it is very important to make sure your lambs are protected from the sun through shade or insulated blankets.
4. **Fly Protection**– One con to the early mornings and late summer nights in the barn are the mosquitos and flies that come with the heat. Not only do these pests annoy us, but also the sheep. It is important to protect our sheep just as we would protect ourselves in order to prevent diseases such as fly strike or cause infection. Such prevention can include fly spray, fly traps, or even fly tags for those ewes or rams out on pasture.

By monitoring these four factors, you are better able to maintain your lambs' health this summer! We wish all of our Junior Hampshire Exhibitors the best of luck both in and out of the showring.

Youth Activity

Everyone LOVES a great snack, especially after a long day in the showring. Here are some quick and easy snacks one can take to a show that everyone will love!

No-Bake Sheep Grahams

What you will need:

- Graham Crackers Squares
- Either vanilla frosting or cream cheese
- Blueberries or black candies
- Mini marshmallows
- Small candy eyes

Directions:

1. Spread either the vanilla frosting or cream cheese on the graham cracker square
2. Put either a blueberry or black candy on the middle bottom half of the graham cracker square
3. Take a toothpick or small knife and place a small amount of your frosting or cream cheese on the back of the small candy eyes and place on either the candy or blueberry (for the face)
4. Fill the remaining space of the graham cracker with mini-marshmallows (as the wool)

Recipe from: <https://dancingthroughtherain.com/no-bake-sheep-grahams/>



Featuring Lane Brooks



Introduce yourself & your family.

My name is Lane Brooks from Russellville, TN. My parents are Jamey and Casey Brooks. I have a brother Levi Brooks and a sister Eliza Brooks. I am 16 years old and attend Morristown East High School. I am a 7 year member of the Hamblen County 4-H program. I currently serve as Hamblen County Honor Club President and Vice President of the Hamblen County Livestock Club. Also I am the newly elected Vice President of the Morristown East FFA Chapter. I have took many Ag Courses throughout my high school experience. With having so many responsibility through these clubs, I also am the owner and operator at Walnut Ridge Hampshires. I am as active within my church as I am within these clubs.

Number of Hampshire in your flock.

I currently have a flock of about 40 Hampshires ewes.

Favorite show you have attended and why?

My Favorite show I attend is the North American International Livestock Exposition in Louisville, KY. I truly enjoy watching so many high performing sheep from all over this great country compete in one ring. I also visit friends I only get to see twice a year that I have met through the sheep industry. Lastly, I enjoy sitting through the Hampshire sale and looking for ewes that could possible help my operation. Hampshires have one of the largest number of attendance in NAILE.

What do you like about Hampshires?

When I first was looking at the different breeds of sheep, the breed characteristics definitely stood out to me. I fell in love with the shaggy legs and the wool cap on there head. Not only do they contain style, the breed can contain plenty of muscle and frame to go along with the style. They are great mothers that produce fast growing lambs.

What is your fondest sheep memory?

My fondest sheep memory is when I purchased my first flock of Hampshires. Wise Hampshires granted us the opportunity to purchase four ewes and a ram to start our flock. On the day after Thanksgiving I drove 16 hours to pick the sheep up. Since that day I have had made more memories throughout my years in the show ring or teaching younger kids how much work goes into getting a lamb ready to show at a local show camp. I can say since that day I have spend many sleepless nights and long days at the barn, but I would not trade my experience for anything in the world.

Future plans and goals.

My future plans is to continue to show sheep till I go to college. I have two siblings I will raise show lambs for and hopefully sell some lambs for some younger kids to show and enjoy. I want to work for an Extension program when I graduate a 4 year college. I hope I can be a mentor and lead some youth to have a passion about agriculture as I do. My Extension agent has made a huge impact on my life and I want to do the same for other kids in the future.

Advice you would like to share with junior Hampshire members?

Mike Kleinert shared some wise advice with me years ago when I began to start my flock. "Raise what you love or you will never be happy with your flock". This advice is so true when you go looking to buy sheep. I started with Fitted and Slicked Hampshires but I just fell in love with Slicked style. Once I quit chasing the trend the Sheep industry went through, I was happier raising the shaggy leg, heavy muscled, big boned ewes that are so stylish to watch move throughout the ring. Don't chase trends and raise the sheep that makes it enjoyable to go to the barn. Don't be scared to call other sheep breeders and get some advice you can use to make an impact to your flock. Lastly, don't ever think your finished improving your flock. You have to keep working to make your operation the best it can be. In my experience I have found these things to help grow the quality of my flock. be easy, but don't give up; my sheep have taught me hard work is the path to success. Lastly, believe in yourself and have confidence, it shows in the ring!



AHSA OFFICE STAFF



Pictured is the current office staff from left to right. Mary Short, filled our office manager position in May. She is originally from California and although she has very limited livestock experience she looks forward to learning about sheep as she provides us with her extensive customer service skills. Next, is Amber Thompson who began work on June 3rd as the director of member services. Amber was born in New Mexico and transplanted to Kansas. She has an extensive amount of experience with social media and worked for the American Royal. Third, is Megan Myerscough from Illinois. Megan is the summer 2019 intern in our office. Megan and her family raise Dorsets. The next three individuals, Jennifer Wenderott, Janette Fund and Joelle Sylvester have all been with the AHSA for varying lengths of time. Jennifer started in August of 2018 and does mostly design and layout of our various forms. Janette has been with the AHSA for four years and Joelle for 18 months.

They both do data entry for registry work for the various associations that we serve.

American Hampshire Sheep Association

2019 Scholarship Program

Purpose:

The American Hampshire Sheep Association offers scholarship(s) to junior Hampshire members to reward their work as Hampshire breeders and to encourage participation in Hampshire activities. The scholarship is available to any American Hampshire Sheep Association member (junior or senior) who is pursuing a college education following high school graduation and who has not passed their 21st birthday as of January 1, 2019.

Scholarship Information:

Scholarships will be awarded on an annual basis. The number of scholarships and the scholarship value will be reviewed annually by the AHSA Scholarship Committee (Youth Advisory Board). The AHSA Scholarship Committee will select a non-bias committee to review and rank the scholarship applications. Scholarships will be awarded September 1 with announcement of the scholarship winner(s) prior to the Annual Meeting of the AHSA held annually in November in Louisville, KY.

Scholarship Requirements:

- Applicants must be either an active member of the American Hampshire Sheep Association (either a junior or senior member) or an immediate family member whose parents are members of the AHSA. Applicant must be an active member of the American Hampshire Sheep Association for a minimum of 3 years.
- Applicants must not have passed their 21st birthday as of January 1, 2019
- Applicants must be enrolled and in good standing at a college, university or technical school as of September 1st and must intend to enroll in classes at that school the next semester following the application deadline.
- Eligible members may re-apply for the scholarship if they meet the eligibility requirements for the application year.
- Applications will not be accepted from previous AHSA scholarship winners.
- Employees of the AHSA and their family members are not eligible to apply for the AHSA scholarship.

Scholarship Criteria:

- Hampshire experiences and achievements – 50%
- Leadership, school activities, community involvement – 30%
- Essay – 20%

Application Process:

- Applicant must complete the application for and submit the form per the instructions provided below. Application forms can be found on the AHSA website, or by contacting the AHSA office.
- Applications may be submitted either electronically or sent via the mail.
- A copy of the most recent school transcript must be included when submitting the scholarship application. If first semester freshman, attach proof of enrollment and high school transcript. Transcripts may also be sent electronically.
- All applications submitted must include the AHSA scholarship application form, summary and essay, along with transcripts. Applications must be postmarked or electronically submitted no earlier than May 1st and no later than July 1st to:

AHSA Scholarship
PO Box 231
Wamego, Kansas 66547
Email: asregistry@gmail.com

Scholarship winners will be notified by September 1st.

Scholarship winners who are able to attend will be recognized during the AHSA annual meeting. The 2019 AHSA annual meeting will be held in Louisville, KY during the North American International Livestock Exposition.

Summaries and Essay:

- Please list your leadership roles, volunteer work, honors and awards.
- Please submit a copy of the most recent school transcripts. If first semester freshman, attach proof of enrollment and high school transcript. Transcripts may also be sent electronically.
- Submit a 500-word essay in response to the following question: What have your experiences related to raising Hampshire sheep taught you that will help you to achieve your career goals.
- Fill out the information below and submit a picture to be used when the winners are selected

Applicant's Name: _____ Date of Birth: _____

Parent's Name: _____

Address: _____

City, State and Zip: _____

Email Address: _____

Phone: _____

Current Year in School: _____

School you are currently attending: _____

Number of years that you have raised or showed Hampshires: _____

Current Flock Size: _____

Notable participation (including state, regional and national shows or contests): _____

**Newland
Hampshires**

**We have a group of 6 or 7 yearling
ewes for sale.**

Caskey and Mike Andrew Breeding
Delivery available to Sedalia

Merle Newland - (785) 418 - 3168

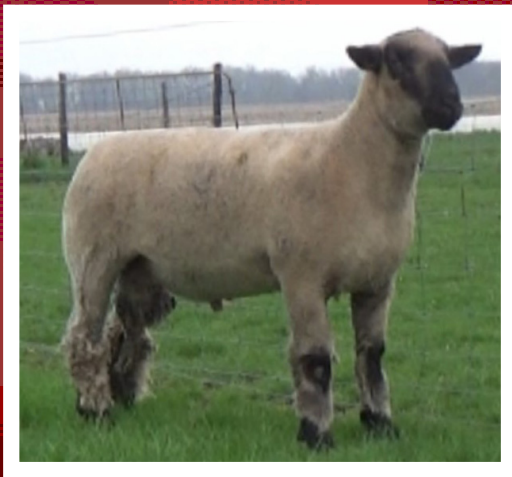
KLEINERT HAMPSHIRE

"Quality Breeding Lasts Forever"

THANKS TO OUR BUYERS!

PARADIGM HAMPS/JON FIELDS - CALIFORNIA
EBERT SHEEP FARM - KANSAS
TRAVIS SCHAUER - MINNESOTA
KYLIE MOUBRY - ILLINOIS
SAM SCHNEIDER - ILLINOIS
AYDEN SHANK - ILLINOIS
RIHANNA & KYLIE CYR - ILLINOIS

KENNY ORTMAN - INDIANA
GRACE PEARSON - INDIANA
ADAM CORNELL - INDIANA
POE HAMPSHIRE - INDIANA
ELLIE PARKER - INDIANA
JUSTIN WILLOUGHBY - INDIANA
BRISTOL BROWN - TENNESSEE
LANE BROOKS - TENNESSEE



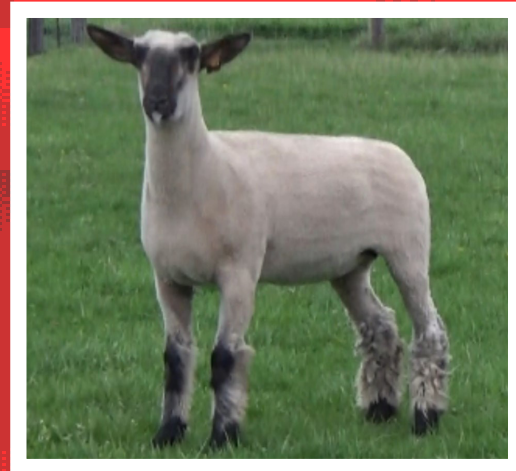
KLEINERT 5132



KLEINERT 5198



KLEINERT 5205



KLEINERT 5207

**SEE MORE AT WWW.KLEINERTHAMPSHIRE.COM
+ CONTACT FOR SEMEN AVAILABILITY.**

MIKE KLEINERT | KLEINERT HAMPSHIRE
2873 N 1600 EAST RD. | CLIFTON, IL 60297

C: 815.383.0962 | KLEINERTHAMPSHIRE@YAHOO.COM | WWW.KLEINERTHAMPSHIRE.COM

Calling Junior Members: AJHSA Ambassador Program

Since the NAILE last November, seven youth have represented the Hampshire breed as ambassadors. In their role, they have planned activities and events for Hampshire junior members at the NAILE, National Hampshire Sale in Sedalia and the All-American Junior Show. They also have promoted the breed at events, on social media and in industry publications.

These ambassadors include:

- President Danielle Houghtaling from Doland, South Dakota
- Vice President Jenna Sullivan from Moodus, Connecticut
- Secretary-Treasurer Amanda King from Petaluma, California
- Campbell Coyle from Danville, Kentucky
- Morgan Hauger from Connersville, Indiana
- Faith Houghtaling from Doland, South Dakota
- Grace Powell from Watertown, Tennessee

Except for the officers, these board members are serving one year terms. While they are eligible to re-apply for their positions, others may apply for consideration. Youth that are a paid member of the AHSA or the AJHSA and between the ages of 13 and 21 are encouraged to apply. The application is due Sept. 30, 2019, with successful applicants being notified before the North American International Livestock Exposition in Louisville, Kentucky.

We look forward to seeing your application!

AJHSA Board Proposed Guidelines

1. Any youth between the ages of 13 and 21 years old, who is in good standing with the American Junior Hampshire Sheep Association may apply to serve on the American Junior Hampshire Sheep Board of Directors.
2. The AJHSA Board of Directors will be appointed by the AHSA Board of Directors. Once appointed, they will serve a one-year term, except for those appointed to officer roles, who will serve two-year terms.
3. The AJHSA Board of Directors shall select from their numbers a President, Vice President and Secretary/Treasurer, whose roles are defined below.
 - a. The AJHSA Junior Board President will preside at official AJHSA meetings and conference calls, appoint committee chairs and acts at liaison with AHSA Youth Committee.
 - b. The AJHSA Junior Board Vice President will assume and perform the duties and responsibilities of the President during the President's absence.
 - c. The AJHSA Junior Board Secretary/Treasurer will maintain records of all meetings of the AJHSA and work with the AHSA Executive Director to develop and maintain a budget for the AJHSA.
4. AJHSA Board Members will be expected to complete the following requirements:
 - a. Must attend and participate in a leadership role at one National Hampshire Event. These events, where the AJHSA Board will meet, include:
 - i. North American International Livestock Exposition in Louisville, Kentucky
 - ii. March/April Meeting, Location TBD
 - iii. National Hampshire Sale in Sedalia, Missouri
 - iv. All American Junior Show
 - b. Attend sheep functions within their state and region to promote the Hampshire breed. At these events, AJHSA logo wear should be worn.
 - c. Promote AJHSA through written articles, blogs, exhibits and photographs using email, Facebook, Twitter and other media.
 - d. Participate in conference calls and respond to email, texts and other communication.
 - e. Conduct themselves in a professional manner when representing the AJHSA.

American Junior Hampshire Board Application

Name: _____ Date of Birth _____

Address: _____

City: _____ State _____ Zip _____

Phone: _____ Email: _____

American Junior Hampshire Sheep Association Member Number _____

1. Discuss how you became interested in raising Hampshire sheep and becoming a member of the AJHSA.
2. Tell us about your leadership involvement and how your experiences would positively influence the AJHSA Board of Directors.
3. Describe two things regarding the junior association that you would change or add to make the association more accessible and engaging for youth members.
4. Please discuss any additional qualifications, here.

- You may use extra pages as necessary -

Requirements:

- Be a member of the AJHSA or AHSA
- Currently age 13-21 as of Jan. 1, 2018
- Completed application postmarked or emailed by Sept. 30, 2019

Junior Board Members Responsibilities

1. Must attend and participate in a leadership role at one National Hampshire Event. These events, where the AJHSA Board will meet, include:
 - North American International Livestock Exposition in Louisville, Kentucky
 - A March/April Meeting, Location TBD
 - National Hampshire Sale in Sedalia, Missouri
 - All American Junior Show
2. Attend sheep functions within their state and region to promote the Hampshire breed. At these events, AJHSA logo wear should be worn.
3. Promote AJHSA through written articles, blogs, exhibits and photographs using email, Facebook, Twitter and other media.
4. Participate in conference calls and respond to email, texts and other communication.
5. Conduct themselves in a professional manner when representing the AJHSA.

I have completed the application in its entirety. My parent/guardian and I have read all the requirements and responsibilities and understand that a junior board member may be removed from service for not completing the responsibilities of junior board member.

Print applicant's name _____

Applicant's signature _____ Date _____

Please return completed application postmarked by Sept. 30, 2019, to:

Jeff Ebert
American Hampshire Sheep Association PO Box 231
Wamego, KS 66547
785-458-9174
asregistry@gmail.com

NATIONAL HAMPSHIRE SALE

The National Hampshire Sale and National Hampshire Wether Sire Sale will again be held during the Midwest Stud Ram Sale on June 24th – 29th in Sedalia, Missouri. The Hampshire events will kick off with our second-annual junior show that will be held Tuesday, June 25th at 6:00 p.m. in the Swine Barn with Tracy Dendinger as the judge. There will be classes for fitted and slick shorn yearling ewes and ewe lambs. There will also be showmanship classes offered. Sale discounts will be awarded to the champions and showmanship winners. There is an entry form on the AHSA website. The show to set the sale order will be held on Wednesday, June 26th in the south ring of the Sheep Barn with Greg Ahart as the judge. The Hampshire Wether Sire Show will be held on Thursday, June 27th in the Swine Barn with Jimmy Davis as the judge. On Friday, June 28th, the National Hampshire Sale will take place at 8 a.m. in the Swine Barn. On Saturday, June 29th, the National Hampshire Wether Sire Sale will take place at 8 a.m. in the Swine Barn.

The AHSA will provide donuts and on both Friday and Saturday morning during the Midwest sale. They will also provide water over the duration of the week. Furthermore, the AJHSA will have a silent auction during the Midwest Sale, donations for the junior fundraiser are welcomed. We look forward to seeing you in Sedalia for the Hampshire activities!

Featuring Hayden Taylor

Introduce yourself & your family

My name is Hayden Taylor and I'm 16 years old from Arlington, Wisconsin. My parents are Todd and Lynnette Taylor. I have been in 4-H for 10 years and FFA for 3 years. I have participated on the Livestock Judging, the Meats Judging, and Skillathon teams at the state level for 4-H. I also competed on the Livestock Quiz Bowl team at the National contest in AKSARBEN. I have also competed on the Livestock and Meats Judging teams with my FFA chapter.

Number of Hampshires in your flock:

Triple H Hamps consists of 14 ewes, 5 rams and ram lambs, and 10 ewe lambs

Favorite show that you have attended and why?

My I think that the All American Junior Sheep Show would be my favorite due to all of the activities that we do as groups. I especially like the 3 on 3 Basketball tournament where we get to meet so many different people. There is also so many educational activities to do: like the Skill-a-thon, the judging contest, the poster contest the essay contest, the power point, the t-shirt design contest.

What do you like about Hampshires?

They are a fun breed to show with a lot of competition. I like that they have good qualities to be show wethers as well. I have learned about the Hampshire breed from working on the UW-Madison farm with my Dad. I like having my own flock of Hampshires and being able to have his help and I can follow in his footsteps.

Fondest Sheep Memory?

The very best memory I have is my very first ewe of my own. She was an orphan and Dad told me to go feed the new orphan, so I went into the pen and she just ran up to me. She would follow me everywhere after that. She became my foundation ewe and produced a lot of good rams and ewes for me.

Future Plans and Goals?

I want to keep my flock growing. I would like to eventually have about 50 head of ewes. I plan to keep them enrolled in NSIP and keep working on raising good quality productive sheep that look good in the show ring as well.

Advice you would like to share with Junior Hampshire members?

Work hard, don't give up, be patient – good things will happen down the road.



35th NORTH EAST YOUTH SHEEP SHOW

JULY 18-21, 2019

Mallory Complex, Eastern States Exposition -- West Springfield, MA

The North East Youth Sheep Show (NEYSS) is the 3rd largest and longest running youth sheep show in the country. It is the premier all-breed junior show in the northeast, attracting 200 youth exhibitors and 600-700 head of sheep, with 20+ breeds represented.

Weekend activities include:

- Breed Shows
- Market Lamb Show
- Fleece Competition
- Fitting & Showmanship Classes
- Skill-a-thon & Quiz Bowl Contests
- Educational Clinics
- Friday Fun Night – Pizza party & Ice Cream Social
- Saturday Used Equipment Auction
- Presentation of the NESWGA Harry Hardwick Scholarship, Youth Grants & Spirit Awards

Premiums and participation awards are given, as well as breed Champion and Reserve Champion banners and sashes. The weekend culminates with the selection of the Supreme Ram, Ewe, and Flock awards. The NEYSS is open to youth 21 years old and under. The deadline to enter is June 15, 2019.

The NEYSS is sponsored by the New England Sheep & Wool Growers Association (NESWGA). It is supported by national breed associations, local organizations and individual sponsors. To learn more about the NEYSS or the NESWGA, please visit www.nesheep.org.

This year, the American Hampshire Sheep Association (AHSA) will provide an additional \$500 for the Hampshire exhibitors of this show.



State Hampshire Associations

OHIO HAMPSHIRE SHEEP ASSOCIATION OFFICERS

President: Frank Sexten
3420 State Route 380
Xenia, Ohio 45385-9735
Phone: 937-371-1392
Email: fsexten@gmail.com

Secretary/Treasurer: Marla Shell
1901 Doak Road
Midland, Ohio 45148
Phone: 614-496-8575
Email: mdshell319@hotmail.com

Vice-President: Denise Deal
9818 Navarre Rd SW
Navarre, Ohio 44662
Phone: 330-879-5327
Email: ddeal1974@aol.com

Board of Directors:
Denise Deal
Jim Brandt

This information was provided by state Hampshire associations. We encourage all of our state Hampshire associations to submit information on their activities for each issue of the Hampshire Heartbeat.

ILLINOIS HAMPSHIRE SHEEP ASSOCIATION OFFICERS

President: Megan Mumm
49 CR 1300 N
White Heath, IL 61884
Phone: 217-377-2073
Email: meganmumm@hotmail.com

Secretary/Treasurer: Bill Chapin
5680 E Reed Rd
Coal City, IL 60416
Phone: 815-954-5129
Email: chapinhamps@gmail.com

Directors:
Chris Cahoon
Luke Benjamin
Chris Meyer
Charlotte Toohill

New England Hampshire Sheep Association Officers

President: Kyle Thayer
Vice President: Darlene Leary
Treasurer: Tina Fisk Colt
Secretary: Sue Searle

MINNESOTA HAMPSHIRE SHEEP ASSOCIATION OFFICERS

President: Rod Scheller
3646 County Rd 37
Monticello, MN 56362
Email: rodscheller@gmail.com

Vice-President: Bruce Bakken
29557 State Hwy 13
Hartland, MN 56042
Email: bjbakken54@gmail.com

Secretary/Treasurer: Art Frame
16465 Paul Ave.
Worthington, MN 56187
Email: aframe@nobleswildblue.com

Director: Mark Christensen
1561 250th Ave.
Tyler, MN 56178
Email: mcchris@frontiernet.net

Director: Gary T. Klug
Box 383
Harlan, IA 515372
Email: klughihamp@tm.net

Director: Reid Merrill
2163 250 St
Canby, MN 56220
Email: rvmerrill50@gmail.com

Director: Todd Schmidt
21407 775th Ave
Albert Lea, MN 56007
Email: rschmidt76@gmail.com

Director: Tom Bobendrier
1351 US Hwy 75
Pipestone, MN 56164
Email: shebob@svtv.com

SOUTH DAKOTA HAMPSHIRE SHEEP ASSOCIATION OFFICERS

President: Brent Larson
20205 477th Ave
White, SD 57576
Phone: 605-633-1561
Email: larson76@gmail.com

Vice President: David Juntunen
43950 187th Ave
Vienna, SD 57271
Phone: 605-628-2949
Email: jute@itctel.com

Secretary: Kristin Marshall
45491 204th ST
Arlington, SD 57212
Phone: 605-770-0132
Email: marshallke83@outlook.com

INDIANA HAMPSHIRE SHEEP ASSOCIATION OFFICERS

President: Dan Myers
833 E CR 350 S
Logansport, Indiana 46947
Phone: 574-355-6840
Email: indianahamps@gmail.com

Secretary/Treasurer: Kris Myers
833 E CR 350 S
Logansport, Indiana 46947
Phone: 574-355-6840
Email: indianahamps@gmail.com

PENNSYLVANIA HAMPSHIRE SHEEP ASSOCIATION OFFICERS

President/Secretary: Mindy Holtry
717-776-4192

The main focus of the PHSA is to support junior Hampshire exhibitors at the Keystone International.

AHSA DIRECTOR ELECTIONS

It is again time to consider running for the open AHSA director positions! The election will take place this fall and ballots will be mailed in early October to all senior members who have paid their dues in the last 24 months.

Directors up for election in 2019 are Brent Larson from District #4 (MN, ND, SD, WI) Katelyn Parsons from District #8 (CT, DE, MA, MD, ME, NH, NJ, NY, PA, RI, VT) and the At-Large Director Derick Miller.

Randy Pirtle from District 3 (AZ, NM, OK, TX) is finishing up his third-term and is ineligible for re-election.

Brent Larson and Derick Miller have each served two terms and can each be re-elected one more time.

Katelyn Parsons is completing her first-year term and can be re-elected two more times.

If you are interested in running for any of these positions, please send a biography to the AHSA Office by September, 9th 2019. If you would like more information on running for the AHSA Board of Directors, contact Jeff at 785-456-8500.

2019 AHSA MEMBERSHIP DIRECTORY

ALASKA

BRITTANY TORMEY
15605 E Juniper Ave
Palmer, AK 99654
907-322-8304
bltormey@live.com

ALABAMA

NELSON-WHITE SHOW LAMBS
JESSICA WHITE
1841 County Road 7
Wedowee, AL 36278
334-863-1556
white.jessica@lee.k12.al.us

ARKANSAS

RAGZ TO RICHZ SHOW LAMBS
REAGAN GRUBBS
2374 HWY 26 East
Delight, AR 71940
870-925-0295
reaganjean34@gmail.com

WEAVER SHOW SHEEP

KRISTI WEAVER
14105 S. Hwy 265
West Fork, AR 72774
479-263-6874
ewe_are_special@yahoo.com

MICHAEL WEAVER

14105 S. Hwy 265
West Fork, AR 72774
479-263-6874
weaverdairy316@yahoo.com

WRIGHTS FARM

SUZIE WRIGHT
21551 Griggs Rd
Springdale, AR 72762
479-847-7081
swright1085@yahoo.com

CALIFORNIA

BEAM RANCH

BEN & TERRI BEAM
25050 Mariposa Rd
Escalon, CA 95320
209-614-9695
tbeam@velociter.net

BEAVER CREEK/BUCKMAN

WILLIAM & CAROL BUCKMAN
539-540 Pittville Road
Mcarthur, CA 96056
530-336-5925
Bbuck@Citilink.net

C & B CLUB LAMBS

BRIANA RAMSEY & CHRIS CERESA
81 NORTHBROOK WAY
Willits, CA 95490
707-354-0200
ceresacc@gmail.com

ROGER CURL

1430 Dias Dr
San Martin, CA 95046
408-310-8166
rcurl@garlic.com

ESTES SHOW LAMBS

RYAN ESTES
1375 N Academy Ave
Sanger, CA 93657
909-226-4836
hopanddeb@yahoo.com

FARAO CLUB LAMBS

JAMIE FARAO
28803 W Gun Club Rd
Gustine, CA 95322
209-777-1033
faraoclublams@hotmail.com

FISH CLUB LAMBS

KARIN FISH
4005 Karchner Rd
Sheridan, CA 95681
916-214-0078
kafish4@yahoo.com

SARAH FONTANA

12635 Hager Ct
San Martin, CA 95046
408-621-7733
sfontana1981@yahoo.com

KENNETH & MELANIE

FOWLE
2300 E Callahan Rd
Etna, CA 96027
530-598-1165
mfowle96207@gmail.com

HASLEM LIVESTOCK

MARSHALL & FELISHA HASLEM
9952 Esquon Rd
Durham, CA 9952
530-0986
haslemma@butte.edu

HEUVEL CLUB LAMBS

BOB HEUVEL
11458 Haggie Road
Wilton, CA 95693
916-0690-7655
heuvelclublams@hotmail.com

ANDREA JONES

2946 130th St W
Rosamond, CA 93560
661-917-2966
andrea717@gmail.com

KAELIN LIVESTOCK

DOUG KAELIN
407 Butteview Dr
Gridley, CA 95948
530-624-0723
kaelinclublams@live.com

SUNRISE SHEEP

KEENE FAMILY
13736 Lambuth Rd
Oakdale, CA 95361
209-613-7015
gypsykeene@gmail.com

THE FRENCHMAN'S FLOCK

BOB LABRUCHERIE
9671 Road 28 1/2
Madera, CA 93637
559-673-4332
labrucher@aol.com

BOB & CHERYL LAURITSEN

469-440 Lambert Ln
Standish, CA 96128
707-337-7723
napacheryl@aol.com

IMAGE CLUB LAMBS

SCOTT LAYNE
3113 North Ave
Modesto, CA 95358
209-402-7235
sdlayne@sbcglobal.net

MICHAEL LEVENTINI

624 S Indiana Ave
Modesto, CA 95357
209-605-3275
mleventini@msn.com

JANET MACHADO

6371 County Rd 24
Orland, CA 95963
530-865-2965
sdlayne@sbcglobal.net

SUZANNE MARSHALL

PO BOX 519
Caruthers, CA 93609
559-906-1248
suzanne@marshallorchards.com

MASSERA FARMS

JACK MASSERA
PO BOX 1426
Salinas, CA 93902
831-663-5537
jmassera@sbcglobal.net

ROBBY MASSERA

PO BOX 651
Castroville, CA 95012
831-236-2349
robby.massera@gmail.com

NICEWONGER CLUB LAMBS

JOHN NICEWONGER
6706 Lon-Dale Rd
Oakdale, CA 95361
209-847-8976
nicelamb1@gmail.com

JACKSON VALLEY FARMS

TOM OHM
4120 Jackson Valley Rd
Ione, CA 95640
209-274-2401
tohm@volcano.net

DUSTIE PARKER

15970 Lowery Rd
Red Bluff, CA 96080
531-526-8934
dparkerx4@me.com

PERKINS FAMILY CLUB LAMBS

MATTHEW PERKINS
12236 Robinson Rd
Gridley, CA 95948
530-498-9281
mattperkins1997@hotmail.com

HARRY SAMPSON

Po Box 115
Gazelle, CA 96034
530-340-0108
hsampson@cot.net

SCHLEGEL CLUB LAMBS

BRUCE SCHLEGEL
14820 Branston Ct
Morgan Hill, CA 95037
408-823-9434
bruces@garlic.com

SUMMEY FAMILY FARM

BLAIR SUMMEY
8200 Mccourtney Rd
Lincoln, CA 95648
916-408-8738
summeyfamilyfarm@gmail.com

WEST COAST CLUB LAMBS

GARY NIX & THOMAS EAST
9680 Eastside Road
Potter Valley, CA 95469
707-354-4369
eastcovelov@yahoo.com

PETE CRUZ TORRES

6571 N Western Ave
Fresno, CA 93722
559-797-2192
jtorr017@yahoo.com

STEVEN URENDA

PO BOX 866
Knightsen, CA 94548
707-598-1347
steven.urenda@yahoo.com

WARTJES LIVESTOCK

NICK WARTJES
7836 Patterson Rd.
Oakdale, CA 95361
209-481-3763
wartjeslivestock@gmail.com

TAMMY ZEDIKER-LUIZ

8234 Hwy A-12
Montague, CA 96064
530-459-1245
scrappinewe@gmail.com

ZEIGLER CLUB LAMBS

STEVE & CINDI ZEIGLER
2126 Boundary Ave
Ramona, CA 92065
760-445-2162
steve@zeiglerclublams.com

MORINO BROTHERS

25053 Dove Rd
Escalon, CA 95320
209-612-1989
morinobro@aol.com

COLORADO

CREGO LIVESTOCK

LARRY & DIANI CREGO
7710 Livestock Ln
Ft. Collins, CO 80524
970-482-6958

HELMING HAMPSHIRE

MARLIN HELMING
25044 Hwy 392
Greeley, CO 80631-9642
970-336-1613
mdhelming@msn.com

MACLENNAN CLUB LAMBS

DON OR LOGAN MACLENNAN
8200 Behrens Rd
Byers, CO 80103
303-822-5419
barnboss20@aol.com

MANEOTIS RANCH

NICK & KAREN MANEOTIS
Box 1698
Craig, CO 81626
970-629-2719
nmaneotis@msn.com

WILLARD MCLAUGHLIN FAMILY

400 CR 220
 Craig, CO 81625
 970-629-1196
 mclaughlinsheep@gmail.com

NELSON HAMPSHIRE

RODNEY OR KATHY NELSON
 13329 WCR 74
 Eaton, CO 80615
 970-454-3775
 nelsheep1@what-wire.com

OVERMAN CLUB LAMBS

MARK OVERMAN
 12370 WCR 78
 Eaton, CO 80615
 970-227-3869
 Onyxover@Aol.com

D & K HAMPSHIRE

PREUIT FAMILY
 286 E CR 72
 Wellington, CO 80549
 970-223-1125
 depreuit@colostate.edu

SIMPSON LIVESTOCK

JASON SIMPSON
 20839 WCR 84
 AULT, CO 80610
 970-371-0276
 jsimpsoncl@aol.com

STERKEL HAMPSHIRE

STEVE & MICHELLE STERKEL & FAMILY
 3752 WCR 7
 Erie, CO 80610
 303-828-9065
 sterkel_livestock@hotmail.com

POWELL CLUB LAMBS

309 Oak St
 Burlington, CO 80807
 719-340-7443
 ldpal7@yahoo.com

DELAWARE

MAPLE LANE SUFFOLKS

TED BOBOLA
 5268 Forrest Ave
 Dover, DE 19904
 302-492-3367
 bobolalams48@aol.com

WOODBIDGE ANIMAL SCIENCE

KAREN BREEDING
 14712 Woodbridge Road
 Greenwood, DE 19950
 302-232-3333
 karen.breeding@wsd.k12.de.us

EDWARD & TINA HOLZ

1150 Morgans Choice Rd
 Camden, DE 19934
 302-697-6678
 edandtinaholz@aol.com

BARBARA & WENDY HRUPSA

6035 Hopkins Cemetery Rd
 Felton, DE 19943
 302-632-8199
 whrupsa@gmail.com

ROBYN HUNTER

176 Rhythem CT
 Newark, DE 19713
 302-797-1213
 robynhunter44@gmail.com

LAKE FOREST FFA

ALISON SCOTT
 5407 Killens Pond Road
 Felton, DE 19943
 424-610-5916
 aescott@lf.k12.de.us

WRIGHT'S STOCK FARM

SCOTT & CHRISTY WRIGHT
 133 Bowdle Dr
 Harrington, DE 19952
 302-362-0831
 sewright@udel.edu

WOODBIDGE FFA

C/O KAREN BREEDING
 14712 Woodbridge Rd
 Greenwood, DE 19950
 302-232-3333
 karen.breeding@wsd.k12.de.us

FLORIDA

TURKEY CREEK FFA

B COLEMAN
 5005 Turkey Creek Rd
 Plant City, FL 33567
 813-928-7239
 buddy.coleman@sdhc.k12.fl.us

SACRED SILENCE FARM

FAITH HUGHES
 PO Box 772791
 Ocala, FL 34477
 352-843-0323
 fehughes@aol.com

DOREEN KISACKY

11060 SE 128th Place Rd
 Ocklawaha, FL 32764
 321-689-0517

VOLUSIA SHOW PRIDE

2290 Mud Lake Drive
 Deleon Springs, FL 32130
 386-956-7893
 lorismith1@bellsout.net

GEORGIA

HALEY COOK

260 Straylott Rd
 Franklin, GA 30217
 706-675-8908

TOM HUBER

1280 MCREE GIN RD
 Watkinsville, GA 30677
 706-769-6721
 mthuber1@yahoo.com

MIKE STAMEY

664 Tucker Hollow Rd
 Calhoun, GA 30701
 706-629-0969
 mrstamey0212@comcast.net

M&M LIVESTOCK

260 Straylott Rd
 Franklin, GA 30217
 706-302-9508
 2livestock08@live.com

IOWA

BRAD AMTHAUER

1175 Vance Ave
 Beaman, IA 50609
 641-821-0301
 bradamthauer@gmail.com

IOWA STATE UNIVERSITY

C/O BEN DRESCHER
 1221 Kildee Hall
 Ames, IA 50011-3150
 515-291-4725
 bdresche@iastate.edu

RON & BONNIE COOK FAMILY

3072 160th Ave
 Mechanicsville, IA 52306
 319-480-6503
 rbcook@netins.net

DEMAG SHEEP CO

Matt Debrick
 16808 C12
 Akron, IA 51001
 506-984-4072
 mdebrick@w-sioux.k12.ia.us

BILL DOHRMANN

PO BOX 502
 Fayette, IA 52142
 563-425-4095
 sdohrmann@iowatelecom.net

MAPLE CREST FARM

GARY ERICKSON
 1896 220th St
 Humboldt, IA 50548
 515-332-1680
 gssheep@ncn.net

AMELIA, LOLA & MYLE FRIMML

597 Marengo Ave
 Marengo, IA 52301
 319-330-9071
 dfrimml@hotmail.com

GREINER CLUB LAMBS

TED GREINER
 25517 330th Ave
 Keota, IA 52248
 641-660-6839
 tedgreiner@gmail.com

HINDMAN CLUB LAMBS

MIKE HINDMAN
 1648 640th Ave
 Albia, IA 52531
 515-491-7829

RICHARD HOCRAFFER & FAMILY

118 14th Ave SW
 Clarion, IA 50525
 515-532-3808
 hokey2008@hotmail.com

GREGG JUNCK

16167 Juniper Ave
 Le Mars, IA 51031

KAMPEN CLUB LAMBS

CHAD KAMPEN
 2076 K Road
 Humboldt, IA 50548
 515-332-5782

KARBER AND KIDS

STEVEN KARBER
 1049 220th St
 Jefferson, IA 50129
 515-386-8216
 sjkarber@netins.net

MIKE KARR CLUB LAMBS

MIKE KARR
 2421 70th St
 Newhall, IA 52315

MATTHEW KENNEDY

17994 Richland Rd
 Kirksville, IA 52566
 979-224-0081
 matt.kennedy147@gmail.com

KIRSCHTEN SHEEP FARM

KERRY KIRSCHTEN
 5060 Jefferson Ave
 Alton, IA 51003
 712-395-0377
 kirschten59@gmail.com

HIGHLAND HAMPSHIRE

GARY KLUG FAMILY
 939 Hazel St
 Harlan, IA 51537
 712-202-4461
 klughihamp@tm.net

KEVIN J LANSING

1553 175th St
 Ossian, IA 52161
 563-532-9115
 klansing@acegroup.cc

LARRY LUITJENS

2351 Mckinley Ave
 Ashton, IA 51232
 712-724-6360
 eiluitjens@frontiernet.net

MHW FARMS

ROBERT & LILA MAHER
 4283 Hwy 117 N
 Colfax, IA 50054
 515-674-3029
 bnlmaher@gmail.com

ROGER NICHOLS

7739 W 117 S
 Prairie City, IA 50228
 515-994-2291

DOA HAMPS

JUSTIN O' BRIEN
 20850 Lincoln Rd
 West Union, IA 52175
 563-422-7056
 wobriendoaox@hotmail.com

RSO LIVESTOCK

ROGER & SHERRY OLSEN
 3769 Little Wall Lake Rd
 Story City, IA 50248
 515-450-2097
 rsoivestock@gmail.com

PEYTON BROS

CHASE & CAEL PEYTON
 19353 170th Ave
 Sumner, IA 50674
 563-428-4656

PULLIN'S HAMPS

RONALD PULLIN
 2185 W Shaulis Rd
 Watterloo, IA 50701
 319-233-2474
 ron.marypullin@mchsi.com

TYLER & TRAVIS PULLIN

C/O DOUG PULLIN
 24751 270th St
 Adel, IA 50003
 515-993-5684
 pullins@msn.com

BLUE ACRE HAMPS

KARLA QUAM-LEO
 3276 150th St
 Jamaica, IA 50128
 515-402-8922
 karlamleo@gmail.com

DIRECTORY CONTINUED

RULE SHEEP

CINDI & TYSON RULE
PO BOX 27
Hawarden, IA 51023
712-422-0344
tysonrule@hotmail.com

SCHMITZ CLUB LAMBS

SSCOTT SCHMITZ
11467 W 76th St N
Rhodes, IA 50234
641-485-9860
ssschmitz@partnercom.net

MATT SWENKA

4614 Merced Street
Des Moines, IA 50310
612-280-4650

STEVE SWENKA

1785 170th Ave
Knoxville, IA 50138
563-428-4656

VANDERLINDEN LIVESTOCK

LES VANDERLINDEN
1785 170th Ave
Knoxville, IA 50138
641-891-5946
vanderlindenlivestock@gmail.com

RONALD WILLWERTH & FAMILY

1142 190th St
Webster City, IA 50595
515-570-2173

WOLF CLUB LAMBS

DAVE WOLF
957 E Ave
Scranton, IA 51462
712-830-3625
wolfpack@netins.net

IDAHO

DIAMOND H LIVESTOCK

TERRY & CAROLYN HOWARD
7680 Palomino Lane
Emmett, ID 83617
208-371-1594
carolyn@dhlivestock.com

SRV HAMPS

JAMES HUMPHREY
607 East HWY 81
Burley, ID 83318
406-533-9807
jhumpy33@hotmail.com

JEWETT CLUB LAMBS

LARRY & DOLORES JEWETT
5670 N 18th E
Mountain Home, ID 83647
208-850-8717
jewettclublambs@live.com

JOHNSTON CLUB LAMBS

KATRINA JOHNSTON
4440 Sw 5th Ave
New Plymouth, ID 83655
208-412-7960
info@johnstonclublambs.com

TEWALT-WILSON LIVESTOCK

AUSTIN, DEAN, LISA & JOSH
TEWALT
930 West Columbia Rd
Meridian, ID 83642
208-861-0927
joshtewalt@clearwire.net

WOLFE FAMILY FARMS

JOEL & REBECCA WOLFE
3900 Sand Hollow Rd
New Plymouth, ID 83655
208-371-3387
rebeccalynnwolfe@gmail.com

MAVENCAMP LIVESTOCK

305 Spring Cove Rd
Bliss, IA 83314
208-490-3126
mavencamplivestock@gmail.com

ILLINOIS

RICHARD ADAMS

10828 W 1000 S Rd
Bonfield, IL 60913
815-228-2903
radams1976@hotmail.com

GRANT & BRYCE BASTING

20645 N 825 East Rd
Carlock, IL 61725
309-376-5881
gbasting@frontier.com

BEDINGER HAMPS

9743 N 1130 E
Catlin, IL 61817
217-260-2341
shpsht@sbcglobal.net

KEVIN BEHRENDIS

2222 N 1000 E Rd
Danforth, IL 60930
815-383-3341
behrendshamps@yahoo.com

LUKE BENJAMIN

15950 West Kennedy Rd
Wilmington, IL 60481
708-738-3895
benjamin@iswan.net

KALEB BIFFAR

2018 Steppig Rd
Columbia, IL 62236
618-616-1824
carrcreekgenetics@msn.com

CHAPIN HAMPS

BILL CHAPIN
5680 E Reed Rd
Coal City, IL 60416
815-954-5129
wchapin@mccrone.com

JOSEPH CLARKE

306 Busse Road
Marengo, IL 60152
815-545-8548
jclarke88@yahoo.com

RONALD COULTAS FAMILY

453 Winchester Glasgow Rd
Winchester, IL 62694
217-473-6637
ron@e-co-op.com

JIM DAVIS

24001 N 1900 E
Odell, IL 60460
815-228-5967
jbdavis@maxwire.net

MICHAEL DAVIS

PO BOX 37
Polo, IL 61064
815-946-2560
mdaviscic@netscape.net

DEAKIN FAMILY FARMS

GREG AND COLIN DEAKIN
11191 E Cameron Rd
Cuba, IL 61427
309-338-3294
greg.deakin@otmail.com

ELLERBROCK CLUB LAMBS

BRAD & JEFF ELLERBROCK
13383 E 2000th St
Atkinson, IL 61235
574-967-3091
brad.ellerbrock@agrigo.com

WILLIAM & CONNIE FULTON

1508 State Rt 37
Kell, IL 62853
618-367-2364
fulton9504@gmail.com

RYANN GANN

11578 N Mt Morris Rd
Leaf River, IL 61047
815-979-3117
gannfarms@hotmail.com

HAILEY GEHLBACH

203 W Joseph St
Roanoke, IL 61561
309-360-2479
lrghehlbach@hotmail.com

KALEIGH HALLERAN

6429 Old Red Bud Rd
Waterloo, IL 62298
618-939-4511
ahjh@htc.net

HANSON FARM

ED HANSON
3034 N 700 E Rd
Clifton, IL 60927
815-383-2587
hanson.farms@yahoo.com

BARB AND LARRY HARMS

27638 E 2450 N Rd
Lexington, IL 61753
309-365-3381
hrmsshwlms@prairie.net

HORNER SHOW LAMBS

DICK HORNER
1119 E. 1515 Ave.
Vandalia, IL 62471
618-292-7627
hornershowlambs@hotmail.com

HUNTER HAMPS

JASON & NICK HUNTER
350 W Penn Ave
Roseville, IL 61473
309-337-0389

KASEY HAMPSHIRE

NELS KASEY
501 WE Buckeye
Ashmore, IL 61912
217-349-8705
nelskasey@greatheartseed.com

KENDRICK HAMPS

DAN KENDRICK
712 W 3Rd St
Vermont, IL 61484
309-221-5568
kendrickdorset@yahoo.com

KORY KLEINERT

2873 N 1600 E
Clifton, IL 60927
815-383-0962

KLEINERT HAMPSHIRE

MIKE KLEINERT
2873 N 1600 E
Clifton, IL 60927
815-383-0962
mike@kleinertshampshires.com

SARAH LUESCHOW

19520 S Port Rd
Elmwood, IL 61529
309-256-3115
sllueschow@hotmail.com

JESSE LUESCHOW

19520 Southport Rd
Elmwood, IL 61529
309-256-3115
slueschow@dunlapcusd.net

SHILOH LUESCHOW

19520 Southport Rd
Elmwood, IL 61529
309-256-3115
slueschow@dunlapcusd.net

MEYER HAMPSHIRE

CHRIS MEYER
971 Arenzville Rd
Arenzville, IL 62611
217-473-3953
megan_meyer@hotmail.com

DWAYNE MILNER

7170 RT 111
Piasa, IL 62079
618-535-4169
dmilner100483@yahoo.com

TULLY ACRES

Victoria Mohr
PO BOX 884
Lomax, IL 61454
217-989-3000
victoria@tullyacres.

MUMM HAMPSHIRE

Jason and Megan Mumm
49 CR 1300 N
White Heath, IL 61884
217-377-2073
meganmumm@hotmail.com

JOSH MUNSTERMAN

2111 N 1700 E Rd
Watseka, IL 60970
815-383-6311
munstermanjosh@hotmail.com

NICHOLS SHEEP FARM

CRUZ NICHOLS
26016 Moore Lane
Jerseyville, IL 62052
859-612-7175
slmoore93@gmail.com

GRESHER-FISHER SHOW STOCK

RANDI GRESHER & NICOLE
FISHER
2111 Cedar Ave
Hanover Park, IL 60133
630-837-7227
gvessi@sbcglobal.net

NIEMEIER HAMPSHIRE

EDWARD NIEMEIER
4704 Blackburn Rd
Edwardsville, IL 62025
618-656-7273
keithniemeier@gmail.com

TESSA & CONNER ORTMAN

Kokomo, IL 46402
302-593-1213
keortman@aol.com

LUCAS PARR
33053 E Cr 700 N
Mason City, IL 62664
217-871-4555

PARR HAMPSHIRE
MARIE PARR
33425 E Cr 1000 N
Mason City, IL 62664
217-871-4555
rparr@frontier.net

PAUL HAMPSHIRE SHEEP FARM
STEVE & EVAN PAUL
20500 N 1800th Rd
Bushnell, IL 61422
309-255-2671
pauls@bushnell.net

CHARLES RAMSDELL
1622 Franklin Rd
Franklin Grove, IL 61031
815-456-2453

REEL CLUB LAMBS
SCOTT AND SHARON REEL
695 N 3859th Rd
Mendota, IL 61342
815-994-1998
reelclublambs@gmail.com

CLEAR VIEW FARM #2
RYON RICHARDSON
301 Shell Hammer Rd PO Box 90
Harmon, IL 61042
815-901-1280

MARK & BRADLEY SCHROCK
PO BOX 38
Congerville, IL 61729
309-369-7173
schrock12@hotmail.com

PHANTHOM HILLS FITTING
ETHAN, ANNIE, TY & ACE SMITH
PO BOX 64
Windsor, IL 61957
phantomhills1@gmail.com

SUZANNA STORMS
859 Washburn Rd
Washburn, IL 61570
309-248-7823
suzanna.storms@gmail.com

CHAD SWALVE
4996 Prairie Road
Freeport, IL 61032
815-541-0720
coleswalve00@gmail.com

LILIAH & CONNER UNGER
6447 S 5000 W Rd
Chebanse, IL 60922
815-592-6456
nora@poolcoverpros.com

DAVID VAN CLEAVE
172 South St
Seneca, IL 61360
815-482-7484

JIM VAN CLEAVE
BOX 478
Seneca, IL 61360
815-357-8196

JON VAN DYKE
544 Eagle Rd
Louisville, IL 62858
217-259-6206
vandyke@wabash.net

CLEAR VIEW FARM
JOE AND SCOTT VIVIAN
1796 Lee Center Road
Amboy, IL 61310
815-632-7254
WOLLERMAN SHOW LAMBS
AUSTIN WOLLERMAN
2318 N 400 St
Bingham, IL 62011
618-367-3174
awollerman@gmail.com

WRIGHT FAMILY FARMS
16732 645 E St.
Sheffield, IL 61361
815-454-2089

INDIANA
SCOTT ALEXANDER
1282 N 60 S
Winamac, IN 46996

MICHAEL ALLYN FAMILY
5955 Indian Mound Rd
Mount Vernon, IN 47260
812-598-7591
mdallyn1@gmail.com

SHANE ASHTON & FAMILY
484 E St Rd 28
Alexandria, IN 46001
765-635-7355
sashton@carterlumber.com

JERRY BARNETT
7247 S Us Hwy 421
Kirklin, IN 46050-9778
765-271-9996
jlbarnetthamps@att.net

WAYNE BELDEN
5061 N US Hwy 231
Rensselaer, IN 47978
219-869-1851
wbelden@infarmbureau.org

TYLER & TRENT BURNS
232 W 800 S
Bunker Hill, IN 46914
765-327-1478

SPENCER CARSON
12310 E 266th St
Arcadia, IN 46030
317-946-4450
spencercarson38@gmail.com

CAUDILL FARM
MARANDA & RYAN CAUDILL
11931 E CT Rd 800 N
Hope, IN 47246
317-508-3176
mwestroberts@hotmail.com

DARREN CLOUSE
7641 N 1000 East
Sheridan, IN 46069
765-412-2453
darren.clouse@yahoo.com

MAX COURTNEY
7436 S 300 W
Shelbyville, IN 46176
812-343-3710

CKC LIVESTOCK
JIM, CARSIN, KIRSTEN & COLE CUMMINGS
6113 W CR 350 S
COASTESVILLE, IN 46121
317-539-4967
cjimandtonya@tds.net

FRED CURREY FAMILY
7406 N 425 E
Alexandria, IN 46001
765-623-8806
curreysclublambs@
zigwireless.com

DANIELS CLUB LAMBS
GARY DANIELS
4924 E Division Rd
Portland, IN 47371
260-726-8639
bldaniels@bright.net

STEVEN J DIMITT
746 S Granite Drive
Logansport, IN 46947
765-860-9188
stdimitt@gmail.com

MEGAN, COLLIN & ELI DOWNING
4491 S 460 W
Vallonia, IN 47281
317-373-2828
mdown1675@gmail.com

EINHAUS CLUB LAMBS
TYLER EINHAUS
5451 West 1050 North
Osgood, IN 47037
812-614-9300
tylerinhouse@gmail.com

RON & DWIGHT DUZAN
5875 N Red Oak Dr
Greenfield, IN 46140
317-326-4166
dwightandron@aol.com

AMANDA & JAKE FELLER
4290 W 650 N
Crawfordsville, IN 47933
765-275-2211
fellers@wabash.edu

JERRY FLANDERS
2355 Pleasant
Noblesville, IN 46060
317-773-3232
vipdvm2355@gmail.com

GRANT & GARRETT FRIESE
8398 E 450 S
Carthage, IN 46115
317-586-1728
kefriesen@yahoo.com

PEARSON HAMPSHIRE
CAREY FULWIDER
1557 W 281st STQ
Sheridan, IN 46069
317-496-0914
cfulwider@sbcglobal.net

MORGAN & MADISON HAUGER
7287 W 50 N
Connersville, IN 47331
765-561-1948
lmhauger@hotmail.com

KAITLYN & JOEY HICKS
1955 N 100 W
Franklin, IN 46131
317-709-0321
rjhicks76@gmail.com

TOMMY HOBBS
11302 N Bob Wolfe Rd
Oaktown, IN 47561
812-881-0160
tommyhobbs5@gmail.com

SAVANNAH HUBBARD
5570 N SR 7
Madison, IN 47250
812-265-5144
mmahoneyhubbard@yahoo.com

AARON JENNINGS
620 W 625 S
Lafayette, IN 47909
979-204-7952
hiredhandsouthdowns@
hotmail.com

BLACK MAPLE FARM
MICHAEL & LACEY JONES
3924 N 450 E
Rochester, IN 46975
574-721-2159
mjones@argos.k12.in.us

ROBERT JONES
4159 Braysville Rd
Spencer, IN 47460
812-876-5829

RYAN, ALLISON & MEGAN KELLY
23725 CR 38
Goshen, IN 46526
574-862-1892
bakkelly@hotmail.com

TIM KENDALL
1277 S 600 W
Shirley, IN 47384
765-620-7579
timkendall7579@icloud.com

ADVANCING FARM & FAMILY
ALAN & DAWN KESSLER
3794 S 550 W
La Porte, IN 46350
219-898-5026
advfarm@aol.com

VIKING LAMB LLC
TERRY KNUDSON
Viking Lamb Llc
1678 E Freeport Rd
Morristown, IN 46161
812-871-5700
vikinglamb@iquest.net

JEAN LAHRMAN
13010 Wappes RD
Churbusco, IN 46723
260-433-5124

CAMDEN YAKE & LANDREY KRIEGER
9438 N 100 E
Washington, IN 47501
812-444-9071

COLTON, CAMERSON & CAILEY MARKLEY
4315 17 B RD
Tippecanoe, IN 46570
574-952-6572
brent.markley@gmail.com

TESSA MATTINGLY
4641 E County Road 250N
Frankfort, IN 46041
765-978-0237
mattingly@att.net

4 M FARMS
JUSTIN & APRIL MATTOX
2377 E 600 N
Greenfield, IN 46140
317-538-5240
jmattox50@yahoo.com

DIRECTORY CONTINUED

MCTAGGART'S HAMPSHIRE

ROBERT MCTAGGART FAMILY
10509 E 500 S
Otterbein, IN 47970
765-490-3298

LAINY, ANSLEY & HADLEY MENDENHALL

1557 West 281st St
Sheridan, IN 46069

KYLA, KADE & KINSEY MENNEN

7123 E CR 250 S
Walton, IN 46994
574-735-3719

lisamennen@aol.com

MENNEN CLUB LAMBS

ALVIN MENNEN & FAMILY
3188 E CO Rd 500 S
Walton, IN 46994
574-722-2740

mennenclublambs@aol.com

SGM FARMS

SIDNEY & SHARI MILLER

1008 E 14th St
Rochester, IN 46975
574-65-1129

millersidney16@gmail.com

JOHN MROZINSKI

6992 E 700 N
New Carlisle, IN 46552
574-532-0792

jmozinski@yownofnewcarlisle.com

DAN & KRIS MYERS

833 E 350 S
Logansport, IN 46947
574-355-6840

dkmeyers1230@comcast.net

TRIPLE P HAMPSHIRE

RICHARD PARKER & FAMILY
1761 E St Rd 234
Fortville, IN 46040-9725
317-326-2821

ra.parker@myninestar.net

MICKEY PARKS

8864 N Old Sr 55
Wingate, IN 47994
765-225-7340

mpclublambs@yahoo.com

CHARLES PAXTON

959 Marshall Rd
Rockville, IN 47872
765-592-3954
sherripaxton@sbcglobal.net

PERRY CLUB LAMBS

DANIEL PERRY

10253 S 400W 900
Montpelier, IN 47359
765-348-7806

rockbottom@onlyinternet.net

PLANK SHEEP CO

TAYLOR PLANK

5184 E SR 218
Walton, IN 46994
765-564-3481

plankt@delphik12.in.us

KELVIN PLUIMER & FAMILY

6451 N 900 E
Van Buren, IN 46991
765-934-3873

kjplumer@embarqmail.com

PLUMMER FARMS

LEVI & MAKAYLA PLUMMER
200 N 400 W
Bargersville, IN 46106
317-422-8104

plumhampshires@gmail.com

STANLEY POE & SONS

2213 W St Rd 144
Franklin, IN 46131
317-600-3252

poehamps@yahoo.com

POLING SHOW SHEEP

WHITNEY & NICHOLAS POLING
7259 N 400 E
Union City, IN 47390
765-748-4818

polingshowsheep@gmail.com

JON & JONI POUNDS & FAMILY

4813 N Main St
Terre Haute, IN 47805
812-870-71-7161
joni.pounds@gmail.com

JACKSON, COLE & BRYNN RITTER

697 W 950 N
Forville, IN 46040
mattandmeganritter@gmail.com

CALE & TESSA ROBERTSON

58 E 375 N
Reynolds, IN 47980
765-412-3697

joshandroxie@gmail.com

MARK & KARLA ROESKE & DAUGHTERS

6882 S CR 400 E
Walton, IN 46994
574-721-0033

roeske@icloud.com

RUDICEL CLUB LAMBS

CRAIG, JASMINE & BRYCE
RUDICEL

8720 E 900 N
Twelve Mile, IN 46988
574-721-7308

herudicel@yahoo.com

BJ & KYLE RULE & FAMILY

5111 W 300 S
Lafayette, IN 47909
317-345-4600

rule_12@hotmail.com

SILVERCREEK FARMS

MICHELLE & BILLY WADE &
SCOTT FELLER

11956 W 700 S
Jamestown, IN 46147
503-931-6827

wadewesthamps@yahoo.com

SHAFFER SHOW STOCK

TERRY SHAFFER

PO BOX 13
Plainville, IN 47568
812-444-9071

trryshfr@yahoo.com

JASPER & IRELAND SHUCK

8330 S 300 W
Geneva, IN 46740
765-438-1804

jasonshuck.family@gmail.com

KAITLYN & BRETT SLACK

13060 N Meridian Rd
North Manchester, IN 46962
574-339-9073
verhaegedorsets@aol.com

TOM SLACK

1022 W 1300 N
Manchester, IN 46962
260-982-8714
lvmysheep@aol.com

JOHN SLENTZ

5870 CTY RD 36
Butler, IN 46721
260-908-4177
jrslentz@hotmail.com

ROBERT SLINGER III

146 E 900 S
Warren, IN 46792
260-375-3758

THOMAS SMALL FAMILY

6862 South Co Rd 400 E
Walton, IN 46994
574-626-2993

tljas@northcc.net

WAYNE SNIDER

66399 Cr 19
Goshen, IN 46526
574-535-5748

RILEY, ELAINA & ALEX SMITH

2969 W 1250 S
Kentland, IN 47951
815-383-9166

smithshow@gmail.com

WAYNE SNIDER

66399 CR 19
Goshen, IN 46526
574-535-5748

ROSS SPITZNAGLE

10262 W 100 S
Dunkirk, IN 47336
765-414-8035

bullspit09@hotmail.com

SBS HAMPSHIRE

Breanna, Samuel & Kallin Strome
5706 N Piqua Rd
Decatur, IN 46733

260-233-7051

breannastrme@gmail.com

MACY SWOVELAND

7608 W 400 N
Farmland, IN 47340
765-578-1282

swovelandmacy@yahoo.com

CLAYRIDGE SHEEP CO

David Taylor
4229 W 50 S
Portland, IN 47371
260-729-1212

dtaylor@harvestlandcoop.com

RON & KARLA TERRELL

1564 W Co Rd 200 N
New Castle, IN 47362
765-256-2208

rterrell51@yahoo.com

SILVER DOLLAR FARMS

TAD THOMPSON
1564 W Co Rd 200 N
New Castle, IN 47362

765-891-8442

thompson.tad@gmail.com

TRUSTY FAMILY PARTNERSHIP

MARCIA TRUSTY

4426 E Dayhuff Rd
Mooreville, IN 46158
317-831-8426

marciatrusty@yahoo.com

WILLIAM VAN METER

8489 N West Shafer
Monticello, IN 47960
574-278-7340

JASON WALKER

2150 E 1100 S
Hartford City, In 47348
812-243-9294

walkerfarmsin@gmail.com

WF CLUB LAMBS

MATTHEW WILLMANN

7681 E 100 S
Hartford City, IN 47348
765-330-1099

mkwillmann@aol.com

EDGE CLUB LAMBS

11300 N Archer St
Rosedale, IN 47874
765-617-0224

dedge@farmjournal.com

BRISTOL RIDGE HAMPSHIRE

PO BOX 234, 107 S Hill St
Summitville, IN 46070
675-376-9205

kjeffries10@yahoo.com

HILL/HOEING SHOW STOCK

1826 East CO Road 100 South 6
Greenburg, IN 47240
812-593-4454

BEELER FARMS

JASON & JENNI BEELER

1085 Grandma Brown Rd
Mitchell, IN 47446
812-583-1888

beelerfarms2016@yahoo.com

KANSAS

CARLEIGH, COLTEN & COHEN ABELDT

307 E Franklynn St
Herington, KS 67449
785-258-4240

MACKENZIE & CARSON CUNNINGHAM

841 S Poplar
Ottawa, KS 66067
913-449-2706

cunninghamfamily2003@gmail.com

STACEY DUBOIS

39290 W 295th St
Paola, KS 66071
913-294-8460

duboisclublambs@hotmail.com

EBERT SHEEP FARM

JEFF EBERT

10015 Flush Rd
St George, KS 66535
785-458-9174

ebertsheepfarm@gmail.com

WARREN & PAM FINDER

14715 W Maple Grove Rd
Kingman, KS 67068
620-532-1327

finderhampshires@gmail.com

PAUL GALLE

2259 Cheyenne Rd
Moundridge, KS 67107
620-245-4180

HEWLETT CLUB LAMBS

ED HEWLETT
4983 E Hwy 160
Independence, KS 67301
620-331-1475
ech@terraworld.net

HOBBS CLUB LAMBS

JOE & MEGAN HOBBS
7428 Nw 12th St
Newton, WKS 67114
405-612-8650
hobbsshowlambs@yahoo.com

HOCKMAN FARMS

TY HOCKMAN
610 N 8th
Hill City, KS 67642
785-421-7109
tyrh@hotmail.com

AUDRINA, FAITH, ZACHARY & REID MARCY

1037 W CO RD P
Leoti, KS 67861
620-376-8712
brandy.marcy@leoti.org

MORGAN, SAMANTHA & RYAN MCCLURE

5490 W 76th Ave
Manhattan, KS 66503
785-477-2494

JUDD & JERILYN NELSON

22549 C RD
Soldier, KS 66540
785-364-7479
trailane@jbtelco.com

KASHEN & BRECKEN NELSON

PO Box 36
Tribune, KS 67879
620-367-8944
nycolenelson@hotmail.com

TRAVIS, TYLER & ALICIA NELSSSEN

7234 Tuttle Creek Blvd
Manhattan, KS 66503
785-776-1407
jnellsen@ksu.edu

MEGAN NEULAND

2793 Clark Rd
Richmond, KS 66080
785-418-3168
newland_hamps@yahoo.com

NORMAN & MARTHA PILGER

2135 Rd 20
Wallace, KS 67761
785-852-4102
mkpilger@hotmail.com

BRAYDEN & KASEN ROBINSON

9705 N Lakeside Rd
Garden City, KS 67846
620-338-7041

DUSTIN & REBECCA ROOKSTOOL

9377 Broderick
Wamego, KS 66547
785-456-4096

rebecca.rookstool@alumni.washburnlaw.edu

RUNDEL LIVESTOCK

CASE RUNDEL
3045 West Cottonwood St
Colby, KS 67701
785-443-0590
rundelfarms@live.com

BRANDON, DEREK & LAKIN STAHEL

6780 E 149th St
Overbrook, KS 66524
785-207-1386
curtisstahel@gmail.com

TWO OF A KIND FARMS

ERIC & JENNIFER STRECKER
836NW River Valley Rd
Towanda, KS 67144-9171
316-305-5379
ericbmf316@yahoo.com

RYAN STRUNK

8711 SE 12th St
Newton, KS 67114
316-833-0887
carolynstrunk@ghhwesleymc.com

LOGAN & JANSYN VAN HORN

2002 J Rd
Garfield, KS 67529
620-569-2413
vanhorn@gbta.net

TED VAN HORN

2002 J Rd
Garfield, KS 67529
620-205-9486
vanhorn@gbta.net

DREIER-LAROSH CLUB LAMBS

9800 Knox Drive
Overland Park, KS 66212
913-526-8160
mdlarosh@gmail.com

HAYS BROTHERS

3427 Linn Rd
Perry, KS 66073
785-438-0339
hays.m@hotmail.com

O'BRIEN SHOW LAMBS

23050 Boonesboro Rd
Walnut, KS 66711
620-717-1516
cortneylobrien@gmail.com

KENTUCKY

CHARLIE & HEIDI CASTLE

5000 Boonesboro Rd
Winchester, KY 40391
859-556-0111

TERRADISE FARM

CAMPBELL, CORBIN, CLARK,
DOUGLAS, & ELIZABETH COYLE
1374 Quirks Run Road
Danville, KY 40422
859-583-0816
1503@medicineshoppe.com

DOUBLE F CLUB LAMBS

STEFAN & ENDRE FINK
1590 Boonesboro Rd
Winchester, KY 40391
859-771-8441
doubleflamb@gmail.com

WILLIAM GINN

2368 Palmyra Rd
Bedford, KY 40006
502-663-1233
ginnfarms@yahoo.com

RYAN HALLIGAN

9375 Mount Sterling Rd
Winchester, KY 40391
502-320-8055
ryan.c.halligan@gmail.com

HANCOCK HAMPSHIRE

MIKE HAMCOCK
1255 Estesburg Rd
Eubank, KY 42567
606-379-6575
mike100@windstream.net

METZGER'S HAMPSHIRE

BRUCE METZGER
3965 Old Frankfort Pike
Versailles, KY 40383
859-846-4721
brmetzger444@gmail.com

TAYLOR STOCK FARM

TAYLOR FAMILY
721 Jayna Lane
Salem, KY 42078
270-519-2235
taylorstockfarm@tds.net

WALKER & CAMDYN TINGLE

2368 Palmyra Rd
Bedford, KY 40006
502-221-0641
ginn_tingle@yahoo.com

UNIVERSITY OF KENTUCKY

1171 Midway Rd
Versailles, KY 40383
859-873-6587
frank.berry@uky.edu

KLAY & ELLIE VAN SICKLE

535 Duncan Lane
Auburn, KY 42206
ANTIQUITY RIDGE FARM

SCOTT VAN SICKLE
535 Duncan Lane
Auburn, KY 42206
270-792-7173
antiquityridgefarm@gmail.com

VAN SICKLE HAMPSHIRE

RICHARD VAN SICKLE
284 Cabin Creek Rd
Winchester, KY 40391
859-744-8747

HALEIGH & TJ YAZELL

1267 Millersburg Rd
Paris, KY 40361
859-340-2747
lyazell2@roadrunner.com

LOUISIANA

WILLIAM APPEL

101 Sena Drive
Metairie, LA 70005
504-578-0055
billy@appeal@sharpelectric.com

ULAND & SONYA GUIDRY

1474 HWY 384
Lake Charles, LA 70607
337-532-3180
sguidry@mbklaw.net

CASTRO CLUB LAMBS

3616 HWY 308
Napoleanville, LA 70390
225-268-6214
castroclublambs@hotmail.com

MASSACHUSETTS

FOUNDRY ACRES HAMPSHIRE

C DONALD CALL
964 Mohawk Trail
Shelburne Falls, MA 01370
413-625-2436
doonyc@netscape.net

LYNDA HUTCHINGS

41 Steven St
Hanson, MA 02341

KATELYN PARSONS

121 Mill Valley Rd
Hadley, MA 01035
413-584-0629
katelyn.parsons@okstate.edu

SANDRA VARDO

41 Steven St
Hanson, MA 02341
781-290-6360
moonlightacre@hotmail.com

MARYLAND

CORINNE DARRAGH

8423 Ramsburg Rd
Thurmont, MD 21788
240-271-7091
corinne.ransom@hotmail.com

DALTON MACKENZIE

11330 D Clemsonville Road
Union Bridge, MD 21791
443-974-7114
dalton.mackenzie@yahoo.com

STEVE & TYLER MAJCHRZAK

3745 Bradley Rd
Federalsburg, MD 21632
410-463-5476
steve@hoffirr.com

MAINE

BIRCH HILL HAMPSHIRE

M D ANDREW
64 Flaggy Meadow Rd
Gorham, ME 04038
207-318-9248

RACHEL CARTER

417 Main St
Richmond, ME 04357
207-512-6672
racarter1025@gmail.com

MICHIGAN

ANGEL HAMPSHIRE

DOUG & MOLLY ANGEL
62020 MT Vernon
Washington, MI 48094
248-652-7256
dangel123@comcast.net

BUCKHAM FARMS

THOMAS BUCKHAM
6508 W R Ave
Schoolcraft, MI 49087
buckhamt@gmail.com

DIRECTORY CONTINUED

GORDENEER HAMPSHIRE

JEFF GORDENEER FAMILY
607 N Ionia Rd
Vermontville, MI 49096
517-726-1309
tgordeneer@yahoo.com

ELECTRA FARM

EARL HELLER
20640 Sager Rd
Chelsea, MI 48118
734-475-2681

CALLIE HIGH

19315 Church St
Marcellus, MI 49067
269-535-0701

JUDY MOORE

11989 Hinman Rd
Eagle, MI 48822
517-626-6012
jmoore@2farmconnect.net

JUDY RUGGLES

15839 Floating Bridge Rd
Three Rivers, MI 49093
269-718-9683
four_r_ranch@juno.com

ROWEN OAK FARM

LEAH SHERIDAN
2240 Ives Rd
Leslie, MI 49251
517-749-7976
leah@sheridanauctionservice.com

PAUL SMALLEGAN

3453 Perry Street
Hudsonville, MI 49426
616-309-7561
psmallegan26@gmail.com

WILLOW CREEK SHOW LAMBS

JIM VANDERKOLK
3679 36th St
Hamilton, MI 49419
205-495-0805
jvanderkolk4@yahoo.com

LELAND WHEATON

2297 W Vermontville Hwy
Charlotte, MI 48813
517-203-9911
brant.wheaton@gmail.com

MINNESOTA

RACHEL & STEVE ANDERSON

2732 170th Ave
Mora, MN 55051
612-834-6567
scenerysteve@yahoo.com

BRUCE BAKKEN & FAMILY

29557 St Hwy 13
Hartland, MN 56042
507-845-2113
bjbakken54@gmail.com

CREEKSIDE FARMS

ADAM & SRAH BENKER
9415 35th St NE
St. Michael, MN 55376
612-202-3232
adam.benker1973@gmail.com

BOBENDRIER BOYS

BOBENDRIER FAMILY
1351 Hwy 75
Pipestone, MN 56164
507-215-0334
shebob@svtv.com

BOBENDRIER HAMPSHIRE

1607 90th Ave
Pipestone, MN 56164
507-825-4072
jcbobendrier@gmail.com

KENNETH BOYER

5300 Hwy 63 S
Rochester, MN 55904
507-282-3776
frigidfold@aol.com

DALE CARTER FAMILY

26708 Cr 10
Starbuck, MN 56381
320-239-4962
carteracres@ucinet.net

PINE LAWN FARM

MIKE CASKEY FAMILY
1222 171st St
Holland, MN 56139
507-347-3229
mccaskey@woodstocktel.net

MARK CHRISTENSEN FAMILY

1561 250th Ave
Tyler, MN 56178
507-828-9162
mchris@frontiernet.net

PROMISE KEPT FARM

TIM COSS & FAMILY
207 E Water St
Cannon Falls, MN 55009
507-202-0039
timkcoss@frontier.net

DEE BROTHERS, LLC

GRAHAM & EVAN DEE
27285 Galaxre Ave
Farmington, MN 55024
612-207-1907
graham@deebrothers.com

RANDY DOMBEK FAMILY

2422 290th St
Ivanhoe, MN 56142
507-530-5938
rdombek@hotmail.com

DON & DEB DREWRY & FAMILY

3105 250 St E
Farmington, MN 55024
651-894-3466
don.drewry@frontier.com

EGGINK'S HAMPSHIRE

RODNEY & RYAN EGGINK
8291 185th Ave
Becker, MN 55308
763-234-7419
rodfantasyfarm@gmail.com

MY MINNESOTA FARMER

BRAATZ FAMILY
35100 191st Ave
Montgomery, MN 56069
507-400-5472
braatzfarm@gmail.com

ROBERT FINNESGARD & FAMILY

19563 Cty Rd 11
Spring Grove, MN 55974
507-498-5798
bfinn@springgrove.coop

THOMAS FRAME & SONS

16465 Paul Ave
Worthington, MN 56187
507-376-4928
aframe002@frontiernet.net

FRANZ FARMS

TODD & M K FRANZ
34153 520th Ave
Bingham Lake, MN 56118
507-822-1671
mkfranz@frontiernet.net

HARVEY FARMS

MIKE HARVEY
28751 CO Rd 33
Lake City, MN 55041
651-212-1298
princharv@gmail.com

HERRIG FAMILY HAMPSHIRE

677 State Hwy 267
Slayton, MN 56172
507-836-6311
jakeherrig@yahoo.com

GOLDEN LANE FARMS

GLEN HOFF FAMILY
1713 110th Ave
Perley, MN 56574
218-861-6722
ghoff@loretel.net

JOSH KIRCHENBAUER

8166 72nd St SE
Clear Lake, MN 55319
320-292-6598
joshua.kirchenbauer@gmail.com

JAMES KIRCHENBAUER

8166 72nd St SE
Clear Lake, MN 55319
320-290-4879
james.kirchenbauer@gmail.com

ROBERT KOEHLER & FAMILY

1712 111th St
Slayton, MN 56172-1963
507-836-8319
koehl1009@umn.edu

TIMBERLAKE HAMPS

JUSTIN & MARNIE LARSEN
34710 CR 120
Frazee, MN 56544
218-841-3939
hunthebest1@gmail.com

REID MERRILL

2163 250th St
Canby, MN 56220
507-829-4319

JEWEL LANE FARM

FOSTER MOONEY
9710 Jewel Lane
Chisago City, MN 55013
651-257-5079

RICHARD NELSON

22132 Linden Park Rd
Pelican Rapids, MN 56572
701-215-2170
crimsoncreek@cox.net

OAK MEADOW SHEEP

BRUCE NICKEL
30799 Cсах 34
Litchfield, MN 55355
320-693-7953
bcnickel@hotmail.com

TRIPLE D HAMPS

DYLAN, DANIELLE & DEREK PRATT
20251 400th St
Clarissa, MN 56440
320-219-8942
ballroom@eaglevalleytel.net

JERRY QUAM & FAMILY

8533 Co 30 Blvd
Wanamingo, MN 55983
507-251-2650
rex.quam@riverland.edu

A FEW BIRDS & A HERD

ADEL RAGHEB
3370 County Road 10 N
Watertown, MN 55388
763-742-3522
vonraghebgds@gmail.com

NORTHERN STARR LIVESTOCK

JEFF REPASKY
9426 Jacobsen Trail
Lonsdale, MN 55046
612-282-7782
nstarrlvk5@aol.com

RCR SHOW LAMBS

DAVID RESCH
5714 100th St
Glencoe, MN 55336
952-449-1793
rcrshowlambs@hotmail.com

MERCEDES LADIES

MERCEDES ROWLAND LYNN
1462 180th St
Perley, MN 56574
701-361-8530
mercedesl_09@hotmail.com

GENE & MARCI SANFORD

12529 Canby Ave
Faribault, MN 55021
507-645-4989
mgsanford99@gmail.com

RAM'N ACRES

RODNEY SCHELLER
3646 County Rd 37 NE
Monticello, MN 55362
612-386-7479
rodscheller@gmail.com

EUGENE SCHERMERHORM FAMILY

40012 560th Ave
New York Mills, MN 56567
701-361-9324
lovetoshowsheep@yahoo.com

AUSTIN SCHIEFELBEIN

35359 732 Ave
Kimball, MN 55353
320-398-8400
rgaaab@meltel.net

SCHULTZ'S SHEEP

CHARLIE SCHULTZ
13503 Hwy 28
Swanville, MN 56382
320-630-4865
cjschultz@wisper-wireless.com

SCOTT SIK

74777 360th Ave
Round Lake, MN 56167
507-360-4346
scottsik@yahoo.com

SAMANTHA STONE

2075 Jade Street
Mora, MN 55051
320-496-3374
1998sstone@gmail.com

TRISTAN, FABRIEL & MICAH THOMPSON

897 137th Ave
Spicer, MN 56288
320-905-2428
jmmeyer89@hotmail.com

UNIVERSITY OF MINNESOTA

225 E Haecker Hall
St Paul, MN 55108
612-624-7497
rozeboom@umn.edu

WAMBEAM HAMPSHIRE

27707 880th Ave
Austin, MN 55912
507-437-1506
dwambeam@smig.net

WANNARCA HAMPSHIRE

STEVE WANNARCA
2973 95th St
Blue Earth, MN 56013
507-464-3431

HEATH WILLIAMS

12191 431st Ave
Mabel, MN 55954
507-450-7107
williamsshowlambs@gmail.com

DK LIVESTOCK COMPANY

KAYLEE, KATHERIN & DEREK
1901 Private Dr Apt 202
Crookston, MN 56716
320-219-8942
dklivestockco@gmail.com

CEDAR CREEK HAMPS

2231 Robich Rd
Ely, MN 55731
515-229-7728
hampshires.jb@gmail.com

DEW DROP FARMS

38118 510th Ave
New York Mills, MN 56567
218-639-8484
dewdrop@lakesplus.com

DEBOEHM FAMILY CLUB LAMBS

32418 750 Ave
Racine, MN 55967
507-533-8310
courtneyobrien@gmail.com

MISSOURI

BAUMANN FAMILY

14063 St Rt Dd
Savannah, MO 64485
816-324-4386
gary213@centurytel.net

CHECKERIDGE

LELAND BROWNING
54 Se Co Rd 16335
Appleton City, MO 64724
660-924-1090
checkeridge@embarqmail.com

EMALEIGH & ABBY CLONTS

10236 Union Drive
Stark City, MO 64866
417-393-8894
clontsfarms@yahoo.com

JERRY & BARBARA CREASON

7322 SE Apache Rd
Cowgill, MO 64637
816-863-4484
jerrywcreason@gmail.com

E6 FARMS

LIBBY & ALEX ENDICOTT
701 E Forrest
Gallatin, MO 64640
660-663-4224
aliciaendicott@yahoo.com

KASEY & ABILENE GATSON

31310 Bluejay Rd
Vandalia, MO 63382
573-594-3247
gatsonfarms@gmail.com

HAND HAMPSHIRE

HAND FAMILY
12918 Maness Rd
De Soto, MO 63020
314-303-1141
lwhand5@yahoo.com

ADAM & TRENA HARKER

12402 Valley View Rd
Mountain Grove, MO 65711
417-254-1731
aharker22@hotmail.com

RAY-KAY FARMS

ZACHARY HAYTER
459 E 550th Rd
Walnut Grove, MO 65770
417-788-2637
raykay70-72@hotmail.com

DEAN & CONNIE HOUGHTON

5555 SW Peak Rd
Polo, MO 64671
816-863-0043
houghtongd@gmail.com

UPTOWN HAMPS

MATT & KATE LAMBERT
22225 Glade Rd
Laclede, MO 64651
660-541-1480
uptownfarms@hotmail.com

RODGER & THEILA LUETJEN

1110 South Fowler
Cole Camp, MO 65325
660-221-4921
rodgerluetjen@embarqmail.com

STEVEN & NANCY MCCULLY

18297 Boulder Dr
Harris, MO 64645
660-292-1595
nmccully@smithfield.com

PLAZA HAMPS

BRAD PAYNE
13406 8 RT MM Southeast
Agency, MO 64401
630-688-2583
brad.payne65@gmail.com

SCHUTTER CLUB LAMBS

DAVID SCHUTTER
2500 State Route P
Kirksville, MO 63501
660-988-0201
schutter@truman.edu

SPOONSTER HAMPS

BOBBY SPOONSTER
PO BOX 23
Eolia, MO 63344
636-359-5487
bspoonster@bgschool.k12.mo.us

ROY WAGGONER, JR

18217 Hink School Ave
Cole Camp, MO 65325
660-221-3388
jwagg30@yahoo.com

WRIGHTS ROCKY ACRES

DON WRIGHT FAMILY
25250 St Hwy 413
Galena, MO 65656
417-437-7381
wrightsrockyacres@hotmail.com

TRIPLE Z HAMPSHIRE

KAYLYNN & WYATT ZIMMESCHIED
27636 Hwy 52
Cole Camp, MO 65325
660-281-3447
mmzimmerschied@gmail.com

3-D/RILEY HAMPSHIRE

12717 Apple Rd
Carthage, MO 64836
417-359-6724
dillardjh@gmail.com

MISSISSIPPI

GILLMORE LIVESTOCK

BRAD, AMY HANNAH & MEREDITH GILLMORE
160 CR 522
Corinth, MS 38834
662-286-5171
bradgillmore@belsouth.net

MONTANA

TERESA CULLIS

44997 Beaver Dr
Ronan, MT 59864
406-207-4619

ENGLERT HAMPSHIRE

EDNA ENGLERT
114 Bridger Fromberg Rd
Bridger, MT 59014
406-662-3236

GIBBS HAMPSHIRE

PATRICK & BEVERLY GIBBS
513 Van Norman RD
Jordan, MT 59337
406-557-2852
patbev gibbs@gmail.com

DAVID GRABER

461 6th Lane NE
Fair Field, MT 59436-9104
406-467-2894

RITA GRABOFSKY

390 GR Lane
Chinook, MT 59523
406-357-3550
grabit@itstriangle.com

MOOSE SPRINGS FARM

AMY GRASSEY
PO BOX 775
Stevensville, MT 59870
406-459-2321
abgrassey@gmail.com

CRAZY H CLUB LAMBS

JASON HEEG
PO Box 217
Shepherd, MT 59079
406-855-1478
crazyhclams@outlook.com

7 MILE HAMPSHIRE

LEANNE HOAGLAND
PO BOX 95
Glendive, MT 59330
406-939-1263
bsshires@midrivers.com

LONGVIEW FARM

SHARON JOHNSON
2691 Hunters Ln
Stevensville, MT 59870
406-396-0618
sммjohnson@cybernet1.com

WILLOUGHBY CREEK FARM

ALAN & TERRI LACKEY
517 S Sunset Bench RD
Stevensville MT 59870
406-777-2492
cowgirlup0505@gmail.com

SWAN LAND & LIVESTOCK

MIKE SWAN
1240 Yadon Rd
Manhattan, MT 59741

NORTH CAROLINA

AUSTIN & JESSICA ARMSTRONG
1140 Oakwood Dr
Walnut Cove, NC 27052
336-480-5288
armstrongartesianfarm@gmail.com

BAME FARMS

ANDREW BAME
1525 Patterson Road
Salisbury, NC 28147
704-857-5726
bamefarms@gmail.com

LAZY 5 RANCH

HENRY & BEVERLY HAMPTON
14235 Hwy 801
Mt Ulla, NC 28125
704-819-7540
champton421@aol.com

NORTH DAKOTA

TRAVIS BELL

12787 Co Rd 19A
Fordville, ND 58231
701-229-3318
tbell@polarcomm.com

DC HAMPS

DENNIS CARTER
6928 93rd St NE
Rock Lake, ND 58365-9593
701-370-8225

DECKERT HAMPSHIRE

DUANE DECKERT
3800 38th St SE
Minot, ND 58701
701-721-6054
deckertflocks@hotmail.com

EPERLY HAMPSHIRE

JOSHUA EPPERLY
11784 64th St SW
New England, ND 58647
701-238-6287
jepps72@hotmail.com

JENSENS HAMPSHIRE

RANDY, VALERIE & DEREK JENSEN
1315 2nd Ave SW #1
Minot, ND 58702
605-868-9203

BONANZAVILLE FARMS

WES LIMESAND
3621 113th Ave SE
Valley City, ND 58072
701-799-1349
w.limesand@bektel.com

DIRECTORY CONTINUED

NORTH DAKOTA STATE UNIV

ANIMAL SCIENCE DEPARTMENT

Hultz Hall
Fargo, ND 58108
701-356-3295

steven.e.anderson@ndsu.edu

ROSE LAWN LEGACY

BURTON & PATTIE PFLIGER

3600 80th St SE
Bismarck ND 58504
701-220-2756

bppfarm@hotmail.com

JAMES VALLEY STOCK FARM

NATHAN & KIMBERLY ROBBINS

7377 County Rd 60
Lamoure, ND 58458
701-883-4212

jamesvalleystockfarm@hotmail.com

KLEVEN HAMPS

206 2nd St NE
Hettinger, ND 58639
701-220-8170

kleven_20@hotmail.com

NEBRASKA

BURCH LIVESTOCK

KOLBY & MICKY BURCH

2935 Little Salt RD
Seward, NE 68434
402-440-3015

burchlivestock@gmail.com

COADY FAMILY

1022 County Rd R
Mead, NE 68041
402-277-6246

mjrc3@windstream.net

COAN HAMPSHIRE SHEEP

KEVIN COAN

PO BOX 230, 356 13th St
Platte Center, NE 68653
402-276-1031

rcoan@frontiernet.net

GILLMORE-DAVISON

PHYLLIS DAVISON

2667 W. Linden
Beatrice, NE 68310
316-841-8223

phylldavison@gmail.com

TOM GILLMORE

2133 SW 18th St
Lincoln, NE 68522
402-477-9080

tgillmore@neb.rr.com

KENT HAMBLETON

55822 N Ember Rd
Fullerton, NE 68638
308-550-0418

kathyhambleton@hotmail.com

GUS HELLER FAMILY

84187 571 St Ave
Pilger, NE 68768
402-369-1928

gheller25@hotmail.com

JUSTIN HENNESSY

125 High School St
Alvo, NE 68304
402-440-3015

driverdebbus11@aol.com

DALLAS HENRY

1671 Road 2100
Blue Hill, NE 68930
269-953-4609

HIGH HILL FARM

JERRY HENSLER

20304 High Hill Ln
Arlington, NE 68002
402-650-7797

jah39@hotmail.com

DIAMOND C FARMS

TRACY HOFFMAN-IDEUS

4453 E Cedar RD
Cortland, NE 68331
402-223-9754

tjhoffmanideus@diodecom.com

HOLTZEN HAMPS

MARVIN HOLTZEN

PO BOX 175
Davenport, NE 68335
402-364-2163

KJELDGAARD FAMILY

4400 Co Rd I J
Tekamah, NE 68061
402-374-1175

almary@microlnk.com

AMY & RACHEL MESSING

1756 Rd I
Rogers, NE 68659
402-352-3321

mess3rac@yahoo.com

JUSTIN MILLER

626 Perry Ave
Hubbard, NE 68741
712-389-2687

justin.miller21@hotmail.com

JUSTIN NATHAN

PO Box 177
Hoskins, NE 68740
402-369-2876

justinnathan22@live.com

STEINMEYER HAMPSHIRE

1963 9th Rd
Wisner, NE 68791
402-380-0959

DLT FAMILY FARMS

DAVID TAYOR

9770 West Hallam Rd
Hallam, NE 68368
402-471-6867

dltfarms6@yahoo.com

TAYLOR LIVESTOCK

MARK & CHERYL TAYLOR

1450 S H St
Broken Bow, NE 68822
308-870-2211

mgthunter@yahoo.com

TVRDY FARMS

JOHN TVRDY

14100 Branched Oak Rd
Waverly, NE 68462
402-786-3289

KORY WAGNER

52591 875 Rd
Winnetoon, NE 68798
402-358-0399

kwanger35@hotmail.com

5 DIAMONDS CLUB LAMBS

DONOVAN & MARIE WALSH

5108 Ave H Place
Kearney, NE 68847
308-224-8000

5diamondsclublambs@charter.net

MAIRE WALSH

5108 Ave H Place
Kearney, NE 68847
308-224-8000

donovan.walsh@bosselman.com

WEG & 1-80 FLOCKS

1012 Rd 14
Geneva, NE 68361
402-540-7884

AD RANCH

25446 280th Ave
Columbus, NE 68601
402-606-6128

adranch10@gmail.com

NEW HAMPSHIRE

GLENN AND JUNE BROOKS

97 Spencer Rd
Whitefield, NH 03598
603-837-2382

brooks_hamps@yahoo.com

BIRCH BRANCH FARM

AMELIA MOORE

75 Fox Garrison Rd
Lee, NH 03861
603-969-7947

moore.amelia92@gmail.com

TAYLOR MORRILL

118 Range Rd
Belmont, NH 03220
603-528-5838

ERIC POIRE

93 Federal St
Belmont, NH 03220
603-528-5838

maplecreekshpfrm@gmail.com

NEW JERSEY

KNIFFEN MAZAKAS HAMPSHIRE

DON KNIFFEN & ANITA MAZAKAS

606 Main St
Asbury, NJ 08802
908-730-8409

kniffenmazakashamps@comcast.net

CHRISTY FARM

CATHERINE CHRISTY

38 42nd St
Whitehouse Station, NJ 8889
908-823-1605

christyfarm@embarqmail.com

STONEY ROAD FARM

SUSAN MILLER

101 Old Clinton Rd
Flemington, NJ 8822
908-334-3396

foxfield@ptd.net

GEORGE STILLWELL

114 Emleys Rd
Cream Ridge, NJ 8514
609-273-1602

renee.stillwell.ffa@gmail.com

NEVADA

RABBIT CREEK SHEEP FARMS LLC

KRISTON HILL

1188 Court St #52
Elko, NV 89801
775-340-5554

kriston1012@gmail.com

95 RANCH

SHANE SANTISTEVAN

Hc36 box 570
Lamoille, NV 89828
775-934-7848

shane.santistevan@sandvik.com

NEW YORK

DIANE & WILLIAM BRYNDA

1606 State Route 30A
Esperance, NY 12066
518-868-4437

hanhamps@gmail.com

DEBRA COLE

28 Nevis Road
Tivoli, NY 12583
845-389-6152

dlcole@frontiernet.net

NATHAN & JENNIFER FUNK

1043 County Road 19
Norwich, NY 13815
607-336-1662

njfunk36@gmail.com

FOUR WINDS HAMPSHIRE

CHAD HANSEN

1399 Hullsville Rd
Owego, NY 13827
607-761-8152

hansen36@hotmail.com

FOLDING HILLS

HAMPSHIRE

HEATHER & MALCOLM JOHNSON

433 Mickle Hollow Rd
Warnerville, NY 12187
518-234-3305

malcolmbuzzjohnson@yahoo.com

ETHAN KENNEDY

4975 Canandaigua Farming
Canandaigua, NY 14424
585-398-3002

ekk.tdg@gmail.com

TOP NOTCH LIVESTOCK

ASHLEY MCFARLAND

PO BOX 258
Richfield Springs, NY 13439
315-406-3963

JOSHUA MILLER

331 Knox Road
Schohaire, NY 12157
518-231-8113

KELSEY & KATELYN O'HARE

6168 Curriers Rd
Arceade, NY 14009
585-492-0345

johare6@gmail.com

MAXWELL PETERSON

423 Miller Valley Road
Kennedy, NY 14747
716-397-8129

marksjewelfarm@gmail.com

PINCKNEY SHEEP FARMS, LLC
 DAVID PINCKNEY
 6780 State Route 90 North
 Cayuga, NY 13034
 315-406-8949
 pnkyfirmw@verizon.net

MATHEW PICKNEY
 3065 Hadden Road
 Clyde, NY 29846
 315-665-1006
 pnkyfirmw@verizon.net

OHIO

SYCAMORE LANE HAMPSHIRE
 MIKE BARNES
 14207 Township Road 199
 Kenton, OH 43326
 937-539-3825
 mlb0142@yahoo.com

KEITH BARNES
 308 CR 51 W
 Belle Center, OH 43310
 937-441-4237
 kkbarnes@watchtv.net

KEVIN BARNES
 18466 Moyer Rd
 Waynesfield, OH 45896
 567-204-5232
 kbarnes2014@gmail.com

TBM FARMS
 TOM BAUGHMAN
 2765 Rix Mills Road
 New Concord, OH 43762
 740-872-3184

MADISON BAUMER
 8181 SR274
 Anna, OH 45302
 937-658-3119
 brandtfarms@hotmail.com

BAYLISS STOCK FARM
 DOUG BAYLISS
 1214 St Rt 274 E
 Rushsylvania, OH 43347
 937-935-7549
 dbayliss1957@gmail.com

NATHAN BENCH
 5145 ST RT 598
 Plymouth, OH 44865
 567-224-8850
 nbenich@yahoo.com

CARR HAMPSHIRE
 MITCH CARR
 2362 Brownsville Rd
 Newark, OH 43055
 740-763-3578
 sales@oifp.com

DARIN CHRISTMAN
 67550 Batesville Rd
 Quaker City, OH 43773
 740-260-1257
 christman1@windstream.net

CLUNK FAMILY HAMPS
 ROBERT CLUNK
 4054 Larue Green Camp
 Marion, OH 43302
 740-528-2551
 clunkhamps@yahoo.com

JOE CRISWELL
 1166 Prospect
 Marion, OH 43302
 740-369-9099

JAMES CROSKEY
 9717 Township Rd 560
 Holmesville, OH 44633
 320-231-0395
 jimmy@croskeyfamily.com

DOUBLE BAR D
 DEBORAH & DENISE DEAL
 9818 Navarre Rd SW
 Navarre, OH 44662
 330-879-5327
 ddeal1957@aol.com

DIXON FARM
 KARA DIXON
 47999 Lewisville N Rd
 Lewisville, OH 43754
 740-228-3118
 dixonfarm@live.com

CHAD & HANNAH EPLEY
 104 E Hocking St
 Canal Winchester, OH 43110
 740-503-1949
 theonlysheepman@hotmail.com

ERWIN FAMILY HAMP FARMS
 CRIS, NICKI, & JACCI ERWIN
 14101 Boundary Rd
 Richwood, OH 43344
 937-578-8303
 danerwin.54@gmail.com

EAST VIEW FARM
 HAROLD HEIDLEBAUGH
 5760 Peltier Rd
 Delphos, OH 45833
 419-695-8696

WAYNE HORTON & FAMILY
 6823 Williams Rd
 Painesville, OH 44077
 440-352-1023
 mr.wayneshorton@gmail.com

HOWELL CLUB LAMBS
 LARRY HOWELL
 8582 Township Line Rd
 Celina, OH 45822
 419-953-0238
 larryhowell@bright.net

HOWMAN HOMESTEAD
 JOE HOWMAN
 9510 N Elyria Rd
 West Salem, OH 44287
 330-749-7663
 howmanj69@gmail.com

RUSS & MOLLY JOHNSON FAMILY
 3020 Fox Lake Rd
 Wooster, OH 44691
 330-345-1290
 rivenoak@snsnet.com

SCARLET ACRES
 DUSTIN KNAPKE
 08372 Glynwood Rd
 Wapakoneta, OH 45895
 614-759-6841
 dustin.knapke@gmail.com

KORB FAMILY FARMS
 ANDY & JEFF KORB
 1525 Sample Rd
 Oxford, OH 45056
 513-312-0648
 akorb16@aol.com

MCCANDLISH HAMPSHIRE
 GARY MCCANDLISH
 5200 Woolard Rd NE
 Pleasantville, OH 43148
 740-407-6532
 whisperdaisy19@hotmail.com

MC COY CLUB LAMBS
 MIKE & LINDA MC COY
 2120 Twp Rd 757
 Perrysville, OH 44864
 419-685-1377
 mccoy2626@hotmail.com

MCCOY CLUB LAMBS
 MICHAEL MCCOY
 6618 Wadsworth Rd
 Orrville, OH 44667
 330-465-5465

MEYERS SHOW LAMBS
 LEE MEYERS
 1668 Apple Rd
 St. Paris, OH 43072
 937-214-1303
 leemeyers@windstream.net

CONNOR, ADAM & ANGELA MILNER
 1295 S Knoxville Ave
 St Marys, OH 45885
 419-584-8791
 adamangiemilner@gmail.com

S & P MYERS & FAMILY
 4450 St Rt 274 E
 Rushsylvania, OH 43347
 937-935-6715
 sptmyers@centurylink.net

NEAL SHOW LAMBS
 JEFF NEAL
 778 E CTY RD 50
 TIFFIN, OH 4483
 419-356-0128

NICKLES SHOW STOCK
 KYLE & AUDREY NICKLES
 8137 S State RT 67
 Sycamore, OH 44882
 419-618-0527
 a-neal-09@yahoo.com

WALTER PAXSON & FAMILY
 10781 Sugarcreek Rd
 Harrod, OH 45850
 419-358-5327
 walterpaxson@embargmail.com

CRAIG POWELL
 18570 TWP Rd 90
 Forrest, OH 45843

SCHLICHTER HAMPSHIRE
 DAN & LINDA SCHLICHTER
 10187 Praire Rd NW
 Washington Ch, OH 43160
 740-426-6538
 hampsheep@in-touch.net

SHELL'S HAMPSHIRE
 DAN & MARLA SHELL FAMILY
 1901 Doak Rd
 Midland, OH 45148
 614-496-8575
 shellshampshires@hotmail.com

SHROYER SHOW STOCK
 JOHN SHROYER
 3296 Tr 35
 De Graff, OH 43318
 937-935-0830
 jshroyer@watchtv.net

STAR-MAR FARMS
 STARRETT FAMILY
 7589 Perry's Den Rd
 Cumberland, OH 43732
 740-638-2521
 starmarsheep@gmail.com

STEFFEN HAMPSHIRE
 RICHARD STEFFEN
 172 Twp Rd 1281
 New London, OH 44851
 419-929-1184

STITZLEIN FARM
 MICHAEL STITZLEIN
 797 CO Rd 1754
 Ashland, OH 44805
 419-651-3501
 mikestitzlein@gmail.com

DR GARY TOPP & FAMILY
 5093 Highview Dr
 Fredericksburg, OH 44627
 330-695-5541
 kgtopp@yahoo.com

BACKWOODS FARM
 JEFF ULRY
 7367 Harmony Church Rd
 Johnstown, OH 43031
 740-967-7250
 jlulry@gmail.com

DAN WESTLAKE
 17183 Mackan Rd
 Marysville, OH 43040
 937-243-5111
 tanddd3j@jencospeed.net

WISE HAMPS
 TOM & CAROL WISE
 16099 Cr 172
 Findlay, OH 45840
 419-427-8608
 ewer@wisehamps.com

ZIMMERLY CLUB LAMBS
 GEOFFREY ZIMMERLY
 6696 Rohrer Rd
 Wooster, OH 44691
 330-464-7087
 geoffreyzimmerly@gmail.com

CUNNINGHAM FARMS
 18745 Cr 109
 Arcadia, OH 44804
 419-348-1896
 derek@thewaxv.com

FLINT RIDGE FARM
 5091 Mulberry Rd Se
 Newark, OH 43056
 740-763-3875

BRANDT'S HAMPSHIRE
 8181 St Rt 274
 Anna, OH 45302
 937-658-3119
 brandtfarms@hotmail.com

BUCKEYE FARMS HAMPSHIRE
 17787 Township Rd 70
 Forest, OH 45843
 419-674-7025
 craig@mvmeat.com



OKLAHOMA

REBECCA ALLEN

20510 Liberty Rd
Morris, OK 74445
918-381-6069
allenclublambs@gmail.com

ALLEN SHOW LAMBS

TY & NICOLE ALLEN

20510 E 1110 Road
Elk City, OK 73644
580-225-2679

allennl83@gmail.com

BRUNKER CLUB LAMBS

BRANDON BRUNKER

7222 South Fairgrounds Rd
Stillwater, OK 74074
405-612-8152

brunkerclublambs@yahoo.com

BRUNKER CLUB LAMBS

STUART BRUNKER

405 N Rose Rd
Stillwater, OK 74075
405-612-6230

sjbrunker@yahoo.com

CABANISS CLUB LAMBS

JOE CABANISS

22220 E 1010 Rd
Arapaho, OK 73620
580-445-6075

cabanissclublambs@gmail.com

NOC SHEEP CENTER

BART CARDWELL

1220 E Grand
Tonkawa, OK 74653
580-628-6463
bart.cardwell@noc.edu

DON CHANDLER

80588 N2592 RD
Watonga, OK 73772
580-791-1250

donchandler@pldi.net

DEREK CHAPIN

608 Brandon Place
Yukon, OK 42099
815-531-9639

derekchapin@att.net

CHARMASSON CLUB LAMBS

CHAD CHARMASSON

PO BOX 823
Hennessey, OK 73742
580-512-1438

advantagesupplementsllc@gmail.com

JOSHUA CHRISTIAN

22020 County Road 1560
Stonewall, OK 74871
580-447-3427

joshuacristian8@yahoo.com

COLE CLUB LAMBS

REX COLE

11281 N 1975 Road
Elk City, OK 73644
580-821-2355
colewoolies@cablone.net

DAVIS SHOW LAMBS

JAMES DAVIS

334871 E860 Rd
Wellston, OK 74881
405-642-5202

j.davis728@yahoo.com

JIMMY DAVIS

1204 W Colorado
Walters, OK 73572
580-585-3822
jmdavis@waltersp.com

JEREMY EATON

28226 E 840 RD
Cashion, OK 73016
405-433-9163

eatonclublambs@att.net

KODY EVERETT

11231 CR 3554
Ada, OK 74820
918-759-3551

kody.everett@gmail.com

E4 CLUB LAMBS

MIKE FREELAND

3006 Road P
Guymon, OK 73942
580-651-4573

f4clublambs@gmail.com

GOODWIN CLUB LAMBS

DALE GOODWIN

8550 W North Ave
Ponca City, OK 74601
580-765-0039

dgoodwin@poncacity.net

JENNIFER HALMIN

1520 Country Road 2150
Skiatook, OK 74070
918-636-0725

jennifer.burge22@gmail.com

HANNAH HARDIN

9820 N Rose Rd
Glencoe, OK 74032
405-334-7349

hardinclublambs@gmail.com

JOE HARRELL

24848 W Gore Blvd
Indianapolis, OK 73552
580-591-1091

harrell.joe@sbcglobal.net

KEEGAN, KAYLN & CHISM

HOLT

PO BOX 1
Cordell, OK 73632
580-660-0899

gailoneil75@gmail.com

BRADY & BRANDON HOWARD

20605 N Pine
Mulhall, OK 73063
405-649-2500

howardsheepfarm@aol.com

LAND RUN HAMPS

AARON & RYAN HUBBARD

342490 E 760 Rd
Agra, OK 74824
918-225-9743

megafarms1@yahoo.com

DWAYNE HURLIMAN

Rr 3 Box 6a
Cordell, OK 73632
580-603-1755

baabaa65@yahoo.com

KARBERVILLE FARMS & RANCH

SAM KARBER

RT 2 BOX 100
Balko, OK 73931
580-361-2398

smkarb52@gmail.com

CHRISTI KEETON

PO Box 175
Ninnekah, OK 73067
405-320-2386
christikeeton1981@hughes.net

BROOKS & KIMBERLY KING

18728 S Mingo
Bixby, OK 74008
918-366-3831

kim4king@olp.net

ALYSSA MACDONALD

8525 E 126th St S
Bixby, OK 74008
918-951-2000

bixbysheepboutique@gmail.com

A & F CLUB LAMBS

ALICIA & FALICI MANSFIELD

RT 1 Box 408
Wann, OK 74083
620-515-4993

aliciamansfield@yahoo.com

VINCE & JACKIE MC GOLDEN

PO Box 432
Fairview, OK 73737
580-744-0844

mcgolden@pldi.net

ALLISON MCGOLDEN

PO Box 744
Arapaho, OK 73620
580-323-7198

amcgolden@hotmail.com

REESE & COOPER MENG

4202 W Doolin Ave
Blackwell, OK 74631
620-271-2999

JENNIFER MOSER

PO BOX 36
Yale, OK 74085
918-399-0516

moserranch@yahoo.com

OKLAHOMA STATE UNIVERSITY

103 Animal Science Bldg
Stillwater, OK 74078
405-624-6065

darinaa@ostatemail.okstate.edu

OTT CLUB LAMBS

BRAD & DEB OTT

50653 S Co Rd 257
Fairview, OK 73737
580-794-9324

bott@pldi.net

ALEX PEACE

960356 S HWY 18
Chandler, OK 74834
405-258-4062

peacevalleyfarms8@yahoo.com

RANDY PIRTLE FAMILY

397271 W 400 Rd
Copan, OK 74022
918-440-4553

pcopan1@aol.com

MARVIN PURDY & SON

4202 W Doolin Ave
Blackwell, OK 74631
620-271-2999

r.purdy@sbcglobal.net

SCOTT REED

1202 W Colorado
Walters, OK 73572
580-351-8555

JO DEE & JAMES

REXWINKLE

PO Box 23
Afton, OK 74331
918-637-2304

rickrexwinkle@gmail.com

RICHARDSON CLUB LAMBS

JOHN RICHARDSON
21224 East 1050 Rd
Foss, OK 73647

TRIPLE R HAMPSHIRE

CARLA ROBISON
103954 S 3300 Rd
Harrah, OK 73045

405-517-7786

crobison67@yahoo.com

RUBY'S RANCH HAMPSHIRE

MELINDA RUBY-GRUNER
18010 N 93rd E Ave
Collinsville, OK 74021

918-340-3227
melinda.rubygruner@yahoo.com

SCOTT SCHAEFFER

2714 N Sangre Rd
Stillwater, OK 74075
405-743-5646

sschaefer@yahoo.com

RAYLEE & LAREMI SOELL

Route 1 BOX 79A
Texhoma, OK 73949
806-339-8220

sjsuell@gmail.com

TEAGUE FAMILY FARM

JEREMY TEAGUE
PO Box 2394
Owasso, OK 74055

918-798-3298

cheyannateague25@gmail.com

ROBERT TESTERMAN

304 W 4Th St
Owasso, OK 74055
918-274-8843

ttwsted8@aol.com

SHACOLE THOMPSON

101 S Ada St
Coalgate, OK 74358
580-889-1510

jason@semachine.com

WILBOURN RANCH

DENNIS WILBOURN

101 Star Ridge Rd
Morrison, OK 73061
405-249-8896

dwilbourn@bbumail.com

SKIPPER BILL WILSON

18224 E 19th St
Yale, OK 74085
580-977-8625

skipperwclublambs@gmail.com

YANDELL LIVESTOCK

15422 S Oakwood Rd
Bison, OK 73720
580-829-2803

amber.allen11@okstate.edu

SHENOLD CLUB LAMBS

3902 W 56th
Stillwater, OK 74074
405-334-2293

jacklyn46@live.com

OREGON

**BOB & ANNETTE
ASCHENBRENNER**
83110 Eggleston LN
Enterprise, OR 97828
541-263-0423
annette.aschenbrenner@gmail.com

BOATMAN CLUB LAMBS

DAVID BOATMAN
5700 Nw Ryegrass Rd
Prineville, OR 97754
541-815-0205

ROCKY RIDGE HAMPSHIRE

DANIEL BOLEN
62836 Ernest Rd
Elgin, OR 97827
503-704-2043
daniel@dymco.org

ROGUE HAMPSHIRE

ROBERT BOTHERN
6435 W Evans Creek
Rogue River, OR 97537
541-864-0439
roguehampshires@gmail.com

BURNS-HALE LIVESTOCK

LOYAL & DEBORAH BURNS
PO Box 244
Crabtree, OR 97335
541-258-6934
deb@bhlivestock.com

**BETTY JO BUTTER-
FIELD-ROTHBALLER**

744 NE Oak Place
Redmond, OR 97756
541-280-2497
hrothballer@gmail.com

MELODY CARROLL

17711 S HWY 221
MOLALLA, OR 97038
503-829-8295
soggyacres@molalla.net

CHAR-LAND FARMS

LISA CHARPILLOZ HANSON
32525 S Barlow Rd
Woodburn, OR 97071
503-881-6550
alekhanson@live.com

JULIE ENGLUND

89784 McCroskey Rd
Astoria, OR 97103
503-325-0527
jenglund@teleport.com

DAVE GOWAN

1550 Azalea Drive
Elkton, OR 97436
541-584-2217
oldsuffolkrancher@gmail.com

CHAR-LAND FARMS

ELLIE & KATIE HANSON
32525 S Barlow Rd
Woodburn, OR 97071
503-881-6550
alekhanson@live.com

HARMS HAMPS

MIKE HARMS FAMILY
26200 S Harms Rd
Canby, OR 97013
503-266-3677
harmss@canby.k12.or.us

**HUBBARD-ROSELAWN
HAMPSHIRE**

CM HUBBARD
27511 W Ingram Island Rd
Monroe, OR 97456
541-554-1439
cmhubbard@99w.us

EMMA HUBBARD

37820 Jones Road
Bonanza, OR 97623
541-545-6357
hubbard796@gmail.com

D P MACCARTHY & SON

4920 N Matney Rd
Monmouth, OR 97361
503-838-1766
s.maccarthy@wildblue.net

OLSON RANCH

BARB & KIM OLSON
35524 Zephyr Way
Pleasant Hill, OR 97455
541-954-7585
olyranch@aol.com

HALEY ROTHBALLER

744 Ne Oak Place
Redmond, OR 97756
541-280-2497
hrothballer@gmail.com

STOTERA FARMS HAMPSHIRE

TONY STOTERA
83261 Rattlesnake Rd
Dexter, OR 97431
541-747-2634
bugasheep@aol.com

THOMPSON RANCH

JIM & ELAINE THOMPSON
33877 Red Bridge Rd SE
Albany, OR 97322
541-926-8847
ethom12440@aol.com

PENNSYLVANIA

ECHO HOLLOW FARM

ERIC & SALLY BACON & SONS
12855 Laurel Rd
Brogue, PA 17309
717-927-9534
s-atool@verizon.net

BEATTY'S CLUB LAMBS

GREG & JAMIE BEATTY
1358 Rustic Lodge Rd
Indiana, PA 15701
740-501-0042
jamiebanbury@live.com

LEE & SHIRLEY BEDILLION

257 Early Rd
West Alexander, PA 15376
724-484-0839

BISHOP'S CLUB LAMBS

TIMOTHY BISHOP
2002 Fairman Hollow Rd
Creekside, PA 15732
724-422-9173
tim.bishop77@gmail.com

MR & MRS CLYDE BRUBAKER

263 S Mountain Rd
Robeson, PA 19551-9216
610-589-2137
jcdbluacre@aol.com

SONSHINE ACRES

WALTER W & DENISE CLARK
20862 Ryan Rd
Meadville, PA 16335
814-333-9251
wwclark@windstream.net

STEPHANIE DORER

932 North Queen Street
York, PA 17404-2556
717-848-9674
oreo694@aol.com

KURT FLEENER

273 S Mountain Rd
Robeson, PA 19551
717064404228
fleenerlivestock@gmail.com

TIM & SARAH FLEENER

273 S Mountain Rd
Robeson, PA 19551
717-413-5181
fleenerlivestock@gmail.com

KYLE & JEN FLEENER

807 Beecherstown Rd
Biglerville, PA 17307
717-304-9116
fleenerkm@yahoo.com

DANA HARDISKY

268 Squire Hill Rd
Nicholson, PA 18446
570-687-7967
dmh268@cocrell.edu

SAMUEL HAYES, JR

PO BOX 120
Warriors Mark, PA 16877
814-632-6390

HOLTRY HAMPS

RAY & MINDY HOLTRY
2290 Pine Rd
Newville, PA 17241
717-776-4192

MIRANDA HUNTER

273 South Mountain Road
Robeson, PA 19551
302-463-3436
mirandahunterp@gmail.com

CARALYNN HYDUKE

102 Forbes Trail Dr
Export, PA 15632
724-472-7729
cjh31391@yahoo.com

H F LONGWELL & SON

11697 State Rd
Kittanning, PA 16201
724-859-0704
jerry1123@windstream.net

LOVELL MAPLE SPRING FARM

RALPH & MARIAN LOVELL
516 Maple Spring Rd
Linden, PA 17744
570-494-0288
lovellfarm@msn.com

DAVID LYTLE FAMILY

190 Church Rd
Lincoln University, PA 19352
484-678-9291
david.lytle@churchdwright.com

J & M MAGEE CLUMB LAMBS

J MAC MAGEE
PO BOX 106
Orrstown, PA 17244
717-377-1469
mac.magee@yahoo.com

MARSH FARM

NANCY MARSH
3065 Compass Rd
Honey Brook, PA 19344
484-645-3560
nmarsh55@comcast.net

JONATHAN MAY

208 Hope Rd
Buffalo Mills, PA 15534
703-855-0397
jonathan@mayfamilyenterprises.com

TRIPLE J HAMPS

JESSI MCCARTY
8 Spring Hollow Ln
Bloomsburg, PA 17815
570-441-1323
triplejhamps@outlook.com

BRIDGET MCCONN

PO Box 84
West Alexander, PA 15376
724-484-7893
peggy.mcconn@gmail.com

RACHEL PAINTER

128 Painters Lane
Avilla, PA 15312

TWIN MAPLES FARM

JAMES & MELODY PARLETT
88 Parlett Rd
Airville, PA 17302
717-862-3610

WADE PEARSON

227 Plum St
Williamsburg, PA 16693
814-644-9411
wclwade89@gmail.com

KAYLA SHUGHART

1552 W TRINDLE RD
CARLISLE, PA 17015
717-460-7310
kmyers012@gmail.com

SMITH CLUB LAMBS

DWIGHT & GAIL SMITH
1431 Glencoe Rd
Fairhope, PA 15538
814-279-4329
gsmith1925@gmail.com

ROSE SMITH

1894 Hazelet Church Rd
Cherry Tree, PA 15724
724-840-7105
pinchette2004@gmail.com

JADEWOOD VALLEY FARM

STACY TAYLOR
1467 Ringgold Timblin Rd
Timblin, PA 15778
814-360-2161
stctyler@aol.com

MATT TROSTLE

2550 Cape Horn Rd
Red Lion, PA 17356
717-757-6062
mit_sdown2001@yahoo.com

NIKI WELSH-RYBURN

32 Longview Ln
Claysville, PA 15323
724-986-2693
welshfarmsheep@gmail.com

DIRECTORY CONTINUED

ANITA & BRIAN WENTZ

148 Opposum Lake Rd
Carlisle, PA 17015
717-514-9891
bjwentz@yahoo.com

ANIMAL SCIENCE DEPARTMENT

DELAWARE VALLEY COLLEGE
700 E Butler Ave
Doylestown, PA 18901
215-489-2247
natalie.crooke@delval.edu

RHODE ISLAND

BERTINA FISK

PO Box 71
Clayville, RI 2815
401-465-8159
tinashamps@verizon.net

STRAWBERRY FIELDS

SUE A SEARLE
198 Weaver Hill Rd
West Greenwich, RI 2817
401-374-1255
sueasearle@yahoo.com

SOUTH DAKOTA

AWTR CLUB LAMBS

KEITH ANDERSON
47932 298th St
Alcester, SD 57001
605-934-2550
keithanderson@alliamcecom.net

DONNIE BEGALKA

46576 187th St
Castlewood, SD 57223
605-873-9309
sbegalka@ictel.com

BODDICKER FARM

WILLIAM & BRANDY BODDICKER
4127 273rd St
Parkston, SD 57366
605-928-4017
lilstutz1@yahoo.com

MICHEL & BETTY BRINK

38832 US Hwy 212
Redfield, SD 57469
605-472-0769

CHAPMAN HAMPSHIRE

BEAU CHAPMAN
PO BOX 251
Bison, SD 57620
605-244-7166
beauchapman@sdplains.com

DALE FAMILY LIVESTOCK

JUSTIN DALE
PO BOX 86
Garden City, SD 57236
307-299-1227
dalefamfarm@hotmail.com

DEZEEUW FARMS

RUFUS DEZEEUW FAMILY
21315 Us Hwy 14
Elkton, SD 57026
605-690-8269
rpdeezeuw@itctel.com

MATT EICH FAMILY

21853 465th Ave
Volga, SD 57071
605-690-8748
agronomyguy674@gmail.com

FAIRLEY FARMS

BRIAN FAIRLEY
45255 313st St
Gayville, SD 57031
605-267-4877
fairley1@hotmail.com

FULLER BROS

BILL & JODY FULLER
17557 434th Ave
Clark, SD 57225
605-881-9649
lambs4u@itctel.com

FULLER'S HAMPS

PAUL FULLER FAMILY
210 N Cloud St
Clark, SD 57225
605-881-9649
lambs4u@itctel.com

FULLER SHEEP FARM

WAYNE FULLER
17889 SD HWY 25
Vienna, SD 57271
605-881-8384
wlfuller@itctel.com

FULLER FARMS SHEEP

DAVID FULLER
17404 435th Ave
Henry, SD 57423
605-881-2968
fullerfarms@icloud.com

ROB FULLER FAMILY

17557 434th Ave
Clark, SD 57225
605-881-9649
lambs4u@itctel.com

FULLER SHEEP FARM

DUSTY FULLER FAMILY
43307 176th St
Clark, SD 57225
605-520-4403
jdfuller@hotmail.com

GAPP HAMPSHIRE

DAVID GAPP
46552 149th St
Twin Brooks, SD 57269
605-398-6514
dlgapp@trics.com

GERDES HAMPSHIRE

DAN & DARRELL GERDES
23012 457th Ave
Madison, SD 57042
605-398-6514
gerdeshamps@gmail.com

BEVERLY HEIER

13961 Prairie City Rd
Prairie City, SD 57649
605-866-4410
heiranch@sdplains.com

HELD'S HAMPSHIRE

JEFF & MARY HELD
21320 477th Ave
AURORA, SD 57002
605-690-7033
mheld461@gmail.com

KELSEY HOUGHTALING

38354 197th St
Wolsey, SD 57384
605-635-6222

JAKOB HAMPSHIRE SHEEP

HANNAH JAKOB
47717 174th St
Clearlake, SD 57226
605-880-0637
jakobhampshiresheep@gmail.com

DAVID JUNTUNEN

43950 187th St
Bryant, SD 57221
605-628-2949
jute@itctel.com

COLLIN KLEBSCH

38701 170th St
Redfield, SD 57469
605-460-2309
cjk_01@hotmail.com

L & L HAMPSHIRE

BRENT LARSON
20205 477th Ave
White, SD 57276
402-206-1561
larson76@gmail.com

ROCKING L RANCH

KAREN & LAVERN LEE
15421 455th Ave
South Shore, SD 57263
605-880-2565
klee@tnics.com

RONALD MARKO

15446 468th Ave
Stockholm, SD 57264
605-880-9890
graywold@sstel.net

MARSHALL SHEEP CO

BARRET MARSHALL
45491 204th St
Arlington, SD 57212
605-695-2528
barretmarshall@hotmail.com

MILLER FARMS

KODY MILLER
20067 462nd Ave
Bruce, SD 57220
605-690-1997
kodymillercattle@hotmail.com

PHILLIP C MOORE FAMILY

25240 375th Ave
White Lake, SD 57383
605-249-2471

LARRY & POLLY OLSEN

24280 389th Ave
Plankinton, SD 57368
605-999-0030
lpolsen@siouxvalley.net

PETERSON SHEEP CO

DOUG & LINDI PETERSON
803 23rd St NE
Lemmon, SD 57638
701-376-3115
peterson@sdplains.com

WILLIAM SCHIEFELBEIN & SONS

304 8th Ave S
Clear Lake, SD 57226
605-874-2019
wschiefe@itctel.com

SLACK FAMILY FARM

JEFF SLACK
29141 SD HWY 19
Viborg, SD 57070
605-360-4904
jslack@hcinet.net

SOUTH DAKOTA STATE UNIV

ANIMAL & RANGE SCIENCES
Box 2170 N Campus Dr
Brookings, SD 57006
605-693-3808
karolynn.marsan@sdsstate.edu

THOMAS HAMPS

PHILIP & JADEN THOMAS
44036 Sd Hwy 44
Marion, SD 57043
605-759-0574
pjt@gwtc.net

MELISSA & BRECKEN VOSIKA

409 E 16th St
Gregory, SD 57533
605-830-0445
fruity_55@yahoo.com

BERENS FAMILY HAMPSHIRE

27974 448th Ave
Parker, SD 57053
605-661-3963
rberens@gwtc.net

KKJ LIVESTOCK

45720 188 St
Lake Norden, SD 57248
605-520-0923
blwettstad@hotmail.com

TONAK HAMPSHIRE

43086 Sd Hwy 28
Willow Lake, SD 57278
605-625-3306
dan.tonak@k12.sd.us

HOUGHTALING HAMPS

18522 407th Ave
Doland, SD 57436
605-350-4222
janh@nrctv.net

DOUBLE A RANCH

15445 454th Ave
South Shore, SD 57263
605-949-2034
abean4444@yahoo.com

TENNESSEE

FINE LINE GENETICS

AUSTIN & AMANDA EDWARDS
364 George Cox Road
Sparta, TN 38583
386-804-4642
aledwards422@gmail.com

GAGE GODDARD

2999 Hines Valley Rd
Lenoir City, TN 37771
865-458-5612
jg@utk.edu

HULL CLUB LAMBS

JUSTIN HULL
2205 Halltown Rd
Hartsville, TN 37074
541-419-3021
hullclublambs@gmail.com

LINWOOD FARM

BEN POWELL
4233B Poplar Hill Rd
Watertown, TN 37184
615-237-0300
benthomaspowell@gmail.com

BIG OAKS FARM

JAMES TRIVETT
23 Towry Rd
Fayetteville, TN 37334
931-433-4068

TED TURNER

653 Laighs Chapel Road
Covington, TN 38019
901-619-7914
turner476@aol.com

TEXAS

LINDA BERRY

16897 Krug Rd
Tomball, TX 77377
713-206-2845
lberrysusa@gmail.com

ANN BEST

132 CR 2100
Meridian, TX 76665
214-205-6806
bestann@hotmail.com

BARRETT CARLISLE

6487 East FM 41
Ropesville, TX 79358
806-548-2636
skippcarlisle@yahoo.com

CHABOT SHOW LAMBS

DARICK CHABOT
3380 County Rd 226
Stephenville, TX 76401-7353
254-485-3016
dchabot@txfb-ins.com

CODY LIVESTOCK

JOSH CODY
1604 CR 214
Bertram, TX 78605
469-667-3237
codylivestock@yahoo.com

ROBERT CURRIE

20542 HWY 105
Cleveland, TX 77328
281-802-8468
frobcurrie@sbcglobal.net

JEFFREY DUDENSING

10100 CR 428
Somerville, TX 77879
806-790-2817
jeffrey.dudensing@gmail.com

ELLEDGE SHEEP FARM

KRIS EDE
6483 Highway 90 West
Uvalde, TX 78801
830-486-6080
elledgesheep@gmail.com

ESMOND CLUB LAMBS

KIRK ESMOND
525 Skyline Dr
Argyle, TX 76226
214-213-5942
hairypet@pwhome.com

KAYDI FARR

100100 W US HWY 84
Gatesville, TX 76528
254-223-3687
kaydifarr.kf@gmail.com

CODY FARRIS

118 Trifecta Ln
Fort Worth, TX 76126
830-391-5437
farrisfarmsclublambs@yahoo.com

FARROW HAMPSHIRE

COBY FARROW
10706 E County Rd 120
Midland, TX 79706
432-413-7590

ROBERT GARCIA

30 FM 1407
Crystal City, TX 78839
830-334-1330
rng_911@yahoo.com

GUY GLASSCOCK

PO Box 3096
Early, TX 76803
325-642-3131
guyslamb11@aol.com

JOSHUA HANSEN

PO BOX 343
Seminole, TX 79360
817-456-5980
hansenlivestock@gmail.com

CHRISTEN HARRIS

5230 Crystal Springs
Midlothian, TX 76065
972-935-6342
cccharris@5bcg10bal.net

KATHRYN HEINTZ

242 CR 4705
Mount Pleasant, TX 75422
903-572-7171
kathrynheintzdvm@gmail.com

RICHARD HUNTER

PO Box 532/900 CR 426
Jourdanon, TX 78026
830-570-2857
rhunter@jisdtx.us

MIKE JONAS

5723 Purgatory Rd
New Braunfels, TX 78132
830-964-3100
mjonas@gvtc.com

JAMES KARBER

PO Box 255
Vega, TX 79092
806-679-6953
darcykarber@valornet.com

JOEL LANIER

151 Cr 309
Seminole, TX 79360
432-770-0483
lanierjoel@yahoo.com

BRISTER CLUB LAMBS

SARAH LOVING
6867 CR 501
Anson, TX 79501
254-216-3244
sarah@bristerclublambs.com

WAYNE MAHLER

171 S Tate HWY 83 E
Seagraves, TX 79359
803-831-9202
wmahler24@gmail.com

TYLER MALTSBERGER

214 Crestwood Dr
Kerrville, TX 78028
210-241-5982
maltbergerlivestock@gmail.com

KEVIN MEEK ENTERPRISES

KEVIN MEEK
15003 FM 1268
Canadian, TX 79014
806-662-4372
kwmeek63@gmail.com

CHRISTOPHER MEIWES

825 Highway 70
Earth, TX 79013
806-346-3411

DERICK MILLER

1550 B Cr 121
Seagraves, TX 79359
806-239-3670
millerpecanfarms@gmail.com

DUSTIN MILLER

2011 Cr 400
Brownfield, TX 79316
806-535-7400

JIM MILLER

1550 A Cr 121
Seagraves, TX 79359
806-487-6891
millerhampshires@hotmail.com

NEFF LIVESTOCK

CHANCE NEFF
945 Buffalo Ln
San Angelo, TX 76901

MIKE NICHOLS

3000 Cr 305
Zephyr, TX 76890
936-760-9699
ewedebn@yahoo.com

ABBY NIGHTINGALE

1413 State Hwy 173 S
Bandera, TX 78003
830-796-3787
drconrad@sbcglobal.net

ROCHELLE POZO

38973 Addie Gee Rd
Hempstead, TX 77445
832-515-1543
hollipozo@yahoo.com

COLT SHARPTON

7039 Deep Well Rd
Bryan, TX 77808
979-209-9714
cmsharpton@gmail.com

SILVERS LIVESTOCK

SAM SILVERS
PO Box 818
Junction, TX 76849
830-234-7021
silvers.klc@gmail.com

DOUBLE SS CLUB LAMBS

SHANE & SUSAN SMITH
6357 General Davis
Sandia, TX 78383
361-446-4645
doublesshorneddorsets@yahoo.com

STUART SPRUILL

5206 Cr 185
Stephenville, TX 76401
254-977-2390
spruill53@embarqmail.com

SAVAGE CLUB LAMBS

EVAN & CELE STONE
761 Fm 40
Ralls, TX 79357
806-241-3644
savageclublambs@hotmail.com

DRAGGIN'S LIVESTOCK

REED SULTEMEIER
1921 Doebbler Rd
Fredericksburg, TX 78624
830-889-1972
dawn.sultemeier@yahoo.com

JAMES TAYLOR

936 Rice Road
Riesel, TX 76682
432-230-4126
abtxpressllc@gmail.com

TURNER SHOW STOCK

ANDY TURNER
1220 Hynds Ranch Rd
Van Alstyne, TX 75495
254-290-0420
turnershowstock@verizon.net

DAN VESTAL

806 Vestal Dr
Fredericksburg, TX 78624
830-998-0028

BRIANNA & COLBY VIETH

16696 FM 172
Scotland, TX 76376
940-636-4040
dbvieth@yahoo.com

VILLARREAL HAMPSHIRE

ERNESTO VILLARREAL
1022 Laurel Dr
Laredo, TX 78045
956-229-0306
evillarrealjr2003@gmail.com

MARK WALLEN

3113 South US Hwy 75
Sherman, TX 75090
469-595-9054
mwallen@gmail.com

FLYING W SHEEP CO

WYATT WHARTON
PO Box 500 6821 Farm Road 128
Ben Franklin, TX 75415
817-966-4314
wwharton@northhopkins.net

WOOD SHOW STOCK

KYLE WOOD
2350 Bagby at Unit 7302
Houston, TX 77006
260-578-1769
woodshowstock@gmail.com

HILL COUNTRY SHOW LAMBS

RODNEY & SHERRI YATES
PO Box 1491
Boerne, TX 78006-1491
830-446-9031
sherriyates@yahoo.com

ROCKIN C FARMS

851 Fm 179
Tahoka, TX 79373
806-470-5027
mgclem1@yahoo.com

HAWS CLUB LAMBS

117 Haws Circle
Beeville, TX 78102
361-446-1499
nlhaws@yahoo.com

UTAH

JOHN ALLRED/CLAY ELLIOTT
642 E 2500 S
Vernal, UT 84078
575-635-6340
johna@easilink.com

DIRECTORY CONTINUED

CARL & DIANE BOTT

PO Box 432
Castle Dale, UT 84513
435-381-2189
ccbott@etv.net

BL HOLGATE HAMPSHIRE

BRENT HOLGATE
PO Box 144
Altamont, UT 84001
435-823-0762
clemandgator@gmail.com

JIM JENSEN

5162 S 800 W
Spanish Fork, UT 84660
801-794-9825
jim.jensen@aggiemail.usu.edu

WADE JENSEN

PO Box 412
Cleveland, UT 84518
435-653-2361

SHELBY JORGENSEN

1805 W 116
Mt. Pleasant, UT 35729
435-469-1639
sjorgensen2425@gmail.com

ALVIN & CATHY MCNEIL

2295 N SR 32
Kamas, UT 84036
435-640-8172

MILLER CLUB LAMBS

JOSH MILLER
507 North 100 East
Monroe, UT 84754
435-893-1950
joshmiller0315@gmail.com

VICKIANN & GAIL MITCHELL

PO Box 924
Fillmore, UT 84631
435-253-0982
vickiannmitchell@icloud.com

OLSEN FAMILY SHEEP

JOHN OLSEN
1151 S 2230 E
Spanish Fork, UT 84660
801-360-6605
johnolsenaccounting63@gmail.com

JOSEPH OLSEN

8436 S Woodland Hill Dr
Spanish Fork, UT 84660
801-361-9493
jolsenrams@yahoo.com

DOUBLE L SHEEP CORP

LARRY OR LINDA PAULY
3150 S 2500 W
Delta, UT 84624
435-864-1884
lpauly44@gmail.com

ROBBINS BROTHERS HAMPS

JESSE & DAVID ROBBINS
137 S 300 E
Santaquin, UT 84655
949-382-8992
jessg.robbins@gmail.com

K & K GRAMPS HAMPS

KETCHER & KUTTER WADE
429 S 3600 E
Heber, UT 84032
435-671-6060
mirrorlakestation@gmail.com

FLYING V LIVESTOCK

VICTORIA CARROLL
417 S Westview Drive
Cedar City, UT 84720
435-590-2718
flyingvlivestock@yahoo.com

VIRGINIA

DOMINION LIVESTOCK

JOHN AREHART
78 Oak Springs Lane
Staunton, VA 24401
540-241-5285
dominionlivestock@yahoo.com

JACK & KINLEY BEGOON

164 Stonewall Lane
Grottoes, VA 24441
540-430-1716
begoonfarm@gmail.com

FOX GRAPE FARM

WILLIAM S & WANDA BROCKMAN
PO Box 55
Piney River, VA 22964
434-277-5019

DANA GOCHENOUR

3505 Back Road
Woodstock, VA 22664
540-335-2210
dgochen@vt.edu

HEISHMAN HAMPSHIRE

1747 Conicville Rd
Mount Jackson, VA 22842
540-477-3822
adheish@vt.edu

H & K HILLTOP FARMS

JAMES MUMAW
5594 Green Hill Rd
Linville, VA 22834
540-438-1723
james.a.mumaw@ampf.com

WASHINGTON

MIKE CUMMINGS HAMPSHIRE

31006 68th Ave NW
Stanwood, WA 98292-9646
360-629-2994
dannanc72@yahoo.com

CODY & JACOB DOCKTER

7720 73rd PL NE
Marsville, WA 98270
425-870-5621

SHANNA FLOWER

3108 Hunt Road
Oak Harbor, WA 98277
360-770-8857
flower3_9997@yahoo.com

TROY HASLEM

23627 NE 57th Ave
Battle Ground, WA 98604
360-687-8784
sheephamp@aol.com

HICKMAN'S HAMPSHIRE

JIM & JOY HICKMAN
1295 Bussell Road
Walla Walla, WA 99362
612-860-9701
hickmanshamps@gmail.com

LEFEVER HOLBROOK RANCH

MATT, MADISON & CONOR HOLBROOK

1098 HWY 97
Goldendale, WA 98620
509-773-3443
papa_pklh@yahoo.com

PAINTED K HAMPSHIRE

HEATHER KLINE
37581 State Rt 20
Oak Harbor, WA 98277
360-320-2626
klinephotography2010@gmail.com

LINDA MASTIN

4202 Freeman Rd E
Fife, WA 98424
253-922-5963
mastin.linda@gmail.com

PUMPHREY HAMPS

THE PUMPHREY FAMILY
356 Chamberlain Rd
Walla Walla, WA 99362
509-529-0140
c_pumphrey@hotmail.com

BRANDON ROBERTS

18901 NE 399th Street
Amboy, WA 98601
360-904-5135

SCHERER CLUB LAMBS

JEFF & DEANNE SCHERER
21903 Zenkner Valley Rd
Centralia, WA 98531
360-736-0463
scherer.d@sgcgeneral.com

SWEENEY HAMPSHIRE

JEFF, CHRIS & KYLE SWEENEY
39614 N Spotted Rd
Clayton, WA 99110
509-703-3728
sweeneyclayton@gmail.com

V-8 SHEEP

LARRY VERHAGE
6206 North Harvard Road
Newman Lake, WA 99025
509-760-5743
lverhage64@gmail.com

RENE & MATHEW WIGEN

22807 NE 109th St
Vancouver, WA 98682
530-304-0239
rwigen1829@wavecable.com

RAINBOW MEADOW FARMS

434 Cispus Rd
Randle, WA 98377
360,947-9853
larrychristensen@gmail.com

WISCONSIN

ALF HAMPSHIRE

JOHN & BRITTANY ALF
2417 W Stark Rd
Janesville, WI 53545

BAA BAA ACRES

ROD & TERRY ANDERSON
W5769 Cty Rd S
Juneau, WI 53039
920-386-2540
andersons1978@att.net

FLINTSTONE FARM

KEARE ARMENTA
2101 Sugar River Rd
Verona, WI 53593
608-293-3060
kearew@hotmail.com
SAVANNAH & WYATT BAILEY
E2539 County Road K
Casco, WI 54205
920-370-5164
chevymalibu12@icloud.com

AMY BARTH

827 Rock Church Rd
Livingston, WI 53554
608-341-8286
sunset@yousq.net

4 SISTERS FARM

AMY BEDARD
W9375 School Rd
Hortonville, WI 54944
920-915-3380
amy.bedard@appletm.org

JECONIAH BEYRER

E8298 1205 Ave
Colfax, WI 54730
715-658-1555
3ofthem@chibardun.net

BIRSHBACH'S HAMPS

STEVE BIRSCHBACH
802 E Pioneer Rd
Fond-Du-Lac, WI 54935
920-251-4919
stbirsch80@hotmail.com

BLUME CLUB LAMBS

BRANDON & MIKE BLUME
2225 Cty Rd A
Mineral Point, WI 53565
608-341-6302
blumer1989@hotmail.com

MIKE COTTRELL

W 1450 Town Rd
Depere, WI 54115
920-833-7139

GEORGESON FAMILY

N3871 Scheppert Rd
Fort Atkinson, WI 53528
920-728-2891
lgagteacher@hotmail.com

DREAM HILL FARM

BRIAN & JOAN GERTH
N 8389 660th St
Riverfalls, WI 54022
715-308-2222

CLM SHOW LAMBS LLC

CRAIG GREEN
1913 Wayside Road
Greenleaf, WI 54126
920-371-7233

COLBY & LIBBY HASHEIDER

510114 A County Rd C
Sauk City, WI 53583
608-393-3686
jennifer.hasheider@southprairiehealthcare.org

JOHNSON FAMILY SHOW STOCK

BILLY, JEFF & CHRISTINA JOHNSON
W 8778 Kikenney Road
Delavan, WI 53115
262-208-0236
johnsonfamilyshowstock@gmail.com

2019 AHSA MEMBERSHIP DIRECTORY

SARA, JACEE & JUSTIN JOHNSON

N 6196 Johnson Road
Delavan, WI 53115
608-201-5742
ewehoo_200@yahoo.com

LEANNE KIMBALL

W4655 890th Ave
Baldwin, WI 54002
715-928-1448
lterpstra@hotmail.com

RICHARD KRACKOW

PO Box 233
Arcadia, WI 54612
608-343-2899
rkdrealt@triwest.net

KRINSKY HAMPS

REBECCA KRINSKY
W3696 Willow Bend Rd
Lake Geneva, WI 53147
262-325-3476
krinskyhamps@gmail.com

LANGER FARMS

MICHAEL LANGER
W-8124 570Th Ave.
Ellsworth, WI 54011
715-273-3439
jjmlanger@gmail.com

LINDOW FAMILY

N 5147 Hiline Ave
Chili, WI 54420
715-683-6897
anklindow@yahoo.com

BIG SPRING HAMPSHIRE

SHAWN & MELANIE LOMBARDO
21 4th Street
Prairie Farm, WI 54762
651-271-0352
cmc_mgehrman@hotmail.com

SETH LOUDENBECK

613 Southwond Dr
Lake Geneva, WI 53147
262-325-1115
sloudenbeck@hotmail.com

ETHAN & OR BRADY MEUDT

10040 N CTY KK
Milton, WI 53563
608-912-2933
ericmeudt@yahoo.com

GREENWAY FARM

JON & LAIRD MORK
W6402 690th Ave
Beldenville, WI 54003
715-222-0700
morklsb@gmail.com

SHAWN O'DONOVAN

N11037 CTY Rd I
Waupun, WI 53963

EMILY PETZEL

2037 180th
Centuria, WI 54824
715-475-9922
epetzel@gmail.com

IMPACT HAMPS

BRIAN REILLY FAMILY
17435 Cty Rd W
Shullsburg, WI 53586
608-482-2697
breilly.impact@gmail.com

RIDGEVIEW FARM

KEVIN RIEMER & FAMILY
12160 N Wauwatosa Rd
Mequon, WI 53097
262-243-3069
kevinriemer@aol.com

STEVA ROBINSON

PO Box 95
Belmont, WI 53510
574-527-0967
stevarobinson@gmail.com

MJR HAMPSHIRE

MARK ROEMBKE FAMILY
3504 Country Aire Dr
Cedarburg, WI 53012
262-707-0032
mjrhamps@hotmail.com

R J ROEMBKE FAMILY

3696 Country Aire Dr
Cedarburg, WI 53012-9206
262-377-1491
rsmrke@att.net

RUPNOW FAMILY HAMPSHIRE

SUSAN RUPNOW
430 Highview Lane
Columbus, WI 53925
715-590-4660
profshowsupply@aol.com

BRYCE SHERWIN

W4498 455th Ave
Ellsworth, WI 54011
715-410-8287
gmklecker@hotmail.com

BRANDT & BECKETT SPILDE

2800 Wildflower Road
Stoughton, WI 53589
608-772-3697
kentspilde@icloud.com

TODD & KELLY SQUIRES

32578 Fulda Ave
Camp Douglas, WI 54618
608-387-6315
kellyollendick@gmail.com

AL STECK FAMILY

N6745 Cty Rd M
Holmen, WI 54636
608-792-9473
asteck@centurytel.net

JEOFFERY STEVENS

6402 Buss Rd
Clinton, WI 53525
608-676-5417
dr.jeoffstevens@gmail.com

NATHAN, LAUREN & DAVID THOMPSON

2628 110th Avenue
Woodville, WI 54028
715-307-1377
kthompson@bwsd.k12.wi.us

METRO HAMPS

THORSON FAMILY
W 460 Sydo Rd
Columbus, WI 53925
920-344-1235
metrohamps@hotmail.com

UNIVERSITY OF WISCONSIN

C/O TODD TAYLOR
W 4857 Meek Rd
Arlington, WI 53911
920-344-1235
metrohamps@hotmail.com

JOSHUA VOIGT

W6644 COUNTY RD W
JUNEAU, WI 53039
920-210-1965
hickjv@gmail.com

MARK & KAREN VORNHOLT

W7152 Tree Rd
Neillsville, WI 54456-8697
715-743-7152
fairviewfarm@gmail.com

CORNERVIEW CLUB LAMBS

ROY & DOUG WILSON
W5729 Cr Rd B
Shawano, WI 54166
608-215-4490
cvclublams@hotmail.com

SUEHS HILLSIDE HAMPS

SUEHS FAMILY
E5372 Swan Rd
Manawa, WI 54949
920-596-2712
mksuehs@wolfnet.net

D & M SHOW LAMBS

806 Grant St
Beloit, WI 53511
608-290-2187
ndvish882@gmail.com

UWRF FARMS

C/O HEATHER TURNER
129 S Glover Rd
River Falls, WI 54022
608-475-3436
uwrf.mannvalleyfarm@outlook.com

WEST VIRGINIA

BARBARA DAVIS

2852 Flinderation Rd
Salem, WV 26426
304-641-3055
ddshowlambs@gmail.com

BRUSHY MOUNTAIN LIVESTOCK

TRAVIS & TERESA HEAVNER
623 Skiles Pitsenbarger Rd
Franklin, WV 26807
304-668-9171
theavner40@hotmail.com

FORT DONNALLY FARM

JOHN JOHNSTON
HC 40 Box 16
Lewisburg, WV 24901
304-645-2769

JONATHAN RITCHIE

223 Hill Top View LN
Ridgely, WV 26753
304-726-4230

WYOMING

BERG FAMILY HAMPSHIRE

3744 Chuckwagon Rd
Cheyenne, WV 82009
307-638-8103

brenda.berg44@gmail.com

WESTON BORCHER

1017 Rd 14
Powell, WY 82435
307-272-5285
borcher_23@hotmail.com

SPY CLUB LAMBS

MORGAN SANCHEZ &
BROOKE HOWARD
199 Palamino
Bear River, WY 82930
307-799-8780

spyclublambs@live.com

BUTLER BROTHERS LIVESTOCK

AUSTIN, DAWSON & DALTON
BUTLER

PO Box 40
Hulett, WY 82720
307-467-5698

butlerbroslivestock@gmail.com

UNIVERSITY OF WYOMING

LARAMIE RESEARCH &
EXTENSION CENTER

470 Hwy 230
Laramie, WY 82070
719-314-6571
kkoepke@uwyo.edu

JEFFREY CLUB LAMBS

SHAWN JEFFREY
2580 Indian Hill Rd
Cheyenne, WY 82009
307-421-7354
wywindyacres@gmail.com

BAM SHEEP CO

BRYCE MCKENZIE
550 South Pinnacle Dr
Buffalo, WY 82834
307-217-1510
bamsheepco@yahoo.com

ROBERT M & SHEA ROOF

390 Road 146
Carpenter, WY 82054
307-649-2402
bob.roof@gmail.com

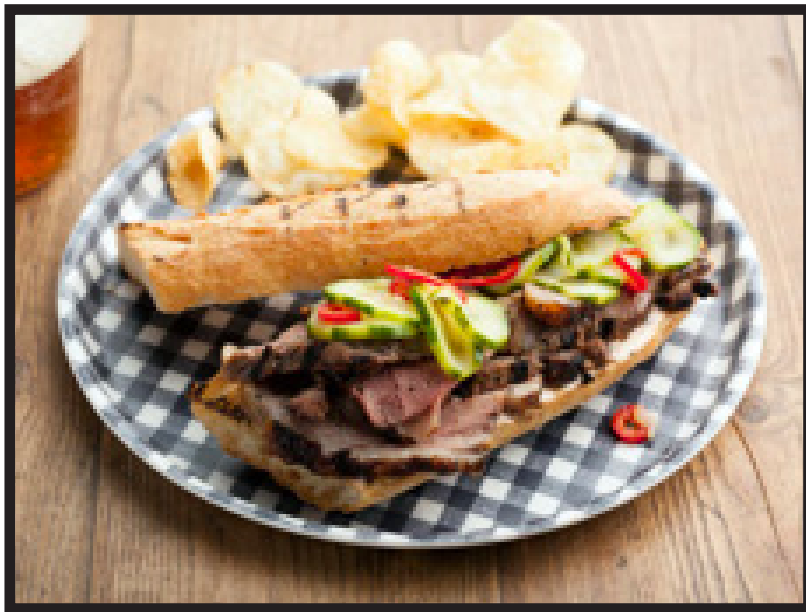
STEWART CLUB LAMBS

STEWART FAMILY
13721 Meadow Lane
Evansville, WY 82636
307-266-0319
jackson.stewart@trueecos.com

INDEX TO HEARTBEAT ADVERTISERS

B	BOBENDRIER BOYS BOBENDRIER HAMPSHIRE	INSIDE FRONT COVER	G	GILMORE-DAVISON HAMPSHIRE	BACK COVER	K	KJELDGAARD HAMPSHIRE KLEINERT HAMPSHIRE	8 34
C	CHAPIN HAMPS	26	H	HELD'S HAMPSHIRE HIGHLAND HAMPSHIRE HOWELL CLUB LAMBS	11 21 39	M	MIDWEST STUD RAM SALE MUMM HAMPSHIRE	24 22
D	DOUBLE F CLUB LAMBS	12				N	NELSON HAMPSHIRE NIEMEIER HAMPSHIRE NEWLAND HAMPSHIRE	25 17 33

GRILLED LAMB SANDWICHES TOTAL: 2 HR | YIELD: 4 - 8 SERVINGS



Directions:

1. Make the marinade by finely mincing the capers, oregano and garlic together. Add to a small bowl along with the yogurt, olive oil, lemon zest and some salt and pepper, stirring until well combined. Place the lamb in a large resealable bag and pour in the yogurt marinade. Mix it around so the lamb is completely coated all over. Squeeze out any air, reseal the bag and place in the refrigerator for at least 30 minutes, or up to overnight.
 2. Preheat the grill to medium-high heat.
 3. When the lamb is marinated, remove it from the bag and wipe off any excess with paper towels. Unfold the lamb, drizzle with a little olive oil and sprinkle well with salt and pepper on both sides; this will help form a nice crust. Grill for about 15 minutes, then flip once and cook for another 12 minutes on the second side until cooked through and you have some color on the lamb. When done, remove from the grill, tent with foil and let rest for 10 to 12 minutes before carving across the grain into thin slices.
 4. Take the baguette and split horizontally lengthwise so you have long halves. Place on the grill to warm the bread through and get slightly crisp, about 2 minutes.
 5. To assemble the sandwiches, smear the bread with Harissa Mayo, stack with slices of lamb and Quick Pickled Sweet Cucumbers. Place the top of the baguette on and slice the sandwich into quarters.
- Harissa Mayo: Mix the mayonnaise, sour cream, harissa, vinegar and cumin together in a large bowl and stir with a whisk to combine. Taste for seasoning and add salt and pepper as desired. Refrigerate and serve smeared on lamb sandwiches.

Quick Pickled Sweet Cucumbers:

Add the cucumber slices and chile slices to a medium bowl and toss to combine. In a medium saucepan, add the vinegar, sugar, ½ water and salt/ Heat gently, stirring, just until the sugar and salt dissolve. Pour over the cucumbers and chiles in the bowl. Set aside to marinate at least 15 minutes before serving.

P	PINE LAWN FARMS	18
----------	-----------------	----

R	RIKOW HAMPS	INSIDE BACK COVER
----------	-------------	-------------------------

S	SD STATE UNIVERSITY STORMS HAMPSHIRE SYDELL	10 15 19
----------	---	----------------

Ingredients:

½ tablespoon capers | 1 teaspoon fresh oregano leaves
4 cloves garlic | 2 cups plain unsweetened yogurt
2 tablespoons extra-virgin olive oil, plus more for grilling
½ teaspoon lemon zest | Salt and freshly cracked black pepper
One 3 to 4-pound leg of lamb, butterflied | 1 sourdough baguette (use 2 if serving 8)

Harissa Mayo:

½ cup mayonnaise | ½ cup sour cream
2 tablespoons store-bought harissa paste | ½ teaspoon red wine vinegar
¼ teaspoon ground cumin | Salt and freshly cracked black pepper

Quick Pickled Sweet Cucumbers:

1 hothouse cucumber, finely sliced | 1 teaspoon kosher salt
½ Fresno chile, halved lengthwise, seeded if desired and finely sliced
¾ cup sugar | 1 cup white vinegar



A Salute to our Customers!



Lot 12 - Rikow 1139

BD: 9/9/2018 • Sire: Fall Guy • MGS: Peterson Interesting
Thanks to Alf Hampshires for your purchase of this
this exciting fall ewe lamb!

Thank you!

To all our 2019 Rikow Hamps Online Sale
buyers and bidders! We wish you the best of luck
with your new purchases. - Dick



Lot 2 - Rikow 1129

BD: 9/6/2018 • Sire: Fall Guy • MGS: Sanford M944
Good luck to Rodney Scheller on your
purchase of this elite stud ram prospect.



Lot 7 - Rikow 8051

BD: 3/2/2018 • Sire: Alf 128-17 • MGS: Knapp 820
Thanks to Spoonster Hamps for your purchase of this
this promising yearling ewe!

RICHARD KRACKOW
ARCADIA, WI • RKDREALT@TRIWEST.NET • PH: 608.343.2899

WWW.RIKOWHAMP.COM

HAMPSHIRE HEARTBEAT
420A Lincoln, P.O. Box 231
Wamego, Kansas 66547

Change Service Requested



Plan Today
Excel Tomorrow

G-D

Gillmore - Davison Hampshires

Tom Gillmore and Phyllis Davison ~ Beatrice, NE
Tom phone ~ 402-450-4398 ~ Phyllis 316-841-8223,
email: tgillmore.tg@gmail.com ~ phyldavison@gmail.com