

HAMPSHIRE

Winter 2019

Heartbeat





stealing the show

2018 NAILE NATIONAL CHAMPION HAMPSHIRE RAM
Bobendrier 18-05 "Rare Reputation"

Thank you to all of the following buyers, and also to everyone who bid on our sheep in 2018. We are very humbled by your confidence in our breeding programs.

Bobendrier Hampshires Buyers:

Evan & Nash Arthur, IN	Mumm Hampshires, IL
Mike Barnes, OH	OHS Hampshires, IL
Grant Basting, IL	David Pinckney, NY
Randy Berens, SD	Matt Pinckney, NY
Creekside Hampshires, MN	Adel Ragheb, MN
DLT Family Hampshires, NE	Ram'n Acres, Rodney Scheller, MN
Ty Fuller, SD	WM Taylor, KY
Josh Kirchenbauer, MN	Owen Torrance, IL
Betty Learn, OH	Charlotte & Anthony Torre, OH
MHW Farms, IA	

LOUISVILLE HIGHLIGHTS:

Grand Champion Ram "Rare Reputation"
Best Headed Ram "Rare Reputation"
Champion Young Flock
Champion Mixed Pair
1st: Jan. Ram Lamb, Pair Ewe Lambs, Pair Ram Lambs
2nd: Fall Ewe Lamb
3rd: Jan. Ewe Lamb, Jan. Ram Lamb



2018 NAILE RESERVE JUNIOR CHAMPION HAMPSHIRE RAM
Bobendrier Boys 18-45 RR

Bobendrier Boys Buyers:

Samantha Stone, MN
John Hindle, MA
Blair Summey, CA
David Pinckney, NY
Ken Jensen, MN
Howard Christensen, MN
MHW Farms, IA
Evan & Nash Arthur, IN
DLT Family Hampshires, NE
Adel Ragheb, MN
Ram'n Acres, Rodney Scheller, MN

LOUISVILLE HIGHLIGHTS:

1st February Ram (Reserve Junior Champion)
2nd Pair Yearling Ewes
3rd Fall Ram
3rd Pair Ram Lambs
5th Yearling Ewe, Class 1

Special thanks to Craig Fleck and James Kamfloth for all of their professional help at Louisville.

**Quality breeding stock always available | On the farm prices to fit anyone's budget
Money-back guarantee | "Spider" free | Honest birthdates | Guaranteed at least one R**

Bobendrier Hampshires

1607 90th Ave.
Pipestone, MN 56164
jcbobendrier@gmail.com
507.825.4072

SOLUTIONS
for
Success

Bobendrier Boys

1351 Highway 75
Pipestone, MN 56164
shebob8@gmail.com
507.215.0334

Check our website, bobendrierhampshires.com for availability.

CONTENTS

- 4** **CALENDAR OF EVENTS**
A list of upcoming Hampshire events.
- 5** **PRESIDENT'S MESSAGE**
Updates from Scott VanSickle.
- 6** **MIDWEST STUD RAM SALE**
The schedule of the 2019 Midwest Sale Schedule.
- 9** **AHSA STAFF APPLICATION**
Information for the Director of Member Services position.
- 10-11** **RACHEL OLVER FEATURE**
A feature on Rachel Olver
- 13** **GOAL SETTING & BREAKING**
An article from Dr. Alison Crane.
- 14** **AHSA ONLINE SALE ENTRY**
The online sale entry form for ASHA.
- 19** **JUNIOR HAMPSHIRE WETHER SHOW RESULTS**
The results from Junior Hampshire Wether Show.
- 20** **MIKE HARMS FEATURE**
A feature on Mike Harms.
- 22-32** **NATIONAL HAMPSHIRE SHOW RESULTS**
Results from the Louisville National Hampshire Show.
- 28** **REGISTRATIONS**
Registrations by Member & State plus Transfers by Members.
- 34** **FINAL FUTURITY STANDINGS**
The final results from the AHSA's Futurity.
- 35** **NEW MEMBERS**
A list of new members from January 2018 to February 2019.
- 35** **ALL AMERICAN JUNIOR SHOW**
Information regarding the AAJS.
- 36** **AHSA ONLINE SALE**
Information for the online sale.
- 38-39** **YOUTH CONNECTION**
Article on By-Products of Sheep.
- 40-41** **STATE HAMPSHIRE ASSOCIATIONS**
Officer Information.
- 43-44** **AHSA EWE LAMB FUTURITY RULES**
Results from the Junior National Hampshire Show in Louisville, KY.
- 46** **MIDWEST JUNIOR PREVIEW SHOW**
Information for The Midwest Junior Preview Show.
- 49** **2019 SCHOLARSHIP RECIPIENTS**
The recipients for the 2019 Scholarship.
- 51-52** **AHSA MEETING MINUTES**
Minutes from the 19th Annual Meeting.

Calendar of Events

MARCH

5 Double F Online Sale hosted by wlivestock.com
19 Double F Online Sale hosted by wlivestock.com
29-30 Illini All Breeds Sale, Springfield, IL - Banner Sale Management

APRIL

6 Adams & Kleinert Online Club Lamb Sale & Open House hosted by wlivestock.com
8 Ebert Sheep Farm - 49th Annual Production Sale hosted by wlivestock.com
17 Double F Online Sale hosted by wlivestock.com
25 Heart of a Champion Online Hampshire Sale hosted by livestock.com
28 Rikow Hampshires Online Sale hosted by wlivestock.com
30 Herring Hampshires Online Sale hosted by wlivestock.com
30 AHSA Online Sale hosted by wlivestock.com

MAY

1 SDSU Hampshire Online Sale hosted by wlivestock.com
2 Caskey's Pine Lawn Farm Online Sale hosted by wlivestock.com
2 Woolly Hollow Farm Online Hampshire & Tunis Production Sale hosted by wlivestock.com
3-4 Maryland Sheep & Wool Festival All Breeds Sale Banner Sale Management
4 Kleinert Hampshires Online Production Sale hosted by wlivestock.com
9-11 Eastern Regional Hampshire Sale - Eaton, OH Banner Sale Management
15 Deadline for Spring Hampshire Heartbeat
25-26 Great Lakes All Breeds Sale - Wooster, OH Banner Sale Management

JUNE

1 Midwest Junior Preview Show - Sedalia, MO
10 Ebert Sheep Farm Ram & Ewe Sale hosted by wlivestock.com
11 AHSA Online Sale hosted by wlivestock.com
11 Double F Online Sale hosted by wlivestock.com
24-29 National Hampshire Sale- Sedalia, MO Heartland Group

JULY

3-7 All American Junior Show- Hutchinson, KS
19-21 Northeast Youth Sheep Show- West Springfield, MA

Official Publication of the American Hampshire Sheep Association

420A Lincoln

P.O. Box 231

Wamego, Kansas 66547

Ph: 785-456-8500 Fax: 785-456-8599

asregistry@gmail.com • www.hampshires.org

EXECUTIVE SECRETARY: Jeff Ebert

OFFICE MANAGER: BECKY WALTON

STAFF: JANETTE FUND, JOELLE SYLVESTER, KIM GEORGE, MACKENZIE PADGETT &

JENNIFER WENDEROTT

AHSA Board of Directors

President: Scott VanSickle

Vice President: Brent Larson

DISTRICT 1 - Dina King

(707) 322-3469 - dinamking@hotmail.com

1st term expires in 2021

DISTRICT 2 - Jason Simpson, CO

(970) 371-0276 - jsimponcl@aol.com

2nd term expires 2020

DISTRICT 3- Randy Pirtle, OK

(918) 440-4553 - randy.pirtle@okstate.edu

3rd term expires 2019

DISTRICT 4 - Brent Larson, SD

(605) 633-1561 - larsonb76@gmail.com

2nd term expires 2019

DISTRICT 5 - Ted Van Horn

(620) 285-9486 - ted.vanhorn@ks.usda.gov

1st term expires in 2021

DISTRICT 6 - Debbie Deal, OH -

(330) 607-1347 - ddeal1957@aol.com

3rd term expires 2020

DISTRICT 7 - Tom Bobendrier, MN

(507) 215-0334 - shebob@svtv.com

3rd term expires in 2021

DISTRICT 8 - Katelyn Parsons

(413) 387-2726 - katelyn@mfbf.net

1st term expires 2019

AT-LARGE - Tom Bobendrier, MN

(507) 215-0334 - shebob@svtv.com

3rd term expires in 2021

AT-LARGE - Derick Miller, TX

(806) 239-3670 - millerpecanfarms@gmail.com

2nd term expires 2019

AT-LARGE- Jason Mumm, IL

(217) 377-2073 - meganmumm@hotmail.com

1st term expires 2020

Office Fee Schedule

A. MEMBERSHIPS

1. New Senior Membership	\$25
2. Annual Senior Dues	\$25
3. New Junior Membership	\$15
4. Junior Dues	\$15

B. REGISTRATIONS

Postmarked Sept 1 - April 30	
1. Animals under 12 months	\$4
2. Animals over 12 months	\$8
Postmarked May 1 - August 31	
1. Animals under 12 months	\$6
2. Animals over 12 months	\$12

C. TRANSFERS

1. Under 90 Days (from date of sale)	\$10
2. Over 90 Days (from date of sale)	\$20

D. DUPLICATE CERTIFICATE

E. RUSH FEE (PER TRANSACTION)

\$5
\$5

IF YOU WOULD LIKE TO HAVE YOUR SHOW OR SALE LISTED IN OUR CALENDAR OF EVENTS AND ON THE HAMPSHIRE WEBSITE, PLEASE EMAIL US THE INFORMATION. FOR SALES TO BE LISTED YOU MUST BE SELLING REGISTERED HAMPSHIRE.

Greetings from your President

Hampshire Breeders and Members,

I enjoy scavenging for old agricultural books at antique stores wherever I go. Recently, I picked up a first edition of Sheep Production, printed in 1927, the author being Levi Jackson Horlacher. This exhaustive resource discusses many aspects of sheep production and evaluates several breeds, including Hampshires. The native home to our breed is Hampshire county England, where in the early 1800's several breeds were crossed to form this composite breed. Hampshire sheep were exhibited the first time at the Show of the Royal Agricultural Society of Oxford in 1840 under the name of West Country Downs. Breeding and crossing continued, when in 1861 the Royal Agricultural Society of England recognized the Hampshire as a distinctive breed. The author later states that they were first imported into America in 1855, when five ewes and a ram were brought to New York. This chapter concludes discussing breed societies, both English and American, which were formed in 1889. At the time of print, the author stated that at the 1926 meeting of the AHSA a committee was appointed to determine the correct type of Hampshire, particularly with reference to the wool covering over the face.

Now jump ahead 93 years, and we have several committees that have been busy preparing for the 2019 season. The show and sale committee, chaired by Debbie Deal, brought before the board a new AHSA internet sale that will be held just prior to NAILE for bred/exposed ewes, ewe lambs and rams. The sale was approved by the board and will make a total of three internet sales, of which any AHSA member in good standing can participate. The committee also suggested keeping the Sedalia youth show another year, hoping that there would be more participation in its second year.

Ted VanHorn, chair of the promotions committee, brought forth several items that needed to be addressed, including those that have been normal items of promotion, but has suggested some new banners to help advertise our breed. Be on the look out for these at regional and national shows and sales. The committee also addressed apparel as well as some new items that we will look into to help advertise our breed. These items will be for sale at a nominal cost.

The junior committee is working with a great junior board to develop new programs for this group. Katelyn Parsons, chair, led a conference call with the junior board and senior committee members in January. Here the group suggested different items that would help motivate junior participation. Several items were discussed, including an essay, video and cooking contest. Logistics of the cooking contest were discussed and it was suggested that maybe a recipe contest might be considered instead. This committee will continue to work with the juniors to facilitate new programs to educate and drive enthusiasm for our youth.

Finally, Tom Bobendrier, gave comments as chair of the futurity committee. Parameters and rules are to remain the same and a showmanship class was discussed. The committee's recommendation and the boards overall opinion was that there would be no showmanship option at this time and it may be reevaluated at the end of the year. We did discuss the need to continue to educate both breeders and young people as to the purpose of this program. The Hampshire office has targeted this issue with a one-page handout that does an excellent job at describing this program. It was handed out last fall at NAILE, is available on the association website, some version will be sent out over facebook (several different times over the course of several months), as well as several other ways to disseminate to our membership.

I appreciate all the hard work that the committees have put in thus far, if you have suggestions, please let Jeff or one of us on the Board know. We are happy to hear from our constituency and always looking for ways to improve our association. I also wanted to say a public goodbye to the board members who termed out last year. Thank you to Lisa Hanson and Phyllis Davison for your contribution to our breed.

Scott VanSickle

ADVERTISING IN THE HEARTBEAT

Printed three times a year

WINTER ♦ SPRING ♦ FALL

You can choose to run an individual ad in a single issue of your choice, or choose a three-issue contract. Contract ads will be placed in three consecutive issues of the Hampshire Heartbeat. Contracts begin with the next available issue and run through the next two consecutive issues. Either an individual ad or a contract can be purchased at any time throughout the year. Prices for both types are listed below or advertisers who provide ads ready for publication will receive a 15% discount on the listed prices. You may find more information at www.hampshires.org.

DEADLINES

Winter Issue: January 15th

Spring Issue: May 1st

Fall Issue: September 15th

Ad size or Placement	Single Issue Price	Three Issue Contract Price
Inside Covers	\$450.....	\$900
2-Page Spread.....	\$550.....	\$1100
Full Page	\$350.....	\$700
3/4 Page	\$300.....	\$600
2/3 Page	\$275.....	\$550
1/2 Page	\$250.....	\$500
1/3 Page	\$210.....	\$420
1/4 Page	\$165.....	\$330
1/6 Page	\$125.....	\$250
1/8 Page	\$100.....	\$200

Featuring Wheaton Hampshires

Introduce yourself & your family

Wheaton Hampshires started 100 years ago as a 4-H project with the Wheaton Brothers – Verness (Lee’s father) and Elwood. Today, Wheaton Hampshires is a combined effort from 3 generations - Lee and Denise along with their two children Megan Ritter and Brant, and their spouses Matt and Samantha. Rounding out the family are five amazing grandchildren - Megan and Matt have three children, Jackson (10), Cole (8), and Brynn (3), and Brant and Samantha have a son Parker (3) and daughter Sawyer (7 months).

Our farm is in Eaton County, MI and has been in our family since the 1870’s. Lee and Denise along with farm manager David Scales live at the home farm while Megan, Matt and their family reside in Fortville, IN. Brant’s family lives about 40 miles from the farm in Caledonia, MI.

Give us a brief description of your Hampshire Flock

We presently run 75 purebred Hampshire ewes along with 100+ crossbred recipient ewes utilized in our embryo transfer program. With over ½ of our lambs coming from our embryo transfer program, we constantly turn over the flock to maintain numbers, selling about 1/3 of our ewe base each year.

Hampshire sheep have a long-standing history with our family and farm. Hampshires have been on the farm continuously since 1957 and prior to that Verness and Elwood raised Hampshires and Oxfords dating back to 1919. Although all of our sheep today are club lamb type, prior to 2009 we also raised frame sheep for many years.

Why did you choose to include registered Hampshires in your sheep operation?

Choosing Hampshires was not really a choice, Verness had an established flock of Oxfords and Southdowns, and when we decided to raise Hampshires again they became Lee’s 4-H project. This expansion happened when Graydon Blank, the Michigan State University sheep extension specialist bought three ewes for us in the prestigious Lakefield Farms dispersal sale in the fall of 1957 - two of the ewes cost \$35 and the third \$40. As they say, the rest is history and Hampshires have become a focal point of our families lives from that day forward.

What advice do you have for people starting out in the sheep business?

This is certainly true of many families engaged in any form of livestock enterprise - If it isn’t the focus of the families efforts you won’t make it very far. Make it a family project and purchase the best females you can afford, they are the cornerstone of every decision you will make. With the availability of AI, embryo transfer and now sexed semen, it is possible to gain a foothold in the industry fairly rapidly.

Having an eye for structure and soundness is important, but just as important is a solid, honest evaluation of your own sheep. Appreciate the progress you make, but never be satisfied. There is an old saying that once a man reaches his goal he is going backwards, but there is no danger of this for the livestock breeder, for even the wisest of us, who ever they may be cannot in the course of 100 lifetimes accumulate enough knowledge to create the “perfect one.”

What are one or two items that you have found to be critical for the success of your sheep operation?

A relentless focus on the female side of our flock and becoming comfortable with change. We try to keep things in constant motion, turning the flock over quickly, rarely using a ram for more than 2 years, and never settling for one that just “did a nice job”. We have remained focused on the things that matter most to us, and even when the trends shift we’ve tried not to over-correct and chase the trend.





Who are some people that you credit for your success with Hampshires?

Some of the most influential people were certainly my parents (Verness and Crystal), but beyond them it was the great folks and families that we competed against every summer on the show circuit. We would show at as many as 14 county fairs, as well as, the Michigan State Fair. I'm not sure how many times we've shown against the Wetzel Sisters (now Judy Moore and Linda Harwood) or the Chapman Family here in Michigan. Later Dick Stuart came along and was a great competitor and friend. I've often thought how fortunate I was to grow up at a time of such innocence when your parents would drop you and the sheep off at a fair, usually on a Sunday, and reappear on show day and then move you and the sheep to another fair for the following weeks show. All while also tending to a small dairy herd, making hay, and baling straw.

It wasn't just the freedom to be on your own, a thing that was important, but the learning that went on with that responsibility was vital for my growth as a person and evaluator of livestock. Of course there was a fair amount of goofing off and hilarity that went along with the hard work of feeding, washing and fitting as many as 40-50 head of sheep for each fair.

Fred Buckham of Kalamazoo, MI and the entire Buckham Family were also so critical in encouraging our sheep operation and have become dear friends over the years. Jeff Gordeneer grew up in a house on our farm and started working for us as a ten year old - now with his family he is not only a great friend, but a partner in the industry. Charles and Nancy have remained close friends for years, the relationship and partnership formed years ago were the driving force behind our success in the frame business.

What is your favorite sports team?

We all bleed green and white, MSU Spartans through and through. 3 generations have graduated from Michigan State (Verness, Lee, Megan, and Brant) and the grandkids have green and white aspirations.

What is your favorite food?

When it comes to food - it's all good, some is just better than others.

What is the favorite place you have visited?

Our family has been fortunate to travel quite a lot and we still take a family vacation with all the kids and grandkids, once if not twice a year. In the past few years some of the more memorable trips have been to Italy (Tuscany), Arizona and the Grand Canyon, Cabo Mexico, Disney World, and Northern, MI. For us it's just about getting away and enjoying some time together.

Double
CLUBLAMBS



2019 LAMBS



SIRE LIST

SHOOT YEAH
HOMBRE
MERLIN
KING TUT
MARTIN
KLEINERT 5037
4D LARGE
FAKE NEWS
FEDERAL



ONLINE SALES

MARCH 5
MARCH 19
APRIL 17
JUNE 11

BUCK LAMBS AVAILABLE BY PRIVATE TREATY

ENDRE, BETSY, STEFAN, AND ALLISON FINK
1590 BOONESBORO RD, WINCHESTER, KY 40391
STEFAN: 859-771-8441 ENDRE: 859-559-7765
DOUBLEFLAMB@GMAIL.COM
WWW.DOUBLEFLAMBS.COM

Featuring Mike Harms Family

Introduce yourself & your family

Mike and Dixie Harms, Kelly Harms (daughter) & John Niedermeyer (her husband), Erin Harms (granddaughter) & KC Johnson (her husband), and Scott (son), Katie (his wife), Luke and Ellie Harms (grandchildren).

Give us a brief description of your Hampshire Flock

My brothers Jed and Dan Harms started in Hampshires in the 1960s. In the 1970s, we purchased some Hamps from Don Bischof of Wilsonville, Oregon and some more breeding stock from Charlie and Wanda Daugherty and Hamp City, both from Molalla, Oregon. Early on we used Hubbard and Hogg breeding, along with rams from Heggemeiers, Schlichter, and more recently Char-Land Farms. This year we used a ram from Burns-Hales Livestock, and are very excited with the lambs we got. Due to some changes in the family farm, we've cut back the flock to about 20 ewes. I'm very pleased to see all my grandchildren taking an interest in the Hampshires.

Why did you choose to include registered Hampshires in your sheep operation?

My father and grandfather raised five breeds of purebred sheep from 1930-1960s: Cotswolds, Lincolns, Shropshires, Southdowns, and Oxfords. As the wool market declined, we switched to Hampshires to sell at purebred sales, as commercial sires, and as market animals. We really appreciate the frame and muscling of the Hampshires, and appreciate the capaciousness and good mothering of our Hamps. It's also really important for breeders to register their animals and adhere to a breed standard when they select stock for their flocks.

What advice do you have for people starting out in the sheep business?

Sheep farming is a very rewarding family endeavor, but it does take a big commitment. Be prepared to keep good records and put in some long hours during lambing season. Find an established breeder in your area who can mentor you and teach you good shepherding practices. Establish a good working relationship with a veterinarian with sheep experience. Be sure to pick the type of sheep operation that fits your lifestyle and your farm.

What are one or two items that you have found to be critical for the success of your sheep operation?

We were able to develop great relationships with fellow breeders in our area who were able to help us select good breeding stock and learn more about feeding, fitting, and showing.

Who are some people that you credit for your success with Hampshires?

My father, W.C. "Hap" Harms for his work ethics, knowledge of farming, and his dedication to this family. Don Bischof for his help with selection and feeding. Don Schlichter for the ram "Totally Awesome." Lisa Hanson of Char-Land Farms for several excellent rams. Billy Wade for his feeding and fitting expertise.

What is your favorite sports team?

Oregon State Beavers, Seattle Seahawks, Portland Trail Blazers, and Seattle Mariners.

What is your favorite food?

German food, never met a brat, sausage or sauerkraut I didn't love.

What is the top item on your bucket list?

Watching my grandkids succeed in their lives.

What is the favorite place you have visited?

Rock Island Fish Camp in Little Fort, British Columbia



UPDATE FROM THE AHSA OFFICE

I write these notes as I look out at the latest snow that we received. I know this has been a challenging winter for most of you. I know personally it has been a long one for our area. Hopefully, by the time you read this you have received some spring like days. It has been a very busy few months in our office as we are now serving 34 associations with the newest one being the American Tarentaise Association. We have also received interest from a couple other associations. By serving these associations we are able to spend more of our resources promoting Hampshires. Speaking of promoting Hampshires, your AHSA board has worked hard to continue to develop new ways to continue to give back to our membership. We have several promotional items to give to current and new members. We are sending welcome packets to both new members and new buyers of Hampshires to help get them off to a successful start with their Hampshire enterprise.

The AHSA will again help sponsor the MJPS and AAJS as well as host a junior show at the Midwest Stud Ram Sale on Tuesday evening June 26th. Make plans to bring one or two ewe lambs or yearling ewes to the show and receive buyers' credits, awards and cash. There will also be three divisions of showmanship. We want to grow this into a yearly event to support our Hampshire youth. We also want to encourage our juniors to support our breeders by purchasing futurity nominated ewe lambs. When you purchase these ewe lambs, then show them and turn in futurity forms, you are eligible to win additional prize money from the AHSA. As the AHSA office has grown and developed new programs we have encountered some growing pains. You will find in this issue both an application for a summer intern as well as an application for a director of member services. This is the third year for the summer intern and it has been a very successful program. The director of member services is a new position that is being created to assist the executive secretary with a wide range of tasks. By filling these positions, we will be better equipped to serve our membership in the years ahead.

If you have any questions, concerns or suggestions do not hesitate to contact Jeff at the AHSA office at 785-456-8500 or asregistry@gmail.com

Longtime Hampshire Secretary Passes Away

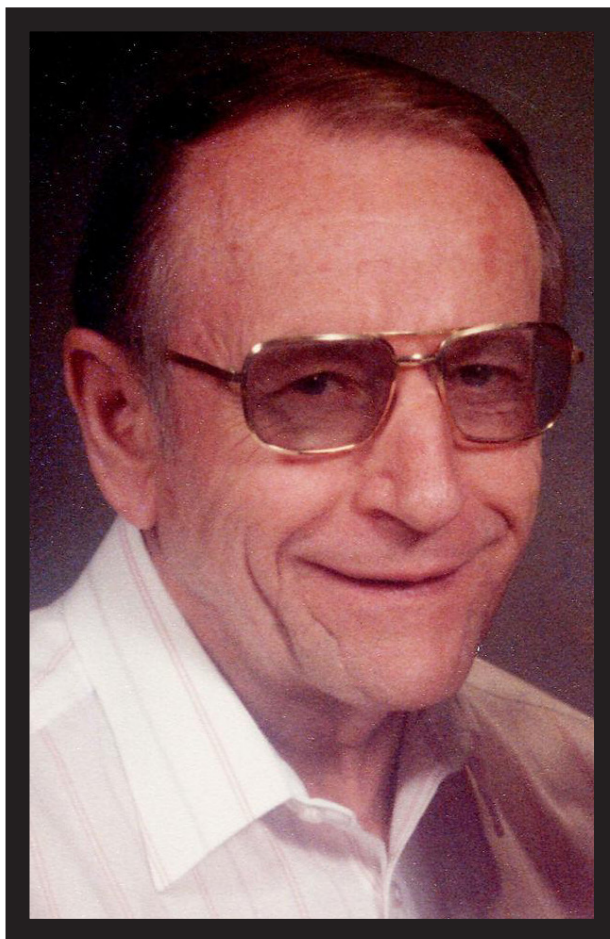
James Clifford Cretcher, 92, of Columbia died Monday, Jan. 7, 2019.

Visitation will be from 1 to 2 p.m. Sunday, Jan. 20, 2019, at Bethel Church, with funeral services following at 2 p.m., officiated by Pastor Jermine Alberty.

Jim was born Sept. 13, 1926, in Logan County, Ohio, to Clifford Nicholas and Mary Delia Hatcher Cretcher, and they preceded him in death. In 1949, he married Joy Carpenter, and she preceded him in death on Oct. 27, 2014. The Cretcher family moved from Oregon to Missouri in 1975, when Jim became Executive Secretary of the American Hampshire Sheep Association. He was a member of Bethel Church for several years.

He is survived by two daughters, Cynthia Kaminski (Bill) of Colorado Springs, Colorado, and Pamela Lancaster (Randy) of Hallsville; four grandchildren, Corrinne Robinson, Tim Ballard, Nicole Huff and Aaron Palmer; four great-grandchildren; two nephews; a brother, Richard Lee Cretcher of Ohio; two nieces; and several grandnieces and nephews.

He was also preceded in death by one sister, Marralene Clara Hyde.



Memorial contributions are suggested to Bethel Church, c/o Bach-Yager Funeral Chapel, 1610 N. Garth Ave., Columbia, MO 65202. Online condolences and tributes may be shared with the family at www.bachyager.com.

CHAPIN HAMPS

Bill & Carole, Derek, Laura,
Clive & Quincy
Coal City, IL 60416
(815) 954-5129 chapinhamps@gmail.com



Champion Ewe –
Illini Bred Ewe Sale 2018

Sound, Honest, Consistent
Hampshire Sheep



Size, Thickness, Bone & Beauty

“Easy Keepers” that will work in
any flock – especially YOURS!



2nd Fall Ram at 2018 NAILE



February 2018 Ewe Lamb
Will be on the 2019 show circuit or may
show up at one of the Ohio or Illinois



Atchison Club Lambs

Owners: Billy, Tara & Maci Atchison

Rt 3 Box 873 Stilwell, Oklahoma 74960

918-289-1627 or 918-289-4032

Herrig Hampshires



Watch for sheep like these for sale this Spring! All of these sheep were sold by us in the past.



Congratulations to Tinleigh Spoonster for her 2nd Place finish in the National Futurity with Herrig 1173



2019 Sales

Herrig Online Sale - April 30th
Ohio Showcase Sale
Midwest Stud Ram Sale
and we will have sheep for sale at the farm all year



David and Jake Herrig

Dave: 507-220-1360 - Jake: 507-227-4228
677 State Highway 267 - Slayton, MN 56172
jakeherrig@yahoo.com - www.herrigsheep.com

We have a nice set of fall and spring lambs sired by Spoonster 17-10, Herrig 1159 and Herrig 1176.

North American International Livestock Exposition National Hampshire Show Results

Louisville, KY - November 14, 2018

Open Show Judges: Fitted- Jim Heggemeier, MO - Slick-Shorn- Jeff Repasky, MN

-FITTED DIVISION-

YEARLING RAMS

1- Edward Niemeier, IL
NIEMEIER 723 3/21/17 603966
S: DOA 14000 RRNN 600372
D: NELSON 15-15 QR 59107D

2- Brad Payne, MO
PLAZA HAMPS 1342 2/19/17 602997
S: PLAZA HAMPS 1130 RRNN 594272
D: KNAPP 828 RR 45160D

3- Jenna Sullivan, CT
SULLIVAN 1708 2/5/17 603246
S: RIKOW 6037 601199
D: STRAWBERRY FIELDS 1320 42911D

4- L&L Hampshires, NE
LARSON L & L 16-651 9/12/16 603458
S: BM WM 539 600184
D: LARSON L&L 14-84 QR NN 49407D

5- Bill Chapin, IL
BOBENDRIER 16-161 NNRR 9/24/16 602637
S: BOBENDRIER 15-60 NNRR 'RAREREBEL' 599125
D: BOBENDRIER 10-110 NNPRR 29270D

SENIOR RAM LAMBS

1- L&L Hampshires, NE
LARSON L & L 17-752 ET 10/15/17 605175
S: LARSON L&L 16-619 601636
D: LARSON L&L 14-101 RRNN 49412D

2- Bill Chapin, IL
CHAPIN 193 RR NN 11/3/17 603895
S: CHAPIN 152 RR NNP 600975
D: CHAPIN 614 NNP RR 54730D

3- Bobendrier Boys, MN
BOBENDRIERBOYS 17-10 19/5/17 604796
S: CASKEY 6422 RR 'STEALTH' 601183
D: BOBENDRIER BOYS 13-36 RR 45633D

4- Jenna Sullivan, CT
SULLIVAN 1802 9/14/17 603802
S: STRAWBERRY FIELDS 1626 600957
D: QUAM 5-235 RRNN ET 57052D

5- Heishman Hampshires, VA
HEISHMAN 17-60 RRNNP 10/1/17 604392
S: LARSON L&L 14-86 QRNN 597712
D: HOPE 10-25 NNPRR 25669D

SENIOR CHAMPION RAM

Edward Niemeier, IL
NIEMEIER 723 3/21/17 603966
S: DOA 14000 RRNN 600372
D: NELSON 15-15 QR 59107D

RESERVE SENIOR CHAMPION RAM
L&L Hampshires, NE
LARSON L & L 17-752 ET 10/15/17 605175
S: LARSON L&L 16-619 601636
D: LARSON L&L 14-101 RRNN 49412D

JANUARY RAM LAMBS

1- Bobendrier Hampshires, MN
BOBENDRIER 18-05 NNP RR
'RARE REPUTATION' 1/2/18 604148
S: BOBENDRIER 15-60 NNRR 'RAREREBEL' 599125
D: BOBENDRIER 12-97 NNP RR 41431D

2- Tinleigh Spoonster, MO
SPOONSTER 18-01 1/5/18 604804
S: BAA BAA ACRES ANDERSON 236 602360
D: MUMM 1556 54705D

3- Bobendrier Hampshires, MN
BOBENDRIER 1819 NNRR
'RARE JD' 1/3/18 604150
S: CASKEY 6422 RR 'STEALTH' 601183
D: BOBENDRIER 16-32 NNP RR 61617D

4- Rikow Hamps, WI
RIKOW 8035 1/10/18 603971
S: RIKOW 6064 602211
D: J AND E HAMPS 7-18 RR 98057C

5- Danielle Houghtaling, SD
HOUGHTALING 18-795 RRNN 1/23/18 604480
S: PULLIN 1619 600907
D: HOUGHTALING 13-432 QR 46437D

6- Jenna Sullivan, CT
STRAWBERRY FIELDS 1804 1/27/18 605147
S: STRAWBERRY FIELDS 1522 599783
D: STRAWBERRY FIELDS 1506 57612D

7- Barret Marshall, SD
BM WM 802 1/1/18 605160
S: LARSON L&L 16-613 601633
D: BM WM 469 58562D

8- McTaggart's Hampshires
QUAM 828 RRNN 1/10/18 604087
S: KASEY KZ-240 602816
D: QUAM 11252 RRNN 44507D

9- Brandt Spilde, WI
RIKOW 8040 1/12/18 603955
S: RIKOW 6063 'FALL GUY' 602210
D: KRACKOW RIKOW 3030 ET 45184D

FEBRUARY RAM LAMBS

1- Bobendrier Boys, MN
BOBENDRIERBOYS 18-45 RR 2/1/18 604799
S: CASKEY 6422 RR 'STEALTH' 601183
D: BOBENDRIER BOYS 15-55 RR 58383D

2- Kjeldaard Farms, NE
KJELDGAARD 18-953 RR ET 'ABSOLUT'
2/4/18 604283
S: WILLWERTH RED 157 600420
D: KJELDGAARD 15-839 RR 59247D

3- Jenna Sullivan, CT
STRAWBERRY FIELDS 1806 2/2/18 605247
S: STRAWBERRY FIELDS 1522 599783
D: BOBENDRIER 15-67 NNP RR 55346D

4- Pine Lawn Farm - Caskey Family, MN
CASKEY 8563 RR 2/13/18 605102
S: CASKEY 7568 RR 603528
D: CASKEY 5551 RR 58666D

5- Brad Payne, MO
PLAZA HAMPS 1400 2/9/18 604497
S: HELD 17-1893 RR-NNP 602279
D: PLAZA HAMPS 1125 RRNN 32447D

6- Ashton Daniels, MO
PLAZA HAMPS 1388 2/4/18 604491
S: BAABAA ACRES ANDERSON 219 RR 601507
D: PLAZA HAMPS 1215 50086D

7- Bill Chapin, IL
CHAPIN 199 RR NN 2/17/18 603899
S: CHAPIN 152 RR NNP 600975
D: HELD 11-1218 RR 36877D

8- Pine Lawn Farm - Caskey Family, MN
CASKEY 8569 RR 2/13/18 605103
S: CASKEY 7568 RR 603528
D: CASKEY 6441 RR 66165D

9- William Taylor, KY
TAYLOR STOCK 870 2/18/18 604285
S: CASKEY 5421 RR 600213
D: TAYLOR STOCK 0026 50459D

MARCH RAM LAMBS

1- Kjeldaard Farms, NE
KJELDGAARD 18-975 RR 3/12/18 604692
S: WILLWERTH RED 157 600420
D: KJELDGAARD 13-786 RR 42733D

2- Rikow Hamps, WI
RIKOW 8054 3/4/18 603958
S: RIKOW 6031 601201
D: KRACKOW RIKOW 4030 49512D

3- Jenna Sullivan, CT
SULLIVAN 1819 3/2/18 604298
S: SULLIVAN 1708 603246
D: SULLIVAN 1508 55656D

4- Ashton Daniels, MO
PLAZA HAMPS 1409 3/1/18 604498
S: BAABAA ACRES ANDERSON 219 RR 601507
D: PLAZA HAMPS 1216 RRNN 50087D

5- Brad Payne, MO
PLAZA HAMPS 1420 3/3/18 604501
S: HELD 17-1893 RRNNP 602279
D: PLAZA HAMPS 1150 RRNN 44310D

6- Alf Hampshires, WI
ALF 173-18 RRNN 3/12/18 604110
S: ALF 128-17 NNRR 602585
D: CASKEY 6653 RR 64498D

7- William Taylor, KY
TAYLOR STOCK 876 3/2/18 604286
S: CASKEY 5421 RR 600213
D: TAYLOR STOCK 2207 39105D

8- L&L Hampshires, NE
LARSON L & L 18-821 3/3/18 605177
S: STRAWBERRY FIELDS 1532 601991
D: LARSON L&L 14-96 RR NN 49410D

PAIR OF RAM LAMBS

1- Bobendrier Hampshires, MN
2- Kjeldgaard Farms, NE
3- Bobendrier Boys, MN
4- Rikow Hamps, WI
5- Ashton Daniels, MO
6- Brad Payne, MO
7- Jenna Sullivan, CT

JUNIOR CHAMPION RAM

Bobendrier Hampshires, MN
BOBENDRIER 18-05 NNP RR
'RARE REPUTATION' 1/2/18 604148
S: BOBENDRIER 15-60 NNRR 'RAREREBEL' 599125
D: BOBENDRIER 12-97 NNP RR 41431D

RESERVE JUNIOR CHAMPION RAM
Bobendrier Boys, MN

BOBENDRIERBOYS18-45RR 2/1/18 604799
S: CASKEY 6422 RR 'STEALTH' 601183
D: BOBENDRIER BOYS 15-55 RR 58383D



CHAMPION RAM

Bobendrier Hampshires, MN
BOBENDRIER 18-05 NNP RR
'RARE REPUTATION' 1/2/18 604148
S: BOBENDRIER15-60NNRR 'RAREREBEL' 599125
D: BOBENDRIER 12-97 NNP RR 41431D



RESERVE CHAMPION RAM

Edward Niemeier, IL
NIEMEIER 723 3/21/17 603966
S: DOA 14000 RRNN 600372
D: NELSON 15-15 QR 59107D

YEARLING EWES - EARLY

- 1- Nelson Hampshires, CO
NELSON 17-22 RR NNP 1/6/17 71157D
S: BOBENDRIER 13-60 NNP RR 595711
D: NELSON 12089 RR 39708D
- 2- Averi Smith, IA
TIFFT 367 2/2/17 68155D
S: QUAM 4-129 RRNN AI 599567
D: CASKEY 5444 RR 57397D
- 3- Mikara Anderson, PA
PETERSON 9314 RR 2/2/17 69326D
S: RIKOW 4075 599562
D: PETERSON 5582-1526 RR 35643D
- 4- Tinleigh Spoonster, MO
SPOONSTER 17-19 ET 2/1/17 67995D
S: WHEATON5-05NNRR 'POWERBILT' 579825
D: STEFFENS 389 NNP QR 36285D
- 5- Bobendrier Boys, MN
BOBENDRIERBOYS17-05RR 1/2/17 68114D
S: BOBENDRIER BOYS 15-16 RR 600107
D: SCHULTZ'S 74 28263D
- 6- Nelson Hampshires, CO
NELSON 17-44 RR NNP 1/10/17 71159D
S: BOBENDRIER 14-20 NNP QR 597543
D: ROOF 1685 40905D

7- Luke Benjamin, IL
BENJAMIN 1715 1/14/17 70617D
S: BENJAMIN 1521 600168
D: RIVIERA 627 (585) RR 16820D

8- Mikara Anderson, PA
PETERSON 9236 RR 1/23/17 69327D
S: RIKOW 4075 599562
D: PETERSON 5881 60350D

9- Dylan Klug, IA
KLUG HH 17-206T NNRR 2/5/17 67522D
S: BOBENDRIERBOYS15-50 'DERBY' 600453
D: KLUG HH 15-172 T NNP 54093D

10- Dylan Klug, IA
KLUG HH 16-198T RR NNP
'BENZ' 9/14/16 65559D
S: BOBENDRIERBOYS15-50 'DERBY' 600453
D: MERCEDES LADIES 13-03 43376D

11- Bill Chapin, IL
CHAPIN 634 NNP RR 1/27/17 67430D
S: BOBENDRIER 15-162 NNP QR 600809
D: CHAPIN582RRNN 'LADYPERFECTION' 42308D

12- Jenna Sullivan, CT
STRAWBERRYFIELDS1701 10/20/16 71104D
S: STRAWBERRY FIELDS 1532 601991
D: STRAWBERRY FIELDS 1400 51144D

13- Bobendrier Boys, MN
BOBENDRIERBOYS17-11QR 1/6/17 68117D
S: CASKEY 6422 RR 'STEALTH' 601183
D: BOBENDRIER BOYS 14-07 QR 49051D

14- Beau Mumm, IL
HELD 17-1886 RR-NNP 1/5/17 67149D
S: HELD 16-1753 NNP RR 600769
D: HELD 14-1574 49886D

15- Ethan Kennedy, NY
ROYAL 6101 12/29/16 76773D
S: RABBITCREEK 1504 'FULLTHROTTLE' 599537
D: BOBENDRIER BOYS 14-32 51517D

YEARLING EWES - LATE

- 1- Kjeldgaard Farms, NE
WILLWERTH GRAY 14RR
'ANGIE'S PRIDE' 2/20/17 74425D
S: WILLWERTH RED 157 600420
D: WILLWERTH GR 47 39348D
- 2- Kjeldgaard Farms, NE
KJELDGAARD 17-941 RR
'LADY GAGA' 3/25/17 71277D
S: WILLWERTH RED 157 600420
D: KJELDGAARD 13-773 RR 42726D
- 3- Brandt Spilde, WI
RIKOW 7044 3/5/17 68656D
S: RIKOW 4027 HOME MADE' 597755
D: RIKOW 3030 ET 45184D
- 4- Ethan Kennedy, NY
ROYAL 705 3/2/17 68850D
S: RABBITCREEK1504 'FULLTHROTTLE' 599537
D: HERRIG 1081 RRNN 61403D
- 5- Kjeldgaard Farms, NE
KJELDGAARD17-921RR 2/24/17 69433D
S: KJELDGAARD14-830RR 598628
D: KJELDGAARD 10-676 RR 29204D
- 6- Ethan Kennedy, NY
ROYAL 708 3/6/17 68853D
S: RABBIT CREEK 1504 599537
D: BOBENDRIER 14-44 NNP 52448D
- 7- Luke Benjamin, IL
BENJAMIN 1738 3/5/17 70619D
S: BENJAMIN 1521 600168
D: BENJAMIN 1522 58530D

8- Jenna Sullivan, CT
STRAWBERRYFIELDS1714 3/2/17 71101D
S: LARSON L&L 15-511 RR NN 599827
D: STRAWBERRY FIELDS 1528 57627D

9- Jenna Sullivan, CT
SULLIVAN 1712 2/17/17 70069D
S: SULLIVAN 1602 601606
D: STRAWBERRY FIELDS 1319 42910D

10- Andrea Jones, CA
JONES 17-17 2/12/17 68464D
S: PETERSON 7068 RR 596673
D: JONES 12-03 38119D

11- Trey Spoonster, MO
RIKOW 7046 3/6/17 68659D
S: JANDEHAMPS 4-19 'HOME FIRE' 597795
D: KRACKOW RIKOW 2031 38454D

12- Brad Payne, MO
PLAZA HAMPS 1359 3/14/17 69272D
S: PLAZA HAMPS 1130 RRNN 594272
D: PLAZA HAMPS 1256 57202D

13- Brad Payne, MO
PLAZA HAMPS 1321 2/20/17 69276D
S: LAMBERT 15-06 600040
D: J AND E HAMPS 17 26008D

14- L&L Hampshires, NE
LARSON L & L 17-717 2/8/17 70713D
S: LARSON L&L 16-613 601633
D: LARSON L&L 14-83 QR NN 49406D

PAIR OF YEARLING EWES

- 1- Kjeldgaard Farms, NE
- 2- Brad Payne, MN
- 3- Ethan Kennedy, NY
- 4- Mikara Anderson, PA
- 5- Dylan Klug, IA

SENIOR EWE LAMBS

- 1- Avery Smith, IA
TIFFT 337 10/7/17 73109D
S: QUAM 4-129 RRNN AI 599567
D: CASKEY 5444 RR 57397D
- 2- Bobendrier Hampshires, MN
BOBENDRIER17-157NN RR 9/9/17 74049D
S: BOBENDRIER15-60NNRR 'RAREREBEL' 599125
D: BOBENDRIER 13-35 NN RR 42612D
- 3- Barret Marshall, SD
BM WM 7-99 RR 9/16/17 73531D
S: LARSON L&L 16-613 601633
D: BM WM 601 63246D
- 4- Tinleigh Spoonster, MO
HERRIG 1173 RRNN 9/6/17 73874D
S: HERRIG0867RRNN TURBO CHARGER 595171
D: HERRIG 0929 NN 42513D
- 5- Mathew Pinckney, NY
BOBENDRIER17-169NNPRR 9/23/17 74058D
S: BOBENDRIER 15-60 NNPRR 'RARE REBEL' 599125
D: BOBENDRIER 14-61 NNP RR 52451D
- 6- Fuller Sheep Farm, SD
BOBENDRIER17-160NNRR9/10/17 74051D
S: BH 13-20 NNP RR RARE FELLER 595707
D: BOBENDRIER 13-12 NNP RR 42588D
- 7- Bill Chapin, IL
CHAPIN 654 RR NN 10/17/17 73152D
S: CHAPIN 152 RR NNP 600975
D: BOBENDRIER 16-37 NNP RR 61620D
- 8- Kenzie Meyer, IL
MEYER 1801 11/5/17 76545D
S: MEYER 1420 598466
D: MEYER 1442 51541D

SENIOR CHAMPION EWE

Kjeldgaard Farms, NE
 WILLWERTH GRAY 14RR
 'ANGIE'S PRIDE' 2/20/17 74425D
 S: WILLWERTH RED 157 600420
 D: WILLWERTH GR 47 39348D

RESERVE SENIOR CHAMPION EWE

Avery Smith, IA
 TIFFT 337 10/7/17 73109D
 S: QUAM 4-129 RRNN AI 599567
 D: CASKEY 5444 RR 57397D

JANUARY EWE LAMBS

1- Phyllis Davison, NE
 GILLMORE-DAVISON 18-01 1/2/18 74322D
 S: WILLWERTH PURPLE 21 601685
 D: PETERSON 5535-1513 RR 32741D

2- Pine Lawn Farms, NM
 CASKEY 8402 RR 1/22/18 76827D
 S: CASKEY 6448 RR 601838
 D: CASKEY 4455 RR 49789D

3- Bobendrier Hampshires, MN
 BOBENDRIER 18-16NNPRR 1/3/18 74066D
 S: CASKEY 6422 RR 'STEALTH' 601183
 D: BOBENDRIER 15-161 NNP RR 61598D

4- L&L Hampshires, NE
 LARSON L & L 18-80 1/22/18 77111D
 S: STRAWBERRY FIELDS 1532 601991
 D: LARSON L&L 14-97 RR NN 49411D

5- Jenna Sullivan, CT
 STRAWBERRYFIELDS 1801 1/7/18 76989D
 S: STRAWBERRY FIELDS 1705 603599
 D: STRAWBERRY FIELDS 1414 51141D

6- Kenzie, Meyer, IL
 GOLDEN LANE FARMS
 B1805 RRNNP 1/23/18 74328D
 S: QUAM 11390 RRNNET 'BELIEVER' 601383
 D: CASKEY 4664 RR 52947D

7- Beau Mumm, IL
 MUMM 1802 RR 1/12/18 73614D
 S: BOBENDRIER BOYS 15-16 RR 600107
 D: MUMM 733 14619D

8- Katie Hanson, OR
 CHAR-LAND FARMS 18-37 1/4/18 74587D
 S: HELD 15-1741 NNP- RR 600766
 D: CHAR-LAND FARMS 14-31 49598D

9- Jenna Sullivan, CT
 SCHIEFELBEIN 1802 RR 1/2/18 73165D
 S: LARSON L&L 16-605 601631
 D: SCHIEFELBEIN 1507 RR 62713D

10- Mathew Pinckney, NY
 QUAM 807 RRNN 1/2/18 73885D
 S: KASEY KZ-240 602816
 D: QUAM 11253 RRNN 44508D

11- Danielle Houghtaling, SD
 HOUGHTALING 18-794 RRNNP
 1/21/18 75011D
 S: PULLIN 1619 600907
 D: HOUGHTALING 15-603 RR 54678D

12- Mikara Anderson, PA
 JADEWOOD 18008 1/4/18 75895D
 S: JADEWOOD 13063 595784
 D: JADEWOOD 15028 54268D

13- Brandt Spilde, WI
 RIKOW 8030 1/7/18 73415D
 S: RIKOW 4027 'HOME MADE' 597755
 D: KRACKOW RIKOW 2062 38462D

14- Bobendrier Boys, MN
 BOBENDRIERBOYS18-06RR 1/2/18 75888D
 S: BOBENDRIER15-60NNPRR 'RAREBEL' 599125
 D: BOBENDRIER BOYS 12-05 QR 38563D

FEBRUARY EWE LAMBS

1- Phyllis Davison, NE
 GILLMORE-DAVISON 18-13 2/21/18 74442D
 S: WILLWERTH PURPLE 21 601685
 D: WILLWERTH PURPLE 26 74428D

2- Tom Gillmore, NE
 GILLMORE-DAVISON 18-07 2/2/18 74444D
 S: WILLWERTH PURPLE 21 601685
 D: BOBENDRIER 14-51 NNP QR 51467D

3- Rodney Anderson, WI
 BAA BAA ACRES ANDERSON 268
 2/2/18 76478D
 S: HELD 17-1893 RR-NNP 602279
 D: S & C 64 44438D

4- Luke Benjamin, IL
 BENJAMIN 1814 2/18/18 76495D
 S: BENJAMIN 1521 600168
 D: BENJAMIN 1550 58536D

5- Danny Hayter, MO
 RAY KAY FARMS 397-1851 2/12/18 74314D
 S: BOBENDRIER 17-08 NNP RR 602951
 D: RAY KAY FARMS 343-1503 54638D

6- Pine Lawn Farm, MN
 CASKEY 8490 RR 2/9/18 76831D
 S: CASKEY 6448 RR 601838
 D: KNOX 12-23 40744D

7- Brad Payne, MO
 PLAZA HAMPS 1392 2/6/18 75034D
 S: BAA BAA ACRES ANDERSON 219 RR 601507
 D: PLAZA HAMPS 1134 38089D

8- Peterson Sheep CO, SD
 PETERSON 9488 RR 2/20/18 74951D
 S: PETERSON 9018-16009 RR 601357
 D: PETERSON 7125 RR 60331D

9- L&L Hampshires, NE
 LARSON L & L 18-819 2/11/18 77119D
 S: STRAWBERRY FIELDS 1532 601991
 D: LARSON L&L 513 RR NN 57752D

10- Jenna Sullivan, CT
 SULLIVAN 1807 2/1/18 74392D
 S: SULLIVAN 1701 603244
 D: QUAM 11362 RRNN ET 63302D

11- Dylan Klug, IA
 KLUG HH 18-148TNNPQR 2/2/18 74134D
 S: KLUG HH 17-147P NNP RR 602403
 D: KLUG HH 16-194T QR 61331D

12- Bobendrier Hampshires, MN
 BOBENDRIER 18-53NNPRR 2/5/18 74082D
 S: CASKEY 6422 RR 'STEALTH' 601183
 D: BOBENDRIER 16-51 NNP RR 61625D

13- Danielle Houghtaling, SD
 HOUGHTALING 18-821 2/10/18 75016D
 S: HOUGHTALING 17-777 RR NNP 602821
 D: HOUGHTALING 13-446 44903D

14- Bobendrier Hampshires, MN
 BOBENDRIER 18-47NNPRR 2/1/18 74080D
 S: CASKEY 6422 RR 'STEALTH' 601183
 D: BOBENDRIER 14-67 NNP RR 48725D

15- Alf Hampshires, WI
 ALF 147-18 2/1/18 73612D
 S: RIKOW 6064 602211
 D: HERRIG 1023 RRNN 54496D

16- Izzy Wade, IN
 SCF 801 AI 2/15/18 75745D
 S: FELLER 919 588857
 D: FELLER 124 31355D

17- Tinleigh Spoonster, MO
 PLAZA HAMPS 1398 2/9/18 75036D
 S: BAA BAA ACRES ANDERSON 219 RR 601507
 D: PLAZA HAMPS 1131 RRNN 37738D

18- McTaggart's Hampshires, IN
 MCTAGGARTS 1806 RRNN 2/8/18 77459D
 S: GATSON 14-60 597367
 D: FINDER 1536 62878D

19- Bill Chapin, IL
 CHAPIN 661 RR NN 2/17/18 73160D
 S: CHAPIN 152 RR NNP 600975
 D: BOBENDRIER 13-08 NNP RR 42596D

20- Bill Chapin, IL
 CHAPIN 657 RR NN 2/7/18 73156D
 S: BOBENDRIER 16-161 NNP RR 602637
 D: SDF 11-004 NNP RR 32395D

MARCH EWE LAMBS

1- Brad Payne, MO
 PLAZA HAMPS 1412 3/2/18 75043D
 S: HELD 17-1893 RR-NNP 602279
 D: PLAZA HAMPS 1223 RRNN 50091D

2- L&L Hampshires, NE
 LARSON L & L 18-822 3/3/18 77120D
 S: STRAWBERRY FIELDS 1532 601991
 D: LARSON L&L 14-96 RR NN 49410D

3- Jenna Sullivan, CT
 STRAWBERRYFIELDS 1813 3/2/18 76999D
 S: STRAWBERRY FIELDS 1522 599783
 D: STRAWBERRY FIELDS 1316 42909D

4- Kjeldgaard Farms, NE
 KJELDGAARD 18-970 RR 3/11/18 74348D
 S: WILLWERTH RED 157 600420
 D: KJELDGAARD 16-865 RR 65497D

5- Kjeldgaard Farms, NE
 KJELDGAARD 18-969 RR 3/8/18 74347D
 S: WILLWERTH RED 157 600420
 D: KJELDGAARD 16-858 RR 'ADEL' 64054D

6- Ethan Kennedy, NY
 ROYAL 806 3/5/18 74986D
 S: RABBITCREEK 1504 'FULLTHROTTLE' 599537
 D: BOBENDRIER 14-44 NNP 52448D

7- Beau Mumm, IL
 MUMM 1830 RR 3/3/18 73622D
 S: MUMM 1684 RR AI 602528
 D: MUMM 1310 RR 42832D

8- Pine Lawn Farm, MN
 CASKEY 8716 RR 3/7/18 76835D
 S: CASKEY 7568 RR 603528
 D: CASKEY 6474 RR 66164D

9- Brad Payne, MO
 PLAZA HAMPS 1434 3/13/18 75046D
 S: HELD 17-1893 RR-NNP 602279
 D: PLAZA HAMPS 1256 57202D

10- Hailey Gehlback, IL
 GEHLBACH 18-12 3/15/18 76786D
 S: CHAR-LAND FARMS 15-01 598931
 D: CROME 1604 64578D

11- Tinleigh Spoonster, MO
 SPOONSTER 18-35 5/5/18 76066D
 S: BAA BAA ACRES ANDERSON 236 602360
 D: SPOONSTER 15-04 RR ET 58768D

13- Bill Chapin, IL
 CHAPIN 665 NN 3/23/18 73164D
 S: BOBENDRIER 16-161 NNP RR 602637
 D: CHAPIN 593 QR 49776D

PAIR OF EWE LAMBS

1- Bobendrier Hampshires, MN
 2- Tom Gillmore, NE
 3- Pine Lawn Farms, MN
 4- Kjeldgaard Farms, NE
 5- Bill Chapin, IL

JUNIOR CHAMPION EWE

Phyllis Davison, NE

GILLMORE-DAVISON18-13 2/21/18 74442D
S: WILLWERTH PURPLE 21 601685
D: WILLWERTH PURPLE 26 74428D

RESERVE JUNIOR CHAMPION EWE

Brad Payne, MO

PLAZA HAMPS 1412 3/2/18 75043D
S: HELD 17-1893 RR-NNP 602279



CHAMPION EWE

Kjeldgaard Farms, NE

WILLWERTH GRAY 14RR
'ANGIE'S PRIDE' 2/20/17 74425D
S: WILLWERTH RED 157 600420
D: WILLWERTH GR 47 39348D



RESERVE CHAMPION EWE

Phyllis Davison, NE

GILLMORE-DAVISON18-13 2/21/18 74442D
S: WILLWERTH PURPLE 21 601685
D: WILLWERTH PURPLE 26 74428D

PREMIER EXHIBITOR

Jenna Sullivan, CT

-SLICK-SHORN DIVISION-

YEARLING RAMS

1- Clark, Corbin, & Campbell Coyle, KY

POE A7151-17 1/16/17 602664
S: WHEATON4-112ETRRNN 'THEFULLMONTY' 598740
D: KPOE 9006 23343D

2- Brad Payne, MO

KORB 1727 Hwy 50 1/18/17 604748
S: MILLER O-196 595485
D: KORB 1622 75746D

FALL RAM LAMBS

1- Lazy 5 Ranch, NC

Lazy 5 3112 9/3/17 604754
S: LAZY 5 2915 ET 600096
D: LAZY 5 2757 52467D

JANUARY RAM LAMBS

1- Callie Taylor, PA

Scarlet Acres 1816 1/10/18 604088
S: ELLERBROCK 3983 ET 601518
D: SCARLET ACRES 1532 58341D

2- Tim & Sarah Fleener, PA

Fleener 1830 1/12/18 604126
S: ALLENSHOWLAMBS22110G299ET 601449
D: FLEENER 1607 61261D

3- Morgan & Maddie Hauger, IN

Poe 8037-18 1/9/18 604805
S: POE 7214-17 AI 602669
D: POE 4617-14 ET 68309D

4- Lazy 5 Ranch, NC

LAZY 5 3114 ET 1/5/18 604756
S: SLACK 7103 602834
D: LAZY 5 2920 59097D

5- Hannah Nave, TN

Friesen 1826 1/25/18 604388
S: SLACK H 5228 601055
D: MILLER P-3960 17893D

FEBRUARY RAM LAMBS

1- Lazy 5 Ranch, NC

LAZY 5 3180 ET 2/1/18 604761
S: SLACK 7103 602834
D: LAZY 5 2920 59097D

2- Land Run Hamps, OK

Land Run 516 RRNN 2/16/18 604273
S: SLACK 6329 601245
D: LAND RUN 291 RRNN 43279D

3- Lazy 5 Ranch, NC

LAZY 5 3181 ET 2/17/18 604762
S: SLACK 7103 602834
D: LAZY 5 2920 59097D

MARCH RAM LAMBS

1- Alivia Porter, IL

Storms 743 'Truck Yeah' 3/20/18 604530
S: STORMS 661 AI 603483
D: STORMS 519 49562D

2- Brodie Payne, MO

Plaza Hamps 1445 3/19/18 605306
S: ELLERBROCK 1920 600412
D: PLAZA 1310 RRNN 63265D

3- Lazy 5 Ranch, NC

LAZY 5 3182 AI 3/1/18 604763
S: SLACK 7103 602834
D: LAZY 5 2823 52469D

4- Lazy 5 Ranch, NC

LAZY 5 3121 ET 3/2/18 604760
S: SLACK 7103 602834
D: LAZY 5 2757 52467D

5- NOC Sheep Center, OK

NOC CM 3076-8051 3/10/18 605233
S: NOCGM-31366-6088 'GAMEOVER' 601908
D: NORTHERNOKLAHOMAWF-74-3076 45844D

6- Morgan & Maddie Hauger, IN

Hauger 0434 3/6/18 604537
S: HAUGER 0245 601627
D: POE 6298-16 AI 62964D

7- David VanCleave, IL

VanCleave G-1899 3/5/18 605287
S: VAN CLEAVE 1488 AI ET RRNN 598654
D: VAN CLEAVE 1320 52419D

PAIR OF RAM LAMBS

1- Morgan & Maddie Hauger, IN

2- Lazy 5 Ranch, NC



CHAMPION RAM

Alivia Porter, IL

Storms 743 'Truck Yeah' 3/20/18 604530
S: STORMS 661 AI 603483
D: STORMS 519 49562D



RESERVE CHAMPION RAM

Brodie Payne, MO

Plaza Hamps 1445 3/19/18 605306
S: ELLERBROCK 1920 600412
D: PLAZA 1310 RRNN 63265D

YEARLING EWES - EARLY

1- Rachel Flanders, IN

FLANDERS VIP 7496 1/13/17 69127D
S: FLANDERS VIP 5220 RRNN 600871
D: FLANDERS VIP 6221 61801D

2- Kyle & Jen Fleener, PA

FCL 1719 2/2/17 70555D
S: ALLENSHOWLAMBSIA2210G299ET 601449
D: FCL 1315 46303D

3- Clark, Corbin, & Campbell Coyle, KY

POE A7220-17 1/20/17 68326D
S: RULE RSC F3994 ET 'REIGN ON' 599775
D: POE 7360-07 16612D

4- Ty Thorson, WI

METRO 1714 1/24/17 67235D
S: ELLERBROCK 3489 ET 601870
D: METRO 417 49198D

5- Emily Nave, TN

FRIESEN 1715 1/3/17 71660D
S: FRIESEN 1656 ET 601413
D: SLACK 3387 63661D

6- Land Run Hamps, OK

LAND RUN 470 1/30/17 67925D
S: SLACK 5288 599349
D: LAND RUN 405 QRNN 57421D

7- Clark, Corbin, & Campbell Coyle, KY

POE 7076-17 12/8/16 68324D
S: POE 7050-07 588708
D: POE 2128-12 56211D

8- Clark, Corbin, & Campbell Coyle, KY
POE 7028 1/7/17 68321D
S:RULE RSC F3994 ET 'REIGN ON' 599775
D:POE 1038-11 50756D

YEARLING EWES - LATE

1- Lazy 5 Ranch, NC
LAZY 5 3104 5/1/17 71240D
S:LAZY 5 2910 ET 600101
D:LAZY 5 2920 59097D

2- Rachel Flanders, IN
JADEWOOD 2271 2/20/17 72001D
S:NSLS 15279 ET 602602
D:FLANDERS VIP 4977 49291D

3- Lazy 5 Ranch, NC
LAZY 5 2983 2/24/17 69648D
S:LAZY 5 2914 ET 600095
D:STITZLEIN FARMS 1254S 33840D

4- Hannah Schultz, WI
METRO 1732 2/13/17 67255D
S:RUPNOW 1115 600795
D:METRO 112 35731D

5- NOC Sheep Center, OK
NOC CM 4146-7146 4/4/17 70768D
S:NOC GM-3136-6088 'GAME OVER' 601908
D:NORTHERNOKLAHOMASS-6070-4146 51748D

6- Brodie Payne, MO
PLAZA HAMPS 1336 3/2/17 69285D
S:ELLERBROCK 1920 600412
D:VAN CLEAVE 12-36 38866D

7- Land Run Hamps, OK
LAND RUN 502 3/20/17 67938D
S:SLACK 5288 599349
D:GEIMAN 518 20583D

8- Jacen Wilinski, WI
DDJ 950 3/24/17 68457D
S:DDJ 886 598976
D:DDJ 782 48153D

9- NOC Sheep Center, OK
NOC BR-4092-7174 4/11/17 70778D
S:NOC RM-3076-6125 'BELLRINGER' 601910
D:NOC PC2-1032-4092 51756D

10- Lazy 5 Ranch, NC
LAZY 5 2978 2/23/17 69664D
S:LAZY 5 2909 ET 600100
D:STITZLEIN FARMS R112 46657D

PAIR OF YEARLING EWES

1- Rachel Flanders, IN
2- Lazy 5 Ranch, NC
3- Land Run Hamps, OK

SENIOR EWE LAMBS

1- Lazy 5 Ranch, NC
LAZY 5 3126 9/4/17 75765D
S:LAZY 5 2915 ET 600096
D:LAZY 5 2757 52467D

2- Rachel Flanders, IN
FLANDERS VIP 7738 10/5/17 74858D
S:DEE BROTHERS LLC 3212 596228
D:WHEATON 9-036E 29517D

3- Clark Coyle, KY
POE 8029-18 12/9/17 74471D
S:POE 9118-09 588705
D:POE 3046-13 51785D

SENIOR CHAMPION EWE

Lazy 5 Ranch, NC
LAZY 5 3104 5/1/17 71240D
S:LAZY 5 2910 ET 600101
D:LAZY 5 2920 59097D

RESERVE SENIOR CHAMPION EWE

Rachel Flanders, IN
FLANDERS VIP 7496 1/13/17 69127D
S:FLANDERS VIP 5220 RRNN 600871
D:FLANDERS VIP 6221 61801D

JANUARY EWE LAMBS

1- Ty Thorson, WI
METRO 1824 1/3/18 73732D
S:IMPACT 14091 598704
D:METRO 1527 54490D

2- Alivia Porter, IL
STORMS 698 1/31/18 73934D
S:TOLLE 19026 585051
D:STORMS 546 AI 56047D

3- Loyal Burns, OR
TEWALT 18112 1/3/18 74784D
S:TWEALT-WILSON 3100 596147
D:TEWALT-WILSON 3111 43786D

4- Lazy 5 Ranch, NC
LAZY 5 3135 ET 1/1/18 75770D
S:SLACK 7103 602834
D:LAZY 5 2757 54467D

5- Rachel Flanders, IN
FLANDERS VIP 8756 1/5/18 74863D
S:FLANDERS VIP 5220 RRNN 600871
D:FLANDERS VIP 6146 ET RRNN 61800D

6- Morgan & Maddie Hauger, IN
POE 8094-18 1/16/18 74475D
S:POE 1283-11 'A-COPY' 599350
D:POE 4483-14 51792D

7- Miranda Hunter, PA
POE A8036-18 AI 1/12/18 74278D
S:POE 1283-11 'A-COPY' 599350
D:POE 2351-12 44321D

8- Lazy 5 Ranch, NC
LAZY 5 3139 AI 1/2/18 75755D
S:SLACK 7103 602834
D:LAZY 5 2162 50982D

9- Ty Thorson, WI
METRO 1836 1/24/18 73738D
S:IMPACT 14091 598704
D:METRO 1514 54484D

10- Ty Thorson, WI
METRO 1815 1/1/18 73731D
S:MILLER O-836 ET 603316
D:METRO 407 49196D

11- Madeline, Samuel, & Josie Baynes, IN
MATTINGLY 1886 1/7/18 73305D
S:POE 9516-10 592204
D:MATTINGLY 1763 62585D

12- Brodie Payne, MO
PLAZA HAMPS 1380 1/6/18 77795D
S:ELLERBROCK 1920 600412
D:PLAZA 1306 RRNN 63264D

13- Land Run Hamps, OK
LAND RUN 1803 1/31/18 74331D
S:SLACK 6329 601245
D:LAND RUN 1501 RRNN 55614D

14- Campbell Coyle, KY
POE 8014-18 1/8/18 74470D
S:POE 9118-09 588705
D:POE 2064-12 44320D

15- Morgan & Maddie Hauger, IN
HAUGER 0531 1/5/18 75101D
S:HAUGER 0245 601627
D:POE 2415-13 50719D

16- Tim & Sarah Fleener, PA
FLEENER 1838 1/14/18 74012D
S:DEE BROTHERS LLC 3245 598817
D:FLEENER 1529 55800D

17- Corbin Coyle, KY
POE 8108-18 1/27/18 74938D
S:WHEATON 4-112 ET RRNN 598740
D:POE 3176-13 44331D

18- Rachel Flanders, IN
FLANDERS VIP 8760 1/20/18 74866D
S:RULE RSC 5069 'OCD' ET 602789
D:FLANDERS VIP 4102 49114D

19- Madeline Baynes, IN
MATTINGLY 1881 1/8/18 73306D
S:POE 9516-10 592204
D:MATTINGLY 1646 49097D

FEBRUARY EWE LAMBS

1- Izzy Wade, IN
SCF 804 AI 2/16/2018 77792D
S:IMPACT 13067 ET 597191
D:FELLER 427 49309D

2- Ty Thorson, WI
METRO 1849 2/17/18 73720D
S:MILLER O-836 ET 603316
D:METRO 1604 61548D

3- Rachel Flanders, IN
FLANDERS VIP 8789 2/17/18 74868D
S:RULE RSC 5069 'OCD' ET 602789
D:FLANDERS VIP 5061 AI 54420D

4- Madeline, Samuel, & Josie Baynes, IN
MATTINGLY 1885 2/7/18 77337D
S:POE 9516-10 592204
D:MATTINGLY 1676 49099D

5- Madeline, Samuel, & Josie Baynes, IN
MATTINGLY 1889 2/12/18 77330D
S:POE 9516-10 592204
D:MATTINGLY 1643 49096D

6- Morgan & Maddie Hauger, IN
HAUGER 0402 2/10/18 75099D
S:HAUGER 0245 601627
D:POE 5063-15 AI 56204D

7- Land Run Hamps, OK
LAND RUN 521 2/24/18 74334D
S:SLACK 6329 601245
D:KLEINERT 4833 56297D

8- Tim & Sarah Fleener, PA
FLEENER 1850 2/2/18 75902D
S:FLEENER 1703 602930
D:MILLER P-4624 41744D

9- Miranda Hunter, PA
POE A8138-18 AI 2/24/18 74280D
S:POE 7214-17 AI 602669
D:POE 1031-11 50724D

10- Lazy 5 Ranch, NC
LAZY 5 3166 ET 2/20/18 75795D
S:SLACK 7103 602834
D:LAZY 5 2757 52467D

11- Clark Coyle, KY
POE 8171-18 2/16/18 74472D
S:WHEATON 4-112 ET RRNN 598740
D:POE 1489-11 44395D

12- Rachel Flanders, IN
FLANDERS VIP 8875 2/3/18 74884D
S:ALEXANDER 1744 ET 603411
D:SHORYER 350 PINK 63778D

13- Alivia Porter, IL
STORMS 701 2/5/18 73941D
S:STORMS 608 AI 600755
D:NOC GM-2163-4086 51757D

14- Lazy 5 Ranch, NC
LAZY 3169 ET 2/27/18 75798D
S:SLACK 7103 602834
D:LAZY 5 2920 59097D

15- Lazy 5 Ranch, NC
 LAZY 5 3163 2/15/18 75759D
 S:LAZY 5 2910 ET 600101
 D:LAZY 5 2167 50985D

16- NOC Sheep Center, OK
 NOC BR-5094-8010 2/4/18 76957D
 S:NOC RM-3076-6125 'BELL RINGER' 601910
 D:NOC GM-1086-5094 58901D

17- Brodie Payne, MO
 PLAZA HAMPS 1386 2/3/18 75039D
 S:ELLERBROCK 1920 600412
 D:PLAZA 1311 RRNN 63266D

18- Sidney McAllister, OH
 SHROYER 2140 2/15/18 75975D
 S:SHROYER 148 'SSS RINGO' 596543
 D:SHROYER 789-10 32991D

19- Miranda Hunter, PA
 POE A8076-18 AI 2/10/18 74279D
 S:POE 9118-09 588705
 D:POE 4504-14 50707D

MARCH EWE LAMBS

1- Kyle & Jen Fleener, PA
 FCL 1832 3/1/18 73334D
 S:ALLENSHOWLAMBSIA2210G299ET 601449
 D:FCL 1601 62421D

2- Ty Thorson, WI
 RUPNOW 1325 3/3/18 73724D
 S:MILLER O-836 ET 603316
 D:RUPNOW 1111 61547D

3- Rachel Flanders, IN
 FLANDERS VIP 8790 3/1/18 74869D
 S:ALEXANDER 1744 ET 603411
 D:FLANDERS VIP 5024 AI 54405D

4- Kyle & Jen Fleener, PA
 DEE BROTHERS LLC 8133 3/4/18 75951D
 S:DEE BROTHERS LLC DB 9210 588803
 D:DEE BROTHERS LLC 4261 53835D

5- Cody Lanier, TX
 W8017 3/1/18 77349D
 S:LANIER B-4140 598634
 D:LANIER Y6023 65122D

6- Lazy 5 Ranch, NC
 LAZY 5 3152 ET 3/1/18 75784D
 S:SLACK 7103 602834
 D:LAZY 5 2920 59097D

7- Tim & Sarah Fleener, PA
 FLEENER 1867 3/4/18 74020D
 S:FLEENER 1703 602390
 D:FLEENER 1645 61271D

8- NOC Sheep Center, OK
 NOC BR 3136-8023 3/1/18 76960D
 S:NOC RM-3076-6125 'BELL RINGER' 601910
 D:NOC MG-727-3136 45858D

9- Miranda Hunter, PA
 FLEENER 1801 3/2/18 74029D
 S:ALLENSHOWLAMBSIA2210G299ET 601449
 D:BLU-ACRE 1603 61255D

10- Land Run Hamps, OK
 LAND RUN 1808 3/4/18 74336D
 S:LAND RUN 486 602551
 D:LAND RUN 1615 RRNN 66009D

11- Madeline, Samuel, & Josie Baynes, IN
 MATTINGLY 1936 3/15/18 77331D
 S:POE 9516-10 592204
 D:MATTINGLY 1605 43525D

12- Tim & Sarah Fleener, PA
 POE 8432-18 3/16/18 77844D
 S:POE 7214-17 AI 602669
 D:POE 3004-13 AI 68307D

13- Lazy 5 Ranch, NC
 LAZY 5 3183 3/20/18 77824D
 S:LAZY 5 2910 ET 600101
 D:LAZY 5 2517 AI 50976D

14- Lazy 5 Ranch, NC
 LAZY 5 3156 AI 3/1/18 75757D
 S:SLACK 7103 602834
 D:LAZY 5 0949 40486D

15- Madeline, Samuel, & Josie Baynes, IN
 MATTINGLY 1918 3/11/18 77338D
 S:POE 9516-10 592204
 D:MATTINGLY 1848 71112D

16- Campbell, Corbin, & Clark Coyle, KY
 TERRADISE 8055 3/5/18 74624D
 S:POE A7151-17 AI 602664
 D:POE A7133-17 AI 68325D

17- Sidney McAllister, OH
 SHROYER 2148 3/15/18 75977D
 S:SHROYER 148 'SSS RINGO' 596543
 D:SHROYER 1361 YELLOW 52615D

PAIR OF EWE LAMBS

- 1- Ty Thorson, WI
- 2- Rachel Flanders, IN
- 3- Kyle & Jen Fleener, PA
- 4- Alivia Porter, IL
- 5- Morgan & Maddie Hauger, IN
- 6- Lazy 5 Ranch, NC

JUNIOR CHAMPION EWE

Kyle & Jen Fleener, PA
 FCL 1832 3/1/18 73334D
 S:ALLENSHOWLAMBSIA2210G299ET 601449
 D:FCL 1601 62421D

RESERVE JUNIOR CHAMPION EWE

Izzy Wade, IN
 SCF 804 AI 2/16/2018 77792D
 S:IMPACT 13067 ET 597191
 D:FELLER 427 49309D



CHAMPION EWE

Kyle & Jen Fleener, PA
 FCL 1832 3/1/18 73334D
 S:ALLENSHOWLAMBSIA2210G299ET 601449
 D:FCL 1601 62421D



RESERVE CHAMPION EWE

Izzy Wade, IN
 SCF 804 AI 2/16/2018 77792D
 S:IMPACT 13067 ET 597191
 D:FELLER 427 49309D

PREMIER EXHIBITOR

Lazy 5 Ranch, NC



**GRAND CHAMPION EWE
 CHAMPION SLICK-SHORN EWE**

Kyle & Jen Fleener, PA
 FCL 1832 3/1/18 73334D
 S:ALLENSHOWLAMBSIA2210G299ET 601449
 D:FCL 1601 62421D



**RESERVE GRAND
 CHAMPION EWE
 CHAMPION FITTED EWE**

Kjeldgaard Farms, NE
 WILLWERTH GRAY 14RR
 'ANGIE'S PRIDE' 2/20/17 74425D
 S: WILLWERTH RED 157 600420
 D: WILLWERTH GR 47 39348D



BEST HEADED EWE

Brad Payne, MO
 PLAZA HAMPS 1412 3/2/18 75043D
 S: HELD 17-1893 RR-NNP 602279
 D: PLAZA HAMPS 1223 RRNN 50091D



BEST HEADED RAM

Bobendrier Hampshires, MN
 BOBENDRIER 18-05 NNP RR
 'RARE REPUTATION' 1/2/18 604148
 S: BOBENDRIER 15-60NNRR 'RAREREBEL' 599125
 D: BOBENDRIER 12-97 NNP RR 41431D



FLOCK

1- Lazy 5 Ranch, NC



**GRAND CHAMPION RAM
 CHAMPION FITTED RAM**

Bobendrier Hampshires, MN
 BOBENDRIER 18-05 NNP RR
 'RARE REPUTATION' 1/2/18 604148
 S: BOBENDRIER 15-60NNRR 'RAREREBEL' 599125
 D: BOBENDRIER 12-97 NNP RR 41431D



MIXED PAIR - BRED AND OWNED

1- Bobendrier Hampshires, MN



**RESERVE GRAND
 CHAMPION RAM
 RESERVE CHAMPION FITTED
 RAM**

Edward Niemeier, IL
 NIEMEIER 723 3/21/17 603966
 S: DOA 14000 RRNN 600372
 D: NELSON 15-15 QR 59107D



YOUNG FLOCK

1- Bobendrier Hampshires, MN



National
Champion

HAMPSHIRE
EWE

FCL 1832 ZIGGY

SIRE: RØSTER (SHOWER CHICKEN)

DAM: FCL 1601 'HIPPIY' (ROCKET)



ROOSTER
SEMEN AVAILABLE

Congratulations

TO ALL OUR CUSTOMERS
THIS PAST SHOW SEASON



BIG *congrats* GOES TO
RACHEL OLVER ON HAVING
2ND OVERALL SLICK FUTURITY
EWE LAMB!
RAISED AND SOLD BY US.

KYLE, JEN, & HUDSON
FLEENER

BIGLERVILLE, PA
717-304-3116



  **FLEENER CLUB LAMBS**

AHSA Futurity Program

What is it?

- a point system for youth to participate in and receive monetary prizes
 - Over \$6,000 rewarded each year in four categories
- Ewe lambs entered into the futurity can be purchased or bred & owned
 - Purchased ewe lambs do not compete against bred & owned ewe lambs
- There is a fitted and slick shorn division within the purchased and bred & owned divisions
 - Lambs can only be entered in one division
- Lambs nominated for futurity may receive points at any show, including both open and junior divisions
 - Only the top 5 shows will be counted for points
- A point sheet must be filled out for every show and be turned in by Nov 1 of the current year
 - Point forms can be found on www.hampshires.org
- The program provides incentive to youth to show their lambs, as well as, recognition to producers for raising high quality lambs

How do I nominate a ewe lamb for futurity?

- \$25 entry fee per lamb OR \$200 one-time fee to nominate the whole lamb crop
- Must fill out nomination form
- Lambs can be nominated through online sales, private treaty, and any public auction managed by Heartland Group, Banner Sale Mgmt., or any other recognized sale management

Who can participate in the AHSA Futurity?

- Any junior who is under 21 years of age and has paid the current year's membership dues (\$15)
- The nominated lamb must be in the junior's name as of Sept 1 of the current year
- Only one junior can submit points forms for a specific sheep
- One junior can have multiple lambs in the futurity; however the junior will only receive premiums for two lambs

Here is how the points are scored:

	Placing in class																													
# in class	1	2	3	4	5	6	7	8	9	10	11	12	13	14	15	16	17	18	19	20	21	22	23	24	25	26	27	28	29	30
1 to 5	5	4	3	2	1																									
6 to 10	10	9	8	7	6	5	4	3	2	1																				
11 to 15	15	14	13	12	11	10	9	8	7	6	5	4	3	2	1															
16 to 20	20	19	18	17	16	15	14	13	12	11	10	9	8	7	6	5	4	3	2	1										
21 to 25	25	24	23	22	21	20	19	18	17	16	15	14	13	12	11	10	9	8	7	6	5	4	3	2	1					
26+	30	29	28	27	26	25	24	23	22	21	20	19	18	17	16	15	14	13	12	11	10	9	8	7	6	5	4	3	2	1

Questions?? Call Jeff Ebert at 785-456-8500 or email asregistry@gmail.com

Plan to join the Futurity Fun in 2019!

GOAL SETTING & BREAKING

DR. ALISON CRANE

Alison grew up in Warrior, AL. She received her B.S. in Animal Science in 2012 from Berry College in Rome, GA. Following graduation, Alison began her M.S. in ruminant nutrition at the NDSU Hettinger Research Extension Center in Hettinger, ND, which was completed in 2014, and received her Ph.D. in reproductive physiology in March 2017 under the directions of Drs. Christopher Schauer, Reid Redden, and Kendall Swanson. Alison's research program focused on most aspects of sheep production and extension including nutrition, reproductive physiology, as well as wool and carcass character. Dr. Crane is the new Extension Sheep & Meat Goat Specialist at Kansas State University and will have a regular column in the Hampshire Heartbeat with timely advice for Hampshire breeders and the sheep industry.



I have always been a very driven and goal-oriented person. I knew from a young age that I had three main passions: 1) I wanted to work with animals, 2) I wanted to help people, and 3) I wanted to travel and learn about the world. I learned the habits that made pursuing such goals possible. I attended graduate programs that allowed me to learn about and work with sheep and sheep producers on a daily basis. I pursued my Ph.D., made the goal of becoming a sheep extension specialist. I wrote grants to travel and have attended sheep conferences internationally and across the United States. Then, a year and a half ago, I became a sheep extension specialist. That was really the last box to tick of my long-term goals.

I began to ask myself the questions: What's next? And What do I want to do now?

When we begin to do this and have not determined the 'new' vision or long-term goal setting for our personal or professional lives or businesses, we lose direction, let other people's opinions hold too much stock in our decisions, and lose focus on what really matters to our overall goals. I write this to encourage you to continue learning and education yourself by attending seminars and clinics, but to also push yourself and your business to set goals, document your business model, and actually write down what you want your business to stand for. What is your vision? You might ask how do you begin to do this? I included some of the first steps to documenting these things below. I guarantee you that taking these few steps will lead to more questions, but they will also allow you to better understand your business' vision for the future and better guide your daily decisions.

1. Write your top five core values.
 - a. What defines your business?
 - b. What are your passions?
2. Write the core focus of your business.
 - a. From #1, what is the overall theme?
 - b. Your niche? Your purpose/passion/cause?
3. Write your 10-year target.
 - a. Don't be too conservative; ten years is a long time!
4. Write your target market(s).
5. Define your 3 year picture next.
 - a. What date is that?
 - b. What do you think your cost of production is? Or do you know it?
 - c. Revenue? Other measures (equity, net profit, etc.)?
6. What do you want all of those things to be on your farm in three years?
 - a. What are your goals to accomplish on-farm in three years?
7. Do the same for one year goals.
8. Do the same again for 90 days from now.
 - a. How long will these take approximately?
 - b. What issues might you have accomplishing these?

These points give you a solid start for goal setting both personally and professionally. I do this personally in a journal/planner; it's also how I prioritize my 'to-do list'. The main thing to remember is that there are no goals too lofty and that no one is responsible for your goals other than you. You are in control of your business, your goals, and most of all, your life.

"Don't let someone who gave up on their dreams talk you out of yours."

NELSON *Hampshires*

2018 fall ewe lambs all out of the Alf ram, also going to sales this summer.



Alf ram purchased at Sedalia 2017, \$3000



2018 fall ram lambs



Yearling ewes going to sales this summer

Rodney & Kathy Nelson

13329 WCR 74 Eaton, CO 80615

R: 970-481-9837 | K: 970-481-0861 | Nelsheep1@what-wire.com

Mumm Hampshires



Mumm 1830

2nd NAILE Jr Show

1st Late Ewe lamb IL and 2nd IN

2018 also included the purchase of the Quam Hampshire Flock.

Thanks to Rex and Jerry for allowing us to add your great set of females into our breeding program. Watch for lambs outs of these ewes this spring and summer!

Mumm 1802

2nd NAILE Jr Show

Champion Ewe IL Jr Show

1st Early Ewe lamb IL & IN



Held 17-1886

Sr Champion Fitted Ewe NAILE Jr Show

Champion Ewe IL State Fair

Res Champion Ewe 2017 AAJS

Jason, Megan, Beau, Luke & Emmalou

49 CR 1300 N—White Heath, IL—c:217-377-2073

www.mummhampshires.com—meganmumm@hotmail.com

American Hampshire Sheep Association Online Sale Entry Form Hosted by wlivestock.com

Sale Rules:

- These sales are an online event sponsored by the AHSA. The sales will be hosted by wlivestock.com and will be held on April 30th & June 11th.
- This sale is for both rams and ewes, yearlings and lambs.
- A \$10 per head entry fee for ewes and a \$50 per head entry fee for rams must be included when making your entries. Additionally, 10% of the final selling price will be charged on all animals receiving a bid.
- You must be a 2019 paid member of the American Hampshire Sheep Association to enter animals in these online sales.
- The sale is open to registered Hampshire yearling ewes and rams and registered Hampshire ram and ewe lambs.
- April 22nd is the deadline for the April sale and June 3rd is the deadline for the June sale.
- An application for registration with appropriate fees or registration certificate must be provided with your entries.
- High quality pictures that show at least a side view and rear view are recommended and these must be provided by entry deadline. Ideally these would be emailed to asregistry@gmail.com.

Consignor _____ Phone Number _____

Consignor's website _____ AHSA Futurity Nominated _____

Flock Tag Number _____

Sire _____ Dam _____

Date of Birth _____ DNA _____

Location of Sheep _____

Starting Price _____ Reserve price (if different than starting price)

Delivery
Options _____

Comments _____

Please send this form along with entry fee and registration application or certificate to the American Hampshire Sheep Association, PO Box 231, Wamego, KS 66547. For more information contact Jeff Ebert at 785-456-8500.

Peterson 926



Congratulations Mikara Anderson on a great show season!

- Supreme Champion Ewe (Meat breeds) Open Show 2019 PA Farm Show
 - Champion Hampshire Ewe - Jr Show 2018 KILE
 - Champion Hampshire Ewe - Open Show 2018 KILE
 - Champion Hampshire Ewe - Jr. Show 2018 Big E
 - 3rd place Hampshire yrl Ewe - 2018 NAILE Jr Show
 - 3rd place Hampshire yrl Ewe - 2018 NAILE Open Show

THANK YOU TO SAMUEL E. HAYES JR. FOR SELECTING THIS EWE FOR MIKARA AND CONTINUED SUPPORT OF OUR BREEDING PROGRAM.

Peterson Sheep Co - Lemmon, SD
701-376-3115 | Peterson@sdplains.com

PETERSON SHEEP CO.

BIG, BOLD HAMPSHIRE WITH CAPACITY....



2018 National Champion Ram - Now a stud ram at Sanfords



1st Place Fitted January Ewe Lamb at the 2018 National Sale sold to Ethan Kennedy, NY



Reserve Champion Ewe 2018 National Sale sold to Brittany Byram, MO



1st Place February Fitted Ewe Lamb 2018 National Sale sold to Gillmore-Davison, KS

What's New For 2019

We have six yearling rams available, top picks from 2018 lamb crop

Our first fall lambs in a few years, three exciting ram lambs out of our new sire Marshall/L&L

Our first time to flush - used maybe one of the greatest ewes we ever raised, Ms. Pride. Flushed to Krackow's 'Home Boy' This has given us some exciting prospects

Pictures available upon request

By-Products of Sheep

What is a by-product? Do sheep have by-products? Where do by-products come from? There are by-products that sheep produce that can be used in everyday life, and some of them we don't even know that they came from sheep. First, we should answer the question of what is a by-product. A by-product is something that can be made or produced from the original product. Sheep have by-products that come from all different parts of their body.

Some common by-products people often think of when they think of sheep include: meat, wool, hide, casings for sausage, animal feeds, like dog food, leather, and lanolin. While all of these products come from the sheep, they come from different parts of the sheep. For example, the casings come from the intestines, but the material for dog food comes from the fatty acids of the carcass. Other by-products that come from the intestines are strings that can be used for instruments like guitars and violins.

The fats and fatty acids from sheep provide a variety of by-products that can be included in a lot of everyday items. They are commonly used in wax products like candles and crayons. They can also be found in a product called glycol which is used in brake fluid, and glycerol is what makes the asphalt on roads stick together. The most shocking thing about fats and fatty acids is that they can be found in common makeup items, tanning lotion, and hand creams.



Other by-products that come from sheep include: shampoo, bone china, tape, shaving cream, baseballs, artistry brushes, and other sporting goods. Bone china comes from the bones of a sheep, while shampoos and conditioners can come from the keratin within the bones and hooves. Keratin is the protein that is in your hair and helps your hair grow. Adhesive tape and piano keys also are products of the hooves and bones of sheep.



Artist brushes and baseballs are made from wool. The inside of a baseball used to be stuffed with wool, while the thread used to sew the baseball together was also made of wool. Wool itself is also a product of sheep and can be used for many different items, like clothing and blankets.

Other sporting good items, like gloves, tennis balls, and basketballs can all be made from the hide. The hide is normally cheaper than beef hides, and used because they are less expensive. Since the sheep hide can be used for leather, it can be used to make the head of drums or some footwear.

As you can see there are a lot of by-products that sheep have to offer, yet people do not know even a few of them. There are so many useful by-products that are not being taken full advantage of, and by knowing more about the by-products you can help spread the knowledge too!



KING DIAMOND RANCH

2019 is going to be bright!

Thank you to all of our buyers and bidders - we appreciate the support of our program.



Watch for updates about our spring and summer sale entries - we have some exciting options!

Arnold, Dina, Courtney and Amanda King

Questions - Contact Dina Tesconi-King

dinamking@hotmail.com | 707.322.3469 | Visit our Facebook Page - King Diamond Ranch

FINDER

Hampshires,
Katahdins &
Maremma Livestock
Guardian Dogs

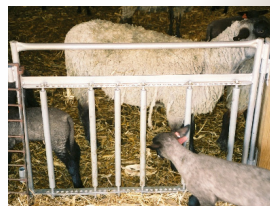


WARREN & PAM FINDER

Warren for sheep: (620) 532-1327 14715 W. Maple Grove Rd.
Pam for dogs: (620) 491-1087 Kingman, KS 67068
finderhampshires@gmail.com facebook.com/FinderHampshires



Wedekind Manufacturing
Worth Your Money Since 1965!



See our prices online
Qualitylivestockfence.com
402-447-2700
doug@qualitylivestockfence.com
Five-Year Warranty
(except custom orders)

North American International Livestock Exposition Junior Hampshire Show Results

Louisville, KY - November 10, 2018

Junior Show Judge: Bart Cardwell, OK

-SLICK-SHORN DIVISION-

SENIOR RAM LAMBS

- 1- Abby Clonts, MO
WRIGHT 0635-FB 12/26/17 605117
- 2- Allison Farmer, MD
FARMER 0041 12/8/17 604472
- 3- Kaylee, Ethan, Jacob, Aden, & Ethan Bazille, WI
U OF WI 17-124 10/7/17 604200

JANUARY RAM LAMBS

- 1- Morgan & Maddie Hauger, IN
POE 8037-18 1/9/18 604805
- 2- Rance Lewellen, OK
WRIGHT BL 114/200 1/6/18 605118
- 3- Hannah Nave, TN
FRIESEN 1826 1/25/18 604388
- 4- Callie Taylor, PA
SCARLET ACRES 1816 1/10/18 604088
- 5- Rachel Flanders, IN
FLANDERS VIP 8795 1/15/18 604438

FEBRUARY RAM LAMBS

- 1- Alivia Porter, IL
STORMS 743 'TRUCKYEAH' 3/20/18 604530
- 2- Rachel Olver, PA
WHEATON 8-134 2/21/18 605223
- 3- Brodie Payne, MO
PLAZA HAMPS 1445 3/19/18 605306
- 4- Morgan & Maddie Hauger, IN
HAUGER 0434 3/6/18 604537
- 5- Alison Kelly, IN
KELLY 18043 3/18/18 604702
- 6- Kelsey & Katelyn O'Hare, NY
FCL 1822 2/3/2018 603934
- 7- Emily Ann Lawrence, TN
W BELDEN 5-8 RRP 3/6/2018 604122



RESERVE CHAMPION RAM

- Rachel Olver, PA
WHEATON 8-134 2/21/18 605223

YEARLING EWES - EARLY

- 1- Katie Anderson, IN
CARSON 1705 1/3/17 75875D
- 2- Rachel Flanders, IN
FLANDERS VIP 7496 1/13/17 69127D
- 3- Campbell, Corbin, & Clark Coyle, KY
POE A7220-17 1/20/17 68326D
- 4- Hayden Taylor, WI
UWI 17047 1/14/17 67657D
- 5- Ty Thorson, WI
METRO 1714 1/24/17 67235D
- 6- Emily Nave, TN
FRIESEN 1715 1/3/17 71660D
- 7- Matthew Connolly, NC
WHEATON 7-023 12/10/16 71173D
- 8- Campbell, Corbin, & Clark Coyle, KY
POE A7028-17 1/7/17 68321D
- 9- Campbell, Corbin, & Clark Coyle, KY
POE A7076-17 12/8/16 68324D
- 10- Katlyn Parr, IL
PARR 1708 RR 1/24/17 67807D
- 11- Caroline Jenkins, GA
STAMEY 38304 1/22/17 70832D
- 12- Brandon, Derek, & Lakin Stahel, KS
STAHEL 1703 1/14/17 67856D

YEARLING EWES - LATE

- 1- Cynthia Connolly, NC
LAZY 5 3104 5/1/17 71240D
- 2- Adriana Wendland, MN
RULE 7444 4/1/17 69452D
- 3- Wyatt Nixon, WI
JFSS 7133 2/6/17 68426D
- 4- Katie Anderson, IN
CARSON 1711 3/19/17 72003D
- 5- Rachel Flanders, IN
JADEWOOD 2274 2/20/17 72001D
- 6- Erin Israel, FL
BEGALKA 7326 5/19/17 72139D
- 7- Wyatt Nixon, IN
JFSS 7131 2/1/17 68425D
- 8- Collin Tennant, IN
JFSS 7180 4/17/17 71352D

- 9- Alexis Hickman, IN
FLANDERS VIP 7520 2/5/17 75054D
- 10- Hannah Schultz, WI
METRO 1732 2/13/17 67255D
- 11- Jacen Wilinski, WI
DDJ 950 3/24/17 68457D
- 12- Brodie Payne, MO
PLAZA HAMPS 1336 3/2/17 69285D
- 13- Brandon, Derek, & Lakin Stahel
STAHEL 1712 2/5/17 67859D
- 13- Brandon, Derek, & Lakin Stahel
STAHEL 1711 2/5/17 67858D
- 14- Katlyn Parr, IL
PARR 1725 RR 2/4/17 67812D
- 15- Allison Farmer, MD
JADEWOOD 2261 2/8/17 71440D
- 16- Tyler Wright, IN
PAXTON 21 3/7/17 71672D
- 17- Kaylee, Jacob, Aden, & Ethan Bazille, WI
KIRSCHTEN 15071 4/2/17 68644D

SENIOR EWE LAMBS

- 1- Rachel Flanders, IN
FLANDERS VIP 7738 10/5/17 74858D
- 2- Jaden Younts, IN
PLANK 870 12/27/17 73262D
- 3- Riley McGhee, IN
EINHAUS 8050 AI 12/19/17 76684D
- 4- TJ Yazell, KY
PPF 857 12/23/17 77002D
- 5- Brandon, Derek, & Lakin Stahel, KS
SWEARINGENSS 1802AI 12/14/17 75087D
- 6- Landrey Krieger, IN
JFSS 8009 ET 9/20/17 74637D
- 7- Clark Coyle, KY
POE 8029-18 12/9/17 74471D
- 8- Mason Johnson, OH
RIVENOAK 1734 9/20/17 74713D
- 9- Alexander Lisovsky, MO
CABANISS 18-402Y 10/3/17 72838D

SENIOR CHAMPION EWE

- Cynthia Connolly, NC
LAZY 5 3104 5/1/17 71240D

RESERVE SENIOR CHAMPION EWE

- Katie Anderson, IN
CARSON 1705 1/3/17 75875D

EARLY JANUARY EWE LAMBS

- 1- Loyal Burns, OR
TEWALT 18112 1/3/18 74784D
- 2- Ty Thorson, WI
METRO 1824 1/3/18 73732D
- 3- Ty Thorson, WI
METRO 1815 1/1/18 73731D
- 4- Hannah Deno, IN
DENO FARMS 1806 1/5/18 74957D
- 5- Brett Coopshaw, OH
FLANDERS VIP 8753 UP 1/2/18 74861D



CHAMPION RAM

- Alivia Porter, IL
STORMS 743 'TRUCKYEAH' 3/20/18 604530

6- Jasmine & Bryce Rudicel, IN RUDICEL 8011 1/4/18 73381D	4- Garrett Friesen, IN FRIESEN 1824 1/22/18 74721D	2- Morgan & Maddie Hauger, IN HAUGER 0402 2/10/18 75099D
7- Brianna Ferrell, IN SLACK 8280 1/6/18 75220D	5- Kyla, Kade, & Kinsey Mennen, IN MENNENIN49-196909215 1/25/18 75866D	3- Madeline, Samuel, & Josie Baynes, IN MATTINGLY 1889 2/12/18 77330D
8- Maeci Marshall, IN SLACK 8146 1/5/18 77674D	6- Alli Jobe, PA PAINTER 0390 1/21/18 77569D	3- Clark Coyle, KY POE 8171-18 2/16/18 74472D
9- Alexis Hickman, IN FLANDERS VIP 8759 1/2/18 74864D	7- Adriana Wendland, MN NLSL 18011 1/29/18 75666D	4- Sidney McAllister, OH SHROYER 2140 2/15/18 75975D
10- Karrie Van Winkle, KS OTT A 8155 1/1/18 74759D	8- Alivia Porter, IL STORMS 698 1/31/18 73934D	5- Kennedy Algine, OH CARR 1820 2/16/18 75917D
11- Lilian Unger, IL RULE 1802 1/2/18 74749D	9- Rachel Flanders, IN FLANDERS VIP 8760 1/20/18 74866D	6- Brianna Ferrell, IN SLACK 8340 2/11/18 75221D
12- Brodie Payne, MO PLAZA HAMPS 1380 1/6/18 77795D	10- Kaitlyn Hicks, IN B1770 HICKS 1/25/18 77686D	7- Emma & Kennedy Mitchell, IN PAXTON 24 2/16/18 73266D
13- Morgan & Maddie Hauger, IN HAUGER 0531 1/5/18 75101D	11- Kyla, Kade, & Kinsey Mennen MENNENIN49-195709210 1/20/18 75862D	8- Skye Schumaker, IL SCHUMAKER 1405 2/10/18 77862D
14- Olivia Jones, IN BLACK MAPLE FARM 1804 1/4/18 75056D	12- Corbin Coyle, KY POE 8108-18 1/27/18 74938D	9- Lauren Fry, IN HIRED HAND 8149 2/16/18 77621D
15- Brandon, Derek, & Lakin Stahel, KS SWEARINGEN SS 1817 1/6/18 75089D	13- Kylie Cyr, IL KLEINERT 5162 TW 1/25/18 77722D	10- Bryanna Warner, NY PETERSON 1802 2/15/18 75932D
16- Emily Ann Lawrence, TN MOORE 1039 1/1/18 73375D	14- Alexis Bowman, IN MENNEN IN49-1975 1/27/18 77744D	11- Nicole Williamson, AL M & N 0493 2/14/18 77053D
INTERMEDIATE JANUARY EWE LAMBS	15- Emme Hanes, IN SMITH 1549 1/20/18 73634D	12- Sam Benton, KY HALLIGAN 809 2/16/18 73368D
1- Lane Slaton, IN BURCH 8050 AI TR 1/16/18 73707D	16- Bristol Brown, TN BB 0101 1/29/18 75139D	13- Hannah Deno, IN DENO FARMS 1818 2/9/18 74958D
2- Rachel Olver, PA FCL RC 1802 1/16/18 73340D	17- Skilar Burch, TN FRIESEN 1819 A1 1/20/18 74723D	14- Hannah Schultz, WI METRO 1845 2/13/18 73718D
3- Morgan Hauger, IN POE 8094-18 1/16/18 74475D	18- Abby Clonts, MO CROSS COUNTRY CLUB LAMBS 0006 1/21/18 74556D	LATE FEBRUARY EWE LAMBS
4- Lauren Swan, MT WESTLAKE 810 1/8/18 73163D	EARLY FEBRUARY EWE LAMBS	1- Ty Thorson, WI METRO 1849 2/17/18 73720D
5- Riley McGhee, IN SMITH 1512 1/7/18 73633D	1- Madeline, Samuel, & Josie Baynes, IN MATTINGLY 1885 2/7/18 77337D	2- Landrey Krieger, IN JFSS 8064 2/24/18 74568D
6- Linsey Eddy, OH WESTLAKE 0802 1/7/18 75160D	2- Jordyn Leininger, IN SLACK 8162 Z 2/8/18 75907D	3- Rachel Flanders, IN FLANDERS VIP 8789 2/17/18 74868D
7- Makenna Franklin, IN EINAHUS 8043 AI 1/18/18 76683D	3- Rachel Flanders, IN FLANDERS VIP 8875 2/3/18 74884D	4- Emily Stevens, OH WESTLAKE 0845 2/24/18 75164D
8- Harlee Dunaway, IN POE A8104-18 AI 1/17/18 74281D	4- Rachel Olver, PA FLEENER 1849 2/2/18 74017D	5- Garrett Kennedy, IN FRIESEN 1832 2/21/18 74725D
9- Mackenzie Cunningham, KS WARRIOR 1803 1/12/18 75579D	5- Korbin Heminger, IN POE 8253-18 AI 2/6/18 74296D	6- Abigail Wilson, NC STITZLEIN 464 2/28/18 76900D
10- Madeline, Samuel, & Josie Baynes, IN MATTINGLY 1886 1/7/18 73305D	6- Eli Mitchell, IN MATTINGLY 1920 2/8/18 77329D	7- Katie Anderson, IN CARSON 1825 2/18/18 75882D
11- Madeline Baynes, IN MATTINGLY 1881 1/8/18 73306D	7- Alivia Porter, IL STORMS 701 2/5/18 73941D	8- Kaitlyn Hicks, IN HICKS A8016 2/25/18 77684D
12- Campbell Coyle, KY POE 8014-18 1/8/18 74470D	8- Mackenzie Smith, AL SMITH 2951 2/1/18 76930D	9- Marnie Schwartzkopf, IN D CARSON 1814 TW 2/23/18 75876D
13- Olivia Scuderi, MD FCL 1803 AI 1/16/18 73319D	9- Megan Silverthorn, IN JENNINGS 8034 2/8/18 74610D	10- Kayleigh Verhaeghe, IN KCV 3067 2/18/18 75894D
14- Allison Farmer, MD ROHRER 1831 1/15/18 74799D	10- Blake & Kyle Schnackenberg, IN SLACK 8551 2/3/18 75092D	11- Levi Willmann, IN WF 0574 2/17/18 77619D
15- Kayleigh Verhaeghe, IN KCV 3071 1/11/18 75891D	11- Brandon, Derek, & Lakin Stahel, KS SWEARINGEN SS 1822 2/5/2018 75088D	12- Lauren Swan, MT WESTLAKE 812 2/22/18 77675D
16- Katlyn Parr, IL PARR 1817 RR 1/19/18 73603D	12- Isaac Thompson, IN SILVER DOLLAR 8008 2/4/18 75978D	13- Rhianna Cyr, IL CRAZYHCLUBLAMBS1850 2/20/18 77444D
17- Kaylee Rowings, IN SHUCK 1810 1/18/18 75742D	13- Celia Dodd, TN BFL 1810 2/2/18 73373D	14- Bristol Brown, TN BB 0103 2/20/18 75141D
18- Kaylee & Levi Rowings, IN KBP 1840 1/17/18 75988D	14- Katlyn Parr, IL PARR 1840 RR 2/5/18 73609D	15- Kevin, Lorrie, Sarah, & Joshua Riemer RIDGEVIEW 1827 2/21/18 75150D
LATE JANUARY EWE LAMBS	15- Brodie Payne, MO PLAZA HAMPS 1386 2/3/18 75039D	16- Aspen Jobe, PA JFSS 8063 2/24/18 74631D
1- Ty Thorson, WI METRO 1836 1/24/18 73738D	16- Kaylee & Levi Rowings, IN SHUCK 1809 2/5/18 75743D	17- Jesse Monnin, LA STORMS 721 2/24/18 73939D
2- Cynthia Connolly, NC STITZLEIN FARMS 2216 1/26/18 76899D	INTERMEDIATE FEBRUARY EWE LAMBS	EARLY MARCH EWE LAMBS
3- Morgan Sanchez, WY SPY 2110 1/28/18 77341D	1- Izzy Wade, IN SCF 804 2/16/18 77792D	1- Alexis Hickman, IN FLANDERS VIP 8825 3/13/18 74875D

2- Eli Mitchell, IN			
MATTINGLY 1910	3/10/18	77328D	
3- Rachel Olver, PA			
FCL 1833	3/6/18	73335D	
4- Isabelle Clouse, IN			
RULE 1883	3/1/18	75731D	
5- Edward Maddox, FL			
DC 1827 AI	3/5/18	77240D	
6- Maeci Marshall, IN			
SLACK 8273	3/6/18	77673D	
7- Ty Thorson, WI			
RUPNOW 1325	3/3/18	73724D	
8- Joey Hicks, IN			
HICKS 0823	3/14/18	77685D	
9- Katie Anderson, IN			
CARSON 1845	3/5/18	75878D	
10- Christopher Waddle, OH			
ELLERBROCK 5343 ET	3/6/18	75720D	
11- Lilian Unger, IL			
RULE 1878	3/1/18	76674D	
12- Linsey Eddy, OH			
WESTLAKE 0850	3/9/18	75162D	
13- Campbell, Corbin, & Clark Coyle, KY			
TERRADISE 8055	3/5/18	74624D	
14- Brooke Howard & Morgan Sanchez, WY			
SPY 2250	3/5/18	77348D	
15- Madeline, Samuel, & Josie Baynes, IN			
MATTINGLY 1918	3/11/18	77338D	
16- Addyson Trew, TN			
TREW 1338	3/2/18	75696D	
17- Sofia Vives, FL			
NELSSSEN 18096	3/10/18	75224D	
18- Harlee Dunaway, IN			
HAUGER 0485	3/2/18	75104D	
19- Logon McDowell, IN			
JFSS 8091	3/8/18	74691D	

LATE MARCH EWE LAMBS

1- Sidney McAllister, OH			
SHROYER 2148	3/15/18	75977D	
2- Colt McCoy, OH			
FARROW 8818	3/19/18	75443D	
3- Shawna Clay, FL			
HAWS 18-5094	3/16/18	75701D	
4- Matthew Connolly, NC			
C & M FARM 386	3/21/18	76898D	
5- Tyler Getzlaff, FL			
SACRED SILENCE 1817	3/25/18	77642D	
6- Wyatt Vogel, IA			
ALLENSHOWLAMBSIA2210-H299	3/16/18	77624D	
7- Caleb Smith, FL			
SACRED SILENCE 1836	3/25/18	77641D	
8- TJ Yazell, KY			
PPF 8189	4/1/18	77004D	
9- Courtney Begoon, VA			
SPONAUGLE 18-658B	3/25/18	76463D	
10- Alison Kelly, IN			
KELLY 18034	3/15/18	77557D	
11- Ivey Cook, GA			
M&M 0923	3/16/18	77055D	
12- Jared Cook, GA			
M&M 0929	3/16/18	77056D	
13- Sam Benton, KY			
HALLIGAN 812	3/15/18	73371D	
14- Kyla, Kade, & Kinsey Mennen, IN			
MENNE IN49-1992	4/2/18	75873D	
15- Lydia Wilson, NC			
C & M 385	3/21/18	76897D	

16- Abigail Wilson, NC			
C & M 381	3/16/18	76895D	
17- Cynthia Connolly, NC			
C & M 391	3/16/18	76896D	
18- Abby Clonts, MO			
WRIGHT 707	4/5/18	75671D	
19- Cameron McCoy, OH			
HAYS HB 18-39	4/3/18	75565D	
20- Madeline, Samuel, & Josie Baynes, IN			
MATTINGLY 1936	3/15/18	77331D	
21- Caroline Jenkins, GA			
M & M 0511	3/16/18	77054D	
22- Keilen Burkhalter, OK			
WRIGHT 0704	4/6/18	75684D	
23- Cooper Burkhalter, OK			
WRIGHT 0710	4/12/18	75571D	

JUNIOR CHAMPION EWE

Alexis Hickman, IN
FLANDERS VIP 8825 3/13/18 74875D

RESERVE JUNIOR CHAMPION EWE

Madeline, Samuel, & Josie Baynes, IN
MATTINGLY 1885 2/7/18 77337D



CHAMPION EWE

Cynthia Connolly, NC
LAZY 5 3104 5/1/17 71240D



RESERVE CHAMPION EWE

Alexis Hickman, IN
FLANDERS VIP 8825 3/13/18 74875D

**-FITTED DIVISION-
SENIOR RAM LAMBS**

1- Jenna Sullivan, CT			
SULLIVAN 1802	9/14/17	603802	
2- Sam Bobendrier, MN			
BOBENDRIERBOYS17-101	9/5/17	604796	
3- Mikara Anderson, PA			
HELD 17-1975	10/14/17	603918	
4- Kathryn Person, IL			
TIFF 376	10/10/17	605225	

JANUARY RAM LAMBS

1- Owen Torrance, IL			
BOBENDRIER 18-34	1/16/18	604667	
2- Danielle Houghtaling, SD			
HOUGHTALING18-795RRNP	1/23/18	604480	
3- Tineigh Spoonster, MO			
SPOONSTER 18-01	1/5/18	604804	
4- Brandt Spilde, WI			
RIKOW 8040	1/12/18	603955	

FEBRUARY AND LATER RAM LAMBS

1- Jason Mazepink, PA			
HOMERUN1805 'BIGMIKE'	2/1/18	603960	
2- Kathryn Person, IL			
K PERSON 18-03	2/10/18	604556	
3- Ashton Daniels, MO			
PLAZA HAMPS 1409	3/1/18	604498	
4- Jenna Sullivan, CT			
SULLIVAN 1806	2/2/18	605247	
5- William Taylor, KY			
TAYLOR STOCK 870	2/18/18	604285	
6- Cailey Cahoon, IL			
CAHOON 512 RRNN	2/16/18	604745	
7- Ashton Daniels, MO			
PLAZA HAMPS 1388	2/4/18	604491	
8- William Taylor, KY			
TAYLOR STOCK 876	3/2/18	604286	
9- Sam Bobendrier, MN			
BOBENDRIERBOYS18-45RR	2/1/18	604799	
10- Jenna Lindow, WI			
BAABAAACRES283RR	3/1/18	604977	



CHAMPION RAM

Jenna Sullivan, CT
SULLIVAN 1802 9/14/17 603802



RESERVE CHAMPION RAM

Jason Mazepink, PA
HOMERUN1805 'BIGMIKE' 2/1/18 603960

EARLY YEARLING EWES

1- Beau Mumm, IL			
HELD 17-1886	1/5/17	67149D	
2- Brandt Spilde, WI			
RIKOW 7044	3/5/17	68656D	
3- Mikara Anderson, PA			
PETERSON 9236	1/23/17	69327D	

4- Jenna Sullivan, CT SULLIVAN 1712	2/17/17	70069D
5- Tinleigh Spoonster, MO SPOONSTER 17-19 ET	2/1/17	67995D
6- Dylan Klug, IA KLUG HH 17-206	2/5/17	67522D
7- Trey Spoonster, MO RIKOW 7046	3/6/17	68659D
8- Mikara Anderson, PA PETERSON 9314	2/2/17	69326D
9- Grace W Powell, TN HICKMAN 1296	9/11/16	67395D
10- Dylan Klug, IA KLUG HH 16-198T 'BENZ'	9/14/16	65559D
11- Sam Bobendrier, MN BOBENDRIERBOYS17-11QR	1/6/17	68117D
12- Cailey Cahoon, IL CAHOON 445	1/21/17	68629D
13- Sam Bobendrier, MN BOBENDRIERBOYS17-05RR	1/2/17	68114D

1- Kenzie Meyer, IL MEYER 1801	11/5/17	76545D
2- Tinleigh Spoonster, MO HERRIG 1173	9/6/17	73874D
3- Mikara Anderson, PA CAHOON 501	9/12/17	74567D

SENIOR EWE LAMBS

1- Mikara Anderson, PA JADEWOOD 18008	1/4/18	75895D
2- Beau Mumm, IL MUMM 1802	1/12/18	73614D
3- Katie Hanson, OR CHAR-LANDFARMS 18-37	1/4/18	74587D
4- Jenna Sullivan, CT STRAWBERRYFIELDS 1801	1/7/18	76989D
5- Jenna Sullivan, CT SCHIEFELBEIN 1802	1/2/18	73165D
6- Brandt Spilde, WI RIKOW 8030	1/7/18	73415D
7- Kenzie Meyer, IL GOLDEN LANE B 1805	1/23/18	74328D
8- Danielle Houghtaling, SD HOUGHTALING18-794RRNN	1/21/18	75011D
9- Sam Bobendrier, MN BOBENDRIERBOYS 18-11	1/3/18	73399D
10- Sidney McAllister, OH TAYLOR STOCK 81	1/2/18	74360D
11- Sam Bobendrier, MN BOBENDRIERBOYS18-06RR	1/2/18	75888D
12- William Taylor, KY TAYLOR STOCK 819	1/16/18	74364D
13- Grace W Powell, TN CASKEY 8419	1/26/18	74988D
14- Ashton Daniels, MO PLAZA HAMPS 1378	1/1/18	75037D

SENIOR CHAMPION EWE

Beau Mumm, IL HELD 17-1886	1/5/17	67149D
-------------------------------	--------	--------

RESERVE SENIOR CHAMPION EWE

Brandt Spilde, WI RIKOW 7044	3/5/17	68656D
---------------------------------	--------	--------

JANUARY EWE LAMBS

1- Mikara Anderson, PA JADEWOOD 18008	1/4/18	75895D
2- Beau Mumm, IL MUMM 1802	1/12/18	73614D
3- Katie Hanson, OR CHAR-LANDFARMS 18-37	1/4/18	74587D
4- Jenna Sullivan, CT STRAWBERRYFIELDS 1801	1/7/18	76989D
5- Jenna Sullivan, CT SCHIEFELBEIN 1802	1/2/18	73165D
6- Brandt Spilde, WI RIKOW 8030	1/7/18	73415D
7- Kenzie Meyer, IL GOLDEN LANE B 1805	1/23/18	74328D
8- Danielle Houghtaling, SD HOUGHTALING18-794RRNN	1/21/18	75011D
9- Sam Bobendrier, MN BOBENDRIERBOYS 18-11	1/3/18	73399D
10- Sidney McAllister, OH TAYLOR STOCK 81	1/2/18	74360D
11- Sam Bobendrier, MN BOBENDRIERBOYS18-06RR	1/2/18	75888D
12- William Taylor, KY TAYLOR STOCK 819	1/16/18	74364D
13- Grace W Powell, TN CASKEY 8419	1/26/18	74988D
14- Ashton Daniels, MO PLAZA HAMPS 1378	1/1/18	75037D

FEBRUARY EWE LAMBS

1- Jenna Sullivan, CT SULLIVAN 1807	2/1/18	74392D
2- Tinleigh Spoonster, MO PLAZA HAMPS 1398	2/9/18	75036D

3- Izzy Wade, IN SCF 801 ET	2/15/18	75745D
4- Kathryn Person, IL K PERSON 18-04	2/10/18	75233D
5- William Taylor, KY TAYLOR STOCK 868	2/17/18	74371D
6- Danielle Houghtaling, SD HOUGHTALING18-821RRNN	2/10/18	75016D
7- Cailey Cahoon, IL CAHOON 539	2/18/18	75733D
8- Sidney McAllister, OH TAYLOR STOCK 867	2/17/18	74370D
9- Dylan Klug, IA KLUH HH 18-148	2/2/18	74134D
10- Grace W Powell, TN CAHOON 505	2/10/18	74511D

MARCH EWE LAMBS

1- Mikara Anderson, PA JADEWOOD 18066	3/11/18	75896D
2- Beau Mumm, IL MUMM 1830	3/3/18	73622D
3- Jenna Sullivan, CT STRAWBERRYFIELDS 1813	3/2/18	76999D
4- Tinleigh Spoonster, MO SPOONSTER 18-35	5/5/18	76066D
5- Sidney McAllister, OH TAYLOR STOCK 882	3/3/18	74355D
6- Ava O'Loughlin, OH DOUBLE BAR D 1818	3/2/18	75359D

JUNIOR CHAMPION EWE

Mikara Anderson, PA JADEWOOD 18008	1/4/18	75895D
---------------------------------------	--------	--------

RESERVE JUNIOR CHAMPION EWE

Landon Bewley, IN Slack 7424 IN 25-7921	3/3/17	68698D
--	--------	--------



CHAMPION EWE

Mikara Anderson, PA JADEWOOD 18008	1/4/18	75895D
---------------------------------------	--------	--------



RESERVE CHAMPION EWE

Jenna Sullivan, CT SULLIVAN 1807	2/1/18	74392D
-------------------------------------	--------	--------



**GRAND CHAMPION EWE
CHAMPION SLICK-SHORN EWE**

Cynthia Connolly, NC LAZY 5 3104	5/1/17	71240D
-------------------------------------	--------	--------



**RES. GRAND CHAMPION EWE
RESERVE CHAMPION SLICK-SHORN EWE**

Alexis Hickman, IN FLANDERS VIP 8825	3/13/18	74875D
---	---------	--------



**GRAND CHAMPION RAM
CHAMPION FITTED RAM**

Jenna Sullivan, CT SULLIVAN 1802	9/14/17	603802
-------------------------------------	---------	--------



**RES. GRAND CHAMPION RAM
CHAMPION SLICK-SHORN RAM**

Alivia Porter, IL STORMS 743 'TRUCKYEAH'	3/20/18	604530
---	---------	--------

REGISTRATION BY MEMBER

Impact Hamps, WI	118	John Allred/Clay Elliot, UT	43
University of Wisconsin, WI	101	Jim Miller, TX	41
Roselawn Legacy, ND	100	NOC Sheep Center, OK	41
Ellerbrock Club Lambs, IL	97	Warren & Pam Finder, KS	40
Tom Slack, IN	93	Plaza Hamps, MO	38
Leland H Wheaton, MI	81	Donnie Begalka, SD	38
Joe Cabaniss Family, OK	77	Held's Hampshires, SD	37
Johnson Family Show Stock, WI	77	Keith Barns, OH	36
Pine Lawn Farm, MN	75	McNeil Hampshires, UT	35
Kleinert Hampshires, IL	72	Skipper Bill Wilson, OK	35
Travis, Tyler, & Alicia Nelssen, KS	70	Kyla, Kade, & Kinsey Mennen, IN	34
Jerry Flanders, IN	68	Cole Club Lambs, OK	34
Stanley Poe & Sons, IN	65	Epperly Hampshires, ND	33
Haws Club Lambs, TX	62	Richard Krackow, WI	33
Ott Club Lambs, OK	62	Beau Mumm, IL	32
Bobendrier Hampshires, MN	60	Ronald Willwerth & Family, IA	32
Jeffrey Club Lambs, WY	59	Steve Swenka, IA	32
Abigail Wilson, NC	52	Farao Club Lambs, CA	31
Iowa State University, IA	48	Charmasson Club Lambs, OK	30
South Dakota State University, SD	48	Tim & Sarah Fleener, PA	30
Schmitz Club Lambs, IA	47	Houghtaling Hamps, SD	30
Hewlett Club Lambs, KS	46	Alf Hampshires, WI	30
Deckert Hampshires, ND	45		

TRANSFER BY MEMBERS

Jim Miller, TX	161
Jerry Flanders, IN	158
Hubbard-Roselawn Hampshires, OR	127
Lazy 5 Ranch, NC	101
Impact Hamps, WI	88
Stanley Poe & Sons, IN	75
Joe Cabaniss Family, OK	64
South Dakota State University, SD	52
Alf Hampshires, WI	46
Tom Slack, IN	45
Ott Club Lambs, OK	45
Randy Dombek, MN	45
Pine Lawn Farm, MN	40
Leland H Wheaton, MI	37
Roselawn Legacy, ND	33
Abby Nightingale, TX	33
University of WI, WI	30
Wrights Rocky Acres, MO	28
Donnie Begalka, SD	26
Turner Show Stock, TX	26
Daniel & Kris Myers & Family, IN	26
Bobendrier Hampshires, MN	25
Epperly Hampshires, ND	22
Johnson Family Show Stock, WI	22
Beverly Heier, SD	22
Deckert Hampshires, ND	22
Jo Dee Rexwinkle, OK	21
David Graber, MT	20
Ronald Willwerth & Family, IA	20
Ted Van Horn, KS	20
Allen Show Lambs, OK	20
Helming Hampshires, CO	20
NOC Sheep Center, OK	20

REGISTRATION BY STATE

Oklahoma - 717	Iowa - 353	Kentucky - 127	Washington - 63	Florida - 21	New Jersey - 9
Illinois - 682	Kansas - 287	Nebraska - 118	New York - 61	New Hampshire - 21	West Virginia - 8
Wisconsin - 629	Ohio - 282	Utah - 116	Tennessee - 57	Delaware - 20	Arkansas - 7
Indiana - 592	Pennsylvania - 260	Oregon - 111	Virginia - 47	Georgia - 18	Louisiana - 5
South Dakota - 536	Missouri - 246	Wyoming - 107	Montana - 44	Connecticut - 16	Alabama - 2
Minnesota - 504	North Dakota - 233	Michigan - 94	Maryland - 34	Maine - 11	
Texas - 391	California - 232	North Carolina - 85	Massachusetts - 24	Nevada - 11	
	Colorado - 130	Idaho - 65	Rhode Island - 22		

AMERICAN HAMPSHIRE SHEEP ASSOCIATION FINAL FUTURITY STANDINGS

FITTED PURCHASED DIVISION

PLACE	NAME	ANIMAL ID	BREEDER
1	TINLEIGH SPOONSTER, MO	PLAZA LIVESTOCK 1398	PLAZA LIVESTOCK, MO
2	TINLEIGH SPOONSTER, MO	HERRIG 1173	HERRIG FAMILY HAMPSHIRE, MN
3	DYLAN KLUG, WI	RIKOW 8034	RIKOW HAMPS, WI
4	MIKARA ANDERSON, PA	CAHOON 501	CAILEY CAHOON, IL
5	CONNLEY HOAGLAND, MT	SPOONSTER 18-018	TINLEIGH SPOONSTER, MO
6	GRACE POWELL, TN	PINE LAWN FARM 8419	PINE LAWN FARM, MN
7	KELSEY SWONGER, KS	PINE LAWN FARM 7754	PINE LAWN FARM, MN
8 (TIE)	KELSEY SWONGER, KS	GOLDEN LANE FARMS 1734	GOLDEN LANE FARM, MN
8 (TIE)	AVA O'LOUGHLIN, OH	DOUBLE BAR D 1818	DOUBLE BAR D HAMPS, OH
10	BRYDON MCKOWEN, TN	KLUG HH17-15	HIGHLAND HAMPS, IA

FITTED RAISED DIVISION

PLACE	NAME	ANIMAL ID	BREEDER
1	DYLAN KLUG, WI	KLUG 148	DYLAN KLUG, WI



SLICK SHORN PURCHASED DIVISION

PLACE	NAME	ANIMAL ID	BREEDER
1	MORGAN HAUGER, IN	POE 8094	POE HAMPSHIRE, IN
2	RACHEL OLVER, PA	FCL 1802	FLEENER CLUB LAMBS, PA
3	RACHEL OLVER, PA	FLEENER 1849	FLEENER HAMPSHIRE, PA
4	CORBIN COYLE, KY	POE 8108	POE HAMPSHIRE, IN
5	CAMPBELL COYLE, KY	POE 8014	POE HAMPSHIRE, IN
6	CLARK COYLE, KY	POE 8171	POE HAMPSHIRE, IN
7	CORBIN COYLE, KY	POE 8038	POE HAMPSHIRE, IN
8	CLARK COYLE, KY	POE 8029	POE HAMPSHIRE, IN
9	HANNAH SCHULTZ, WI	METRO 1845	METRO HAMPS, WI
10	COLE SLARK, WI	RUPNOW 1314	RUPNOW HAMPS, WI

SLICK SHORN RAISED DIVISION

PLACE	NAME	ANIMAL ID	BREEDER
1	TY THORSON, WI	METRO 1849	METRO HAMPS, WI
2	TY THORSON, WI	METRO 1824	METRO HAMPS, WI
3	MORGAN HAUGER, IN	HAUGER 0402	MORGAN & MADDIE HAUGER, IN

New Members

**FROM JANUARY 31, 2018 TO
FEBRUARY 10, 2018**

CALIFORNIA

RICHARD CLOWER

FLORIDA

DOREEN KISACKY

IDAHO

**WOLFE FAMILY FARMS -
JOEL & REBECCA WOLFE**

INDIANA

**BEELER FARMS - JASON &
JENNI BEELER**

KAITLYN & JOEY HICKS

MICHIGAN

ROWEN OAK FARM

MINNESOTA

A FEW BIRDS & A HERD - ADEL

RAGHEB

BRADY CARTER

RICHARD NELSON

NEBRASKA

JUSTIN HENNESSY

OHIO

JAMES CROSKEY

WOLF BROS LIVESTOCK

PENNSYLVANIA

JONATHAN MAY

WADE A. PEARSON

TEXAS

KATHRYN HEINTZ

COLT SHARPTON

UTAH

FLYING V LIVESTOCK - VICTORIA

CARROLL

WEST VIRGINIA

BARBARA DAVIS

WISCONSIN

**D & M CLUB LAMBS - BROOKE &
SCOTT DAVIS & BRADEN, CAMI &
CASSIDY PUNZEL**

ALL AMERICAN JUNIOR SHOW

The 26th annual All American Junior Show will be held at the Kansas State Fairgrounds, in Hutchinson, Kansas on July 3rd- 7th 2019. Plans are well underway for the 2019 AAJS, please refer to the website (www.allamericanjuniorshow.com) for updates & entry blanks. Entries are due no later than May 25th, 2019. Last year's show in Indiana had around 2,500 head of sheep shown and we are expecting a much larger show in 2019 than we had in 2014 in Kansas!

AHSA FUTURITY BREEDER NOMINATIONS

The American Hampshire Sheep Association is encouraging breeders to support the Hampshire Futurity with the opportunity to nominate their entire 2018 fall and 2019 spring lamb crops. There is a one time fee of \$200 to nominate all ewe lambs that you register that were born before May 1st, 2019. This includes all ewe lambs sold privately, through online sales or through public auctions. This does not replace nominating individual ewe lambs sold privately or through auctions. There is a form on the Hampshire website to nominate your entire lamb crop or you can call Jeff at 785-456-8500 for more information.

Featuring Rachel Olver



Introduce yourself & your family.

My name is Rachel Olver and my parents are Mark and Tammy Olver. I'm from Beach Lake, Pennsylvania. I am 16 years old and in 11th grade at Honesdale High School. I am an eight year member of the Calkins Ag 4-H club, and a two year member of the Honesdale FFA chapter. I serve as an officer and am deeply involved in both programs. My high school has recently added an agriculture program and I am enrolled in many of the ag courses, which I believe will help me with my future career. I have maintained honor roll status each year. This summer I was appointed to Governor Wolfe Youth Council for Hunting and Fishing and Conservation for the state of Pennsylvania. I am a member of the Varsity Cross Country and Track and Field teams.

Give us a brief description of your Hampshire Flock.

In my flock there are 6 Hampshire ewes, one Hampshire ram, and 15 crossbred ewes. I am anxiously awaiting lambing season in January.

Favorite show you have attended and why?

My favorite show which I attended was the Northeast Youth Sheep Show at the Eastern States Expo in Springfield, MA. This show was a lot of fun and the best part was that the youth had to get their sheep ready for the show and parents weren't allowed to help in any aspect. It was enjoyable because there was a sense of camaraderie, as children of all ages helped and supported each other. I made many long lasting friendships at this show, and always look forward to seeing the friends that I made there at other shows.

What do you like about Hampshires?

I like the calm, friendly disposition of Hampshires, and the breed characteristics such as shaggy legs.

What is your fondest sheep memory?

It's hard to pick just one moment, so I'll share a few. The first memory is attending NAILE, for the first time, in 2017 and winning Junior Champion Slick Shorn Hampshire Ewe. Another favorite moment is when a family friend's daughter, who is six, showed one of my ewes. I have to admit it was pretty adorable when she beat me and walked around with the medal on her neck. She was on cloud nine and I was very proud of her. Ending the 2018 show season with second and third place in the Futurity Programs was pretty exciting too!

Future plans and goals.

I will continue to show my Hampshires at the local, state, and national levels, and mentor younger kids in the livestock industry. I plan to attend a four year university and get a degree in Environmental Science, then become a Pennsylvania Game Warden.

Advice you would like to share with junior Hampshire members?

Don't wait to get involved, I was 15 when I started showing Hampshires, and I wish I could've begun many years earlier. Never be nervous about going to a bigger show, it's a great way to learn and improve your skills. Don't be afraid to ask questions, it's a way to gain more knowledge. Things may not always be easy, but don't give up; my sheep have taught me hard work is the path to success. Lastly, believe in yourself and have confidence, it shows in the ring!



AHSA FINANCIAL STATEMENT JANUARY 1, 2018 - DECEMBER 31, 2018

INCOME

HAMPSHIRE INCOME:	152,903
OTHER BREED INCOME:	189,311
INTEREST INCOME:	518

TOTAL INCOME: 342,732

EXPENSE

OFFICE:	79,455
RENT:	11,747
PAYROLL:	117,316
TRAVEL:	17,630
PROMOTION:	72,318

TOTAL EXPENSES: 298,466
NET INCOME: 44,266

CURRENT ASSETS AS OF DECEMBER 31, 2018

CHECKING:	109,161.64
CD-1789:	6,221.33
CD-1701:	7,133.65
CD-4227:	10,226.60
CD-1984:	50,000.00

TOTAL ASSETS: 182,743.22

HOWELL CLUB LAMBS



SIRES FOR 2019 LAMBS:

Viking's (Manchild)
Crego 7005 (Roomba)

Howell Club Lambs

8582 Township Line RD | Celina, OH 45822

PH. 419-953-0238 | Larryhowell@Bright.net

www.Howellclublambs.com

AHSA ONLINE SALE

The American Hampshire Sheep Association will sponsor two spring online sales. These sales will be hosted by wlivestock.com and will be held April 30th and June 11th. Entry forms with rules may be found on the Hampshire website (www.hampshires.org), as well as in this issue of the Heartbeat. The entry deadline will be no later than ten days before the date of the sale. These sales will offer yearling rams and ewes as well as ram and ewe lambs, for more information please contact the American Hampshire Sheep Association at 785-456-8500.

NATIONAL HAMPSHIRE SALE

The National Hampshire Sale will again be held in conjunction with the Midwest Stud Ram Sale. The sale will again be managed by the Heartland Group. The Hampshire show will be Wednesday, June 26th at 8:00am with Greg Ahart as the judge. The Hampshire Wether Sire & Dam show will be Thursday, June 27th at 8:00am with Jimmy Davis as the judge.

The National Hampshire Sale will be the first sale on Friday, June 28th at 8:00am and the National Hampshire Wether Sire & Dam sale will be Saturday June 29th following the club lambs at 8:00am. For further details on the sale please go to www.midwestsale.com.



We raised HIM,
his SIRE,
his GRAND
DAM,
and his
GREAT
GRAND DAM



We also bred the
2nd place January
ewe lamb

Semen available for \$125,
including LAP-AI services at
our facilities.

Champion Hampshire Ram

Storms Hampshires,
Dorsets, and Border Collies

2018 NAILE
Jr. and Open
Shows

www.stormshampshires.com
Mike, Lee, and Suzanna Storms
309-645-3052 mstorms@hughes.net



HAMPSHIRE JUNIOR SHOW DURING THE NATIONAL HAMPSHIRE SHOW AT SEDALIA

The AHSA is sponsoring a show for AJHSA members at Sedalia on Tuesday evening, June 25, 2019. There will be classes for yearling ewes and ewe lambs. Fitted and slick shorn classes will be offered as well as three age groups of showmanship classes.

Requirements:

- ❖ Must be a member of the American Junior Hampshire Sheep Association
- ❖ No entry fee for your first entry
- ❖ \$15 entry fee for all animals after the first entry
- ❖ Showmanship is free!



Sale discounts to be used on Hampshires at the Midwest Stud Ram Sale, as well as, cash prizes will be offered. This includes \$200 for the Champion ewe, \$100 for the Reserve Champion Ewe, and \$100 for each showmanship class winner.



North American International Livestock Exposition

Junior Hampshire Wether Show Results

Louisville, KY - November 10, 2018

Junior Wether Show Judge: Jimmy Davis, OK

HAMPSHIRE WEIGHTS 95-125

- 1- Addison Harlow, Prairie Grove, AR
- 2- Kyra Elliot, Calumet, OK
- 3- Mackenzie Castro, Napoleonville, LA
- 4- Paige Teeters, Hillsboro, OH
- 5- Brody Scroggins, Moore, OK
- 6- Allison Smith, Emporia, KS
- 7- J Cook, Franklin, GA
- 8- Linda Issacs, Petersburg, KY
- 9- Austin Maners, Santa Rosa, CA
- 10- Austin Wright, Greencastle, IN

HAMPSHIRE WEIGHTS 126-135

- 1- Cade Charmasson, Hennessey, OK
- 2- Rylee Anderson, Ault, CO
- 3- Mackenzie Castro, Napoleonville, LA
- 4- Maci Meads, Kennewick, WA
- 5- Morgan Evans, Richwood, OH
- 6- Sidney Gossard, Ada, OH
- 7- Kelby Roberts, Falmouth, IN
- 8- Emily Powers, Grottoes, VA
- 9- Tyler Wilkerson, San Luis Obispo, CA
- 10- Caden Johnson, Lebanon, IN

HAMPSHIRE WEIGHTS 136-142

- 1- Blake Homann, Charleston, IL
- 2- Neal Ehler, Fairbury, NE
- 3- Kashen Ellerbrock, Atkinson, IL
- 4- Bree Elliot, Calumet, OK
- 5- Johnna Stottlemire, Luther, OK
- 6- Tanner Norton, Cairo, GA
- 7- Gabrielle Raute, Carmel, IN
- 8- Colby Williams, Mabel, MN
- 9- Kylee Silliman, Kirkville, IA
- 10- Caley Mayo, Whitakers, NC

HAMPSHIRE WEIGHTS 143-147

- 1- Lydia Straka, Yukon, OK
- 2- Madison Rule, Hawarden, IA
- 3- Hayden Schroeder, Zephyr, TX
- 4- Lane Slaton, Noblesville, IN
- 5- Sam Schmillen, Marcus, IA
- 6- Gabrielle Raute, Carmel, IN
- 7- Tyler Heuer, Greensboro, GA
- 8- Sarah Young, Leesburg, OH
- 9- Shepard Daulton, Maysville, KY
- 10- Payton Britton, Chillicothe, MO

HAMPSHIRE WEIGHTS 148-152

- 1- Hudson Franklin, Shallowater, TX
- 2- Jaylin Smith, Eastland, TX
- 3- Cate Cherney, LaValle, WI
- 4- Brayden Bowers, Lafayette, IN
- 5- Bailee Amstutz, Richwood, OH
- 6- Logan Jackson, Olden, TX
- 7- Hannah Blankenship, Tazewell, VA
- 8- Kole Justin, Richwood, OH
- 9- Morgan Evans, Richwood, OH
- 10- Kaylie Stone, Gurdon, AR

HAMPSHIRE WEIGHTS 153-157

- 1- Kailen Urban, Gotebo, OK
- 2- Aubri Wrye, Estancia, NM
- 3- Sophie Rosen, Urbana, IN
- 4- Sam Schmillen, Marcus, IA
- 5- Alex Raute, Carmel, IN
- 6- Neal Ehler, Fairbury, NE
- 7- Bailee Amstutz, Richwood, OH
- 8- Delila Meyers, St. Paris, OH
- 9- Joslin Gourley, Webster City, IA
- 10- Laurem Frink, Eaton, CO

HAMPSHIRE WEIGHTS 158-165

- 1- Logan Jackson, Olden, TX
- 2- Brooke Bowen, Connersville, IN
- 3- Alex Raute, Carmel, IN
- 4- Maddie Sheiss, Bringham, IN
- 5- Kendal Rosen, Urbana, IN
- 6- Morgan Evans, Richwood, OH
- 7- Karlyn Snider, Rhodes, IA
- 8- Stratton, Wotowey, Fort Collins, CO
- 9- Justin Rupnow, Nemaha, IA
- 10- Taylor Busenburg, Mentone, IN

HAMPSHIRE WEIGHTS 166-195

- 1- Cache Wrye, Estancia, NM
- 2- Madison Rule, Hawarden, IA
- 3- Talan Hiemstra, Marcellus, MI
- 4- David Vetter, Bennett, CO
- 5- Katherine Olson, Cheyenne, WY
- 6- Jillian Keller, Piqua, KS
- 7- Carson Kazee, Ft. Jennings, OH
- 8- Justin Rupnow, Nemaha, IA
- 9- Garrett Arnold, Webster City, IA
- 10- Nicole Sutter, Central City, IA

CHAMPION HAMPSHIRE WETHER

Logan Jackson, Olden, TX

RESERVE CHAMPION HAMPSHIRE WETHER

Lydia Straka, Yukon, OK



CHAMPION HAMPSHIRE WETHER

Logan Jackson, Olden, TX



RESERVE CHAMPION HAMPSHIRE WETHER

Lydia Straka, Yukon, OK

KLEINERT HAMPSHIRE

"Quality Breeding Lasts Forever"

*Online sales at Willoughby Sales:
Spring Sale on April 6th & Production Sale on May 4th*

MILLER O-470



MILLER O-175



The investment in Miller O-175 (genetic full brother to 2012 Houston Grand) and Miller O-470 (Maternal brother to 2012 Forth Worth Grand) is paying long term dividends in the quality and depth of our ewe base and lamb crops. We invite you to add Kleinert Hampshires to your list of stops as you search for your next show lamb or breeding piece.

KLEINERT 5134



????



KLEINERT 5228



MIKE KLEINERT | KLEINERT HAMPSHIRE
2873 N 1600 EAST RD. | CLIFTON, IL 60297

CALL OR TEXT: 815.383.0962 | KLEINERTHAMPSHIRE@YAHOO.COM | WWW.KLEINERTHAMPSHIRE.COM

State Hampshire Associations

OHIO HAMPSHIRE SHEEP ASSOCIATION OFFICERS

President: Dan Shell
1901 Doak Road
Midland, Ohio 45148
Phone: 937 302-8367
Email: Shellshampshires@hotmail.com

Secretary/Treasurer: Marla Shell
1901 Doak Road
Midland, Ohio 45148
Phone: 614 496-8575
Email: mdshell319@hotmail.com

Vice-President: Frank Sexten
3420 State Route 380
Xenia, Ohio 45385-9735
Phone: 937 371-1392
Email: fsexten@gmail.com

Board of Directors:
Denise Deal
Frank Sexten

This information was provided by state Hampshire associations. We encourage all of our state Hampshire associations to submit information on their activities for each issue of the Hampshire Heartbeat.

ILLINOIS HAMPSHIRE SHEEP ASSOCIATION OFFICERS

President: Megan Mumm
49 CR 1300 N
White Heath, IL 61884
Phone: 217-377-2073
Email: meganmumm@hotmail.com

Secretary/Treasurer: Bill Chapin
5680 E Reed Rd
Coal City, IL 60416
Phone: 815-954-5129
Email: chapinhamps@gmail.com

Directors:
Chris Cahoon
Luke Benjamin
Chris Meyer
Charlotte Toohill

New England Hampshire Sheep Association Officers

President: Kyle Thayer
Vice President: Darlene Leary
Treasurer: Tina Fisk Colt
Secretary: Sue Searle

MINNESOTA HAMPSHIRE SHEEP ASSOCIATION OFFICERS

President: Rod Scheller
3646 County Rd 37
Monticello, MN 56362
Email: rodscheller@gmail.com

Vice-President: Bruce Bakken
29557 State Hwy 13
Hartland, MN 56042
Email: bjbakken54@gmail.com

Secretary/Treasurer: Art Frame
16465 Paul Ave.
Worthington, MN 56187
Email: aframe@nobleswildblue.com

Director: Mark Christensen
1561 250th Ave.
Tyler, MN 56178
Email: mcchris@frontiernet.net

Director: Gary T. Klug
Box 383
Harlan, IA 515372
Email: klughihamp@tm.net

Director: Reid Merrill
2163 250 St
Canby, MN 56220
Email: rvmerrill50@gmail.com

Director: Todd Schmidt
21407 775th Ave
Albert Lea, MN 56007
Email: rschmidt76@gmail.com

Director: Tom Bobendrier
1351 US Hwy 75
Pipestone, MN 56164
Email: shebob@svtv.com

SOUTH DAKOTA HAMPSHIRE SHEEP ASSOCIATION OFFICERS

President: Brent Larson
20205 477th Ave
White, SD 57576
Phone: 605-633-1561
Email: larson76@gmail.com

Vice President: David Juntunen
43950 187th Ave
Vienna, SD 57271
Phone: 605-628-2949
Email: jute@itctel.com

Secretary: Kristin Marshall
45491 204th ST
Arlington, SD 57212
Phone: 605-770-0132
Email: marshallke83@outlook.com

INDIANA HAMPSHIRE SHEEP ASSOCIATION OFFICERS

President: Dan Myers
833 E CR 350 S
Logansport, Indiana 46947
Phone: 574-355-6840
Email: indianahamps@gmail.com

Secretary/Treasurer: Kris Myers
833 E CR 350 S
Logansport, Indiana 46947
Phone: 574-355-6840
Email: indianahamps@gmail.com

PENNSYLVANIA HAMPSHIRE SHEEP ASSOCIATION OFFICERS

President/Secretary: Mindy Holtry
717-776-4192

The main focus of the PHSA is to support junior Hampshire exhibitors at the Keystone International.

Ted Van Horn - New District 5 Director

My sheep interest started with a 4-H project. When I was seven, I purchased several bred registered Hampshire ewes from Waldo Farms of DeWitt Nebraska. I have had Hampshire ewes ever since. My daughter, Jansyn, and I currently run around 35 Hampshire ewes and 15 Shropshire ewes. We sell a few 4-H lambs to local kids in the area and we try to show at the Kansas and Nebraska State Fairs.

I am currently the County Executive Director, (CED), of Pawnee & Edwards County FSA Offices in Kansas.

My main goal as a director of the Hampshire Board is to keep promoting the breed any way possible. The Hampshire breed right now is on top and we need to make sure it stays that way.

We need to know that everyone has a different idea of the ideal Hampshire and respect others that have a different opinion than ours. We all like to raise what we like and would not be in the business if we were raising animals that we did like to go feed and look at.

I would like to try keep the breeds shows in our County, district and State Fairs. This is a way to keep the breeds important. The people that run the shows say black face and white face and weigh them up is easier for them. We need to support and help and give feedback to these shows to keep the breed show's important.

I recently got married to Kris, she currently works at the Farmers State Bank in Jetmore, Kansas and is trying to adjust to lambing season on the farm.

We are excited to host the All American Junior show in Kansas in 2019.



Dina King - New District 1 Director

My start in the sheep industry was a Suffolk market lamb that I exhibited at the Sonoma County Fair. At eight years old, wide-eyed and eager, I wanted to learn everything I could about feeding, showing and fitting. Back then, the market lambs were fitted and I watched how our family friend, Alyce, turned Susie the Suffolk from scruffy to sparkling. That one lamb sparked my passion for sheep and I started my small flock of Hampshires with three aged Hogg-Hubbard ewes. The sheep became a family affair with my dad, mom, and sister. We grew our program to 75 Hampshire and Suffolk ewes on our small farm in Santa Rosa, CA. Summer was always my favorite time of year squeezing in as many shows and sales as the calendar would allow. We traveled up and down the west coast and regularly headed east to Colorado and Missouri.

As an active member in 4-H I joined several projects, held three officer positions in my club, was a Sonoma County All-Star and a 4-H Sheep State Winner. Aside from my sheep, my favorite project was livestock judging. I was encouraged by my older cousins to join the judging project and learn how to give reasons. My mom reminds me how petrified I was to get in front of the official judge and say my piece. Little did I know this would evolve into a life-long passion. I was fortunate to be a member of back-to-back State Champion Judging Teams in 4-H and FFA and will always be grateful for the support of my coaches and team members for the skills learned and memories made. I attended Santa Rosa Junior College and met my husband on a blind date, thanks to a good friend's creativity. We attended California Polytechnic State University where I earned my Bachelor of Science degree in Agribusiness Marketing. We settled back in Sonoma County, got married and had two daughters. When the girls were old enough for 4-H we let them choose their projects and discover what sparked their passion. Courtney chose pigs, Amanda chose sheep and both enjoyed showing Holstein heifers from the King Brothers dairy. King Diamond Ranch has evolved in Petaluma, CA where we raise registered Hampshire sheep, a handful of wether dams and a sow operation focused on Yorkshire, Berkshire and Crossbred hogs. Like when I was young, it is a family adventure where everyone plays a part in the program.

My parents taught me the importance of volunteering and giving back. I have been coaching 4-H and FFA livestock judging teams for the past ten years. It is a time commitment during a busy time of year but the returns are worth it. Nothing is more rewarding than watching a shy, indecisive kid blossom into a confident, well-spoken individual. I have been involved in our youth organizations and now am shifting my focus to the American Hampshire Sheep Association. As the District 1 Director my goal is to spark involvement with west coast breeders and encourage youth participation in the organization. I have learned that kids want to get involved but often need more guidance from their leaders and adults. We have a great group of young members and I am excited about our plans for this year.



Held's Hampshires

AURORA, SD 57002

JEFF | MARY | AUSTIN | AARON

CELL (JEFF): 605.690.7033

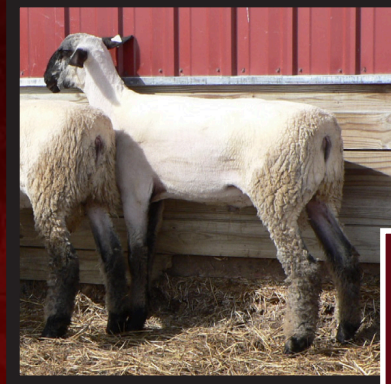
HELDHAMPSHIRE.COM | HELDHAMPS@GMAIL.COM

Held Hampshire's again had a great run at Louisville even without us exhibiting! Senior Champion Ewe for Beau Mumm in the junior show; Res. Jr. Champion Ewe on 1st March Ewe lamb exhibited by Plaza Hamps.



Plaza1412

Res Jr. Champion Ewe
2018 NAILE, 1st March ewe lamb.
Sired by Held "Runaway".
Payne's exhibited several other top
placing lambs by "Runaway",
a stud owned by Baa Baa Acres, WI.



Held 17-1943 NNP RR

Sired by our 2nd Feb ram lamb
at 2016 NAILE.
Austin Schiefelbein MN reports a some
exciting early 19' Jan lambs by this
neatly designed fall ram lamb!

Baa Baa Acres 268

3rd place Feb ewe lamb at NAILE.
Sired by Held "Runaway"



Senior Champion Ewe Fitted Ewe 2018 NAILE Jr. Show



Held 17-1886 | Shown by Beau Mumm

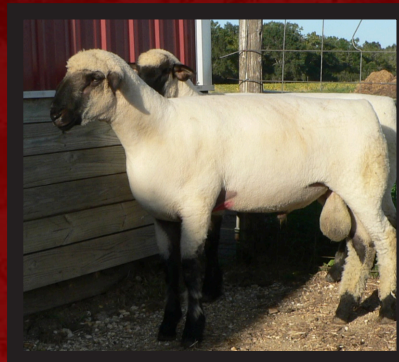


Senior Champion Ewe Fitted Ewe
2018 NAILE Jr. Show
Thanks to Beau Mumm and family for the terrific job
campaigning this ewe to many decorated winnings at
national shows and major state fairs the past 2 years. She
always looked the part....great work!!!



Held 17-1923 NNP QR

Sired by Held 15-1742
(2016 Natl Res Champ Ram (fitted)) and
dammed by Held 1073, our elite "2910"
daughter.
Have a terrific set of October '18 fall
lambs and 2019 Jan lambs by this stud!
Watch for pics this spring!!



Held 17-1951 NNP RR

Champion Ram 2018 SD State Fair.
1st fall ram lamb
Bred to our show ewes, anxiously
awaiting his late-Jan and Feb lambs!

We are extremely proud of the flocks that represented our genetics at NAILE including Baa Baa Acres, Spoonster Hampshires, Payne Hamps, Mikara Anderson, Char-land Hampshires, Benjamin Hampshires, Mumm Hampshire's and along with others too! Although Held's Hampshires were physically absent from NAILE in 2018 we expect to return in 2019!

Watch for fall lambs and early Jan lamb pic posts on our web page by April 1....or so!!! Consignments in 2019: Heart of a Champion Online Sale, AHSA Online Sales and Midwest Stud Ram Sale. Always have sheep available off the farm too!!

CONSISTENT GENETICS CONSISTENT RESULTS

SELLING OUR TOP PROSPECTS

★ NATIONAL HAMPSHIRE SALE AT SEDALIA

★ 6TH ANNUAL ONLINE SHARING THE GENETICS SALE MAY 2, 2019 AT WLIVESTOCK.COM

RESERVE CHAMPION RAM
FIRST FEBRUARY RAM LAMB
2018 MINNESOTA STATE FAIR
Sired by "ENCORE"
FOURTH FEBRUARY RAM LAMB
AT 2018 NATIONAL SHOW



CHAMPION EWE
FIRST JANUARY EWE LAMB
2018 MINNESOTA STATE FAIR
Sired by "STRAIGHT EDITION"
SECOND JANUARY EWE LAMB
AT 2018 NATIONAL SHOW



FIRST MARCH RAM LAMB
2018 MINNESOTA STATE FAIR
Sired by "GOLD EDITION"
SOLD TO WALLUM HAMPSHIRE, SD



FIRST FEBRUARY EWE LAMB
2018 MINNESOTA STATE FAIR
Sired by "STRAIGHT EDITION"



FIRST MARCH EWE LAMB
2018 MINNESOTA STATE FAIR
Sired by "STRAIGHT EDITION"

MIKE, CARRIE, JASON & KYLE CASKEY
1222 171ST ST. HOLLAND, MN 56139

PH: 507.347.3229 | CELL: 507.215.0266

MCCASKEY@WOODSTOCKTEL.NET | WWW.CASKEYPINELAWNFARMS.COM



**PINE
LAWN
FARMS**

ASI ANNUAL CONVENTION WRAPS UP

The American Sheep Industry Association's 2019 Annual Convention marched into New Orleans Jan. 23-26 and marched out with new officers and a revamped executive board to lead the industry through the challenges of the new year.

Benny Cox of San Angelo, Texas, was elected president to succeed Mike Corn of New Mexico. His personal involvement in sheep - whether it be in production, feeding or trading - has lasted more than 50 years. Cox is a past president of the Texas Sheep and Goat Raisers' Association and has been a member of ASI's Lamb Council. He is joined on the officer team by vice president Susan Shultz of DeGraff, Ohio, and secretary/treasurer Brad Boner of Glenrock, Wyo.

There were four changes to the ASI Executive Board. Steve Clements of South Dakota was elected to represent region four. Randy Tunby of Montana was elected in region seven, and region eight elected Sarah Smith of Washington. Finally, Bob Harlan of Wyoming stepped into the National Lamb Feeders Association position on the board.

The ASI Lamb Council crafted grassroots policy on the industry's response to current and emerging alternative sources of protein, including laboratory-cultured proteins. Having closely monitored the development of these products and the evolving regulatory framework, members of ASI weighed in supporting the administration's approach of joint oversight between the U.S. Department of Agriculture Food Safety Inspection Service and the Food and Drug Administration.

The policy clearly states that the association opposes any efforts to mislead consumers or disparage traditionally produced natural lamb in product promotion, advertising or labeling. ASI will remain at the forefront of this conversation as the development, regulation and marketing of these products moves forward. America's sheep producers are proud of the healthy lamb they raise and only aim for a level playing field to ensure consumers have the information needed to make decisions that are in their family's best interest.

ASI was pleased to present former House Agriculture Committee Chairman Mike Conaway (Texas) with the industry's highest honor - the Joe Skeen Award. In his tenure as chairman, Conaway drafted the most favorable House version of the Farm Bill for the sheep industry in more than three decades. Conaway fought hard for inclusion of the industry's priorities, not just in the House bill, but all the way through the conference with the Senate to the bill signed by the president.

But Conaway wasn't the only award winner at the 2019 ASI Annual Convention. North Dakota's Burdell Johnson earned the McClure Silver Ram Award for a lifetime of service to the sheep industry. He has been a regular attendee at the convention for the past two decades and volunteers his time to serve as auctioneer for both the Rams PAC and the ASI Women's auctions. He was also instrumental in creating the Young Entrepreneur group that included more than 70 attendees at this year's annual convention. He continues to mentor the group to this day.

Montana dominated the Friday awards luncheon, picking up honors in three of the five categories awarded by ASI. Producer John Helle became just the second winner of the Industry Innovation Award for his efforts in leading the family operation to begin manufacturing its own wool clothing line: Duckworth.

He was joined onstage by John and Nina Baucus, who were selected for the Distinguished Producer Award. The husband and wife team have both held leadership positions at the state and national levels through the years while continuing to work on their historic ranch near Helena, Mont. Ag broadcaster Russell Nemetz, also of Montana, was named the Shepherd's Voice Award winner for his efforts to promote the sheep industry through the media.

While he wasn't on hand for the convention, former ASI staffer Paul Rodgers of West Virginia joined the full board of directors meeting via Skype. In addition to recognizing Rodger's 2018 retirement, ASI officers honored him with the association's Campender Award for his efforts on everything from animal health to LRP-Lamb insurance to mandatory price reporting in three-plus decades of service with the association.

Look for extensive coverage of the ASI Annual Convention in the March issue of the Sheep Industry News.

KJELDGAARD FARMS

"Our passion, sheep with style and size."

WE LIKE OUR GIRLS

For nearly 50 years we've had the same vision of what we wanted our ewes to look like. athletic, large framed, sound, pretty and functional in the barn. We still have that same vision even when trends and fads have come and gone. From the start our philosophy has been to breed the best females in the breed. This has been and always will be the cornerstone of our breeding program. Behind every great Stud ram in our program, stands an unbelievable female that can stand up to the competition in the show ring, but most importantly EXCELS in the lambing barn.

WE MAKE OUR GIRLS DO THEIR PART, AND THEY DON'T LET US DOWN.

NATIONAL CHAMPION FITTED EWE ANGIE'S PRIDE



SHE WAS ALSO CHAMPION AT IOWA.

1ST PAIR YEARLING EWES SECOND YEAR IN A ROW LADY GAGA & ANGIE'S PRIDE



ALL SHEEP
SIRED BY
WILLWERTH '57

2ND PAIR RAM LAMBS 2ND FEB LEFT, 1ST MARCH RIGHT



FEB RAM LAMB (ABSOLUT)

WE WILL HAVE LAMBS BY HIM. HIS DAM WAS OUR WINNING YEARLING EWE AT IOWA IN 2016, HER DAM IS SAME AS ADEL OUR WINNING YEARLING EWE LAST YEAR. MARCH RAM IS FOR SALE, HE ALSO HAS SAME DAM AS ADEL.

Al and Mary Kjeldgaard | 440 Co. Rd. IJ | Tekamah, NE 68061

almary@microlnk.com | 402.870.0397

American Hampshire Sheep Association

Director of Member Services

The American Hampshire Sheep Association and Associated Registry continue to grow and we are seeking to add to our staff. We are seeking a highly qualified individual that has a true passion for the sheep industry. We currently serve 33 associations in various ways and we are seeking a highly motivated candidate to fill this position.

Requirements:

- Passionate about livestock, specifically sheep.
- Relocation to Wamego, KS area is required.
- Some travel to shows and sales will be necessary.
- Attendance at livestock events like, NAILE, National Hampshire Sale, National Cheviot Sale, and others as the need arises.

Job Description:

- Learn and assist with all aspects of the Associated Registry Services.
- Serve as primary contact for the Junior Hampshire and Junior Cheviot associations.
- Assist junior associations in planning activities.
- Help with Hampshire Heartbeat, Cheviot Journal, Tarentaise Talk, & other publications.
- Oversee the office in the absence of the executive secretary.
- Assist with press releases and websites. We update five websites currently.
- Help oversee social media for the associations we serve.
- Serve as a second contact for association representatives that we serve.
- Assist with the Hampshire Happenings weekly email.
- Assist with long term planning for AHSA and ASR.
- Help develop new business for ASR.
- Assist with growing the AHSA.
- Handle financial responsibilities in the absence of the secretary.

Start Date: By June 1, 2019

For more information or to receive an application contact Jeff Ebert, AHSA Executive Secretary at 785-456-8500 or by email at asregistry@gmail.com.

- All juniors who meet the requirements for the Junior Show at the North American Livestock Exhibition are eligible to participate in the Futurity Ewe Lamb program. Rules for the NAILE are:
 - Not to be more than 21 years of age the date of the show in November, no lower age limit but junior member must be physically capable of showing his/her own sheep.
 - Junior member must be present to show their own sheep unless physically impaired. If the junior member is physically impaired, the junior member must still be present at the show that the futurity ewe lamb is being shown at and earning points from even if they are unable to show their own lamb in the show ring.
 - Animals purchased must be transferred through the AHSA office. The date of sale will reflect when the animal was purchased and must be prior to September 1st. No ewe lamb will be able to earn futurity points prior to being sold and transferred to the junior member or registered in the bred and owned division.
 - Current year paid membership in the American Hampshire Sheep Association is required. Membership must be paid prior to September 1st.
- Juniors are responsible to be knowledgeable of and abide by these rules.
- All lambs must be purchased and transferred directly to the youth and must be recorded in the AHSA office by the sale management or with a completed 2019 AHSA Ewe Lamb Futurity Nomination form. For the bred and owned division, the lamb must be bred by the immediate family or by the junior member. Immediate family is defined as grandparents, parents and siblings of the junior exhibitor. These lambs can remain in multiple juniors' names but only one junior can submit point forms on each individual lamb. If the lamb is transferred out of the youth's name it will NO LONGER be eligible. No partnerships, farm, family, 4-H club or FFA chapter names will be accepted. Also, the purchaser cannot be a family member or family member of an employee of the breeder of the lamb.
- Ownership of ewe lambs or points earned in the futurity are not transferrable to any other person other than the original owner, nor are the points transferable from one lamb to another.
- No futurity entrant may receive premiums for more than two ewe lambs. Total points earned by two ewe lambs cannot be combined to one lamb.

Consignor Rules:

- Entries are limited to fall and spring born ewe lambs.
- Nomination fee is \$25 per ewe lamb and payable to the AHSA. Fee will be paid to the AHSA office by the breeder of the lamb or the junior member who nominated their own lamb and must be submitted at the time of the transfer or registration of the lamb. **Breeder nomination fee of the entire 2019 lamb crop can be done by paying a one-time \$200 nomination fee.**
- Each ewe lamb must conform and abide by the rules and regulations of the individual sale (see below)
 - Ewe lambs sold in an online or production or by private treaty can be nominated for the 2019 AHSA ewe lamb futurity program by completing and submitting the 2019 AHSA ewe lamb futurity nomination form along with the nomination fee. Transfers must be completed within three weeks of the sale date.
 - Ewe lambs nominated at public auction managed by Heartland Group, Banner Sale Mgt, or any other recognized sale management, will be recorded by the sale management at the time of the show and designated with an F brand prior to the sale.
- The AHSA will not be held responsible for any dispute and or disagreements between buyers and sellers.
- Lambs will be permanently identified for futurity purposes and recorded by their individual scrapie tag number and/or flock tag number.

2019 Hampshire Ewe Lamb Futurity Point Record Form

I, (exhibitor name) _____ have shown the Hampshire ewe lamb (Breeder, flock tag #) _____, (scrapie tag #) _____ (AHSA Reg #) _____. The ewe lamb, which placed _____ in a class of (total head #) _____ (provide class name: Fall, Jan etc.) _____ ewe lambs, was shown in the (open or junior) _____ division of the following livestock show: (show name along with city, state) _____ on this date _____.

This ewe lamb is competing in the fitted division _____ or the slick shorn division _____.

This placing is verified by the superintendent of the above listed below.

Show Superintendent Printed Name: _____

Show Superintendent Signature: _____

Superintendent Contact Phone Number for Verification of Placing: _____

Please verify that the youth owning the lamb did physically show the lamb unless physically impaired. If physically impaired, please verify that the youth owning the lamb was present at the show.

Youth signature (owner of lamb) _____ Member # _____

Please make sure all blanks are completed when mailed to the AHSA office or the form will be invalid. Forms are required to be postmarked and mailed or faxed to the AHSA office by November 1, 2019.

American Hampshire Sheep Association
PO Box 231, 305 Lincoln St.
Wamego, KS 66547
Fax: 758.456.8599



SOUTH DAKOTA STATE UNIVERSITY

"Performance driven Hampshires with style!"



Pictured at 6 months of age
Wheaton 8-126 sired by Atlas and dammed by
Wheaton 5-118, daughter of Public Enemy.

We have 40 ewes bred to this stud ram!

Select offspring will be offered in our 9th
Annual SDSU Hampshire Sale May 1st, 2019!

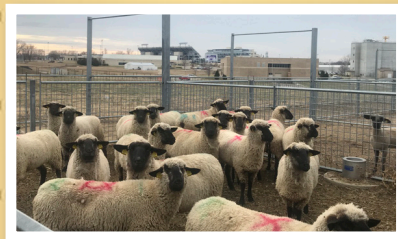
Lambing Time Open House
February 21st, 2019

All are welcome to attend!

Contact us for more information.

Come see his offspring this spring!

Visitors welcome Anytime!



Congratulations to
Kansas State University on their
purchase of this group of bred ewes!



Look for us at the
Watertown Winter Farm Show and Sale
February 9, 2019

Thank You to all of our buyers in 2018!
We look forward to what 2019 holds.

FOR MORE INFORMATION:

Karolynn Marsan - UNIT MANAGER - CELL 208-661-4587

Jeff Held - SUPERVISOR - CELL 605-690-7033

NSIP EBV'S AVAILABLE FOR ALL LAMBS.

BE SURE TO FOLLOW US ON FACEBOOK

FOR FLOCK UPDATES AND PHOTOS



Midwest Junior Preview Show

It's that time of year again! It's prep time for MJPS 2019!

When: Saturday June 1, 2019. Sheep can start arriving Thursday, May 30

Where: Missouri State Fairgrounds, Sedalia, MO

Check-In: All entries are due by 8 P.M. on Friday, May 31. Check-in can be done in person, over the phone, or by another exhibitor.

Entry: Online at www.midwestjuniorpreviewshow.com through May 15th or enter the day of (not guaranteed a t-shirt)

***Entries can be altered at any time, no payment is taken until you check in at the show.

Highlights for 2019:

- *OUR 9th ANNIVERSARY SHOW!
- *Friday evening Family Dinner in the show ring - It's FREE!
- *Friday evening activities - It's FREE!
- *Official Show T-shirt for all exhibitors - It's FREE!
- *Official Show Welcome Gift- It's FREE!
- *Showmanship classes, Supreme Drive, Parent/Child Jackpot Showmanship

What can you do to help?

Help us work towards our goal of \$17,000 for the 2019 show!

This show is solely funded by donations and all proceeds are given back to the exhibitors!

We appreciate ALL donations and would love your help!

If you would like to donate to help support the Midwest Junior Preview Show in 2019, please send donations to:

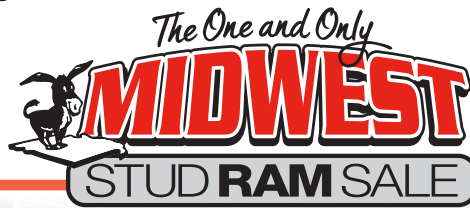
The American Hampshire Sheep Association
P.O. Box 231
Wamego, KS 66547

You can also fill out the form on our website

(<http://www.midwestjuniorpreviewshow.com/>) to donate!

Don't forget to like our page to stay up to date with this year's show! Like us on Facebook: Midwest Junior Preview Show

Gathering of Generations for a Timeless Tradition



2019 MIDWEST STUD RAM SALE SCHEDULE

Tentative as of 11/1/18, Subject to Change before Final Publication in Catalog

MONDAY – JUNE 24th

Sheep Barn (All Junior Shows)

- 9am - LeRoy Boyd Katahdin Junior Show
(all shows will immediately follow in order listed)
Judge for Junior Shows: TBA
Jim & Dorothy Handy Montadale Junior Show
National Texel Junior Show

TUESDAY – JUNE 25th

Sheep Barn

- 8am - Katahdin Show Judge: Brian Schermerhorn
(all shows will immediately follow in order listed)

NORTH RING

- Montadale Show Judge: John Mrozinski, Sr
Texel Show Judge: Tracey Dendinger
White Dorper/Dorper Show Judge: Tracey Dendinger

SOUTH RING

- Natural Colored Show Judge: Tor Sorenson
Rambouillet Show Judge: Tor Sorenson
Polypay Show Judge: Brian Schermerhorn
Corriedale Show Judge: Tor Sorenson
Columbia Show Judge: Tor Sorenson

Swine Barn

- 10am to 5pm - *NEW Weigh-in Stations Open for all WS/WD lambs
6pm - Hampshire Junior Show Judge: TBA

WEDNESDAY – JUNE 26th

Swine Barn

NORTH RING

- 8am - Shropshire Show Judge: Timothy Fleener
(all shows will immediately follow in order listed)
Southdown Show Judge: Timothy Fleener
Judge for all Wether Sires & Dams: Jimmy Davis
Dorset Wether Sire & Dam Show
Dorset Advantage Wether Sire & Dam Show
Speckle-Faced Wether Sire & Dam Show
Natural Colored Wether Sire & Dam Show

SOUTH RING

- 8am - Hampshire Show Judge: Greg Arehart
(all shows will immediately follow in order listed)
Suffolk Show Judge: John Mrozinski, Sr
Tunis Show Judge: Rick Klampe
Horned & Polled Dorset Show Judge: Rick Klampe

- 10am to 5pm - *NEW Weigh-in Stations Open for all WS/WD lambs

- 6pm - LARRY MEAD SUPREME CHAMPION EVENT
All-American Junior Show "Big Ticket" Benefit Auction
6:30pm - Sedalia Lamb Dinner, sponsored by PURINA

THURSDAY – JUNE 27th

Sheep Barn

- 8am - INTERNATIONAL Katahdin Sale
(all sales will immediately follow in order listed)
NATIONAL Montadale Sale
NATIONAL Texel Sale
Polypay Sale
White Dorper/Dorper Sale
NATIONAL Natural Colored Sale
Rambouillet Sale
Corriedale Sale
Columbia Sale

Swine Barn

- 8am - Club Lamb Show *(all shows will immediately follow in order listed)*
Judge for Club Lambs + all Wether Sires & Dams: Jimmy Davis
Hampshire Wether Sire & Dam Show
Suffolk Wether Sire & Dam Show
Crossbred Wether Sire & Dam Show
6pm - SUPREME CHAMPION WETHER SIRE & DAM SHOW

FRIDAY – JUNE 28th

Swine Barn

- 8am - NATIONAL Hampshire Sale
(all sales will immediately follow in order listed)
NATIONAL Suffolk Sale
NATIONAL Southdown Sale
Tunis Sale
Horned & Polled Dorset Sale
Shropshire Sale
NATIONAL Dorset Wether Sire & Dam Sale
NATIONAL Dorset Advantage Wether Sire & Dam Sale
Speckle-Faced Wether Sire & Dam Sale
Natural Colored Sire & Dam Sale

SATURDAY – JUNE 29th

- 8am - Club Lamb Sale
(all sales will immediately follow in order listed)
NATIONAL Hampshire Wether Sire & Dam Sale
NATIONAL Suffolk Wether Sire & Dam Sale
Crossbred Wether Sire & Dam Sale

www.midwestsale.com

Follow us:  Midwest Stud Ram Sale

American Hampshire Sheep Association

Application for Summer Internship

The below application is for individuals who are interested in applying to work as a summer intern for the American Hampshire Sheep Association. The approximate start date would be May 15th and approximate ending date would be August 1st. This is a paid internship and some travel might be required. Ideally, the successful applicant will work for 10-12 weeks and help with seasonal registry work and other duties of the AHSA office. Applications will be accepted until March 25, 2019. Phone interviews will be conducted prior to April 1st and the job offer will be made soon thereafter. The job location is at the AHSA office in Wamego, Kansas. Application and current resume can be emailed to asregistry@gmail.com or mailed to AHSA, PO Box 231, Wamego, KS 66547. If you have questions call Jeff Ebert at 785-456-8500.

Name: _____ Phone: _____

Address: _____

Email Address: _____ Year in School: _____

Give a brief background on your agriculture experiences, including with sheep and then specifically with Hampshires?

Why do you want to work as a summer intern for the American Hampshire Sheep Association?

What experiences do you hope to gain by serving the AHSA as a summer intern?

Do you have any extra talents that would assist the AHSA office (For example, livestock photography or design and layout of brochures?)

Would you be available to travel to shows and sales if needed by the AHSA secretary?

Do you have any potential summer conflicts during June or July, 2019?

What could be your earliest start date and latest end date if you were offered this position?

Please use additional pages as necessary.

2019 SCHOLARSHIP RECIPIENTS



Mitch Bobendrier is the son of Tom & Shelly Bobendrier from Pipestone, MN. He is currently a sophomore at the University of Minnesota majoring in Animal Science. At the University of Minnesota, Mitch has joined Block and Bridle, Ag Business Club, and is a member of Alpha Gamma Rho. He is currently a Co-chair for the sheep and goat showdown. Mitch has shown Hampshires for 13 years and has raised them for 12. He was also an AHSA Junior Ambassador from 2014-2016.

Holly Swearingen is currently a junior at University of Kansas where she is majoring in Psychology. She is the daughter of Rocky and Becky Swearingen and originally from Lawrence, KS. Holly has raised and shown Hampshires for 20 years. She has been a Weaver Livestock show camp instructor. In college, she is involved in the Behavioral Science Club and is a member of Phi Theta Kappa National Honors Society.



Andrew Bacon is the son of Eric & Sally Bacon from Brogue, PA. Currently, Andrew is a freshman at Penn State University where he is majoring in Food Science. He has raised and shown Hampshires for 10 years. In high school, Andrew was his 4-H Club's Vice President. Andrew says raising Hampshires has taught him interpersonal communication skills which have helped him build positive relationships both in and out of the sheep industry.

Becky Kron is currently a freshman at Xavier University. She has raised and shown Hampshires for 3 years. In high school she was her 4-H Club's President. More recently she is a member of Pre-Vet Club.



AMERICAN HAMPSHIRE SHEEP ASSOCIATION

PHOTO CONTEST

The American Hampshire Sheep Association is seeking outstanding high-resolution photos that showcase Hampshire sheep in their natural settings or youth with their Hampshires. The photos may be used as Heartbeat covers or for promotional displays and advertisements.

The AHSA will provide the following cash awards to the top five photos selected. The winners will be selected by an outside third party. These photos must be taken with a camera that allows for the reproduction of high-quality prints.

First	\$100
Second	\$75
Third	\$50
Fourth	\$40
Fifth	\$30

Winners will be featured in the spring issue of the Hampshire Heartbeat.

Image requirements:

High-resolution file vertical format works best for cover photos.

Include: Your name, phone number, email address and photo description.

Photo deadline: April 15, 2019

Send your photos to asregistry@gmail.com

If you have questions do not hesitate to call Jeff at 785-456-8500

American Hampshire Sheep Association

129th Annual Meeting

November 13, 2018

President Scott Van Sickle called the 129th annual meeting of the American Hampshire Sheep Association to order at 6:35pm.

Refreshments provided by the AHSA were enjoyed by 56 members and guests.

Tom Bobendrier moved and Julie Gatson seconded that the minutes of the 128th annual meeting be approved. Motion carried.

Richard Van Sickle moved and Phyllis Davison seconded that the financial report be approved as presented. Motion passed.

Jeff Ebert, executive secretary, updated those present on AHSA activities and office happenings.

Scott Van Sickle gave a president's report and talked about the Heartbeat, futurity, and photo contest among other items.

Katelyn Parsons gave an update on AJHSA activities.

The results of the Director elections were announced. District 1 - Dina King, District 5 - Ted Van Horn, District 7 - Scott Van Sickle, At Large - Tom Bobendrier.

Breeder of the year for 2018 was Jim Miller - Miller Hampshires

Futurity results were announced:

Fitted Purchased Division

Place	Name	Animal ID	Breeder
1	Tinleigh Spoonster, MO	Plaza Livestock 1398	Plaza Livestock, MO
2	Tinleigh Spoonster, MO	Herrig 1173	Herrig Family Hampshires, MN
3	Dylan Klug, WI	Rikow 8034	Rikow Hamps, WI
4	Mikara Anderson, PA	Cahoon 501	Cailey Cahoon, IL
5	Connley Hoagland, MT	Spoonster 18-018	Tinleigh Spoonster, MO
6	Grace Powell, TN	Pine Lawn Farm 8419	Pine Lawn Farm, MN
7	Kelsey Swonger, KS	Pine Lawn Farm 7754	Pine Lawn Farm, MN
8(tie)	Kelsey Swonger, KS	Golden Lane Farms 1734	Golden Lane Farm, MN
8(tie)	Ava O'Loughlin, OH	Double Bar D 1818	Double Bar D Hamps, OH
10	Brydon McKowen, TN	Klug HH17-15	Highland Hamps, IA

Fitted Raised Division

Place	Name	Animal ID	Breeder
1	Dylan Klug, WI	Klug 148	Dylan Klug, WI

Slick Shorn Purchased Division

Place	Name	Animal ID	Breeder
1	Morgan Hauger, IN	Poe 8094	Poe Hampshires, IN
2	Rachel Olver, PA	FCL 1802	Fleener Club Lambs, PA
3	Rachel Olver, PA	Fleener 1849	Fleener Hampshires, PA
4	Corbin Coyle, KY	Poe 8108	Poe Hampshires, IN
5	Campbell Coyle, KY	Poe 8014	Poe Hampshires, IN
6	Clark Coyle, KY	Poe 8171	Poe Hampshires, IN
7	Corbin Coyle, KY	Poe 8038	Poe Hampshires, IN
8	Clark Coyle, KY	Poe 8029	Poe Hampshires, IN
9	Hannah Schultz, WI	Metro 1845	Metro Hamps, WI
10	Cole Slark, WI	Rupnow 1314	Rupnow Hamps, WI

Slick Shorn Raised Division

Place	Name	Animal ID	Breeder
1	Ty Thorson, WI	Metro 1849	Metro Hamps, WI
2	Ty Thorson, WI	Metro 1824	Metro Hamps, WI
3	Morgan Hauger, IN	Hauger 0402	Morgan & Maddie Hauger, IN

President Van Sickle announced that the following individuals received AHSA scholarships: Andrew Bacon, Mitch Bobendrier, Becky Kron and Holly Swearingen.

The AJHSA auction was held. Maple Flavored Bacon donated by Gary Klug was purchased by Warren Finder for \$105. The Hampshire Heartbeat back page ad sold for \$1700 to Gillmore-Davison Hampshires.

Judy Moore moved and Skip Anderson seconded to adjourn the meeting. Motion Passed.

Respectfully Submitted by,
Jeff Ebert

**2019 AHSA Ewe Lamb Futurity Rules
& Point Record Form**
Sponsored by the American Hampshire Sheep Association

Point Scoring:

- A point records form must be filled out for each show and forwarded to the American Hampshire Sheep Association office by November 1, 2019. The form must be signed by the superintendent of the show who must also verify the youth owning the lamb did physically show the lamb unless physically impaired. If physically impaired, the junior member must still be present at the show even if they are unable to show their sheep in the show ring.
- At each individual show the ewe lamb may earn futurity points from both the open division show and/or the junior division show only if the shows are held at different times and judged by different judges. Only the junior show placing from the North American International Livestock Exposition will be counted. Futurity ewe lambs can only be shown in breeding class. The ewe lamb cannot be shown in market classes.
- Futurity ewe lambs may be shown at an unlimited number of shows and submit points from the shows shown in. Only the top 5-point forms submitted can be used toward the futurity final point totals.
- No designated show will be held before May 15th.
- Futurity awards will be announced during the annual meeting of the American Hampshire Sheep Association. Premiums will be mailed to the winners from the AHSA office after December 1st. Winners will also be posted on the AHSA website.
- Attached is the futurity point sliding scale from which points will be determined: (see information attached)
- There will be separate divisions for slick shorn and fitted ewe lambs. There will also be separate divisions for bred and owned slick shorn and fitted ewe lambs. An individual sheep can only participate in one division.

Premiums for Purchased Division:

A minimum of (\$2,000) will be awarded in premium in both the fitted and slick shorn divisions. The guaranteed money totals will be given as follows:

1 st - \$400 (20%)	6 th - \$175 (8.75%)
2 nd - \$300 (15%)	7 th - \$150 (7.5%)
3 rd - \$250 (12.5%)	8 th - \$15 (6.25%)
4 th - \$225 (11.25%)	9 th - \$100 (5%)
5 th - \$200 (10%)	10 th - \$75 (3.75%)

Premiums for Bred & Owned Division:

1 st - \$300 (30%)
2 nd - \$250 (25%)
3 rd - \$200 (20%)
4 th - \$150 (15%)
5 th - \$100 (10%)

In case of a tie, each animal that is part of the tie will receive the same amount.

Exhibitor Rules:

- Rules of exhibition shall be those published in respective premium books of each show. Ownership deadlines might vary from state to state. All ewe lambs must be nominated by Sept 1st.

INDEX TO HEARTBEAT ADVERTISERS

B					
BANNER	58	D	DOUBLE F CLUB	8	H
BOBENDRIER BOYS	INSIDE	LAMBS			HELD HAMPSHIRE
BOBENDRIER HAMPSHIRE	FRONT COVER	F	FINDER	9	HERRIG HAMPSHIRE
C		FLEENER CLUB	12		HOWELL CLUB LAMBS
CHAPIN HAMPS	13	LAMBS		K	
				KJELDGAARD HAMPSHIRE	46
				KLEINERT HAMPSHIRE	57

M	MUMM HAMPSHIRE	18
N	NELSON HAMPSHIRE	17
P	PETERSON SHEEP CO.	21
	PINE LAWN FARMS	7
R	RIKOW HAMPS	INSIDE BACK COVER
S	SOUTH DAKOTA STATE UNIVERSITY	45
	STORMS HAMPSHIRE	36

ATTENTION HAMPSHIRE BREEDERS!

<p style="text-align: center; background-color: black; color: white; padding: 5px;">Make plans now to attend these top upcoming sales!</p> <p>Entry forms for all our sales may be found on our website. ALL SALES FEATURE BOTH BREEDING HAMPS & WETHER SIRES & DAMS!</p>	<p style="text-align: center; background-color: black; color: white; padding: 5px;">ADVERTISE NOW!</p> <p style="text-align: center; font-size: 2em; font-weight: bold;">The Banner</p> <p style="font-size: 0.8em;">Join the nearly 3,000 PAID subscribers nationwide who keep up with the most CURRENT news offering in the industry!</p>
<div style="background-color: #0070C0; color: white; padding: 10px; text-align: center;"> <h3 style="margin: 0;">ILLINI ALL-BREEDS SPRING SALE</h3> <p style="font-size: 0.8em;">Entry Deadline Feb. 15!</p> <p style="font-weight: bold;">Friday & Saturday MARCH 29-30</p> <p style="font-size: 0.8em;">IL STATE FAIRGROUNDS • SPRINGFIELD, IL</p> </div>	<div style="background-color: #4B0082; color: white; padding: 10px; text-align: center;"> <h3 style="margin: 0;">MARYLAND SHEEP & WOOL FESTIVAL ALL-BREEDS SALE</h3> <p style="font-weight: bold;">HOWARD COUNTY FAIRGROUNDS WEST FRIENDSHIP, MD</p> <p style="font-weight: bold;">Entry Deadline March 10!</p> <p>SHOW: Friday, May 3 • 7:00 PM SALE: Saturday, May 4 • 6:00 PM</p> <p style="font-size: 0.8em;">Selling All Registered Breeds Of Sheep! Yearling Ewes - Fall Ewe Lambs - Spring Ewe Lambs - Rams</p> </div>
<div style="background-color: black; color: white; padding: 10px; text-align: center;"> <h2 style="margin: 0;">THE BIG OHIO SALE WEEKEND!</h2> <p style="font-size: 0.8em; color: red; border: 1px solid red; border-radius: 50%; padding: 2px;">EST. 800 HEAD TO SELL!</p> <h3 style="margin: 0;">EASTERN REGIONAL HAMPSHIRE SALE</h3> <p style="font-size: 0.8em;">Entry Deadline March 10!</p> <p style="font-size: 0.8em;">Thursday, Friday & Saturday MAY 9-11</p> <p style="font-size: 0.8em;">Preble County Fairgrounds EATON, OH</p> </div>	<div style="background-color: #00A651; color: white; padding: 10px; text-align: center;"> <h2 style="margin: 0;">GREAT LAKES SHOW & SALE</h2> <p style="font-size: 0.8em;">Entry Deadline March 15!</p> <p style="font-weight: bold;">WAYNE COUNTY FAIRGROUNDS • WOOSTER, OHIO</p> <p style="font-size: 0.8em;">SHOW: 9:00 A.M. FRIDAY SHEEP SALE: 10:00 A.M. SATURDAY</p> <h3 style="margin: 0;">MAY 25 MAY 26</h3> </div>

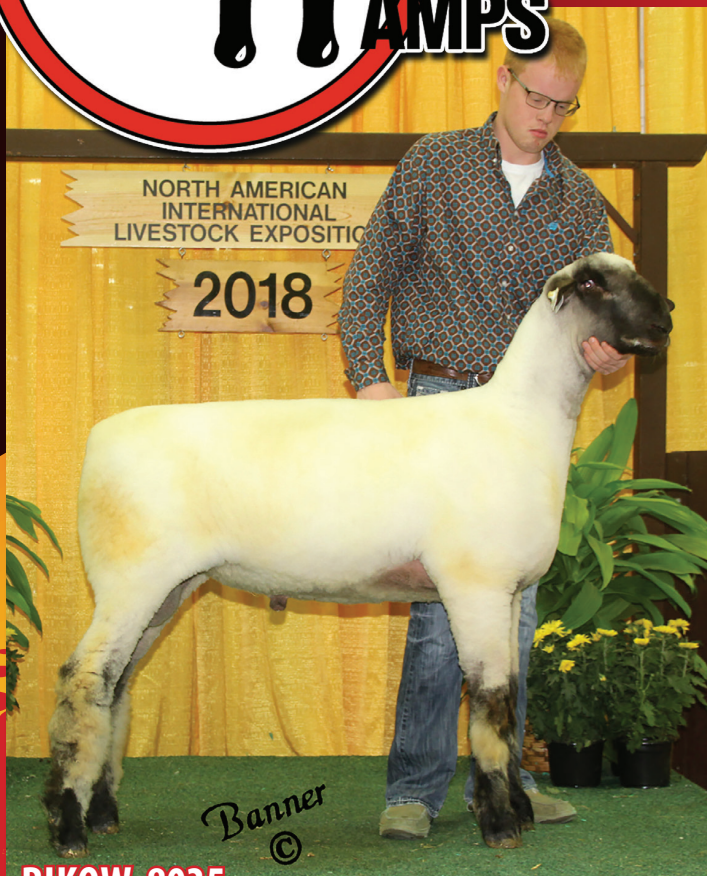
For information or free sale catalog, see us on the web or contact us at:

P.O. Box 500
Cuba, IL 61427
309/785-5058
Fax: 309/785-5050

Website: www.bannersheepmagazine.com • Email: sales.banner@sybertech.net



Full Steam into 2019!
Led by these exciting prospects...



RIKOW 8035
4th January Ram Lamb • 2018 NAILE
Sired by Rikow 6064 x Homeboy's Dam



RIKOW 8054
2nd March Ram Lamb • 2018 NAILE
Sired by Home Fire Son x Homeboy Daughter

Join Us!

FOR THE 5TH ANNUAL RIKOW HAMPS ONLINE SALE - APRIL 28, 2019

Offering a strong set of fall lambs, a set of stud caliber yearling ewes and a select group of February-born lambs.

All available on wlivestock.com. Give us a call to learn more!

We've added to our stud ewe battery! Purchased from the Tom Underwood flock of IA, these two ewes had an excellent showing in Louisville, standing 2nd in Class 1 and the fall ewe lamb won her class and was Res. Sr. Champion. These full sisters are Homeboy granddaughters, and we are excited about the impact they will make on our flock.

Rikow News!

RICHARD KRACKOW

ARCADIA, WI • RKDREALT@TRIWEST.NET • PH: 608.343.2899

WWW.RIKOWHAMP.COM

HAMPSHIRE HEARTBEAT
420A Lincoln, P.O. Box 231
Wamego, Kansas 66547

Change Service Requested

Gillmore - Davison Hampshires



*The Tradition Continues
Now in one location*

Tom Gillmore and Phyllis Davison
Beatrice, NE

Tom phone ~ 402-450-4398 ~ Phyllis 316-841-8223.
email: tgillmore.tg@gmail.com ~ phyldavison@gmail.com

