

HAMPSHIRE

Spring 2018

Heartbeat



SWEET SUMMERTIME



Bobendrier Hampshires

**Most of the Bobendrier
Hampshires Midwest
sale consignment will
come from this group
of females!**

**We are excited about the
strongest group of
Bobendrier Boys yearling
ewes we've raised.
Watch for some of these
select females in both shows
and sales throughout the
summer and fall!**



Bobendrier Boys

**Quality breeding stock always available, On the farm prices to fit anyone's budget,
Money back guarantee, "Spider" free, Honest birthdates, and at least one R!**

*Special thanks to those who either bid or purchased sheep
from us at the Big Ohio Sale or any online sales.*

Bobendrier Boys

1351 Highway 75
Pipestone, MN 56164
shebob8@gmail.com
507.215.0334

SOLUTIONS

*for
Success*

Bobendrier Hampshires

1607 90th Ave.
Pipestone, MN 56164
jcbobendrier@gmail.com
507.825.4072

Check our website, bobendrierhampshires.com for availability.

CONTENTS

- 4** **CALENDAR OF EVENTS**
A list of upcoming Hampshire events.
- 5** **PRESIDENT'S MESSAGE**
Updates from Scott VanSickle.
- 6** **MAY ONLINE SALE**
Information from the May 2018 Online Sale.
- 10-11** **GARY KLUG-SHEPHERD
FEATURE**
A feature on Gary Klug-Shepherd.
- 12-13** **ALL-AMERICAN 25TH
ANNIVERSARY**
Details on the 2018 All-American Anniversary in Indianapolis.
- 18-19** **ENDRE FINK & FAMILY
FEATURE**
A feature on Endre Fink and his family.
- 22** **NEW SENIOR MEMBERS**
Senior members recently joining the AHSA
- 24** **NORTHEAST YOUTH SHEEP
SHOW**
Details for the 24th Northeast Youth Sheep show.
- 26** **AHSA SCHOLARSHIP PROGRAM**
Form & information for the 2018 Scholarship Program.
- 29** **IMPROVEMENT PROGRAM SALE**
Information for the National Sheep Improvement Program Sale.
- 30-31** **YOUTH CONNECTION**
Nutritional requirements for sheep information.
- 33** **OHIO SALE RESULTS**
Pictures of the champions.
- 34-36** **AHSA EWE LAMB
FUTURITY RULES**
Rules & point record form for the 2018 AHSA Ewe Lamb Futurity.
- 38-39** **STATE HAMPSHIRE ASSOCIATIONS**
Contact Information for all State Hampshire Associations.
- 41** **UPCOMING SALES**
Information for National Hampshire Sale and National Hampshire Wether Sire Sale.
- 42-56** **MEMBERSHIP DIRECTORY**
Includes all 2018 AHSA members.
- 59** **HERITAGE HONORS**
Form for the Hampshire Heritage Honors Recognition Award
- 60** **HAMPSHIRE IN 1998**
A look back at Hampshires in 1998
- 61-63** **AJHSA AMBASSADORS**
Form for junior members for the AJHSA Ambassador Program

Calendar of Events

JUNE

25-30 Midwest Stud Ram Sale - National
Hampshire Sale, Sedalia, MO

JULY

5-8 All American Junior Show, Indianapolis, IN

19-22 Northeast Youth Sheep Show,
West Springfield, MA

28 Center of the Nation NSIP Sale Spencer, IA

AUGUST

11 Eastern NSIP Sale, Wooster, OH

SEPTEMBER

15 Deadline for submission of bios for AHSA
Board of Directors

20 Ad deadline for Fall Hampshire Heartbeat

30 Deadline for submission of AJHSA Board of
Director applications

OCTOBER

1 AHSA Scholarship deadline

15 Hampshire Heritage application deadline

NOVEMBER

8-15 North American International Livestock
Exposition, Louisville, KY

IF YOU WOULD LIKE TO HAVE YOUR SHOW
OR SALE LISTED IN OUR CALENDAR OF
EVENTS AND ON THE HAMPSHIRE
WEBSITE, PLEASE EMAIL US THE
INFORMATION. FOR SALES TO BE LISTED
YOU MUST BE SELLING REGISTERED
HAMPSHIRE.

Official Publication of the American Hampshire Sheep Association

PO Box 231, 305 Lincoln
Wamego, Kansas 66547

Ph: 785-456-8500 Fax: 785-456-8599

asregistry@gmail.com • www.hampshires.org

EXECUTIVE SECRETARY: Jeff Ebert

ASSOCIATED REGISTRY STAFF: Joelle Sylvester, Janette Fund,

Morgan Huelsman, Kim Baker & Mackenzie Padgett (intern)

AHSA Board of Directors

President: Scott VanSickle

Vice President: Brent Larson

DISTRICT 1 - Lisa Hanson, OR

(503) 881-6550 - alekhanson@live.com

3rd term expires 2018

DISTRICT 2 - Jason Simpson, CO

(970) 371-0276 - jsimponcl@aol.com

2nd term expires 2020

DISTRICT 3 - Randy Pirtle, OK

(918) 440-4553 - randy.pirtle@okstate.edu

3rd term expires 2019

DISTRICT 4 - Brent Larson, SD

(605) 633-1561 - larsonb76@gmail.com

2nd term expires 2019

DISTRICT 5 - Phyllis Davison, KS

(316) 841-8223 - phylldavison@gmail.com

3rd term expires 2018

DISTRICT 6 - Debbie Deal, OH -

(330) 607-1347 - ddeal1957@aol.com

3rd term expires 2020

DISTRICT 7 - Scott Van Sickle, KY

(270) 792-7173 - vansickleantiquityridgefarm@gmail.com

2nd term expires 2018

DISTRICT 8 - Katelyn Parsons

(413) 387-2726 - katelyn@mfbf.net

1st term expires 2019

AT-LARGE - Tom Bobendrier, MN

(507) 215-0334 - shebob@svtv.com

2nd term expires 2018

AT-LARGE - Derick Miller, TX

(806) 239-3670 - millerpecanfarms@gmail.com

2nd term expires 2019

AT-LARGE - Jason Mumm, IL

(217) 377-2073 - meganmumm@hotmail.com

1st term expires 2020

Office Fee Schedule

A. MEMBERSHIPS

1. New Senior Membership	_____	\$25
2. Annual Senior Dues	_____	\$25
3. New Junior Membership	_____	\$15
4. Junior Dues	_____	\$15

B. REGISTRATIONS

Postmarked Sept 1 - April 30

1. Animals under 12 months	_____	\$4
2. Animals over 12 months	_____	\$8

Postmarked May 1 - August 31

1. Animals under 12 months	_____	\$6
2. Animals over 12 months	_____	\$12

C. TRANSFERS

1. Under 90 Days (from date of sale)	_____	\$10
2. Over 90 Days (from date of sale)	_____	\$20

D. DUPLICATE CERTIFICATE

_____	\$5
-------	-----

E. RUSH FEE (PER TRANSACTION)

_____	\$5
-------	-----

Greetings from your President

Hampshire Breeders and Members,

You will worry yourself to death in a dry year, but you'll go broke in a wet year. This nugget comes from one of the farmers that I work with in my day job as an agronomist. The farmer, with more years farming than I have lived on this earth, is full of wisdom. His point being, as being proved out this spring, is that when it rains incessantly, you can never get things done in the field, therefore this extreme can potentially lead to financial ruin.

But the AHSA is working hard to help registered Hampshire breeders add profit to the bottom line. One way that we do this is by hosting several sales throughout the year. The first online sale of the season was another success. Anyone can participate with their registered Hamps, slick or fitted. We have another sale coming up in June, maybe as you are reading this article. If you haven't participated in the past, I would recommend that you give it a try to market your quality consignments. Tentatively, the board is planning on having two more online sales next year, giving our members another avenue to market their animals.

Speaking of sales, the board recently discussed the future of the Stars of Louisville sale. This sale was brought back out of retirement several years ago to give another avenue for buyers and sellers to come together and trade on quality animals. We are looking for more consignments, so if you have consigned in the past or if you're a regular at Louisville and haven't consigned yet, this is the year. We are working to keep costs down and hope that folks that would be traveling to Louisville for the show would have another reason to attend.

And as it comes to travel, Sedalia is right around the corner. This year we are trying something new, a junior show in Sedalia. It will be held Tuesday, June 26th at 6 pm. We have classes set up for slick and fitted ewe lambs and yearling ewes, as well as showmanship, with entry forms on the AHSA website. The board has set aside \$1500 that will be used as premiums, in the form of buyer credits. For example, if a junior wins \$100, they can then buy a registered Hampshire later in the week for \$500 and only owe \$400. The credit has to be used this year, at the MWSRS and must be registered in the junior's name. We are continually striving to find ways to engage and grow the Hampshire youth program. Junior members have several different ways to become involved and hopefully this is another opportunity that our youth will find beneficial.

An opportunity for all members is the online registration and database search which was added to the AHSA website on May 21. The format for both is fairly easy, so go take a look. The online database is essentially the flock book online. We are working to make our website invaluable to our most important clients, you the members.

Finally, I am always eager to hear from each of you as we look for the next idea to move our association forward. I had an opportunity to speak to several of you at Eaton and hope to visit with more folks in Sedalia. Maybe by then our constant rains will subside. As that ol' Kentucky farmer says, one extreme follows another.

Have a safe summer,

Scott VanSickle

ADVERTISING IN THE HEARTBEAT

****Printed three times a year****

WINTER ♦ SPRING ♦ FALL

You can choose to run an individual ad in a single issue of your choice, or choose a three-issue contract. Contract ads will be placed in three consecutive issues of the Hampshire Heartbeat. Contracts begin with the next available issue and run through the next two consecutive issues. Either an individual ad or a contract can be purchased at any time throughout the year. Prices for both types are listed below or advertises who provide ads ready for publication will receive a 15% discount on the listed prices. You may find more information at www.hampshires.org.

DEADLINES

Winter Issue: January 15th

Spring Issue: May 1st

Fall Issue: September 15th

Ad size or Placement	Single Issue Price	Three Issue Contract Price
Inside Covers	\$450.....	\$900
2-Page Spread.....	\$550.....	\$1100
Full Page	\$350.....	\$700
3/4 Page	\$300.....	\$600
2/3 Page	\$275.....	\$550
1/2 Page	\$250.....	\$500
1/3 Page	\$210.....	\$420
1/4 Page	\$165.....	\$330
1/6 Page	\$125.....	\$250
1/8 Page	\$100.....	\$200

AHSA MAY 18 ONLINE SALE

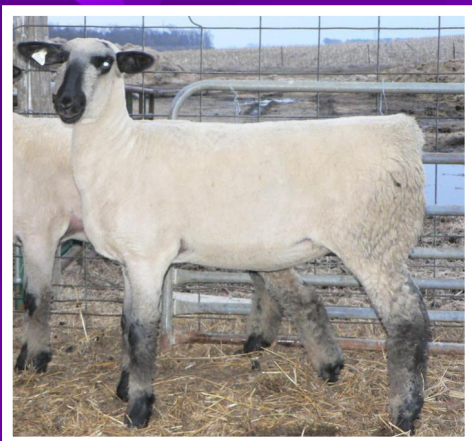
LOT #	BREEDER	PRICE	BUYER
1	FOLDING HILLS HAMPSHIRE	\$600	KATELYN PARSONS - ASH, MA
2	KING DIAMOND RANCH	\$500	BLAIR SUMMEY - LINCOLN, CA
4	BOBENDRIER BOYS	\$700	LILA MAHER - COLFAX, IA
5	JUSTIN LARSEN	\$550	NATHAN ROBBINS - LAMOURE, ND
7	BOBENDRIER BOYS	\$650	BLAIR SUMMEY - LINCOLN, CA
8	FOLDING HILLS HAMPSHIRE	\$600	WADE PEARSON - WILLIAMSBURG, PA
9	L&L HAMPSHIRE	\$500	BLAIR SUMMEY - LINCOLN, CA
10	BOBENDRIER HAMPSHIRE	\$750	LLOYD ARTHUR - GREENFIELD, IN
11	BOBENDRIER HAMPSHIRE	\$1,000	MATHEW PINCKNEY - AUBURN, NY
12	HELD'S HAMPSHIRE	\$1,700	JENNA SULLIVAN - MOODUS, CT
13	BOBENDRIER HAMPSHIRE	\$750	JOSHUA KIRCHENBAUER - CLEAR LAKE, MN
14	AUSTIN SCHIEFELBEIN	\$1,600	JENNA SULLIVAN - MOODUS, CT
15	ALLF HAMPSHIRE	\$600	GORDON KERANEN - FRAZEE, MN
17	L&L HAMPSHIRE	\$1,300	BRUCE BAKKEN - HARTLAND, MN
20	ALF HAMPSHIRE	\$400	WILLIAM FULTON - KELL, IL

723

HIGH SELLING RAM FROM
L&L HAMPSHIRE
THAT SOLD TO BRUCE BAKKEN.

HELD 17-1965

HIGH SELLING HAMPSHIRE AT
\$1700 FROM HELD'S
HAMPSHIRE SELLING TO
JENNA SULLIVAN.



1802

SECOND HIGH SELLING
EWE FROM AUSTIN
SCHIEFELBEIN SELLING TO
JENNA SULLIVAN.



Highland Hampshires

We're Stacking The Deck For Our Trip To The "Show Me State"



"Jane Russell"

Klug HH 17-213T NNP QR - 03/04/17

Sire: Bobendrier Boys 15-50 RR "Derby"

Dam: Klug HH 14-97T

"Rosiland Russel"

Klug HH 17-201T NNP RR - 01/29/17

Sire: Bobendrier Boys 15-50 RR "Derby"

Dam: Klug HH 14-110T



"Mr. Midwest Stud"

Klug HH 16-105P NNP RR - 9/14/17

Sire: Bobendrier Boys 15-50 RR "Derby"

Dam: Mercedes Ladies 13-03 "M" RR



Stop by our pens at the 2018 Midwest Stud Ram Sale to see our full set of consignments:

5 Hampshire and 2 Southdown Entries:

*** Hampshire: 2 Yearling Ewes, Fall Buck lamb, February Buck lamb, February Ewe lamb**

***Southdown: 2 Fall Buck lambs**

Gary T. Klug
939 Hazel Rd. Harlan, IA 51537
(712)202-4461
klughihamp@tm.net



Dylan R. Klug
1033 1st Ave. Grafton, WI
dklug2001@gmail.com

CHAPIN HAMPS

Bill & Carole, Derek, Laura & Clive
Coal City, IL 60416

(815) 954-5129 chapinhamps@gmail.com

Sound, Honest, Consistent
Hampshire Sheep

Size, Thickness, Bone & Beauty

“Easy Keepers” that will work in any flock –
especially YOURS!

MISSED OPPROTUNITIES

Due to a truck fire, these two yearling ewes
and two fall rams didn't make it to the Eaton
sale. They are waiting for you on the
peaceful pastures of Illinois and ready for
an adventure in your flock!



Yearling Ewe #639, 2/16/17, RR



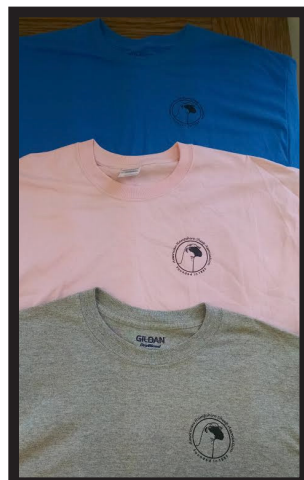
Yearling Ewe #643, 2/24/17, QR



Fall Ram #192, 11/2/17, QR



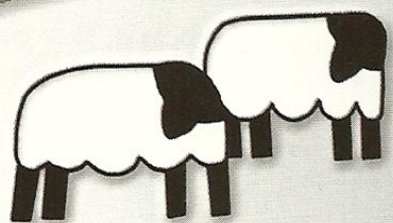
Fall Ram #194, 10/16/17, RR



HAMPSHIRE PROMOTIONAL ITEMS AVAILABLE FOR PURCHASE

The American Hampshire Sheep Association has several items for sale to help promote Hampshires. We currently have t-shirts, hats and hoodies in stock in various sizes and colors. We will have a limited supply of each available in Louisville during the North American for purchase. T-shirts and hats are \$10 each and the hoodies are \$30. These items make excellent Christmas or birthday gifts for the Hampshire sheep lover in your family. If you would like to order these items you can use the work order and fee schedule to submit your order by mail, or you can call us at 785-456-8500.

We also have Hampshire flockbooks for sale. These are published annually and contain all Hampshires that were registered and transferred in a calendar year. These are \$50 each. We have some copies available for past years, so please specify the year when ordering.



Ketcham's



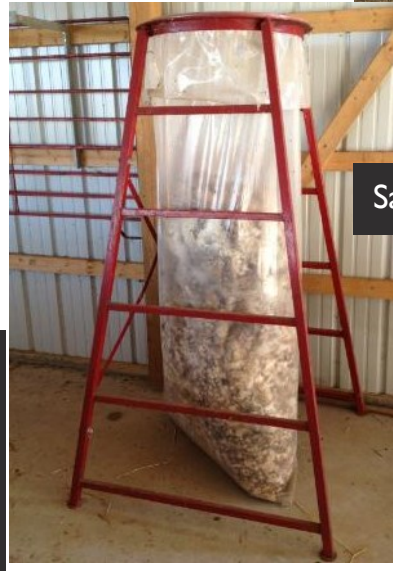
Visit our website for current prices, promotions, and to request a **FREE** catalog!



Phone # 618.656.5388



LIFETIME WARRANTY on all trimming stands and our mineral feeder!



Satisfaction guaranteed on our Tilt Table!



See why so many producers recommend Ketcham's—superior quality equipment designed and manufactured in Edwardsville, IL USA. Call ahead to have equipment orders delivered to the shows we attend throughout the year to save on shipping. Check our show schedule out on our website!

www.ketchamssheepequipment.com

FEATURING GARY KLUG-SHEPHERD



INTRODUCE YOURSELF & YOUR FAMILY

Hello from the Klug Family! I am Gary Klug-shepherd of Highland Hampshires. We've had registered Hampshires since 1972. In the early years it was a family project-my brothers and sister all showed at county and state level. Sister Carol and I continued after the 4-H years-her daughter Lynn, came of age in the 90's and active today and my youngest brother's son, Dylan started with sheep in 2007. So, Dylan, Lynn and myself are the active family members today.

GIVE US A BRIEF DESCRIPTION OF YOUR HAMPSHIRE FLOCK

Currently, about 35 brood ewes-with equal number of young stock. 70's/80's we used Roembke, Finder and a Pullin buck on basically, ewes I had bought from Richard Roembke. Ewes I bought were rich in Hogg, Hubbard and Canterbury breeding. Early 90's we made a decision try and be competitive on a larger footprint. Rams we bought were from Held and Bobendrier to effect size. Over the years, we've added at least one ewe to the flock annually-the Futurity program has been good excuse to do so! A ewe we purchased in 1998-from Schlichter Hampshires had a big impact-and she still does today. A ram I bought from Jill Alf-a Good fellow son 'Sterling' in 2003, has had a big influence- continuing to this day.

WHY DID YOU CHOOSE TO INCLUDE REGISTERED HAMPSHRIES IN YOUR SHEEP OPERATION?

Richard Roembke was a relative and a close resource and 4-H friends of mine-Pete and Bill Fish were a big influence, also. I think I really, just 'liked' the look!

WHAT IS THE FAVORITE PLACE YOU HAVE VISITED?

Northern CA

WHAT ADVICE DO YOU HAVE FOR PEOPLE STARTING OUT IN THE SHEEP BUSINESS?

Decide what type of sheep you like-and raise them! You are the one that has to look at them daily and hopefully, your success and contentment, in achieving your goals, will bouy you up in times of 'barn drama', cause we all go through those tough times.

WHAT ARE ONE OR TWO ITEMS THAT YOU HAVE FOUND TO BE CRITICAL FOR THE SUCCESS OF YOUR SHEEP OPERATION?

Planning ahead-365 days-what you do today, will affect you eventually...whether it's a feed change or culling ewes-one takes time and the other sets a new course. Critical for success? Being critical of your sheep! We can all get barn blind at times but when you make allowances-be prepared to live with them. Evaluating livestock is about placing values on confirmation and performance and then prioritizing them according to one's philosophy.

WHO ARE SOME PEOPLE THAT YOU CREDIT FOR YOUR SUCCESS WITH HAMPSHIRE?

Early on it was my parents and The Roembke's for being supportive in my endeavor. Over the years I would say it's the people I've met through the breed, shows and sales. The 'Midwest' gang has been supportive and a resource over the years. I always have said, showing sheep has been like taking mini-vacations with the same people every August-same venues/same cities.

WHAT IS YOUR FAVORITE SPORTS TEAM?

When I lived in Milwaukee-it was the Brewers...when I lived in Green Bay-it was the Packers.... now that I live in Western Iowa..choices are limited professionally, so its either Hawkeyes or Huskers....The Huskers are much more entertaining(in a freudenschade way..) and I like the football tailgates.

WHAT IS THE TOP ITEM ON YOUR BUCKET LIST?

Extended train trip through Europe- including the Baltic/Slavek countries.

WHAT IS YOUR FAVORITE FOOD?

Thin crust pizza



2018 ALL-AMERICAN CELEBRATING ITS

The 2018 All-American Junior Sheep Show is going to be held at the Indiana State Fairgrounds, Indianapolis, IN from July 6-8, 2018. This will be the 25th Anniversary Show and we are going back to the state where it all started all those many years ago. The All-American is the premier and largest junior breeding sheep show in the country. The breeds participating this year are: Polled Dorsets, Horned Dorsets, Dorset Advantage, Hampshires, Southdowns, Border Leicesters, Cheviots, Shropshires, Oxfords, Montadales, Romneys, Shetlands, Lincolns, Natural Coloreds, Tunis Dorpers, Columbias, Corriedales, Katahdins, Merinos and Targhees. Rambouillets are coming back this year for the show. Several meat breeds will feature slick shorn classes at the All-American and several wool breeds will be highlighted once again this year. Judges for this year's event will be Rich Jacobsen, CA; Eric Burns, OH; and Tor Sorenson, AZ.

If you have never attended an All-American Junior Show please make plans to attend this very special event! It is much more than just a sheep show, as there are several activities for the whole family. The show features a lamb camp for the young sheep owners, a 3-on-3 basketball tourney for the exhibitors, a sheep skill-a-thon competition with several participation awards being sponsored, a sheep judging contest, free pizza and BBQ dinners for exhibitors that also features an adult age photo division, a college scholarship program for older exhibitors, a thank-you note writing booth where participation awards are given away, a new virtual shearing fun contest, and much more!

The National Junior Suffolk Show is going to be held close by at a county fairground so they have invited All American exhibitors once again this year to be involved in a couple of special events. The highlight of these special activities will be a Tod Weaver Memorial Fiting Contest on Thursday, July 5th at 6:00 PM. The National Junior Suffolk Junior Association is hosting this special event for the exhibitors of both junior shows. There will be two age divisions and awards in each division. They are also inviting exhibitors to participate in their Dress A Sheep and Leadline events that are held on Friday, July 6. Look for more information by going directly to the United Suffolk Sheep Association Web Site.

On Friday night, July 6, there will be the ever popular 3 on 3 basketball tourney and the Harry & Mary Blome pizza party sponsored by Sink Southdowns & Horned Dorset & Padgett Kids and the Dave Trotter Family. On Saturday night, July 7, there will be a free BBQ for all of our show's attendees along with some fun activities. Come and enjoy the family fun!

Complimentary exhibitor & family breakfast will be served on Saturday & Sunday mornings sponsored by Willoughby Livestock Sales and Reproduction Specialty Group. There will also be an Indiana Pie Social on Friday at noon sponsored by Wick's Pies. Thank you to these folks for sponsoring these food events for our exhibitors!

Honor Show Chows has become a major show sponsor and will be back with us in Indiana. Weaver Leather is also a major show sponsor providing embroidered wether blankets for the champion and reserve champions market lambs as well as a hanging show box for our new junior raffle ticket selling incentive program. Weaver will also be providing a welcome gift for each exhibitor family. To encourage more raffle ticket sales, which is a major fundraising activity for the All American, the AJSS will be offering a logoed hanging show box to the top junior ticket seller. We will also be offering gift certificates to the other top four salesmen for AAJS apparel you can get show weekend. Kalmbach Feeds and Kalmbach "Formula of Champions" Show Feeds joined the All American as a major show sponsor a couple of years ago and will be back on board in 2018. Sydell has generously donated the hydraulic trimming stand for the All-American Raffle fundraiser. Tractor Supply will be providing prizes for the ever-popular exhibitor thank-you booth and the American Lamb Board will be donating some of the thank-you notes for the booth. Mid States Wool Growers will be donating the halters once again for lamb camp and Bass Pro Shop, Clarksville, IN will be donating the draw-string backpacks for the lamb campers. Ketcham Sheep Equipment will also be providing savings coupons to all of the All American Junior Show exhibitors at the show.

25th ANNIVERSARY IN INDIANAPOLIS

With the show being in Indiana this year, the Indiana State Department of Agriculture has awarded a major grant to the All American to help cover the cost of the facility rental. Without their support it would not be possible to have the event at this great facility. Other Indiana groups that will also be helping out to sponsor the show are the Indiana Sheep Association and the Indiana Sheep & Wool Development Council. Thank you to all of these groups for their support!

At the Midwest Stud Ram Sale, Sedalia, MO during the Supreme Champion Show on Wednesday, June 27, the AAJS Benefit Auction will be held and this year we will be auctioning off some very exceptional items! Novel Designs has donated a ChampionDrive.com Home Page Announcement; Ketcham Sheep Equipment has donated an A-line feeder; Willoughby Livestock Sales has donated a commission free online sale, Reproductive Specialty Group has donated an ET flush and transfer surgery and 5 LAI surgeries, Pro-Va-do Shears has donated a set of their cordless electric shears and B & D Genetics and Delta Livestock Diagnostics has donated genetic testing and LAI surgeries. Specifics and details on all item can be found on the AAJS web site. Thank you to Heartland Group for allowing us to do this special benefit at the sale as this has become a major fundraiser for the show. Please be on hand or contact the AAJS show committee to bid on these special items!

At the Big Ohio Sales, Eaton, OH in May, Banner Publications has donated on one-page color ad in "The Banner" that was auctioned off also benefiting the All-American. A BIG THANK-YOU to all of these sponsors and donators as without their assistance this show would not be possible! Our Indiana host committee is being organized by Lynn & Kellie Kuhn, Dave & Deb Trotter, Steve & Sheila Sink and other fellow Indiana sheep breeders. A big thank-you also goes to all of the Indiana sheep families involved in the local planning committee. Several Local sheep breeders and youth supporters have stepped up to the plate to organize events and volunteer to help out. It is thanks to all of you that this show will be a special All American for our junior sheep exhibitors and their families.

Room blocks have been reserved at the following area hotels:

-Marriott Indianapolis East (60 room block)

7202 East 21st Street

Indianapolis, IN 46219

(317) 352-1231 Toll Free: 800-991-3346

Standard Rooms at \$116.00 (non-smoking, double queens)

Group Name: All American Junior Sheep Show, cutoff date for group rate 6/4/2018

-Delta Hotels-Marriott (60 room block)

7304 East 21st Street

Indianapolis, IN 46219

(317) 359-1021

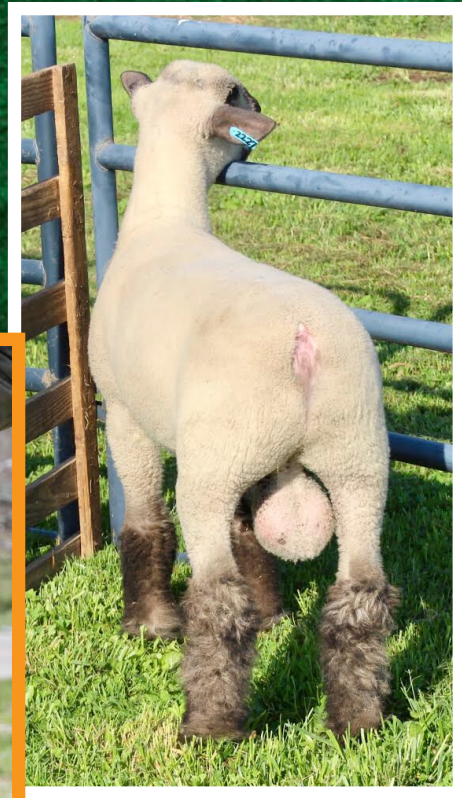
Standard Rooms at \$106.00 (non-smoking, double queens)

Group Name: All American Junior Sheep Show, cutoff date for group rate 6/4/2018

Camping is available on the Indiana Fairgrounds 200 total sites with 80 sites with full seasonal hook-ups (water, electricity and sewer) and 90 sites using electricity or water. Rates are \$30/ night. Any sites using no hook-ups are \$20.00 per night. No reservations needed, upon arrival at the campground call the phone number posted on the site and IN Fair Staff will come and check you in. Dormitory space is also available. Up to 120 people can stay in the rooms using bunk beds in the Dormitory Space upstairs of the Champions Pavilion and Blue Ribbon Pavilion. Cost is \$30 per person/night, bunk beds and showers available. Check in will be at the AAJS Show office, no reservations needed.

Entries closed May 25th, 2018. However, you can still enter with a higher entry fee for any late entries submitted after the deadline date and post entries at the show. Check out the All-American Website: www.allamericanjuniorshow.com for entry and further information.

SEDALIA CONSIGNMENTS



**Federal x
Grizz Buck Lamb**

**Select Group of
Fake News &
Federal Ewe Lambs**



Double F Club Lambs

Endre, Betsy, Stefan & Allison Fink
1590 Boonesboro RD Winchester KY 40391
Stefan 859-771-8441 | **Endre** 859-559-7765
doubleflamb@gmail.com
www.doublefclublambs.com



HELD AT WLIVESTOCK.COM
BRED EWE SALE



**Online Bred
Ewe Sale
October 21 @
Willoughby
Sales.**

**Yearling Ewes
Sired by Senator**



"See the Sheep, See the People, See the Sale!"

The One and Only
MIDWEST
STUD RAM SALE

North America's Largest & Greatest Sheep Sale!

**Don't Miss the
Hampshire Excitement!**



Wednesday, June 27th ~
HAMPSHIRE SHOW
Judge: Steve Reid
Friday, June 29th ~
NATIONAL HAMPSHIRE SALE



SUPREME CHAMPION HAMPSHIRE EWE

This Hampshire Yearling Ewe was consigned by Mumm Hampshires of Illinois. Birschbach Hampshires of Wisconsin purchased her for \$4,400.

Again this year...

All Shows & Sales Live Streamed:

www.dvauction.com

*Pictured are
2017
Champions at Sedalia!*



SEDALIA
MISSOURI STATE FAIRGROUNDS

JUNE 25-30

Miss the April 20th Entry Deadline?

No Problem! ... We'll accept entries up through the day of the show, but they will not be included in the printed or online catalog.

Online Searchable Catalog and Full Print Catalog PDF Available Late May at:
www.midwestsale.com



**SUPREME CHAMPION HAMPSHIRE
WETHER DAM**

This Hampshire Yearling Ewe was consigned by Harrell Club Lambs of Oklahoma. She sold for \$38,000 to Justin Nathan, Jason Simpson, and Wade Franklin of Nebraska.

Thursday, June 28th ~
**HAMPSHIRE WETHER
SIRE & DAM SHOW**
Judge: Marvin Ensor

Saturday, June 30th ~
**NATIONAL HAMPSHIRE
WETHER SIRE & DAM SALE**

Sale Managed by

Heartland
LIVESTOCK SERVICES, LLC
PO Box 72 - Milo, IA 50166

Find Complete Schedule for All Events & Times Online:

www.midwestsale.com

(515) 442-0950 • info@midwestsale.com



Follow us:
 Midwest Stud
Ram Sale

OHIO SALE RESULTS

Champion Hampshire Ram shown by
Plaza Livestock, Missouri



Champion Hampshire Ewe was shown
by Hickman Hampshires, Washington



Champion Hampshire Wether Sire
shown by Daniels Club Lambs, Indiana



Champion Hampshire Wether Dam
shown by Danny Knapke, Ohio



Reserve Champion Hampshire Ram
shown by Marshall Sheep Company,
South Dakota



Reserve Champion Hampshire Ewe
shown by Plaza Livestock, Missouri



FEATURING ENDRE FINK & FAMILY

INTRODUCE YOURSELF & YOUR FAMILY

We are Endre, Betsy, Stefan and Allison Fink. Endre works at the University of Kentucky in the Animal Science Dept. as the Sheep Unit Manager and Betsy also works at UK as a Research Associate in the Dept. of Plastic Surgery Research. Stefan graduated from UK in 2016 with Ag Economics & Management degrees and is a Regulatory Analyst at a local natural gas distribution company. Allison just finished up her freshman year at UK and is majoring in Animal Science and Ag Biotechnology.



GIVE US A BRIEF DESCRIPTION OF YOUR HAMPSHIRE FLOCK

Currently our flock consist of 40 registered Hampshire ewes and 25 white commercial ewes we are using for recips in our ET program. The flock was started in 1992 by Endre and James Albert Farris (Betsy's brother) with the main purpose of raising club lambs for their kids to show in 4-H.

WHY DID YOU CHOOSE TO INCLUDE REGISTERED HAMPSHRIES IN YOUR SHEEP OPERATION?

We did really well with a pair of Hampshire ewe lambs when our kids started in 4H so we decided to stick with that breed.

WHAT ADVICE DO YOU HAVE FOR PEOPLE STARTING OUT IN THE SHEEP BUSINESS?

Start by doing a lot of research on the breed and developing a good relationship with breeders that are willing to help you get started.

WHAT IS THE FAVORITE PLACE YOU HAVE VISITED?

Disney



WHAT ARE ONE OR TWO ITEMS THAT YOU HAVE FOUND TO BE CRITICAL FOR THE SUCCESS OF YOUR SHEEP OPERATION?

I think that we have been successful because we have always maintained a very uniform set of females. We take a lot of pride in the fact that over the years we have only bought a handful of females.

WHO ARE SOME PEOPLE THAT YOU CREDIT FOR YOUR SUCCESS WITH HAMPSHIRE?

I owe a lot Winston Deweese, long time shepherd at the University of Kentucky. He was a huge help when we first got started.

WHAT IS YOUR FAVORITE SPORTS TEAM?

UK Wildcats! Go Big Blue!

WHAT IS YOUR FAVORITE FOOD?

Lamb Brats

WHAT IS THE TOP ITEM ON YOUR BUCKET LIST?

Alaska Trip



Hampshire Scenes



Mumm Hampshires

**Champion Ewe
2015 National Sale**



**Wait to see
what we are
bringing this year!**

**Res Champion Ewe 2016
National Sale**



**Supreme Champion Ewe 2017
Midwest Stud Ram Sale**



**Jason, Megan, Beau, Luke &
Emmalou Mumm**

49 CR 1300 North - White Heath, IL 61884
Jason Cell: 217-377-2073 - Megan Cell: 217-
377-2083 - Home: 217-687-2874
meganmumm@hotmail.com - www.
mummhampshires.com

New Senior Members

FEBRUARY 1, 2018 TO APRIL 30, 2018.

ILLINOIS
COLIN DEAKIN
INDIANA
JERRY FLANDERS
CHARLES PAXTON
4 M FARMS, JUSTIN &
APRIL MATTOX
TESSA MATTINGLY
CAMDEN VAKE & LAUNDREY KRIEGER
COLLIN & ELI DOWNING
CAUDILL FARM, MARANDA & RYAN CAUDILL
KANSAS
BRAYDEN & KASEN ROBINSON
MASSACHUSETTS
ZACHARY LYMAN
MINNESOTA
JAMES KIRCHENBAUER
NORTH CAROLINA
BAME FARMS, ANDREW BAME
OKLAHOMA
RAYLEE & LAREMI SOELL
JOSHUA CHRISTIAN
JENNIFER MOSER
OREGON
BAR 4R BOTHERN, ROBERT BOTHERN
PENNSYLVANIA
SMITH CLUB LAMBS, DWIGHT & GAIL SMITH
SOUTH DAKOTA
RONALD MARKO
TENNESSEE
GAGE GODDARD
TEXAS
ROCHELLE POZO
LINDA BERRY
WISCONSIN
ALF HAMPSHIRE, JOHN ALF

FROM AHJSA PRESIDENT:

Now that school is done for most of us junior members, it is time to enjoy the summer and begin the new show season! This spring has been very unpredictable in the state of South Dakota.

Not only did we have blizzards in mid-April, but a 50-degree day could turn out to be an 85-degree day instead. One thing that has stayed constant here has been our ambition to get outside to get the crops in, make sure the livestock are taken care of, and making sure neighbors, friends, and family all have what they need. This summer, I look forward to many journeys, including the several sheep shows I'll be attending, Girl's State, FFA and livestock judging camps, and overall having fun along the way.

As my senior year approaches, I realize how thankful I am to have been raised on a functioning farm/ranch. I feel that I have been given an amazing privilege to be able to work and feel accomplished at the end of a hard day's work. I feel honored to be a part of the agricultural industry and have learned a lot about being humble, leadership, and pride. My years in FFA have taught me about public speaking so that I am a better advocate for the sheep and Ag industry. After high school, I hope to attend SDSU and continue my leadership by being involved with agriculture on and off of campus.

I look forward to this summer and seeing all of the amazing sheep breeders within the Hampshire breed!

Yours Truly,
Danielle Houghtaling



SOUTH DAKOTA STATE UNIVERSITY

"Performance driven Hampshires with style!" Brookings, SD

WHEATON 6 189
BARELY LEGAL X WHEATON 8-075



Thanks to all of the buyers from our 2018 production sale!

Thank you to the Nelson family for their purchase of our high selling ram lamb.

Thank you to our volume buyer Paul Bingham.

We have additional rams for sale off the farm and will be consigning to the 2018 Center of the Nation NSIP Sale, Spencer, IA: July 27-28, 2018!



SDSU 3043

WHEATON 2-080 X SDSU 90099 (MILLERXUK)
PICTURED AS A 2 YEAR OLD

FOR MORE INFORMATION:

Karolynn Marsan UNIT MANAGER - CELL 208-661-4587

Jeff Held SUPERVISOR - CELL 605-690-7033

NSIP EBV'S AVAILABLE FOR ALL LAMBS.

BE SURE TO FOLLOW US ON FACEBOOK

FOR FLOCK UPDATES AND PHOTOS

Herrig Hampshires

One of our yearling ewe
entries for Sedalia.
We have saved our
best for the National
Sale!

Herrig 1193 RRNN January ram
Be sure to check out our full
consignment in Sedalia.

Our January ewe lamb entry for Sedalia

THANKS to all of our online sale,
Ohio and March Madness buyers
this spring!

David and Jake Herrig

Dave: 507-220-1360 - Jake: 507-227-4228
677 State Highway 267 - Slayton, MN 56172
jakeherrig@yahoo.com - www.herrigsheep.com

34TH NORTH EAST YOUTH SHEEP SHOW

July 19-22 2018

Mallory Complex, Eastern States Exposition

West Springfield, MA

The North East Youth Sheep Show (NEYSS) is the 3rd largest and longest running youth sheep show in the country. It is the premier all-breed junior show in the northeast, attracting 200 youth exhibitors and 600-700 head of sheep, with 20+ breeds represented.

Weekend activities include:

- Breed Shows
- Market Lamb Show
- Fleece Competition
- Fitting & Showmanship Classes
- Skill-a-thon & Quiz Bowl Contests
- Educational Clinics
- Friday Fun Night – Pizza party & Ice Cream Social
- Saturday Used Equipment Auction
- Presentation of the NESWGA Harry Hardwick Scholarship, Youth Grants & Spirit Awards



**Vinyl transfer designs for
apparel and accessories.
Great for all your show day
and promotional gear!**



Facebook: [facebook.com/ThiesenDesigns/](https://www.facebook.com/ThiesenDesigns/)

Email: thiesendesigns1@gmail.com

Stephen Cell (605) 677-7351

Premiums and participation awards are given, as well as breed Champion and Reserve Champion banners and sashes. The weekend culminates with the selection of the Supreme Ram, Ewe, and Flock awards. The NEYSS is open to youth 21 years old and under. The deadline to enter is June 15, 2018.

The NEYSS is sponsored by the New England Sheep & Wool Growers Association (NESWGA). It is supported by national breed associations, local organizations and individual sponsors.

To learn more about the NEYSS or the NESWGA, please visit www.nesheep.org.

Held's Hampshires

AURORA, SD 57002
JEFF | MARY | AUSTIN | AARON
CELL (JEFF): 605.690.7033

HELDHAMPSHIRE.COM | HELDHAMPS@GMAIL.COM



Held 17-1975

Thanks again to Mikara Anderson PA for adding this powerful fall ram lamb, Held 17-1975, to her show flock for 2018! Exceptional hip and big boned ram with lots of wool. He is by Held 16-1865 the ram Rabbit Creek Hampshires, NV purchased from us in 2017.



Held 17-1943

Austin Schiefelbein MN added this level designed fall ram lamb, Held 17-1943, to his breeding program this spring. Sired by Held 16-1795 our 2nd Feb ram lamb at NAILE in 2016!



Held 17-1976 NNPRR TW
(by Held 15-1742)

Our fall ewe lamb from the "2018 Heart of a Champion" sale went to Mikara Anderson PA. Thank you! Have fun showing her summer and fall!



Held 17-1965 NNPRR

Thanks to Shear We Go - Roger Sullivan Family, CT for adding this fall ewe from the AHSA sale on May 1 to Jenna's show flock!

A massive fall ram lamb, Held 17-1941, added to the "next generation" Fuller flocks at Clark SD.... families of Ty, Dusty and David Fuller. Sired by Held 16-1795 should be a great addition to their breeding program.



Held 17-1941

Held 18-2019 is a Jan 31 ewe lamb built with style and balance for Emrey Seeger at Manawa, WI. Our spring crop had a limited number of ewe lambs with most right at the last days of January.

Given these circumstances in the 2018 lamb crop for the 1st time in 25 yrs we will miss the Midwest Stud Ram Sale!



Held 18-2019

Check website heldhampshires.com for new posts or contact us directly!
Thanks to the Hampshire families that supported our sale entries and visitors to the farm this spring.

American Hampshire Sheep Association 2018 Scholarship Program

Purpose:

The American Hampshire Sheep Association offers scholarship(s) to junior Hampshire members to reward their work as Hampshire breeders and to encourage participation in Hampshire activities. The scholarship is available to any American Hampshire Sheep Association member (junior or senior) who is pursuing a college education following high school graduation and who has not passed their 21st birthday as of January 1, 2018.

Scholarship Information:

Scholarships will be awarded on an annual basis. The number of scholarships and the scholarship value will be reviewed annually by the AHSA Scholarship Committee (Youth Advisory Board). The AHSA Scholarship Committee will select a non-bias committee to review and rank the scholarship applications. Announcement of the Scholarship winner(s) will be announced prior to the Annual Meeting of the AHSA held annually in November in Louisville, KY.

Scholarship Requirements:

- Applicants must be either an active member of the American Hampshire Sheep Association (either a junior or senior member) or an immediate family member whose parents are members of the AHSA. Applicant must be an active member of the American Hampshire Sheep Association for a minimum of 5 years.
- Applicants must not have passed their 21st birthday as of January 1, 2018
- Applicants must be enrolled and in good standing at a college, university or technical school as of September 1st and must intend to enroll in classes at that school the next semester following the application deadline.
- Eligible members may re-apply for the scholarship if they meet the eligibility requirements for the application year.
- Applications will not be accepted from previous AHSA scholarship winners.
- Employees of the AHSA and their family members are not eligible to apply for the AHSA scholarship.

Scholarship Criteria:

- Hampshire experiences and achievements – 50%
- Leadership, school activities, community involvement – 30%
- Essay – 20%

Application Process:

- Applicant must complete the application form and submit the form per the instructions provided below. Application forms can be found on the AHSA website, or by contacting the AHSA office.
- Applications may be submitted either electronically or sent via the mail.
- A copy of the most recent school transcript must be included when submitting the scholarship application. If first semester freshman, attach proof of enrollment and high school transcript. Transcripts may also be sent electronically.
- All applications submitted must include the AHSA scholarship application form, summary and essay, along with transcripts. Applications must be postmarked or electronically submitted no earlier than June 1st and no later than October 1st to:

AHSA Scholarship
PO Box 231
Wamego, Kansas 66547
Email: asregistry@gmail.com

Scholarship winners will be notified by November 1st.

Scholarship winners who are able to attend will be recognized during the AHSA annual meeting. The 2018 AHSA annual meeting will be held in Louisville, KY during the North American International Livestock Exposition.

Summaries and Essay:

- Submit a brief summary of your sheep related activities. Include information about leadership roles, volunteer work, honors and awards as a member of 4-H, FFA or other agriculture related youth groups.
- Submit a brief summary of your non-sheep related activities. Include information about leadership roles, volunteer work, honors and awards.
- Submit a brief summary describing your experiences as a Hampshire breeder. Information should include when you first started raising Hampshire sheep; size of flock; management responsibilities; marketing strategies; involvement and achievements in shows (local, state, regional, national) and form of participation (i.e.: market lambs, breeding sheep, lead class, skill-a-thon, promotional contests, fleeces, sale committee, show volunteer); and any other venues you have used to promote Hampshire sheep.
- Submit an essay in response to the following question: What have your experiences related to raising Hampshire sheep taught you that will help you to achieve your career goals?
- Fill out the information below and submit a picture to be used when the winners are selected.

Applicant's Name: _____ Date of Birth: _____

Parent's Name: _____

Address: _____

City, State and Zip: _____

Email Address: _____

Phone: _____

Current Year in School: _____

School you are currently attending: _____

Number of years that you have raised or showed Hampshires: _____



FINDER
Hampshires,
Katahdins &
Maremma Livestock
Guardian Dogs

WARREN & PAM FINDER

Warren for sheep: (620) 532-1327 14715 W. Maple Grove Rd.
Pam for dogs: (620) 491-1087 Kingman, KS 67068

EBERT SHEEP FARM



King Tut sired yearling rams for sale. We also have a great set of ram lambs for sale, also sired by King Tut.



Thank you to all of our on farm and sale buyers!



Jeff, Kerri, Christine & Monica Ebert

10015 Flush Road - St. George, KS 66535

(785) 458-9174 - ebertsheepfarm@gmail.com - www.ebertsheepfarm.com

NELSON *Hampshires*

NELSON 17- 39

ALF 120-17

Alf ram purchased Sedalia, 2017, he is in with the ewes for Fall 2018 lambs



He is in with ewes for Fall 2018 lambs

2018 EWE LAMBS



2 yearling ewes going to Sedalia in June

Rodney & Kathy Nelson
13329 WCR 74 Eaton, CO 80615

R: 970-481-9837 | K: 970-481-0861 | Nelsheep1@what-wire.com

Pictured is the American Hampshire Sheep Association Office Staff



Pictured from left to right is Joelle Sylvester, who was hired in the fall of 2017 and she is responsible for data entry for several breeds, including Hampshires. Next to her, is Mackenzie Padgett, the AHSA summer intern. Mackenzie, will work on several projects during her summer in our office. Third from the left is Kim Baker, our office manager, who has been employed by AHSA for a month. Kim has several responsibilities including organizing incoming and outgoing mail, helping with emails and assisting the executive secretary with promotion efforts. On the far right, is Janette Fund, who handles data entry for a large number of our associations. Janette has been with AHSA for three years.

NATIONAL SHEEP IMPROVEMENT PROGRAM SALE

NSIP will host two sales in 2018 that sell rams and ewes that are backed by performance records. If your Hampshire program is geared toward using performance data, you may want to consider one of these sales.

The first sale is the Center of the Nation NSIP sale that will be held in Spencer, Iowa on July 28th. The second sale is the Eastern NSIP sale that will be held in Wooster, OH on August 11th.

There are usually educational programs and presentations about the use of NSIP at these sales. For further information or a sale catalog, go to nsip.org.

YOUTH CONNECTION

Nutritional Requirements for Sheep

While there is no specific set of feeds for sheep, it is important that they are getting enough nutrients and the correct nutrients in their system to thrive. All sheep need different levels of water, energy, protein, vitamins, and minerals. Their nutritional needs are also based on the age of the sheep, sex of the sheep, and whether or not they are at some point in their gestational period.

Water is the most important nutrient for any living organism, sheep included. Water needs to be clean and fresh for the sheep to drink out of. Sheep drink double to triple the amount of dry matter that they eat. If sheep do not have clean water, they are less likely to eat what they normally do.

Energy is a major nutrient for sheep and makes up the largest portion of their diet after water. Energy is broken down into carbohydrates and fats. Most energy comes from sheep eating grass, hay, corn, oats, and other forages and silages.

An energy deficiency is fairly common in sheep because many pastures are low quality and do not provide enough energy. Common signs of this deficiency are reduced growth, little to no wool growth, less consumption of feed and water.

When trying to find the right protein for sheep, it is important to look at the quantity of protein in a feed and know how old your sheep are that you will be feeding this protein to. Young lambs are given the highest amount of protein to help them grow and build muscles.

A lot of proteins are given as supplements because it is an expensive nutrient and sheep naturally produce a portion of the protein they need. Common feeds with high amounts of protein are cottonseed meal, soybean meal, fish meal, and linseed meal.

Urea can be used as a source of protein, but it should only be fed in small amounts as it can be toxic to sheep. Urea should only be fed to yearlings and mature sheep as young lambs' rumens are not yet developed.

There are 16 different minerals that sheep need, but some of them are needed in large amounts, while others are only needed in very tiny amounts.

Salt and Chlorine are important to sheep because they help regulate many bodily functions. Phosphorus and Calcium must be given in similar amounts because they both help develop the skeleton of the sheep.

Salt blocks can be used for sheep to make sure they are getting enough salt and chlorine. Only white salt blocks should be used. Mineral blocks should not be used because they contain amounts of copper, which is toxic to sheep.

Vitamins are the last nutrient that sheep need to survive. Most sheep, especially older ewes and rams, need Vitamins A, D, and E. Vitamins B and K come from the rumen, or one of the stomachs, in the sheep. They are made by combining other chemicals which form Vitamins B and K.

Fiber is an important nutritional requirement for sheep to keep their rumens functioning properly. Roughages are a common fiber used to make sure sheep are getting enough fiber in their diets.

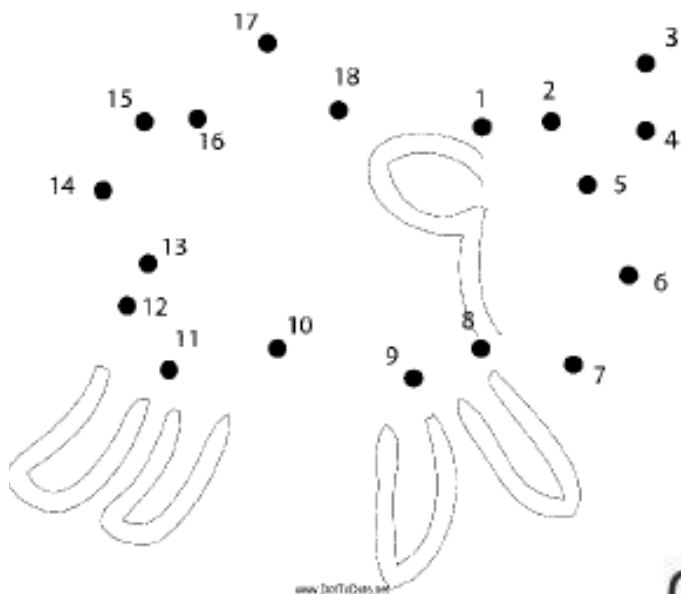
Mature ewes who are in early and mid-gestation should be fed the minimal nutrients required and do not require much maintenance. Mature ewes that are in late gestation and getting ready to lamb, their nutritional value increases because a majority of lamb growth happens during this time.

Ewes that are lactating typically have the most nutritional needs of any females because they are producing milk and caring for their lambs.

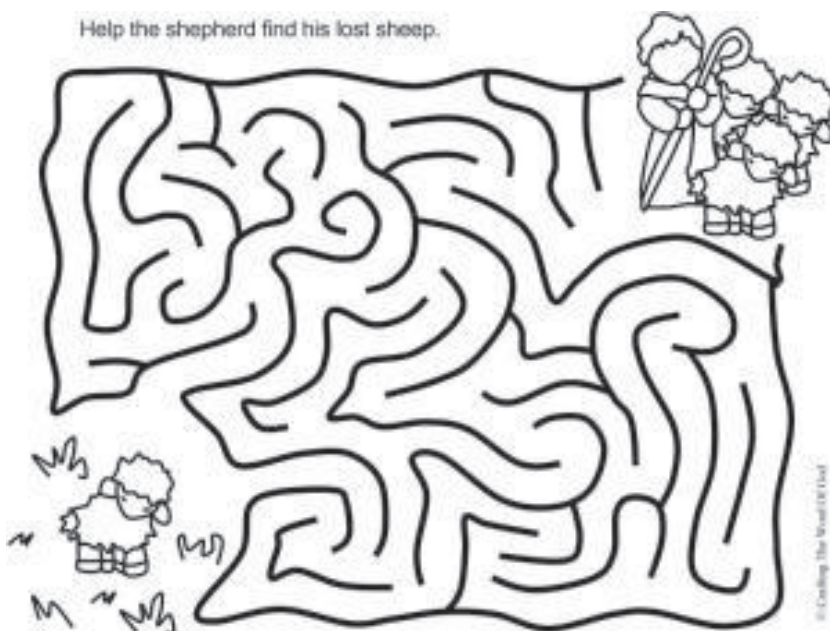
Young ewes and rams require higher nutritional needs until they are at least a yearling. This is because they are still growing and developing and need extra protein, minerals, etc. to mature.

All sheep need to consume more energy when the temperature drops to keep warm. The temperature varies for sheep based on their length of fleece. Therefore, the more wool a lamb has, the colder the temperature it can withstand.

Connect the Dots



Sheep Maze



PREDICTABLE GENETICS



WOW!
11 EWES
AVERAGED
\$1200

CASKEY 8421
HIGH SELLING EWE LAMB
PURCHASED BY AVERI SMITH

CASKEY 7595
HIGH SELLING YEARLING EWE
PURCHASED BY KELSEY SWONGER

THANK YOU TO THE FOLLOWING BUYERS AT OUR 6TH ANNUAL "SHARING THE GENETICS" ONLINE SALE

AVERI SMITH, IA
CHRIS MEYER, IL
KATHRYN PERSON, IL
ALF HAMPSHIRE, WI

GRACE POWELL, TN
KELSEY SWONGER, KS
TVRDY HAMPS, NE
SPENCER JACOBSEN, SD

*** ANNOUNCING ***

BROOD EWE REDUCTION SALE
JUNE 14, 2018
ONLINE AT WLIVESTOCK.COM
SELLING 20 TOP BROOD EWES

ALL OUR HAMPSHIRE ARE FOR SALE PRIVATELY!

WE LAMBED 175 HAMPSHIRE THIS LAMBING SEASON AND WE ARE OVERSTOCKED SO ALL OF OUR SHEEP ARE AVAILABLE FOR SALE UNTIL WE HAVE SOLD 30 HEAD. CALL FOR DETAILS!

MIKE, CARRIE, JASON & KYLE CASKEY

1222 171ST ST. HOLLAND, MN 56139

PH: 507.347.3229 | CELL: 507.215.0266

MGCASKEY@WOODSTOCKTEL.NET | WWW.CASKEYPINELAWNFARMS.COM



MIDWEST JUNIOR PREVIEW SHOW



CHAMPION EWE
Shown by Kelsey Swonger, Kansas



CHAMPION RAM
Shown by Trey Spoonster, Missouri



RESERVE CHAMPION EWE
Shown by WT Taylor, Kentucky



RESERVE CHAMPION RAM
Shown by Campbell Coyle, Kentucky



RESERVE CHAMPION EWE
Shown by Beau Mumm, Illinois



RESERVE CHAMPION RAM
Shown by Morgan Hauer, Indiana

2018 AHSA Ewe Lamb Futurity Rules & Point Record Form

Sponsored by the American Hampshire Sheep Association

Point Scoring:

- A point records form must be filled out for each show and forwarded to the American Hampshire Sheep Association office by November 1, 2018. The form must be signed by the superintendent of the show who must also verify the youth owning the lamb did physically show the lamb unless physically impaired. If physically impaired, the junior member must still be present at the show even if they are unable to show their sheep in the show ring.
- At each individual show the ewe lamb may earn futurity points from both the open division show and/or the junior division show only if the shows are held at different times and judged by different judges. Only the junior show placing from the North American International Livestock Exposition will be counted. Futurity ewe lambs can only be shown in breeding class. The ewe lamb cannot be shown in market classes.
- Futurity ewe lambs may be shown at an unlimited number of shows and submit points from the shows shown in. Only the top 5 point forms submitted can be used toward the futurity final point totals.
- No designated show will be held before May 15th.
- Futurity awards will be announced during the annual meeting of the American Hampshire Sheep Association. Premiums will be mailed to the winners from the AHSA office after December 1st. Winners will also be posted on the AHSA website.
- Attached is the futurity point sliding scale from which points will be determined: (see information attached)
- There will be separate divisions for slick shorn and fitted ewe lambs. There will also be separate divisions for bred and owned slick shorn and fitted ewe lambs. An individual sheep can only participate in one division.

Premiums for Purchased Division:

A minimum of (\$2,000) will be awarded in premium in both the fitted and slick shorn divisions. The guaranteed money totals will be given as follows:

1st - \$400 (20%)	6th - \$175 (8.75%)
2nd - \$300 (15%)	7th - \$150 (7.5%)
3rd - \$250 (12.5%)	8th - \$15 (6.25%)
4th - \$225 (11.25%)	9th - \$100 (5%)
5th - \$200 (10%)	10th - \$75 (3.75%)

Premiums for Bred & Owned Division:

1st - \$300 (30%)
2nd - \$250 (25%)
3rd - \$200 (20%)
4th - \$150 (15%)
5th - \$100 (10%)

In case of a tie, each animal that is part of the tie will receive the same amount.

Exhibitor Rules:

- Rules of exhibition shall be those published in respective premium books of each show. Ownership deadlines might vary from state to state. All ewe lambs must be nominated by Sept 1st.
- All juniors who meet the requirements for the Junior Show at the North American Livestock Exhibition are eligible to participate in the Futurity Ewe Lamb program. Rules for the NAILE are:
 - Not to be more than 21 years of age the date of the show in November, no lower age limit but junior member must be physically capable of showing his/her own sheep.
 - Junior member must be present to show their own sheep unless physically impaired. If the junior member is physically impaired, the junior member must still be present at the show that the futurity ewe lamb is being shown at and earning points from even if they are unable to show their own lamb in the show ring.
 - Animals purchased must be transferred through the AHSA office. The date of sale will reflect when the animal was purchased and must be prior to September 1st. No ewe lamb will be able to earn futurity points prior to being sold and transferred to the junior member or registered in the bred and owned division.
 - Current year paid membership in the American Hampshire Sheep Association is required. Membership must be paid prior to September 1st.
- Juniors are responsible to be knowledgeable of and abide by these rules.
- All lambs must be purchased and transferred directly to the youth and must be recorded in the AHSA office by the sale management or with a completed 2017 AHSA Ewe Lamb Futurity Nomination form. For the bred and owned division, the lamb must be bred by the immediate Family or by the junior member. Immediate family is defined as grandparents, parents and siblings of the junior exhibitor. These lambs can remain in multiple juniors names but only one junior can submit point forms on each individual lamb. If the lamb is transferred out of the youth's name it will NO LONGER be eligible. No partnerships, farm, family, 4-H club or FFA chapter names will be accepted. Also, the purchaser cannot be a family member or family member of an employee of the breeder of the lamb.
- Ownership of ewe lambs or points earned in the futurity are not transferrable to any other person other than the original owner, nor are the points transferable from one lamb to another.
- No futurity entrant may receive premiums for more than two ewe lambs. Total points earned by two ewe lambs cannot be combined to one lamb.

Consignor Rules:

- Entries are limited to fall and spring born ewe lambs.
- Nomination fee is \$25 per ewe lamb and payable to the AHSA. Fee will be paid to the AHSA office by the breeder of the lamb or the junior member who nominated their own lamb and must be submitted at the time of the transfer or registration of the lamb. Breeder nomination fee of the entire 2018 lamb crop can be done by paying a one-time \$200 nomination fee.
- Each ewe lamb must conform and abide by the rules and regulations of the individual sale (see below)
 - Ewe lambs sold in an online or production or by private treaty can be nominated for the 2018 AHSA ewe lamb futurity program by completing and submitting the 2018 AHSA ewe lamb futurity nomination form along with the nomination fee. Transfers must be completed within three weeks of the sale date.
 - Ewe lambs nominated at public auction managed by Heartland Group, Banner Sale Mgt, or any other recognized sale management, will be recorded by the sale management at the time of the show and designated with an F brand prior to the sale

- The AHSA will not be held responsible for any dispute and or disagreements between buyers and sellers.
- Lambs will be permanently identified for futurity purposes and recorded by their individual scrapie tag number and/or flock tag number.



2018 Hampshire Ewe Lamb Futurity Point Record Form

I, (exhibitor name) _____ have shown the Hampshire ewe lamb (Breeder, flock tag #) _____, (scrapie tag #) _____ (AHSA Reg #) _____. The ewe lamb, which placed _____ in a class of (total head #) _____ (provide class name: Fall, Jan etc.) _____ ewe lambs, was shown in the (open or junior) _____ division of the following livestock show: (show name along with city, state) _____ on this date _____.

This ewe lamb is competing in the fitted division _____ or the slick shorn division _____.

This placing is verified by the superintendent of the above listed below.

Show Superintendent Printed Name: _____

Show Superintendent Signature: _____

Superintendent Contact Phone Number for Verification of Placing: _____

Please verify that the youth owning the lamb did physically show the lamb unless physically impaired. If physically impaired, please verify that the youth owning the lamb was present at the show.

Youth signature (owner of lamb) _____ Member # _____

Please make sure all blanks are completed when mailed to the AHSA office or the form will be invalid. Forms are required to be postmarked and mailed or faxed to the AHSA office by November 1, 2018.

American Hampshire Sheep Association
 PO Box 231, 305 Lincoln St.
 Wamego, KS 66547
 Fax: 758.456.8599

KJELDGAARD FARMS

"Our passion-sheep with style and size."

WE WERE DEALT A COUPLE GREAT HANDS THIS YEAR



THE 4 QUEENS

2 ARE SIRED BY THE WILLWERTH RAM, 1 BY THE DEAKIN RAM, 1 BY KJELDGAARD 14-830RR



THESE 9 HEAD ARE ET LAMBS FROM ADEL AND WILLWERTH RAM



THE ROYAL FLUSH

ADEL WITH HER 2 LATE WILWERTH SIRED LAMBS

WILLWERTH 157 X ADEL
(OUR WINNING EWE LAST YEAR)



JAKE FROM STATE FARM KJELDGAARD 17-916RR

HE'S A FULL BROTHER TO ADEL
HE SIRED A IMPRESSIVE SET OF LAMBS



Al and Mary Kjeldgaard | 440 Co. Rd. IJ | Tekamah, NE 68061

almary@microlnk.com | 402.870.0397

State Hampshire Associations

OHIO HAMPSHIRE SHEEP ASSOCIATION OFFICERS

President: Dan Shell
1901 Doak Road
Midland, Ohio 45148
Phone: 937 302-8367
Email: Shellshampshires@hotmail.com

Secretary/Treasurer: Marla Shell
1901 Doak Road
Midland, Ohio 45148
Phone: 614 496-8575
Email: mdshell319@hotmail.com

Vice-President: Frank Sexten
3420 State Route 380
Xenia, Ohio 45385-9735
Phone: 937 371-1392
Email: fsexten@gmail.com

Board of Directors:
Denise Deal
Frank Sexten

This information was provided by state Hampshire associations. We encourage all of our state Hampshire associations to submit information on their activities for each issue of the Hampshire Heartbeat.

ILLINOIS HAMPSHIRE SHEEP ASSOCIATION OFFICERS

President: Megan Mumm
49 CR 1300 N
White Heath, IL 61884
Phone: 217-377-2073
Email: meganmumm@hotmail.com

Secretary/Treasurer: Bill Chapin
5680 E Reed Rd
Coal City, IL 60416
Phone: 815-954-5129
Email: chapinhamps@gmail.com

Directors:
Chris Cahoon
Luke Benjamin
Chris Meyer
Charlotte Toohill



New England Hampshire Sheep Association Officers

President: Kyle Thayer
Vice President: Darlene Leary
Treasurer: Tina Fisk Colt
Secretary: Sue Searle

MINNESOTA HAMPSHIRE SHEEP ASSOCIATION OFFICERS

President: Rod Scheller
3646 County Rd 37
Monticello, MN 56362
Email: rodscheller@gmail.com

Vice-President: Bruce Bakken
29557 State Hwy 13
Hartland, MN 56042
Email: bjbakken54@gmail.com

Secretary/Treasurer: Art Frame
16465 Paul Ave.
Worthington, MN 56187
Email: aframe@nobleswildblue.com

Director: Mark Christensen
1561 250th Ave.
Tyler, MN 56178
Email: mcchris@frontiernet.net

Director: Gary T. Klug
Box 383
Harlan, IA 515372
Email: klughihamp@tm.net

Director: Reid Merrill
2163 250 St
Canby, MN 56220
Email: rvmerrill50@gmail.com

Director: Todd Schmidt
21407 775th Ave
Albert Lea, MN 56007
Email: rschmidt76@gmail.com

Director: Tom Bobendrier
1351 US Hwy 75
Pipestone, MN 56164
Email: shebob@svtv.com



SOUTH DAKOTA HAMPSHIRE SHEEP ASSOCIATION OFFICERS

President: Brent Larson
20205 477th Ave
White, SD 57576
Phone: 605-633-1561
Email: larson76@gmail.com

Vice President: David Juntunen
43950 187th Ave
Vienna, SD 57271
Phone: 605-628-2949
Email: jute@itctel.com

Secretary: Kristin Marshall
45491 204th ST
Arlington, SD 57212
Phone: 605-770-0132
Email: marshallke83@outlook.com

INDIANA HAMPSHIRE SHEEP ASSOCIATION OFFICERS

President: Dan Myers
833 E CR 350 S
Logansport, Indiana 46947
Phone: 574-355-6840
Email: indianahamps@gmail.com

Secretary/Treasurer: Kris Myers
833 E CR 350 S
Logansport, Indiana 46947
Phone: 574-355-6840
Email: indianahamps@gmail.com

NEW JERSEY HAMPSHIRE SHEEP ASSOCIATION OFFICERS

Don Kniffen - President.

Susan Miller - Secretary/Treasurer

Our main focus is to support the youth showing Hampshires in New Jersey. We mainly provide special awards for Hampshires in the various shows in NJ.

PENNSYLVANIA HAMPSHIRE SHEEP ASSOCIATION OFFICERS

President/Secretary: Mindy Holtry
717-776-4192

The main focus of the PHSA is to support junior Hampshire exhibitors at the Keystone International.

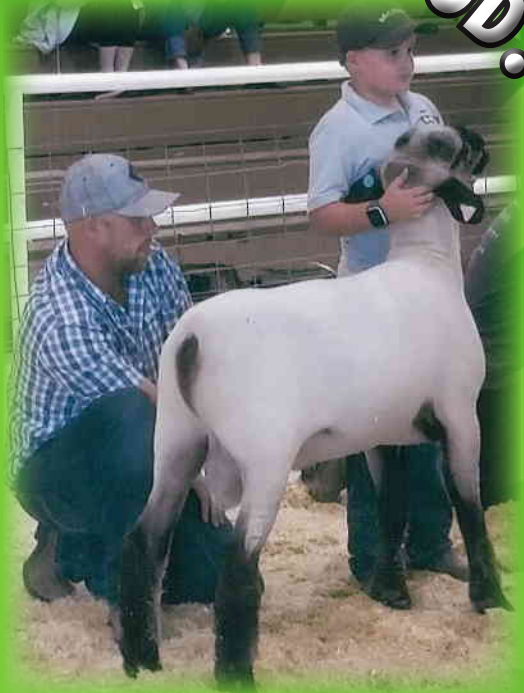
AHSA DIRECTOR ELECTIONS

It is again time to consider running for the open AHSA director positions. The election will be this fall and ballots will be mailed in early October to all senior members who have paid their dues in the last 24 months. Directors up for election in 2018 are Lisa Hanson from District #1 (California, Oregon, Washington, Nevada, Hawaii, and Alaska), Phyllis Davison from District #5 (Iowa, Kansas, Nebraska, and Missouri), Scott VanSickle from District #7 (Alabama, Arkansas, Florida, Georgia, Kentucky, Louisiana, Mississippi, North Carolina, South Carolina, Tennessee, Virginia, and West Virginia), and Tom Bobendrier, the At-Large Director. Lisa Hanson and Phyllis Davison are finishing up their third terms and are ineligible for re-election. Tom Bobendrier and Scott VanSickle have each served two terms and can be re-elected one more time. If you are interested in running for any of these positions, we will need your biography submitted to the AHSA Office by September 10, 2018. If you would like more information on running for the AHSA Board of Directors, contact Jeff at 785-456-8500.

**SHEEP THAT LIVE.
SHEEP THAT LAST.
SHEEP THAT LOOK GOOD.**



Our show flock has been slick shorn for over twenty years. Above, a shot of our 2018 yearling show ewes. At the right is our 1st winter ram lamb at the 2017 Utah State Fair.



3 generations of McNeils selling the top pen of ram lambs at \$975 per head at the 2017 Utah ram sale. We don't raise wether sire sheep, we don't raise frame style sheep. We raise big, heavy bodied, muscular sheep that allows us to sell 80-100 commercial rams each year to many repeat buyers.

**WE MAY BE RAISING
YOUR NEXT STUD RAM**

ALVIN AND CATHY MCNEIL

H: 435.783.4811 - C: 435.640.8172

MCNEIL

2295 N. SR. 32
KAMAS, UT 84036

RYAN MCNEIL

C: 435.640.2310

National Hampshire Sale

The National Hampshire Sale and National Hampshire Wether Sire Sale will again be held during the Midwest Stud Ram Sale, June 25–30 in Sedalia, Missouri. The Hampshire events will kick off this year with a new junior show that will be held on Tuesday, June 26th at 6:00 p.m. with Tucker Beckmier as the judge. There will be classes for fitted and slick shorn yearling ewes and ewe lambs. There will also be showmanship classes offered. Sale discounts will be awarded to the champions and showmanship winners. There is an entry form on the AHSA website. The show to set the sale order will be held on June 27th with Steve Reid as the judge. The Hampshire wether sire show will be held on Thursday, June 28th with Marvin Ensor evaluating the entries. Friday, June 29th the National Hampshire Sale will be held and Saturday, June 30th the National Hampshire Wether Sire Sale will take place.

The AHSA will provide donuts and water on both Friday and Saturday morning during the Midwest sale. Furthermore, the AJHSA will have a silent auction during the Midwest Sale, so if you would like to bring a donation for his junior fundraiser, please plan to do so. We hope to see you in Sedalia for the Hampshire activities!

Obituary for Dallas W. Alford

QUINCY, ILLINOIS -- Dallas W. Alford, 77, of Quincy, formerly of Barry, died Sunday, Feb. 18, 2018, at the Barry Community Care Center in Barry.

He was born July 18, 1940, in Barry, to George W. and Barbara L. (Kinne) Alford. They preceded him in death.

Dallas was a 1958 graduate from Barry High School. He was formerly employed at Electric Wheel in Quincy. He was a farmer and raised Hampshire sheep for many years. Dallas was a 4-H member and leader for a number of years and a real estate agent for several years.

He served on the Illinois Lamb and Wool Board and was a member of the American Hampshire Sheep Association for over 50 years. Dallas served on the Pike County Fair Board and was sheep superintendent. He enjoyed judging at the county fairs. Dallas, well known as a notorious storyteller, was a fixture at the Illinois and Missouri State Fairs and the Illinois county fair circuit. His flock was competitive, showing at the Illinois and Missouri State Fairs. The flock was founded on McPike, Vandiver and J. E. Snell bloodlines.

Dallas was instrumental in establishing the Illinois Sheep and Wool Promotion held at the Quincy mall for many years. At the time, this event was innovative because it took the promotion out of the barn and to the general public. He was a speaker on several occasions at the Illinois Sheepman's Holiday Symposium, and hosted shearing demonstrations across the Midwest. Other out-of-the-box promotion examples were using his Hampshires as part of parade floats at small town festivals in rural Illinois. He truly enjoyed promoting lamb to the public, using a hands-on approach to educating others, often giving away many lamb samples and personal anecdotes to all interested in the sheep industry.

He is survived by his children, Debora Deakin, husband Greg, of Cuba, Ill., Douglas Alford, wife Chris, of Pleasant Hill, and Diane Toapanta, husband Marco, of Parkville, Mo.; two granddaughters, Paige Del Toro, husband Micah, of Owatonna, Minn., and Tiffany Deakin of Cuba, Ill.; three grandsons, Colin Deakin of Cuba, Ill., and Dante and Andre Toapanta of Parkville; one brother, Kent Alford, wife Joyce, of Quincy; as well as several nieces and nephews.

Memorials may be made to the Alzheimer's Association.



2018 AHSA MEMBERSHIP DIRECTORY

ALABAMA

NELSON-WHITE SHOW LAMBS

JESSICA WHITE
1841 County Road 7
Wedowee, AL 36278
334-863-1556
jnw0018@auburn.edu

ARKANSAS

RAGZ TO RICHZ SHOW LAMBS

REAGAN GRUBBS
2374 HWY 26 East
Delight, AR 71940
870-925-0295
white.jessica@lee.k12.al.us

WEAVER SHOW SHEEP

KRISTI WEAVER
14105 S. Hwy 265
West Fork, AR 72774
479-263-6874
ewe_are_special@yahoo.com

MICHAEL WEAVER

14105 S. Hwy 265
West Fork, AR 72774
479-263-6874
weaverdairy316@yahoo.com

CALIFORNIA

MACKENZIE & OWEN ARNOLD

PO Box 478
Mariposa, CA 95338
209-617-8604
carnold84@gmail.com

BEAM RANCH

BEN & BEAM FAMILY
25050 Mariposa Rd
Escalon, CA 95320
209-614-9695
abeam@sjcoe.net

PARADIGM HAMPSHIRE

JONATHON FIELD & BILL
BUCKMAN
6501 Nicolaus Rd
Lincoln, CA 95648
916-847-2372
ctfashpdrd@aol.com

BEAVER CREEK/BUCKMAN

WILLIAM & CAROL BUCKMAN
539-540 Pittville Road
Mearthur, CA 96056
530-336-5925
Bbuck@Citilink.net

C & B CLUB LAMBS

BRIANA RAMSEY & CHRIS CE-
RESA

81 NORTHBROOK WAY
Willits, CA 95490
707-354-0200
ceresacc@gmail.com

ROGER CURL

1430 Dias Dr
San Martin, CA 95046
408-310-8166
rcurl@garlic.com

TED DIETZ

4379 E Yosemite Ave
Merced, CA 95340
209-383-6453
cdietz5765@aol.com

ESTES SHOW LAMBS

RYAN ESTES
1375 N Academy Ave
Sanger, CA 93657
909-226-4836
hopanddeb@yahoo.com
FARAO CLUB LAMBS
JAMIE FARAO
28803 W Gun Club Rd
Gustine, CA 95322
209-777-1033
faraoclublams@hotmail.com

FISH CLUB LAMBS

KARIN FISH
4005 Karchner Rd
Sheridan, CA 95681
916-214-0078
kafish4@yahoo.com

SARAH FONTANA

12635 Hager Ct
San Martin, CA 95046
408-621-7733
sfontana1981@yahoo.com

SUNNY SLOPE CLUB LAMBS

WAYNE & CHRIS FORSYTHE
5805 Silva Road
Mariposa, CA 95338
209-761-4113
forsyth@sti.net

KENNETH & MELANIE

FOWLE
2300 E Callahan Rd
Etna, CA 96027
530-598-1165
mfowle96207@gmail.com

HEUVEL CLUB LAMBS

BOB HEUVEL
11458 Haggie Road
Wilton, CA 95693
916-0690-7655
heuvelclublams@hotmail.com

NICK FARINELLI & JESSE SILVA

PO BOX 465
Le Grand, CA 95333
209-389-4080

ANDREA JONES

2946 130th St W
Rosamond, CA 93560
661-917-2966
andrea717@gmail.com

KAELIN LIVESTOCK

DOUG KAELIN
407 Butteview Dr
Gridley, CA 95948
530-624-0723
kaelinclublams@live.com

SUNRISE SHEEP

KEENE FAMILY
13736 Lambuth Rd
Oakdale, CA 95361
209-613-7015
gypsykeene@gmail.com

THE FRENCHMAN'S FLOCK

BOB LABRUCHERIE
9671 Road 28 1/2
Madera, CA 93637
559-673-4332
labrucher@aol.com

BOB & CHERYL LAURITSEN

469-440 Lambert Ln
Standish, CA 96128
707-337-7723
napacheryl@aol.com

IMAGE CLUB LAMBS

SCOTT LAYNE
3113 North Ave
Modesto, CA 95358
209-402-7235
sdlayne@sbcglobal.net

MICHAEL LEVENTINI

624 S Indiana Ave
Modesto, CA 95357
209-605-3275
mleventini@msn.com

JANET MACHADO

6371 County Rd 24
Orland, CA 95963
530-865-2965
sdlayne@sbcglobal.net

MASSERA FARMS

JACK MASSERA
PO BOX 1426
Salinas, CA 93902
831-663-5537
jmassera@sbcglobal.net

ROBBY MASSERA

PO BOX 651
Castroville, CA 95012
831-236-2349
robby.massera@gmail.com

NICEWONGER CLUB LAMBS

JOHN NICEWONGER
6706 Lon-Dale Rd
Oakdale, CA 95361
209-847-8976
nicelamb1@gmail.com

KELLY O'BRIEN

Po Box 416
Bloomington, CA 92316
909-844-8073
showlivestock@gmail.com

JACKSON VALLEY FARMS

TOM OHM
4120 Jackson Valley Rd
Ione, CA 95640
209-274-2401
tohm@volcano.net

WALKIN' L CLUB LAMBS

DUSTIE PARKER
15970 Lowery Rd
Red Bluff, CA 96080
531-526-8934
dparkerx4@me.com

HARRY SAMPSON

Po Box 115
Gazelle, CA 96034
530-340-0108
hsampson@cot.net

SCHLEGEL CLUB LAMBS

BRUCE SCHLEGEL
1420 Branston Ct
Morgan Hill, CA 95037
408-823-9434
bruces@garlic.com

SUMMEY FAMILY FARM

BLAIR SUMMEY
8200 Mccourtney Rd
Lincoln, CA 95648
916-408-8738
summeyfamilyfarm@gmail.com

WEST COAST CLUB LAMBS

GARY NIX & THOMAS EAST
9680 Eastside Road
Potter Valley, CA 95469
707-354-4369
eastcavelo@yahoo.com

PETE CRUZ TORRES

6571 N Western Ave
Fresno, CA 93722
559-797-2192
jtorr017@yahoo.com

STEVEN URENDA

PO BOX 866
Knightsen, CA 94548
707-598-1347
steven.urenda@yahoo.com

WARTJES LIVESTOCK

NICK WARTJES
7836 Patterson Rd.
Oakdale, CA 95361
209-481-3763
wartjeshivestock@gmail.com

TAMMY ZEDIKER-LUIZ

8234 Hwy A-12
Montague, CA 96064
530-459-1245
tluiz@4fast.net

ZEIGLER CLUB LAMBS

STEVE & CINDI ZEIGLER
2126 Boundary Ave
Ramona, CA 92065
760-445-2162
steve@zeiglerclublams.com

MORINO BROTHERS

25053 Dove Rd
Escalon, CA 95320
209-612-1989
morinobro@aol.com

COLORADO

CREGO LIVESTOCK

LARRY & DIANI CREGO
7710 Livestock Ln
Ft. Collins, CO 80524
970-482-6958

HELMING HAMPSHIRE

MARLIN HELMING
25044 Hwy 392
Greeley, CO 80631-9642
970-336-1613
mdhelming@msn.com

MACLENNAN CLUB LAMBS

DON OR LOGAN MACLENNAN
8200 Behrens Rd
Byers, CO 80103
303-822-5419
barnboss20@aol.com

MANEOTIS RANCH

NICK & KAREN MANEOTIS
Box 1698
Craig, CO 81626
970-629-2719
nmaneotis@msn.com

WILLARD MCLAUGHLIN

FAMILY
400 CR 220
Craig, CO 81625
970-629-1196
mclaughlinssheep@gmail.com



NELSON HAMPSHIRE

RODNEY OR KATHY NELSON
13329 Wcr 74
Eaton, CO 80615
970-481-9837
nelsheep1@what-wire.com

OVERMAN CLUB LAMBS

12370 WCR 78
Eaton, CO 80615
970-227-3869
Onyxover@Aol.com

D & K HAMPSHIRE

PREUIT FAMILY
286 E CR 72
Wellington, CO 80615
970-223-1125
depreuit@colostate.edu

SIMPSON LIVESTOCK

JASON SIMPSON
20727 WCR 84
AULT, CO 80610
970-371-0276
jsimpsoncl@aol.com

STERKEL HAMPSHIRE

STEVE & MICHELLE STERKEL
3752 WCR 7
Erie, CO 80610
303-601-9463
sterkel_livestock@hotmail.com

POWELL CLUB LAMBS

14245 RD 49
Burlington, CO 80807
719-340-7443
ldpal7@yahoo.com

DELAWARE

MAPLE LANE SUFFOLKS

TED BOBOLA
5268 Forrest Ave
Dover, DE 19904
302-492-3367
bobolalams48@aol.com

WOODBIDGE ANIMAL SCIENCE

KAREN BREEDING
14712 Woodbridge Road
Greenwood, DE 19950
302-232-3333
karen.breeding@wsd.k12.de.us

EDWARD & TINA HOLZ II

1150 Morgans Choice Rd
Camden, DE 19934
302-697-6678
edandtinaholz@aol.com

BARBARA & WENDY HRUPSA

6035 Hopkins Cemetery Rd
Felton, DE 19943
302-632-8199
whrupsa@gmail.com

OLIVER & JOSHUA MENARD

339 Weiner Ave
Harrington, DE 19952
302-270-8135
menard@cybertronacres.net

LAKE FOREST FFA

ALISON SCOTT
5407 Killens Pond Road
Felton, DE 19943
302-284-9291
aescott@lf.k12.de.us

WRIGHTS STOCK FARM

SCOTT & CHRISTY WRIGHT
133 Bowdle Dr
Harrington, DE 19952
302-362-0831
sewright@udel.edu

WOODBIDGE FFA

C/O KAREN BREEDING
14712 Woodbridge Rd
Greenwood, DE 19950
302-232-3333
karen.breeding@wsd.k12.de.us

FLORIDA

TURKEY CREEK FFA

B COLEMAN
5005 Turkey Creek Rd
Plant City, FL 33567
813-928-7239
buddy.coleman@sdhc.k12.fl.us

VOLUSIA SHOW PRIDE

2290 Mud Lake Drive
Deleon Springs, FL 32130
386-956-7893
lorismith1@bellsout.net

GEORGIA

TOM HUBER

1280 MCREE GIN RD
Watkinsville, GA 30677
706-769-6721
mthuber1@yahoo.com

MIKE STAMEY

664 Tucker Hollow Rd
Calhoun, GA 30701
706-629-0969
mrstamey0212@comcast.net

M&M LIVESTOCK

260 Straylott Rd
Franklin, GA 30217
706-302-9508
2livestock08@live.com

IOWA

BRAD AMTHAUER

1175 Vance Ave
Beaman, IA 50609
641-821-0301
bradamthauer@gmail.com

IOWA STATE UNIVERSITY

C/O BEN DRESCHER
1221 Kildee Hall
Ames, IA 50011-3150
515-291-4725
bdresche@iastate.edu

BILL DOHRMANN

PO BOX 502
Fayette, IA 52142
563-425-4095
sdohrmann@iowatelecom.net

MAPLE CREST FARM

GARY ERICKSON
1896 220th St
Humboldt, IA 50548
515-332-1680
gssheep@ncn.net

AMELIA, LOLA & MYLE FRIMML

597 Marengo Ave
Marengo, IA 52301
319-330-9071
dfrimml@hotmail.com

GREINER CLUB LAMBS

TED GREINER
25517 330Th Ave
Keota, IA 52248
641-660-6839
tedgreiner@gmail.com

HAMIL HAMPS

WADE HAMIL
32364 280Th St
Merrill, IA 51038
712-540-6015

HINDMAN CLUB LAMBS

MIKE HINDMAN
1648 640Th Ave
Albia, IA 52531
515-491-7829

RICHARD HOCRAFFER & FAMILY

118 14th Ave SW
Clarion, IA 50525
515-532-3808
hokey2008@hotmail.com

KAMPEN CLUB LAMBS

CHAD KAMPEN
2076 K Road
Humboldt, IA 50548
515-332-5782

KARBER AND KIDS

STEVEN KARBER
1049 220Th St
Jefferson, IA 50129
515-386-8216
skarber@mcfarlandclinic.com

MATTHEW KENNEDY

17994 Richland Rd
Kirkville, IA 52566
979-224-0081
matt.kennedy147@gmail.com

KIRSCHTEN SHEEP FARM

KERRY KIRSCHTEN
5060 Jefferson Ave
Alton, IA 51003
712-395-0377
kirschten59@gmail.com

HIGHLAND HAMPSHIRE

KLUG FAMILY
939 Hazel St
Harlan, IA 51537
712-202-4461
klughihamp@tm.net

LARRY LUITJENS

2351 Mckinley Ave
Ashton, IA 51232
712-724-6360
eiluitjens@frontiernet.net

MHW FARMS

ROBERT & LILA MAHER
4283 Hwy 117 N
Colfax, IA 50054
515-674-3029

HAROLD MCILRATH

3529 Sanford Ave
Laurel, IA 50141
641-476-3405

ROGER NICHOLS

7739 W 117 S
Prairie City, IA 50228
515-994-2291

DOA HAMPS

JUSTIN O' BRIEN
20850 Lincoln Rd
West Union, IA 52175
563-422-7056
wobriendoaox@hotmail.com

RSO LIVESTOCK

ROGER & SHERRI OLSEN
3769 Little Wall Lake Rd
Story City, IA 50248
515-450-2097
rsoivestock@gmail.com

PEYTON BROS

CHASE & CAEL PEYTON
19353 170th Ave
Sumner, IA 50674
563-380-1016

PULLIN'S HAMPS

RONALD PULLIN
2185 W Shaulis Rd
Warterloo, IA 50701
319-233-2474
ron.marypullin@mchsi.com

TYLER & TRAVIS PULLIN

C/O DOUG PULLIN
24751 270th St
Adel, IA 50003
515-993-5684
pullins@msn.com

BLUE ACRE HAMPS

KARLA QUAM-LEO
3276 150th St
Jamaica, IA 50128
515049208922
karlamleo@gmail.com

RULE SHEEP

CINDI & TYSON RULE
PO BOX 71
Hawarden, IA 51023
712-422-0344
tysonrule@hotmail.com

SCHMITZ CLUB LAMBS

SSCOTT SCHMITZ
11467 W 76th St N
Rhodes, IA 50234
641-485-9860
ssschmitz@partnercom.net

MATT SWENKA

4614 Merced Street
Des Moines, IA 50310
612-280-4650

STEVE SWENKA

1785 170th Ave
Knoxville, IA 50138
563-428-4656

VANDERLINDEN LIVESTOCK

LES VANDERLINDEN
1785 170th Ave
Knoxville, IA 50138
641-891-5946
vanderlindenlivestock@gmail.com

RONALD WILLWERTH & FAMILY

1142 190th St
Webster City, IA 50595
515-543-8248



DIRECTORY CONTINUED

TAYLOR & LOGAN WILSON

214 S Goodrich
Colfax, IA 50054
515-238-8768

WOLF CLUB LAMBS

DAVE WOLF

957 E Ave
Scranton, IA 51462
712-830-3625
wolfpack@netins.net

VAN WERT CLUB LAMBS

1541 Raven Ave
Hampton, IA 50441
641-512-3024
vanwreck02@gmail.com

IDAHO

DIAMOND H LIVESTOCK

TERRY & CAROLYN HOWARD

7680 Palomino Lane
Emmett, ID 83617
208-371-1594
carolyn@dhlivestock.com

SRV HAMPS

JAMES HUMPHREY

607 East HWY 81
Burley, ID 83318
406-533-9807

jhumpy33@hotmail.com

JEWETT CLUB LAMBS

LARRY & DOLORES JEWETT

5670 N 18th E
Mountain Home, ID 83647
208-850-8717

jewettclublambs@live.com

JOHNSTON CLUB LAMBS

KATRINA JOHNSTON

4440 Sw 5th Ave
New Plymouth, ID 83655
208-412-7960

info@johnstonclublambs.com

TEWALT-WILSON LIVESTOCK

AUSTIN, DEAN, LISA & JOSH

TEWALT

930 West Columbia Rd
Meridian, ID 83642
208-861-0927
joshtewalt@clearwire.net

MAVENCAMP LIVESTOCK

305 Spring Cove Rd
Bliss, IA 83314
208-490-3126
mavencamplivestock@gmail.com

ILLINOIS

RICHARD ADAMS

6898 S 7000 W Rd
Chebanse, IL 60922
815-228-2903
radams1976@hotmail.com

GRANT & BRYCE BASTING

20645 N 825 East Rd
Carlock, IL 61725
309-376-5881

gbasting@verizon.net

HILLTOP STOCK FARM

CRAIG & MICHELLE BECKMIER

694 E 1100 North Rd
Morrisonville, IL 62546
217-827-6330

BEDINGER HAMPS

9743 N 1130 E
Catlin, IL 61817
217-260-2341
shpsht@sbcglobal.net

LUKE BENJAMIN

15950 West Kennedy Rd
Wilmington, IL 60481
708-738-3895
benjamin@iswan.net

KALEB BIFFAR

2018 Steppig Rd
Columbia, IL 62236
618-616-1824
carrcreekgenetics@msn.com

SHELBY & DALTON

BROWNING

30 Bethany Church Rd
Cypress, IL 62923
618-697-3458
slbrowning5@gmail.com

CHAPIN HAMPS

BILL CHAPIN

5680 E Reed Rd
Coal City, IL 60416
815-954-5129
wchapin@mccrone.com

RICHARD CROME FAMILY

4881 W State St
Charleston, IL 61920
217-549-2534
rkrome@eiu.edu

JOSEPH CLARKE

306 Busse Road
Marengo, IL 60152
815-545-8548
jclarke88@yahoo.com

RONALD COULTAS FAMILY

453 Winchester Glasgow Rd
Winchester, IL 62694
217-473-6637
ron@e-co-op.com

CRUIT SHEEP FARM

DUSTIN CRUIT

1090 N 1600 E
Taylorville, IL 62568
217-251-3644
dustin.cruit@il.usda.gov

JIM DAVIS

24001 N 1900 E
Odell, IL 60460
815-228-5967
jbdavis@maxwire.net

MICHAEL DAVIS

PO BOX 37
Polo, IL 61064
815-632-8861
mdaviscic@netscape.net

DEAKIN FAMILY FARMS

GREG DEAKIN

11191 E Cameron Rd
Cuba, IL 61427
309-338-3294
greg.deakin@otmail.com

ELLERBROCK CLUB LAMBS

BRAD & JEFF ELLERBROCK

13383 E 2000th St
Atkinson, IL 61235
574-967-3091
brad.ellerbrock@agrigold.com

WILLIAM & CONNIE FULTON

1508 State Rt 37
Kell, IL 62853
618-367-2364
fulton9504@gmail.com

RYANN GANN

11578 N Mt Morris Rd
Leaf River, IL 61047
815-979-3117
gannfarms@hotmail.com

HAILEY GEHLBACH

203 W Joseph St
Roanoke, IL 61561
309-360-2479
rgehlbach@hotmail.com

KALEIGH HALLERAN

6429 Old Red Bud Rd
Waterloo, IL 62298
618-939-4511
ahjh@htc.net

HANSON FARM

ED & TASHA HANSON

3034 N 700 E Rd
Clifton, IL 60927
815--383-2587
hanson.farms@yahoo.com

HARMS SHOW LAMBS

BARB AND LARRY HARMS

27638 E 2450 N Rd
Lexington, IL 61753
309-365-3381
hrmsshwlms@prairie.net

HORNER SHOW LAMBS

DICK HORNER

1119 E. 1515 Ave.
Vandalia, IL 62471
618-292-7627
hornershowlambs@hotmail.com

HUNTER HAMPS

JASON & NICK HUNTER

350 W Penn Ave
Roseville, IL 61473
309-337-0389

KENDRICK HAMPS

DAN KENDRICK

712 W 3rd St
Vermont, IL 61484
309-221-5568
kendrickdorset@yahoo.com

KORY KLEINERT

2873 N 1600 E
Clifton, IL 60927
815-383-0962

KLEINERT HAMPSHIRE

MIKE KLEINERT

2873 N 1600 E
Clifton, IL 60927
815-383-0962
mike@kleinerthampshires.com

TIM KUBATZKE

2490 E Rock Grove Rd
Orangeville, IL 61060
815-289-1217

DENNIS LOENSER

18391 E 800th St
Geneseo, IL 61254
309-714-1371

SARAH LUESCHOW

19520 S Port Rd
Elmwood, IL 61529
309-256-3115
slueschow@hotmail.com

JESSE LUESCHOW

19520 Southport Rd
Elmwood, IL 61529
309-256-3115
slueschow@dunlapcusd.net

SHILOH LUESCHOW

19520 Southport Rd
Elmwood, IL 61529
309-256-3115
slueschow@dunlapcusd.net

MEYER HAMPSHIRE

CHRIS MEYER

971 Arenzville Rd
Arenzville, IL 62611
217-473-3953
meghan_meyer@hotmail.com

AMANDA & MARLENE

MORAVEC

7313 Centerville Rd
Capron, IL 61012
815-243-0579
jrjamo5@gmail.com

MUMM HAMPSHIRE

Jason and Megan Mumm

49 CR 1300 N
White Heath, IL 61884
217-377-2073
meganmumm@hotmail.com

JOSH MUNSTERMAN

2111 N 1700 E Rd
Watseka, IL 60970
815-383-6311
munstermanjosh@hotmail.com

NICHOLS SHEEP FARM

CRUZ NICHOLS

26016 Moore Lane
Jerseyville, IL 62052
859-612-7175
slmoore93@gmail.com

GRESHER-FISHER SHOW STOCK

RANDI GRESHER & NICOLE FISHER

2111 Cedar Ave
Hanover Park, IL 60133
630-837-7227
gvessi@sbcglobal.net

NIEMEIER HAMPSHIRE

EDWARD NIEMEIER

4704 Blackburn Rd
Edwardsville, IL 62025
618-656-7273
keithniemeier@gmail.com

LUCAS PARR

33053 E Cr 700 N
Mason City, IL 62664
217-871-4555

PARR HAMPSHIRE

MARIE PARR

33425 E Cr 1000 N
Mason City, IL 62664
217-871-4555
rparr@frontier.net

PAUL HAMPSHIRE SHEEP FARM

STEVE & EVAN PAUL

20500 N 1800th Rd
Bushnell, IL 61422
309-255-2671
pauls@bushnell.net

CHARLES RAMSDELL
1622 Franklin Rd
Franklin Grove, IL 61031
815-456-2453

REEL CLUB LAMBS
SCOTT AND SHARON REEL
695 N 3859th Rd
Mendota, IL 61342
815-994-1998
reelclublambs@gmail.com

SHROCK HAMPSHIRE
MARK & BRADLEY SCHROCK
PO BOX 38
Congerville, IL 61729
309-369-7173
schrock12@hotmail.com

SUZANNA STORMS
859 Washburn Rd
Washburn, IL 61570
309-645-3052
suzanna.storms@gmail.com

CHAD SWALVE
4996 Prairie Road
Freeport, IL 61032
815-542-2152
coleswalve00@gmail.com

LILIAH & CONNER UNGER
6447 S 5000 W Rd
Chebanse, IL 60922
815-592-6456
nora@poolcoverpros.com

DAVID VAN CLEAVE
172 South St
Seneca, IL 61360
815-482-7484

JIM VAN CLEAVE
BOX 478
Seneca, IL 61360
815-357-8196

JON VAN DYKE
544 Eagle Rd
Louisville, IL 62858
618-686-4393
vandyke@wabash.net

CLEAR VIEW FARM
JOE AND SCOTT VIVIAN
1796 Lee Center Road
Amboy, IL 61310
815-632-7254
swisselectric12@gmail.com

WOLLERMAN SHOW LAMBS
AUSTIN WOLLERMAN
2318 N 400 St
Bingham, IL 62011
618-367-3174
awollerman@gmail.com

WRIGHT FAMILY FARMS
16732 645 E St.
Sheffield, IL 61361
815-303-3608

INDIANA

SCOTT ALEXANDER
1282 N 60 S
Winamac, IN 46996
574-595-5480
scottal282@gmail.com

EVAN & NASH ARTHUR
1162 E 300 S
Greenfield, IN 46140
317-696-7705
lloyd@arthursinc.com

SHANE ASHTON & FAMILY
484 E St Rd 28
Alexandria, IN 46001
317-716-3371
sashton@carterlumber.com

JERRY BARNETT
7247 S Us Hwy 421
Kirklin, IN 46050-9778
765-279-8139
jlbarnetthamps@att.net

SAND HILL HAMPSHIRE
WARNE & DENNISE BELDEN
5061 N US Hwy 231
Rensselaer, IN 47978
219-869-1851
wbelden@infarmbureau.org

DAVID CALDWELL
3006 W CR 400 N
Connersville, IN 47331
765-825-2427
dscaldwell@alummi.purdue.edu

SPENCER CARSON
12310 E 266th St
Arcadia, IN 46030
317-946-4450
spencercarson38@gmail.com

CAUDILL FARM
MARANDA & RYAN CAUDILL
11931 E CT Rd 800 N
Hope, IN 47246
317-508-9276
mwestroberts@hotmail.com

MAX COURTNEY
7436 S 300 W
Shelbyville, IN 46176
812-343-3710

FRED CURREY FAMILY
7406 N 425 E
Alexandria, IN 46001
765-623-8806
curreyclublambs@zigwireless.com

DANIELS CLUB LAMBS
GARY DANIELS
4924 E Division Rd
Portland, IN 47371
260-726-8639
bldaniels@bright.net

MEGAN DOWNING
4491 S 460 W
Vallonia, IN 47281
317-373-2828
mdown1675@gmail.com

COLLIN & ELI DOWNING
4491 S 460 W
Vallonia, IN 47281
317-373-2828
mdown1675@gmail.com

RON & DWIGHT DUZAN
5875 N Red Oak Dr
Greenfield, IN 46140
317-326-4166
dwightandron@aol.com

AMANDA & JAKE FELLER
4290 W 650 N
Crawfordsville, IN 47933
765-275-2211
fellers@wabash.edu

JERRY FLANDERS
2355 Pleasant
Noblesville, IN 46060
317-773-3232
vip@vipanimalcare.com

GRANT & GARRETT FRIESEN
8398 E 450 S
Carthage, IN 46115
317-586-1728
kefriesen@yahoo.com

MORGAN & MADISON HAUGER
7287 W 50 N
Connersville, IN 47331
765-561-1856
imhauger@hotmail.com

TOMMY HOBBS
11302 N Bob Wolfe Rd
Oaktown, IN 47561
812-881-0160
tommyhobbs5@gmail.com

SAVANNAH HUBBARD
5570 N SR 7
Madison, IN 47250
812-265-5144
mmahoneyhubbard@yahoo.com

AARON JENNINGS
620 W 625 S
Lafayette, IN 47909
979-204-7952
hiredhandsouthdowns@hotmail.com

BLACK MAPLE FARM
MICHAEL & LACEY JONES
3924 N 450 E
Rochester, IN 46975
574-721-2159
mjones@argos.k12.in.us

RYAN, ALLISON & MEGAN KELLY
23725 CR 38
Goshen, IN 46526
574-361-0477
bakkelly@hotmail.com

TIM KENDALL
1277 S 600 W
Shirley, IN 47384
765-620-7579
timkendall7579@icloud.com

ADVANCING FARM & FAMILY
ALAN & DAWN KESSLER
3794 S 550 W
La Porte, IN 46350
219-898-5026
adufarm@aol.com

D & D KIRTS & FAMILY
1516 E CO RD 350 N
Danville, IN 46122
317-410-9075
dixiekirts@aol.com

VIKING LAMB LLC
TERRY KNUDSON
Viking Lamb Llc
1678 E Freepport Rd
Morristown, IN 46161
812-871-5700
vikinglamb@iquest.net

JEAN LAHRMAN
13010 Wappes RD
Churbusco, IN 46723
260-433-5124

LAMBRIGHT CLUB LAMPS
KEITH LAMBRIGHT
2210 N 735 W
Shipshewana, IN 46565
260-336-6009
brianlambright@hotmail.com

B & L CLUB LAMBS
THAD LEININGER
7252 S 550 E
Pierceton, IN 46562
574-551-1919
thadleininger@icloud.com

COLTON, CAMERSON & CAILEY MARKLEY
4315 17 B RD
Tippecanoe, IN 46570
574-952-6572
brent.markley@gmail.com

4 M FARMS
JUSTIN & APRIL MATTOX
2377 E 600 N
Greenfield, IN 46140
317-538-5240
jmattox50@yahoo.com

MCTAGGART'S HAMPSHIRE
ROBERT MCTAGGART FAMILY
10509 E 500 S
Otterbein, IN 47970
765-490-3298

KYLA, KADE & KINSEY MENNEN
7123 E CR 250 S
Walton, IN 46994
765-437-6020
lisamennen@aol.com

MENNEN CLUB LAMBS
ALVIN MENNEN & FAMILY
3188 E CO Rd 500 S
Walton, IN 46994
574-722-2740
mennenclublambs@aol.com

JOHN MROZINSKI
6992 E 700 N
New Carlisle, IN 46552
574-532-0792
jmrozinski@yownofnewcarlisle.com

DAN & KRIS MYERS
833 E 350 S
Logansport, IN 46947
574-355-6840
dkmeyers1230@comcast.net

TRIPLE P HAMPSHIRE
RICHARD PARKER & FAMILY
1761 E St Rd 234
Fortville, IN 46040-9725
317-326-2821
raparker@hrtc.net

CHARLES PASTON
959 Marshall Rd
Rockville, IN 47872
765-592-3954
sherripaxton@sbcglobal.net

PEARSON HAMPSHIRE
MORRIS PEARSON
1495 W 281 St
Sheridan, IN 46069
317-496-0914
cfulwider@sbcglobal.net

PERRY CLUB LAMBS
DANIEL PERRY
10253 S 400W 900
Montpelier, IN 47359
765-348-7806
rockbottom@onlyinternet.net

DIRECTORY CONTINUED

PLANK SHEEP CO

TAYLOR PLANK
5184 E SR 218
Walton, IN 46994
765-437-6097
plankt@delphik12.in.us

KELVIN PLUMER & FAMILY

6451 N 900 E
Van Buren, IN 46991
765-251-1292
kjplumer@embarqmail.com

PLUMMER FARMS

LEVI & MAKAYLA PLUMMER
200 N 400 W
Bargersville, IN 46106
317-422-8104
plumhampshires@gmail.com

STANLEY POE & SONS

2213 W St Rd 144
Franklin, IN 46131
317-600-3252
poehamps@yahoo.com

POLING SHOW SHEEP

WHITNEY & NICHOLAS POLING
7259 N 400 E
Union City, IN 47390
765-748-4818
polingshowsheep@gmail.com

CALE & TESSA ROBERTSON

58 E 375 N
Reynolds, IN 47980
765-412-3697
joshandroxie@gmail.com

MARK & KARLA ROESKE

6882 S CR 400 E
Walton, IN 46994
574-721-0033
roeske@icloud.com

RUDICEL CLUB LAMBS

CRAIG RUDICEL
8720 E 900 N
Twelve Mile, IN 46988
574-721-7308
herudicel@yahoo.com

BJ & KYLE RULE & FAMILY

5111 W 300 S
Lafayette, IN 47909
317-345-4600
rule_12@hotmail.com

SHAFER SHOW STOCK

TERRY SHAFER
PO BOX 13
Plainville, IN 47568
812-444-9071
trryshfr@yahoo.com

JASPER & IRELAND SHUCK

8330 S 300 W
Geneva, IN 46740
765-438-1804
jasonshuck.family@gmail.com

KAITLYN & BRETT SLACK

13060 N Meridian Rd
North Manchester, IN 46962
574-339-9073
verhaegedorsets@aol.com

TOM SLACK

1022 W 1300 N
Manchester, IN 46962
260-982-8714
lvmysheep@aol.com

JOHN SLENTZ

5870 CTY RD 36
Butler, IN 46721
260-908-4177
jrslentz@hotmail.com

ROBERT SLINGER III

146 E 900 S
Warren, IN 46792
260-375-3758

THOMAS SMALL FAMILY

6862 South Co Rd 400 E
Walton, IN 46994
574-626-2993
tljas@northcc.net

WAYNE SNIDER

66399 Cr 19
Goshen, IN 46526
574-535-5748

MACY SWOVELAND

7608 W 400 N
Farmland, IN 47340
675-578-1282
swovelandmacy@yahoo.com

RON & KARLA TERRELL

1564 W Co Rd 200 N
New Castle, IN 47362
765-256-2208
rterrell51@yahoo.com

SILVER DOLLAR FARMS

TAD THOMPSON
1564 W Co Rd 200 N
New Castle, IN 47362
765-891-8442
thompson.tad@gmail.com

MARCIA TRUSTY FAMILY

PARTNERSHIP
4426 E Dayhuff Rd
Mooresville, IN 46158
317-831-8426
marciatrusty@yahoo.com

WILLIAM VAN METER

8489 N West Shafer
Monticello, IN 47960
574-278-7340

SILVERCREEK FARMS

MICHELLE & BILLY WADE
11956 W 700 S
Jamestown, IN 46147
503-931-6827
wadewesthamps@yahoo.com

CAMDEN YAKE & LUNDREY

9438 N 100 E
Washington, IN 47501

HILL/HOEING SHOW STOCK

1826 East CO Road 100 South 6
Greenburg, IN 47240
812-593-4454

BRISTOL RIDGE HAMPSHIRE

PO BOX 234, 107 S Hill St
Summitville, IN 46070
675-376-9205
kjeffries10@yahoo.com

KANSAS

ABELDT CLUB LAMBS

JOE, JOSH & AUSTIN ABELDT
1360 200 Ave
Hope, KS 67451
785-341-3559
jabeldt@hotmail.com

STACEY DUBOIS

39290 W 295th St
Paola, KS 66071
913-294-8460
bsdubois@earthlink.net

EBERT SHEEP FARM

JEFF EBERT
10015 Flush Rd
St George, KS 66535
785-458-9174
ebertj@wamego.net

WARREN & PAM FINDER

14715 W Maple Grove Rd
Kingman, KS 67068
620-532-1327
finderhampshires@gmail.com

CHRIS FLOYD

6505 N Big Bow Grade
Johnson, KS 67855
620-952-0310
cdfloyd@yahoo.com

PAUL GALLE

2259 Cheyenne Rd
Moundridge, KS 67107
620-245-4180

HEWLETT CLUB LAMBS

ED HEWLETT
4983 E Hwy 160
Independence, KS 67301
620-331-1475
ech@terraworld.net

HOBBS CLUB LAMBS

JOE & MEGAN HOBBS
7428 Nw 12th St
Newton, KS 67114
316-858-5050
megan.hobbs@cargill.com

HOCKMAN FARMS

TY HOCKMAN
610 N 8th
Hill City, KS 67642
785-421-7109
tyrh@hotmail.com

DREIER-LAROSH CLUB LAMBS

MICHAEL LAROSH
9800 Knox Dr
Overland Park, KS 66212
913-526-8160
mdlarosh@gmail.com

MORGAN, SAMANTHA &

RYAN MCCLURE

5490 W 76th Ave
Manhattan, KS 66503
785-477-2494
gmccclure@ksu.edu

KASHEN & BRECKEN NELSON

PO Box 36
Tribune, KS 67879
620-367-8944
nycolenelson@hotmail.com

TRAVIS, TYLER & ALICIA

NELSEN
7234 Tuttle Creek Blvd
Manhattan, KS 66503
785-776-1407
jnelsen@ksu.edu

MEGAN NEWLAND

2793 Clark Rd
Richmond, KS 66080
785-418-3168
newland_hamps@yahoo.com

NICK & LACEY

NOTERMAN
PO Box 787
Satanta, KS 67877
620-397-1927
noterman@pld.co

GILLMORE-DAVISON

T GILLMORE & P DAVISON
6751 N Sheridan
Wichita, KS 67204
316075501663
phyldavison@gmail.com

BRAYDEN & KASEN

ROBINSON
9705 N Lakeside Rd
Garden City, KS 67846
620-338-7041

DUSTIN & REBECCA

ROOKSTOOL
9377 Broderick
Wamego, KS 66547
785-456-4096

attorney@bluevalley.net

BRANDON, DEREK & LAKIN STAHEL

6780 E 149th St
Overbrook, KS 66524
785-207-1386
curtisstahel@gmail.com

TWO OF A KIND FARMS

ERIC STRECKER
836NW River Valley Rd
Towanda, KS 67144
316-305-5379
ericbmf316@yahoo.com

RYAN STRUNK

8711 SE 12th St
Newton, KS 67114
316-833-0887
carolynstrunk@ghhwesleymc.com

LOGAN & JANSYN

VAN HORN
2002 J Rd
Garfield, KS 67529
620-569-2413
vanhorn@gbta.net

TED VAN HORN

2002 J Rd
Garfield, KS 67529
620-569-2413
vanhorn@gbta.net

HAYS BROTHERS

3427 Linn Rd
Perry, KS 66073
785-438-0339
hays.m@hotmail.com

KENTUCKY

CHARLIE & HEIDI CASTLE

5000 Boonesboro Rd
Winchester, KY 40391
859-556-0111

TERRADISE FARM

CAMPBELL, CORBIN & CLARK
COYLE FAMILY
1374 Quirks Run Road
Danville, KY 40422
859-583-0816
1503@medicineshoppe.com

DOUBLE F CLUB LAMBS

STEFAN & ENDRE FINK
1590 Boonesboro Rd
Winchester, KY 40391
859-771-8441
doubleflamb@gmail.com

WILLIAM GINN

2368 Palmyra Rd
Bedford, KY 40006
502-663-1233
ginnfarms@yahoo.com

HIGHBRIDGE HAMPSHIRE

JOSH HACK
289 Crab Orchard Rd
Frankfort, KY 40601
502-803-0414
wonzinner@yahoo.com

RYAN HALLIGAN

9375 Mount Sterling Rd
Winchester, KY 40391
502-320-8655
ryan.c.halligan@gmail.com

HANCOCK HAMPSHIRE

MIKE HAMCOCK
1255 Estesburg Rd
Eubank, KY 42567
606-379-6575
mike100@windstream.net

METZGER'S HAMPSHIRE

BRUCE METZGER
3965 Old Frankfort Pike
Versailles, KY 40383
859-846-4721
brmetzger444@gmail.com

TAYLOR STOCK FARM

TAYLOR FAMILY
721 Jayna Lane
Salem, KY 42078
270-988-4123
taylorstockfarm@tds.net

WALKER & CAMDYN TINGLE

2368 Palmyra Rd
Bedford, KY 40006
502-221-0641
ginn_tingle@yahoo.com

UNIVERSITY OF KENTUCKY

1171 Midway Rd
Versailles, KY 40383
859-873-6587
frank.berry@uky.edu

ANTIQUITY RIDGE FARM

SCOTT VAN SICKLE
535 Duncan Lane
Auburn, KY 42206
270-792-7173
antiquityridgefarm@gmail.com

VAN SICKLE HAMPSHIRE

284 Cabin Creek Rd
Winchester, KY 40391
859-744-8747
rvansickle@bellsouth.net

HALEIGH & TJ YAZELL

1267 Millersburg Rd
Paris, KY 40361
859-340-2747
lyazell2@roadrunner.com

WETHER OR NOT

CLUBLAMBS
289 Crab Orchard Rd
Frankfort, KY 40601
502-803-0414
jzinner@franklin.k12.ky.us

LOUISIANA

ULAND & SONIA GUIDRY
1474 HWY 384
Lake Charles, LA 70607
337-370-4142
sguidry@camtel.net

MASSACHUSETTES

FOUNDRY ACRES HAMPSHIRE

C DONALD CALL
964 Mohawk Trail
Shelburne Falls, MA 01370
413-625-2436
doonyc@netscape.net

SANDRA HUTCHINGS

41 Steven St
Hanson, MA 2341
781-290-6360
moonlightacre@hotmail.com

KATELYN PARSONS

121 Mill Valley Rd
Hadley, MA 01035
413-387-2726
katelyn.parsons@okstate.edu

MARYLAND

CORINNE DARRAGH

8423 Ramsburg Rd
Thurmont, MD 21788
240-271-7091
corinne.ransom@hotmail.com

HALL CLUB LAMBS

JOHN HALL
23315 Chestertown Rd
Chestertown, MD 21620
410-708-8781
hallclublambs@gmail.com

STEVE & TYLER MAJCHR-ZAK

3745 Bradley Rd
Federsburg, MD 21632
410-463-5476
steve@hoffirr.com

MAINE

BIRCH HILL HAMPSHIRE

M D ANDREW
64 Flaggy Meadow Rd
Gorham, ME 04038
207-318-9248
michael.andrew@unh.edu

RACHEL CARTER

417 Main St
Richmond, ME 04357
207-512-6672
racarter1025@gmail.com

MARIE SMITH

162 Mighty St
Gorham, ME 04038
207-839-2227
smithmightyst@wmconnect.com

MICHIGAN

ANGEL HAMPSHIRE

DOUG & MOLLY ANGEL
62020 MT Vernon
Washington, MI 48094
248-652-7256
dangel123@comcast.net

BUCKHAM FARMS

THOMAS BUCKHAM
6508 W R Ave
Schoolcraft, MI 49087
buckhamt@gmail.com

GORDENEER HAMPSHIRE

GORDENEER FAMILY
607 N Ionia Rd
Vermontville, MI 49096
517-726-1309
tgordeneer@yahoo.com

ELECTRA FARM

EARL HELLER
20640 Sager Rd
Chelsea, MI 48118
734-475-2681

JUDY MOORE

11989 Hinman Rd
Eagle, MI 48822
517-626-6012
jmoore@2farmconnect.net

JUDY RUGGLES

15839 Floating Bridge Rd
Three Rivers, MI 49093
269-718-9683
four_r_ranch@juno.com

WILLOW CREEK SHOW LAMBS

JIM VANDERKOLK
3679 36th St
Hamilton, MI 49419
205-495-0805
jkol4@yahoo.com

LÉLAND WHEATON

2297 W Vermontville Hwy
Charlotte, MI 48813
517-543-7086
brant.wheaton@gmail.com

MINNESOTA

BRUCE BAKKEN & FAMILY

29557 St Hwy 13
Hartland, MN 56042
507-845-2113
bjbakken54@gmail.com

BOBENDRIER BOYS

BOBENDRIER FAMILY
1351 Hwy 75
Pipestone, MN 56164
507-215-0334
shebob@svtv.com

BOBENDRIER HAMPSHIRE

1607 90th Ave
Pipestone, MN 56164
507-825-4072
bobendrier@svtv.com

KENNETH BOYER

5300 Hwy 63 S
Rochester, MN 55904
507-282-3776
frigidfold@aol.com

DALE CARTER FAMILY

26708 Cr 10
Starbuck, MN 56381
320-424-2957
carteracres@ucinet.net

PINE LAWN FARM

MIKE CASKEY FAMILY
1222 171st St
Holland, MN 56139
507-347-3229
mccaskey@woodstocktel.net

MARK CHRISTENSEN FAMILY

1561 250th Ave
Tyler, MN 56178
507-828-9162
mcchris@frontiernet.net

PROMISE KEPT FARM

TIM COSS & FAMILY
207 E Water St
Cannon Falls, MN 55009
507-263-4974
timkcoss@frontier.net

DEE BROTHERS, LLC

GRAHAM & EVAN DEE
27285 Galaxre Ave
Farmington, MN 55024
612-207-1907
graham@deebrothers.com

RANDY DOMBEK FAMILY

2422 290th St
Ivanhoe, MN 56142
507-530-5938
rdombek@hotmail.com

DON & DEB DREWRY & FAMILY

3105 250 St E
Farmington, MN 55024
651-894-3466
don.drewry@frontier.com

EGGINK'S HAMPSHIRE

RODNEY & RYAN EGGINK
8291 185th Ave
Becker, MN 55308
763-234-7419

ROBERT FINNEGARD & FAMILY

19563 Cty Rd 11
Spring Grove, MN 55974
507-498-5798
bfinn@springgrove.coop

THOMAS FRAME & SONS

16465 Paul Ave
Worthington, MN 56187
507-376-4928
aframe002@frontiernet.net

FRANZ FARMS

TODD & M K FRANZ
34153 520th Ave
Bingham Lake, MN 56118
507-822-1671
mkfranz@frontiernet.net

HARVEY FARMS

MIKE HARVEY
28751 CO RD 33
Lake City, MN 55041
651-212-1298
mharvey@goodhue.k12.mn.us

HERRIG FAMILY HAMPSHIRE

677 State Hwy 267
Slayton, MN 56172
507-836-6311
jakeherrig@yahoo.com

GOLDEN LANE FARMS

GLEN HOFF FAMILY
1713 110th Ave
Perley, MN 56574
701-490-1012
ghoff@loretel.net

JOSH KIRCHENBAUER

8166 72nd St SE
Clear Lake, MN 55319
320-292-6598
joshua.kirchenbauer@gmail.com



DIRECTORY CONTINUED

JAMES KIRCHENBAUER

8166 72nd St SE
Clear Lake, MN 55319
320-290-4879
james.kirchenbauer@gmail.com

ROBERT KOEHLER & FAMILY

1712 111th St
Slayton, MN 56172
507-760-0949
koehl1009@umn.edu

GARY & DEBI LANGERUD

11711 210th St N
Hawley, MN 56549
218-850-0230

TIMBERLAKE HAMPS

JUSTIN & MARNIE LARSEN
34710 CR 120
Frazee, MN 56544
218-841-3939
hunthebest1@gmail.com

REID MERRILL

2163 250th St
Canby, MN 56220
507-829-4319

JEWEL LANE FARM

FOSTER MOONEY
9710 Jewel Lane
Chisago City, MN 55013
651-257-5079
foster.mooney5079@gmail.com

OAK MEADOW SHEEP

BRUCE NICKEL
30799 Csah 34
Litchfield, MN 55355
320-693-2428
benickel@hotmail.com

TRIPLE D HAMPS

DYLAN, DANIELLE & DEREK PRATT
20251 400th St
Clarissa, MN 56440
320-219-3023
ballroom@eaglevalleytel.net

JERRY QUAM & FAMILY

8533 Co 30 Blvd
Wanamingo, MN 55983
507-251-2650
rex.quam@riverland.edu

NORTHERN STARR LIVESTOCK

JEFF REPASKY
9426 Jacobsen Trail
Lonsdale, MN 55046
612-282-7782
nstarrlvk5@aol.com

RCR SHOW LAMBS

DAVID RESCH
5714 100th St
Glencoe, MN 55336
952-449-1793
rcrshowlambs@hotmail.com

GENE & MARCI SANFORD

12529 Canby Ave
Faribault, MN 55021
507-645-4989
mgsanford99@gmail.com

RAM'N ACRES

RODNEY SCHELLER
3646 County Rd 37 NE
Monticello, MN 55362
612-386-7479
rodscheller@gmail.com

AUSTIN SCHIEFELBEIN

35359 732 Ave
Kimball, MN 55353
320-250-1228
rgaaab@meltel.net

SCHULTZ'S SHEEP

CHARLIE SCHULTZ
13503 Hwy 28
Swanville, MN 56382
320-630-4865
cjschultz@wisper-wireless.com

SCOTT SIK

74777 360th Ave
Round Lake, MN 56167
507-360-4865
scottsik@yahoo.com

TRISTAN, FABRIEL & MICAH THOMPSON

897 137th Ave
Spicer, MN 56288
320-354-3755
jmmeyer89@hotmail.com

UNIVERSITY OF MINNESOTA

225 E Haecker Hall
St Paul, MN 55108
612-624-7497
rozeboom@umn.edu

WAMBEAM HAMPSHIRE

27707 880th Ave
Austin, MN 55912
507-437-1506
dwambeam@smig.net

WANNARKA HAMPSHIRE

STEVE WANNARKA
2973 95th St
Blue Earth, MN 56013
507-464-3431

HEATH WILLIAMS

12191 431st Ave
Mabel, MN 55954
507-450-7107
williamsshowlambs@gmail.com

MERCEDES LADIES

MERCEDES ROWLAND LYNN
1462 180th St
Perley, MN 56574
701-361-8530
mercedesl_09@hotmail.com

DEW DROP FARMS

38118 510th Ave
New York Mills, MN 56567
218-639-8484
dewdrop@lakesplus.com

CEDAR CREEK HAMPS

2231 Robich Rd
Ely, MN 55731
515-229-7728
hampshires.jb@gmail.com

DK LIVESTOCK COMPANY

KAYLEE, KATHREIN & DEREK
1901 Private Dr Apt 202
Crookston, MN 56716
320-219-8942
dklivestockco@gmail.com

MISSOURI

BAUMANN FAMILY

14063 St Rt Dd
Savannah, MO 64485
816-324-4386
gary213@centurytel.net

CHECKERIDGE

LELAND BROWNING
54 Se Co Rd 16335
Appleton City, MO 64724
660-924-1090
checkeridge@embarqmail.com

EMALEIGH & ABBY CLONTS

10236 Union Drive
Stark City, MO 64866
417-592-0697
clontsfarms@yahoo.com

JERRY & BARBARA CREASON

7322 SE Apache Rd
Cowgill, MO 64637
660-255-4305
jerrywcreason@gmail.com

E6 FARMS

LIBBY & ALEX ENDICOTT
701 E Forrest
Gallatin, MO 64640
660-663-4224
aliciaendicott@yahoo.com

KASEY & ABILENE GATSON

31310 Bluejay Rd
Vandalia, MO 63382
573-594-3247
gatsonfarms@gmail.com

HAND HAMPSHIRE

HAND FAMILY
12918 Maness Rd
De Soto, MO 63020
314-303-1141
lwhand5@yahoo.com

ADAM & TRENA HARKER

12402 Valley View Rd
Mountain Grove, MO 65711
417-254-1731
aharker22@hotmail.com

RAY-KAY FARMS

ZACHARY HAYTER
459 E 550th Rd
Walnut Grove, MO 65770
417-788-2637
raykay70-72@hotmail.com

DEAN & CONNIE HOUGHTON

5555 SW Peak Rd
Polo, MO 64671
816-863-0043
houghtongd@gmail.com

UPTOWN HAMPS

MATT & KATE LAMBERT
22225 Glade Rd
Laclede, MO 64651
660-541-0468
uptownfarms@hotmail.com

LANE RANCH

BRUCE & JILL LANE
RR 3 BOX 175
Lancaster, MO 63548
660-457-3116
lanen@missouri.edu

RODGER & THEILA LUETJEN

1110 South Fowler
Cole Camp, MO 65325
660-221-4921
rodgerluetjen@embarqmail.com

STEVEN & NANCY MCCULLY

18297 Boulder Dr
Harris, MO 64645
660-292-1595
nrmccully@smithfield.com

PLAZA HAMPS

BRAD PAYNE
13406 8 Rt Mm Southeast
Agency, MO 64401
630-688-2583
brad.payne65@gmail.com

SCHUTTER CLUB LAMBS

DAVID SCHUTTER
2500 State Route P
Kirksville, MO 63501
660-988-0201
schutter@truman.edu

SPOONSTER HAMPS

BOBBY SPOONSTER
PO BOX 23
Eolia, MO 63344
636-359-5487
bspoonster@bgschool.k12.mo.us

ROY WAGGONER, JR

18217 Hink School Ave
Cole Camp, MO 65325
660-221-3388
jwagg30@yahoo.com

WRIGHTS ROCKY ACRES

DON WRIGHT FAMILY
25250 St Hwy 413
Galena, MO 65656
417-437-7381
wrightsrockyacres@hotmail.com

TRIPLE Z HAMPSHIRE

KAYLYNN & WYATT ZIMMESCHIED
27636 Hwy 52
Cole Camp, MO 65325
660-281-3447
mmzimmerschied@gmail.com

3-D/RILEY HAMPSHIRE

12717 Apple Rd
Carthage, MO 64836
417-359-6724
dillardjh@gmail.com

MISSISSIPPI

GILLMORE LIVESTOCK

BRAD, AMY HANNAH &
MEREDITH GILLMORE
160 CR 522
Corinth, MS 38834
662-286-5171
bradgillmore@belsouth.net

MONTANA

TERESA CULLIS

44997 Beaver Dr
Ronan, MT 59864
406-207-4619

ENGLERT HAMPSHIRE

EDNA ENGLERT
114 Bridger Fromberg Rd
Bridger, MT 59014
406-662-3236

GIBBS HAMPSHIRE

PATRICK & BEVERLY GIBBS
513 Van Norman RD
Jordan, MT 59337
406-557-2852
pbgibbs@midrivers.com

DAVID GRABER

461 6th Lane NE
Fair Field, MT 59436-9104
406-467-2894

RITA GRABOFSKY
390 GR Lane
Chinook, MT 59523
406-357-3550
grabit@itstriangle.com

MOOSE SPRINGS FARM
AMY GRASSEY
PO BOX 775
Stevensville, MT 59870
406-459-2321
abgrassey@gmail.com

HARTLESS RANCH 2
CHERI HARTLESS
1235 Moss Rock Ct
Corvallis, MT 59828
406-360-3041
chartless902@gmail.com

CRAZY H CLUB LAMBS
JASON HEEG
PO Box 217
Shepherd, MT 59079
406-855-1478
crazyhclams@outlook.com

7 MILE HAMPSHIRE
LEANNE HOAGLAND
PO BOX 95
Glendive, MT 59330
406-939-1263
bsshires@midrivers.com

LONGVIEW FARM
SHARON JOHNSON
2691 Hunters Ln
Stevensville, MT 59870
406-396-0618
smmjohanson@cybernet1.com

WILLOUGHBY CREEK FARM
ALAN & TERRI LACKEY
517 S Sunset Bench RD
Stevensville MT 59870
406-777-2492
cowgirlup0505@gmail.com

NORTH CAROLINA

AUSTIN & JESSICA ARMSTRONG
1140 Oakwood Dr
Walnut Cove, NC 27052
336-529-4084
armstrongartesianfarm@gmail.com

BAME FARMS
ANDREW BAME
1525 Patterson Road
Salisbury, NC 28147
704-857-5726
bamefarms@gmail.com

LAZY 5 RANCH
HENRY & BEVERLY HAMPTON
14235 Hwy 801
Mt Ulla, NC 28125
704-819-7546
champton421@aol.com

JIMMY REBER
2220 Graham RD
Mount Ulla, NC 28125
704-787-5599
twinoaksequine@att.net

NORTH DAKOTA

TRAVIS BELL
12787 Co Rd 19A
Fordville, ND 58231
701-360-1597
tbell@polarcomm.com

DC HAMPS
DENNIS CARTER
6928 93rd St NE
Rock Lake, ND 58365-9593
701-370-8225

DECKERT HAMPSHIRE
DUANE DECKERT
3800 38th St SE
Minot, ND 58701
701-721-6054
deckertflocks@hotmail.com

EPPELRY HAMPSHIRE
JOSHUA EPPELRY
11784 64th St SW
New England, ND 58647
701-238-6287
jepps72@hotmail.com

BONANZAVILLE FARMS
WES LIMESAND
3621 113th Ave SE
Valley City, ND 58072
701-799-1349
w.limesand@bektel.com

NORTH DAKOTA STATE UNIV
ANIMAL SCIENCE DEPARTMENT
Hultz Hall
 Fargo, ND 58108
701-356-3295
steven.e.anderson@ndsu.edu

ROSE LAWN LEGACY
BURTON & PATTIE PFLIGER
3600 80th St SE
Bismarck ND 58504
701-220-2756
bpfarm@hotmail.com

JAMES VALLEY STOCK FARM
NATHAN & KIMBERLY ROBBINS
7377 County Rd 60
Lamoure, ND 58458
701-883-4212
jamesvalleystockfarm@hotmail.com

KLEVEN HAMPS
206 2nd St NE
Hettinger, ND 58639
701-220-8170
burchlivestock@gmail.com

NEBRASKA

BURCH LIVESTOCK
KOLBY & MICKY BURCH
2935 Little Salt RD
Seward, NE 68434
307-247-3043
burchlivestock@gmail.com

COADY FAMILY
1022 County Rd R
Mead, NE 68041
402-277-6246
mjrc3@windstream.net

COAN HAMPSHIRE SHEEP
KEVIN COAN
PO BOX 230, 356 13th St
Platte Center, NE 68653
402-276-1031
megcoan22@gmail.com

TOM GILLMORE
2133 SW 18th St
Lincoln, NE 68522
402-477-9080
tgillmore@neb.rr.com

KENT HAMBLETON
55822 N Ember Rd
Fullerton, NE 68638
308-550-0418
kathyhambleton@hotmail.com

GUS HELLER FAMILY
84187 571 St Ave
Pilger, NE 68768
402-369-1928
gheller25@hotmail.com

DALLAS HENRY
1671 Road 2100
Blue Hill, NE 68930
269-953-4609

HIGH HILL FARM
JERRY HENSLER
20304 High Hill Ln
Arlington, NE 68002
402-650-7797
jah39@hotmail.com

DIAMOND C FARMS
TRACY HOFFMAN-IDEUS
4453 E Cedar RD
Cortland, NE 68331
402-223-9754
tjhoffmanideus@diodecom.com

HOLTZEN HAMPS
MARVIN HOLTZEN
PO BOX 175
Davenport, NE 68335
402-364-2163

KJELDGAARD FAMILY
4400 Co Rd I J
Tekamah, NE 68061
402-374-1175
almarmy@microlnk.com

AMY MESSING
1756 Rd I
Rogers, NE 68659
402-352-3321
mess3rac@yahoo.com

RACHEL MESSING
1756 Rd I
Rogers, NE 68659
402-352-3321
mess3rac@yahoo.com

JONATHAN & DELINA MOHRMAN
825 RD 5400
Deshler, NE 68340
402-366-8669
barmann1@gpcom.net

JUSTIN NATHAN
PO Box 177
Hoskins, NE 68740
402-565-4860
justinnathan22@live.com

STEINMEYER HAMPSHIRE
1963 9th Rd
Wisner, NE 68791
402-380-0959

DLT FAMILY FARMS
DAVID TAYOR
9770 West Hallam Rd
Hallam, NE 68368
402-471-6867
dltfarms6@yahoo.com

TAYLOR LIVESTOCK
MARK & CHERYL TAYLOR
1450 S H St
Broken Bow, NE 68822
308-870-2211
mgthunter@yahoo.com

TVRDY FARMS
JOHN TVRDY
14100 Branched Oak Rd
Waverly, NE 68462
402-786-3289

5 DIAMONDS CLUB LAMBS
DONOVAN & MARIE WALSH
5108 Ave H Place
Kearney, NE 68847
308-224-8000
5diamondsclublambs@charter.net

MAIRE WALSH
5108 Ave H Place
Kearney, NE 68847
308-224-8000
donovan.walsh@bosselman.com

CRYSTAL CREEK LIVESTOCK
304 Sycamore
Hadar, NE 68701
402-920-0480
dkoepke@agrexinc.com

WEG & 1-80 FLOCKS
1012 Rd 14
Geneva, NE 68361
402-540-7884

AD RANCH
25446 280th Ave
Columbus, NE 68601
402-606-6144
adranch10@gmail.com

NEW HAMPSHIRE

GLENN AND JUNE BROOKS
97 Spencer Rd
Whitefield, NH 03598
603-837-2382
brooks_hamps@yahoo.com

BIRCH BRANCH FARM
AMELIA MOORE
75 Fox Garrison Rd
Lee, NH 03861
603-969-7947
moore.amelia92@gmail.com

TAYLOR MORRILL
118 Range Rd
Belmont, NH 03220
603-528-5838
maplecreekshpfrm@gmail.com

ERIC POIRE
93 Federal St
Belmont, NH 03220
603-528-5838
maplecreekshpfrm@gmail.com

NEW JERSEY

CHRISTY FARM
CATHERINE CHRISTY
38 42nd St
Whitehouse Station, NJ 8889
908-823-1605
christyfarm@embarqmail.com

KNIFFEN MAZAKAS HAMSHIRE
606 Main St
Asbury, NJ 8802
908-797-6657
kniffenmazakashamps@gmail.com

STONEY ROAD FARM
SUSAN MILLER
101 Old Clinton Rd
Flemington, NJ 8822
908-334-3396
foxfield@ptd.net

DIRECTORY CONTINUED

GEORGE STILLWELL

114 Emleys Rd
Cream Ridge, NJ 8514
609-273-1602
renee.stillwell.ffa@gmail.com

NEVADA

RABBIT CREEK SHEEP FARMS LLC

KRISTON HILL
1188 Court St #52
Elko, NV 89801
775-340-5554
kriston1012@gmail.com

95 RANCH

SHANE SANTISTEVAN
Hc36 box 570
Lamoille, NV 89828
775-934-7848
shane.santistevan@sandvik.com

NEW YORK

DIANE & WILLIAM BRYNDA

1606 State Route 30A
Esperance, NY 12066
518-868-4437
hanhamps@gmail.com

DEBRA COLE

28 Nevis Road
Tivoli, NY 12583
845-389-6152
dlcole@frontiernet.net

NATHAN & JENNIFER FUNK

1043 County Road 19
Norwich, NY 13815
607-336-1662
njfunk36@gmail.com

FOUR WINDS HAMPSHIRE

CHAD HANSEN
1399 Hullsville Rd
Owego, NY 13827
607-687-6865
fourwinds0906@yahoo.com

JACK & SARAH JAKEMAN

1283 Latimer Hill Rd
Canajoharie, NY 13317-3735
401-787-8316
cheviot99@gmail.com

FOLDING HILLS HAMPSHIRE

HEATHER & MALCOLM JOHNSON
433 Mickle Hollow Rd
Warnerville, NY 12187
518-935-5766
malcolmbuzzjohnson@yahoo.com

TOP NOTCH LIVESTOCK

ASHLEY MCFARLAND
PO BOX 258
Richfield Springs, NY 13439
315-406-3963

KELSEY & KATELYN

O'HARE
6168 Curriers Rd
Arccade, NY 14009
716-560-8454
johare6@gmail.com

DAVID PICKNEY

6365 Cayuga Rd
Cayuga, NY 13034
315-406-8949
pnkyfrmw@verizon.net

MATHEW PICKNEY

6365 Cayuga Rd
Cayuga, NY 13034
315-665-1006

OHIO

SYCAMORE LANE

HAMPSHIRE
MIKE BARNES
14207 Township Road 199
Kenton, OH 43326
937-539-3825
mlb0142@yahoo.com

KEITH BARNES

308 CR 51 W
Belle Center, OH 43310
937-441-4237
kkbarnes@watchtv.net

KEVIN BARNES

18466 Moyer Rd
Waynesfield, OH 45896
567-204-5232
kbarns2014@gmail.com

TBM FARMS

TOM BAUGHMAN
2765 Rix Mills Road
New Concord, OH 43762
740-872-3184

MADISON BAUMER

8181 SR274
Anna, OH 45302
937-658-3119
brandtfarms@hotmail.com

BAYLISS STOCK FARM

DOUG BAYLISS
1214 St Rt 274 E
Rushsylvania, OH 43347
937-935-7549
dbayliss1957@gmail.com

CARR HAMPSHIRE

MITCH CARR
2362 Brownsville Rd
Newark, OH 43055
740-76303578
sales@oifp.com

DARIN CHRISTMAN

67550 Batesville Rd
Quaker City, OH 43773
740-260-1257
christman1@windstream.net

CLUNK FAMILY HAMPS

ROBERT CLUNK
4054 Larue Green Camp
Marion, OH 43302
740-528-2551
clunkhamps@yahoo.com

JOE CRISWELL

1166 Prospect
Marion, OH 43302
740-369-9099

DOUBLE BAR D

DEBORAH & DENISE DEAL
9818 Navarre Rd SW
Navarre, OH 44662
330-879-5327
ddeal1957@aol.com

DIXON FARM

KARA DIXON
47999 Lewisville N Rd
Lewisville, OH 43754
740-228-3118
dixonfarm@live.com

CHAD & HANNAH EPLEY

104 E Hocking St
Canal Winchester, OH 43110
740-503-1949
theonlysheepman@hotmail.com

ERWIN FAMILY HAMP FARMS

14101 Boundary Rd
Richwood, OH 43344
937-578-8303
dcerwin4@aol.com

EAST VIEW FARM

HAROLD HEIDLEBAUGH
5760 Peltier Rd
Delphos, OH 45833
419-695-8696

WAYNE HORTON & FAMILY

6823 Williams Rd
Painesville, OH 44077
440-352-1023
mrwayneshorton@gmail.com

HOWELL CLUB LAMBS

LARRY HOWELL
8582 Township Line Rd
Celina, OH 45822
419-953-0238
larryhowell@bright.net

RUSS & MOLLY

JOHNSON FAMILY

3020 Fox Lake Rd
Wooster, OH 44691
330-345-1290
rivenoak@sssnet.com

KING FARMS HAMPSHIRE

KYLE KING
3220 Cr 170
Fremont, OH 43420
419-307-6145
kylekng56@aol.com

SCARLET ACRES

DUSTIN KNAPKE
08372 Glynwood Rd
Wapakoneta, OH 45895
614-759-6841
dustin.knapke@gmail.com

KORB FAMILY FARMS

ANDY & JEFF KORB
1525 Sample Rd
Oxford, OH 45056
513-312-0648
akorb16@aol.com

MCCANDLISH HAMPSHIRE

5200 Woolard Rd NE
Pleasantville, OH 43148
740-808-1757
whisperdaisy19@hotmail.com

MC COY CLUB LAMBS

MIKE & LINDA MC COY
2120 Twp Rd 757
Perrysville, OH 44864
419-685-1377

mccoy2626@hotmail.com

MCCOY CLUB LAMBS

MICHAEL MCCOY
6618 Wadsworth Rd
Orrville, OH 44667
330-465-5465

MEYERS SHOW LAMBS

LEE MEYERS
1668 Apple Rd
St. Paris, OH 43072
937-214-1303
leemeyers@windstream.net

S & P MYERS & FAMILY

4450 St Rt 274 E
Rushsylvania, OH 43347
937-935-6715
sptmyers@centurylink.net

NEAL SHOW LAMBS

JEFF NEAL
778 E CTY RD 50
TIFFIN, OH 4483
419-356-0128

WALTER PAXSON & FAMILY

10781 Sugarcreek Rd
Harrod, OH 45850
419-358-5327
walterpaxson@embarqmail.com

CRAIG POWELL

18570 TWP Rd 90
Forrest, OH 45843

SCHLICHTER HAMPSHIRE

DAN & LINDA SCHLICHTER
10187 Praire Rd NW
Washington Ch, OH 43160
740-426-6725
hampsheep@in-touch.net

SHELL'S HAMPSHIRE

DAN SHELL FAMILY
1901 Doak Rd
Midland, OH 45148
937-302-8367
shellshampshires@hotmail.com

SHROYER SHOW STOCK

JOHN SHROYER
3296 Tr 35
De Graff, OH 43318
937-935-0830
jshroyer@watchtv.net

STAR-MAR FARMS

STARRETT FAMILY
7589 Perry's Den Rd
Cumberland, OH 43732
740-638-2521
starmarsheep@gmail.com

STEFFEN HAMPSHIRE

RICHARD STEFFEN
172 Twp Rd 1281
New London, OH 44851
419-929-1184

STITZLEIN FARM

MICHAEL STITZLEIN
797 CO Rd 1754
Ashland, OH 44805
419-651-3501
mikestitzlein@gmail.com

DR GARY TOPP & FAMILY

5093 Highview Dr
Fredericksburg, OH 44627
330-695-5541
kgtopp@yahoo.com

BACKWOODS FARM

JEFF ULRY
7367 Harmony Church Rd
Johnstown, OH 43031
740-967-7250
julry@gmail.com

DAN WESTLAKE

17183 Mackan Rd
Marysville, OH 43040
937-243-5111
tanddd3j@jencospeed.net

WISE HAMPS

TOM & CAROL WISE
16099 Cr 172
Findlay, OH 45840
419-427-8608
ewer@wisehamps.com

CUNNINGHAM FARMS

18745 Cr 109
Arcadia, OH 44804
419-348-1896
arcadiabuckeyehops@gmail.com

FLINT RIDGE FARM

5091 Mulberry Rd Se
Newark, OH 43056
740-763-3875

BRANDT'S HAMPSHIRE

8181 St Rt 274
Anna, OH 45302
937-658-3119
brandtfarms@hotmail.com

OKLAHOMA

REBECCA ALLEN

20510 Liberty Rd
Morris, OK 74445
918-381-6069
allenuclublamb@gmail.com

ALLEN SHOW LAMBS

TY & NICOLE ALLEN
20510 E 1110 Road
Elk City, OK 73644
580-225-2679
allennl83@gmail.com

BRUNKER CLUB LAMBS

BRANDON BRUNKER
7222 South Fairgrounds Rd
Stillwater, OK 74074
405-612-8152
brunkerclublamb@yahoo.com

CABANISS CLUB LAMBS

JOE CABANISS
22220 E 1010 Rd
Arapaho, OK 73620
580-445-6075
cabanissclublamb@gmail.com

NOC SHEEP CENTER

BART CARDWELL
1220 E Grand
Tonkawa, OK 74653
580-628-6463
bart.cardwell@noc.edu

DON CHANDLER

80588 N2592 RD
Watonga, OK 73772
580-623-2276
donchandler@pldi.net

DEREK CHAPIN

608 Brandon Place
Yukon, OK 42099
815-531-9639
derekchapin@att.net

CHARMASSON CLUB LAMBS

CHAD CHARMASSON
PO BOX 823
Hennessey, OK 73742
580-512-1438
ccharmason@hotmail.com

JOSHUA CHRISTIAN

22020 County Road 1560
Stonewall, OK 74871
580-235-1342
joshuacrastian@yahoo.com

COLE CLUB LAMBS

REX COLE
11281 N 1975 Road
Elk City, OK 73644
580-821-2355
colewoolies@cablone.net

NEW BEGINNINGS CLUB LAMBS

GALEN CONNER
29774 E 760 Rd
Wagoner, OK 74467
620-747-0414

D&P CLUB LAMBS

JAMES DAVIS
334781 E860 Rd
Wellston, OK 74881
405-642-5202
j.davis728@yahoo.com

JIMMY DAVIS

1204 W Colorado
Walters, OK 73572
580-585-3822
jdavisag@yahoo.com

DESKIN CLUB LAMBS

JASON & ASHLEY DESKIN
13975 Cotton Gin Ave
Wayne, OK 73095
405-623-5588

JEREMY EATON

28226 E 840 RD
Cashion, OK 73016
405-433-9163
eatonclublamb@att.net

KODY EVERETT

11231 CR 3554
Ada, OK 74820
580-212-0737
kody.everett@gmail.com

FLANDERS SHEEP

DEVIN FLANDERS
803 Glen Johnson Rd
Okemah, OK 74859
918-623-8515
devinflanders@sbcglobal.net

GOODWIN CLUB LAMBS

DALE GOODWIN
8550 W North Ave
Ponca City, OK 74601
580-765-0039
dgoodwin@poncacity.net

JOE HARRELL

24848 W Gore Blvd
Indiahoma, OK 73552
580-591-1091
harrell.joe@sbcglobal.net

KEEGAN & KAYLN HOLT

PO BOX 1
Cordell, OK 73632
580-660-0899
gailoneil75@gmail.com

CHISM HOLT

PO BOX 1
Cordell, OK 73632
580-660-0899
gailoneil75@gmail.com

LAND RUN HAMPS

AARON & RYAN HUBBARD
342490 E 760 Rd
Agra, OK 74824
918-225-9743
megafarms1@yahoo.com

DWAYNE HURLIMAN

Rr 3 Box 6a
Cordell, OK 73632
580-603-1755
baabaa65@yahoo.com

KARBERVILLE FARMS & RANCH

SAM KARBER
RT 2 BOX 100
Balko, OK 73931
580-361-2398
smkarb52@gmail.com

CHRISTI KEETON

PO Box 175
Ninnekah, OK 73067
405-320-2386
christikeeton1981@hughes.net

BROOKS & KIMBERLY KING

18728 S Mingo
Bixby, OK 74008
918-366-3831
kim4king@olp.net

KRINSKY HAMPS

JOSH & REBECCA KRINSKY
PO Box 726
Washington, OK 73093
405-501-1593
krinskyhamps@gmail.com

ALYSSA MACDONALD

8525 E 126th St S
Bixby, OK 74008
918-951-2000
bixbysheepboutique@gmail.com

A & F CLUB LAMBS

ALICIA & FALICI MANSFIELD
RT 1 Box 408
Wann, OK 74083
620-515-4993
aliciamansfield@yahoo.com

VINCE & JACKIE MC GOLDEN

PO Box 432
Fairview, OK 73737
580-744-0844
mcgolden@pldi.net

ALLISON MCGOLDEN

PO Box 744
Arapaho, OK 73620
580-323-7198
amcgolden@hotmail.com

JENNIFER MOSER

PO BOX 36
Yale, OK 74085
918-399-0516
moserranch@yahoo.com

OKLAHOMA STATE UNIVERSITY

103 Animal Science Bldg
Stillwater, OK 74078
405-627-4010
darin.annuschat@okstate.edu

JALEIGH & CALLEN

OLDENBURG
2286 W CO Rd 257
Mulhall, OK 73063
405-880-5857
oldenburgjeff@gmail.com

OTT CLUB LAMBS

BRAD & DEB OTT
50653 S Co Rd 257
Fairview, OK 73737
580-794-9324
bott@pldi.net

ALEX PEACE

960356 S HWY 18
Chandler, OK 74834
405-258-4062
peacevalleyfarms8@yahoo.com

PIRTLE FARMS

RANDY PIRTLE FAMILY
397271 W 400 Rd
Copan, OK 74022
918-440-4553
randy.pirtle@okstate.edu

MARVIN PURDY & SON

4202 W Doolin Ave
Blackwell, OK 74631
620-271-2999
r.purdy@sbcglobal.net

SCOTT REED

1202 W Colorado
Walters, OK 73572
580-351-8555

JO DEE & JAMES

REXWINKLE
PO Box 23
Afton, OK 74331
918-637-2304

RICHARDSON CLUB LAMBS

JOHN RICHARDSON
21224 East 1050 Rd
Foss, OK 73647

TRIPLE R HAMPSHIRE

CARLA ROBISON
103954 S 3300 Rd
Harrah, OK 73045
405-517-7786
crobison67@yahoo.com

RUBY'S RANCH HAMPSHIRE

MELINDA RUBY-GRUNER
18010 N 93rd E Ave
Collinsville, OK 74021
918-405-3819
melinda.rubygruner@yahoo.com

SCOTT SCHAEFFER

2714 N Sangre Rd
Stillwater, OK 74075
405-743-5646
sschaefer@yahoo.com

DARIN SNIDER

PO Box 163
Helena, OK 73741
580-977-4388

RAYLEE & LAREMI SOELL

Route 1 BOX 79A
Texhoma, OK 73949
806-339-8220
sjsuell@gmail.com

KATHRYN TAYLOR

23853 E 1035 Rd
Weatherford, OK 73096
580-302-3241
kathryn.n.taylor@gmail.com

TEAGUE FAMILY FARM

JEREMY TEAGUE
PO Box 2394
Owasso, OK 74055
918-798-3298
cheyannateague25@gmail.com

ROBERT TESTERMAN

304 W 4Th St
Owasso, OK 74055
918-274-8843
ttwtsted8@aol.com



DIRECTORY CONTINUED

SHACOLE THOMPSON

101 S Ada St
Coalgate, OK 74538
580-889-1510
jason@semachine.com

WILBOURN RANCH

DENNIS WILBOURN
101 Star Ridge Rd
Morrison, OK 73061
405-249-8896
dwilbourn@bbumail.com

SKIPPER BILL WILSON

18224 E 19th St
Yale, OK 74085
580-977-8625
skipperwclublamb@gmail.com

SHENOLD CLUB LAMBS

3902 W 56th
Stillwater, OK 74074
405-334-2293
jacklyn46@live.com

OREGON

BOB & ANNETTE

ASCHENBRENNER

83110 Eggleston LN
Enterprise, OR 97828
541-263-0433
annette.aschenbrenner@gmail.com

BOATMAN CLUB LAMBS

DAVID BOATMAN
5700 Nw Ryegrass Rd
Prineville, OR 97754
541-815-0205

ROCKY RIDGE HAMPSHIRE

DANIEL BOLEN
62836 Ernest Rd
Elgin, OR 97827
503-704-2043
daniel@dymco.org

BAR 4R BOTHERN

ROBERT BOTHERN
6435 W Evans Creek
Rogue River, OR 97537
541-864-0439
iamnotbotherd@gmail.com

BURNS-HALE LIVESTOCK

LOYAL & DEBORAH BURNS
PO Box 244
Crabtree, OR 97335
541-258-6934
deb@bhlivestock.com

BETTY JO BUTTERFIELD-ROTHBALLER

744 NE Oak Place
Redmond, OR 97756
541-280-2497
hrothballer@gmail.com

CHAR-LAND FARMS

LISA CHARPILLOZ HANSON
32525 S Barlow Rd
Woodburn, OR 97071
503-651-2047
alekhanson@live.com

JULIE ENGLUND

89784 McCroskey Rd
Astoria, OR 97103
503-325-0527
jenglund@teleport.com

FORSTER SHEEP FARM

MONTE FORSTER
33300 Mefarland Rd
Tangent, OR 97389
541-979-8629
monteforester@comcast.net

JENNY & JULIA GALVIN

PO BOX 835
Turner, OR 97392
503-743-2744
jmgalvin53@yahoo.com

DAVE GOWAN

1550 Azalea Drive
Elkton, OR 97436
541-584-2217
philofarmer@saber.net

CHAR-LAND FARMS

ELLIE & KATIE HANSON
32525 S Barlow Rd
Woodburn, OR 97071
503-881-6550
alekhanson@live.com

HARMS HAMPS

MIKE HARMS FAMILY
26200 S Harms Rd
Canby, OR 97013
503-810-9379
harmss@canby.k12.or.us

HUBBARD-ROSELAWN HAMPSHIRE

CM HUBBARD
27511 W Ingram Island Rd
Monroe, OR 97456
541-554-1439
cmhubbard@99w.us

EMMA HUBBARD

37820 Jones Road
Bonanza, OR 97623
541-545-6357
hubbard796@gmail.com

D P MACCARTHY & SON

4920 N Matney Rd
Monmouth, OR 97361
503-838-1766
s.mccarthy@wildblue.net

OLSON RANCH

BARB & KIM OLSON
35524 Zephyr Way
Pleasant Hill, OR 97455
541-954-1110
olyranch@aol.com

HALEY ROTHBALLER

744 Ne Oak Place
Redmond, OR 97756
541-280-2497
hrothballer@gmail.com

STOTERA FARMS HAMPSHIRE

TONY STOTERA
83261 Rattlesnake Rd
Dexter, OR 97431
541-747-2634
bugasheep@aol.com

THOMPSON RANCH

JIM & ELAINE THOMPSON
33877 Red Bridge Rd SE
Albany, OR 97322
541-926-8847
ethom12440@aol.com

PENNSYLVANIA

ECHO HOLLOW FARM

ERIC & SALLY BACON & SONS
12855 Laurel Rd
Brogue, PA 17309
717-927-9534
s-atool@verizon.net

BEATTY'S CLUB LAMBS

GREG & JAMIE BEATTY
1358 Rustic Lodge Rd
Indiana, PA 15701
740-501-0042
jamiebanbury@live.com

BISHOP'S CLUB LAMBS

TIMOTHY BISHOP
2002 Fairman Hollow Rd
Creekside, PA 15732
724-422-0173
tim.bishop77@gmail.com

MR & MRS CLYDE BRUBAKER

263 S Mountain Rd
Robeson, PA 19551-9216
610-589-2137
jcdbluacre@aol.com

SONSHINE ACRES

WALTER W & DENISE CLARK
20862 Ryan Rd
Meadville, PA 16335
814-333-9251
wwclark@windstream.net

STEPHANIE DORER

932 North Queen Street
York, PA 17404-2556
717-848-9674
oreo694@aol.com

TIM & SARAH FLEENER

273 S Mountain Rd
Robeson, PA 19551
717-413-5181
fleenerlivestock@gmail.com

KYLE & JEN FLEENER

807 Beecherstown Rd
Biglerville, PA 17307
717-304-9116
fleenerkm@yahoo.com

SAMUEL HAYES, JR

PO BOX 120
Warriors Mark, PA 16877
814-632-6390

HOLTRY HAMPS

RAY & MINDY HOLTRY
2290 Pine Rd
Newville, PA 17241
717-776-4192

CARALYNN HYDUKE

102 Forbes Trail Dr
Export, PA 15632
724-472-7729
cjh31391@yahoo.com

H F LONGWELL & SON

11697 State Rd
Kittanning, PA 16201
724-859-0704
jerry1123@windstream.net

LOVELL MAPLE SPRING FARM

RALPH & MARIAN LOVELL
516 Maple Spring Rd
Linden, PA 17744
570-494-0288
lovellfarm@msn.com

DAVID LYTLE FAMILY

190 Church Rd
Lincoln University, PA 19352
484-678-9291
david.lytle@churchdwdwight.com

J & M MAGEE CLUMB LAMBS

J MAC MAGEE
PO BOX 106
Orrstown, PA 17244
717-377-1469
mac.magee@yahoo.com

MARSH FARM

NANCY MARSH
3065 Compass Rd
Honey Brook, PA 19344
484-645-3560
nmarsh55@comcast.net

TRIPLE J HAMPS

JESSI MCCARTY
8 Spring Hollow Ln
Bloomsburg, PA 17815
570-441-1323
triplejhamps@outlook.com

BRIDGET MCCONN

PO Box 84
West Alexander, PA 15376
724-484-7893
peggy.mcconn@gmail.com

RACHEL PAINTER

128 Painters Lane
Avilla, PA 15312

TWIN MAPLES FARM

JAMES & MELODY PARLETT
88 Parlett Rd
Airville, PA 17302
717-862-3610

KAYLA SHUGHART

1552 W TRINDLE RD
CARLISLE, PA 17015
717-460-7310
kmyers012@gmail.com

SMITH CLUB LAMBS

DWIGHT & GAIL SMITH
1431 Glencoe Rd
Fairhope, PA 15538
814-279-4329
gsmith1925@gmail.com

JADEWOOD VALLEY FARM

STACY TAYLOR
1467 Ringgold Timblin Rd
Timblin, PA 15778
814-360-2161
stctyler@aol.com

MATT TROSTLE

2550 Cape Horn Rd
Red Lion, PA 17356
717-757-6062
mit_sdown2001@yahoo.com

NIKI WELSH-RYBURN

32 Longview Ln
Claysville, PA 15323
724-986-2693
welshfarmsheep@gmail.com

MARSH FARM

3065 Compass Rd
Honey Brook, PA 19344
484-645-3560
nmarsh55@comcast.net

**ANIMAL SCIENCE
DEPARTMENT**

DELAWARE VALLEY COLLEGE
700 E Butler Ave
Doylestown, PA 18901
215-489-2247
natalie.crooke@delval.edu

RHODE ISLAND

BERTINA FISK

PO Box 71
Clayville, RI 2815
401-465-8159
tinashamps@verizon.net

STRAWBERRY FIELDS

SUE A SEARLE
198 Weaver Hill Rd
West Greenwich, RI 2817
401-374-1255
sueasearle@yahoo.com

SOUTH DAKOTA

DONNIE BEGALKA

46576 187th St
Castlewood, SD 27223
605-873-9309
sbegalka@ictel.com

BODDICKER FARM

WILLIAM & BRANDY BODDICKER
4127 273rd St
Parkston, SD 57366
605-770-8496
lilstutz1@yahoo.com

MICHEL & BETTY BRINK

38832 US Hwy 212
Redfield, SD 57469
605-472-0769

CHAPMAN HAMPSHIRE

BEAU CHAPMAN
PO BOX 251
Bison, SD 57620
605-244-7166
beauchapman@sdplains.com

DALE FAMILY LIVESTOCK

JUSTIN DALE
PO BOX 86
Garden City, SD 57236
307-299-1227
dalefamfarm@hotmail.com

DEZEEUW FARMS

RUFUS DEZEEUW FAMILY
21315 Us Hwy 14
Elkton, SD 57026
605-690-8269
rpdezeuw@svtv.com

MATT EICH FAMILY

21853 465th Ave
Volga, SD 57071
605-690-8748
agronomyguy674@gmail.com

FAIRLEY FARMS

BRIAN FAIRLEY
45255 313st St
Gayville, SD 57031
605-660-8025
fairley1@hotmail.com

FULLER'S HAMPS

PAUL FULLER FAMILY
210 N Cloud St
Clark, SD 57225
605-881-9649
lambs4u@itctel.com

FULLER SHEEP FARM

WAYNE FULLER
17889 SD HWY 25
Vienna, SD 57271
605-881-8384
wlfuller@itctel.com

FULLER BROS

BILL & JODY FULLER
17557 434th Ave
Clark, SD 57225
605-881-9649
lambs4u@itctel.com

FULLER FARMS SHEEP

DAVID FULLER
17404 435th Ave
Henry, SD 57423
605-881-2968
fullerfarms@icloud.com

ROB FULLER FAMILY

17557 434Th Ave
Clark, SD 57225
605-881-9649
lambs4u@itctel.com

FULLER SHEEP FARM

DUSTY FULLER FAMILY
43307 176th St
Clark, SD 57225
605-520-4403
jdfuller@hotmail.com

GAPP HAMPSHIRE

DAVID GAPP
46552 149th St
Twin Brooks, SD 57269
605-398-6514
dlgapp@trics.com

GERDES HAMPSHIRE

DAN & DARRELL GERDES
23012 457th Ave
Madison, SD 57042
402-760-0104
gerdeshamps@gmail.com

BEVERLY HEIER

13961 Prairie City Rd
Prairie City, SD 57649
605-866-4410
heiranch@sdplains.com

HELD'S HAMPSHIRE

JEFF & MARY HELD
21320 477th Ave
Aurora, SD 57002
605-690-7033
mhheld461@gmail.com

KELSEY HOUGHTALING

38354 197th St
Wolsey, SD 57384
605-635-6222

JENSENS HAMPSHIRE

RANDY JENSEN FAMILY
1515 38th Ave NW
Watertown, SD 57201
605-868-9203

DAVID JUNTUNEN FAMILY

43950 187th St
Bryant, SD 57221
605-628-2949
jute@itctel.com

L & L HAMPSHIRE

BRENT LARSON
20205 477th Ave
White, SD 57276
402-206-3188
larson76@gmail.com

ROCKING L RANCH

KAREN & LAVERN LEE
15421 455th Ave
South Shore, SD 57263
605-880-2565
klee@tnics.com

MARSHALL SHEEP CO

BARRET MARSHALL
45491 204th St
Arlington, SD 57212
605-695-2528
barretmarshall@hotmail.com

MILLER FARMS

KODY MILLER
20067 462nd Ave
Bruce, SD 57220
605-627-5247
kodymillercattle@hotmail.com

PHILLIP C MOORE FAMILY

25240 375th Ave
White Lake, SD 57383
605-249-2471

DOUBLE A RANCH

ARTHUR NELSON
15445 454th Ave
South Shore, SD 57263
605-949-2034
abean4444@yahoo.com

LARRY & POLLY OLSEN

24280 389th Ave
Plankinton, SD 57368
605-999-0030
lpolsen@siouxvalley.net

PETERSON SHEEP CO

DOUG & LINDI PETERSON
803 23rd St NE
Lemmon, SD 57638
701-376-3115
peterston@sdplains.com

JOHN & ALICIA RIST

29082 461st Ave
Centerville, SD 57014
605-563-2323
john.rist@k12.sd.us

BODDICKER FARM

WILLIAM, BRANDY, SAVANNAH & LANCE

41728 273Rd St
Parkston, SD 57366
605-928-4017
sfbullhauler25@yahoo.com

WILLIAM SCHIEFELBEIN & SONS

304 8th Ave S
Clear Lake, SD 57226
605-874-2019
wschiefe@itctel.com

SLACK FAMILY FARM

JEFF SLACK
29141 SD HWY 19
Viborg, SD 57070
605-360-4904
jeff@southeastern.coop

SOUTH DAKOTA STATE UNIV

ATTN: ANN KOLTHOFF
ANIMAL & RANGE SCIENCES
Box 2170 N Campus Dr
Brookings, SD 57006
605-693-3808
ann.kolthoff@sdstate.edu

THOMAS HAMPS

PHILIP & JADEN THOMAS
44036 Sd Hwy 44
Marion, SD 57043
605-759-0574
pjt@gwtc.net

HOUGHTALING HAMPS

18522 407th Ave
Doland, SD 57436
605-350-4222
janh@nrctv.net

PLEASANT RIDGE FARM IV

19742 429 Ave
Desmet, SD 57231
605-854-9243
sheila.poppen@k12.sd.us

TONAK HAMPSHIRE

43086 Sd Hwy 28
Willow Lake, SD 57278
605-625-3306
dan.tonak@k12.sd.us

BERENS FAMILY HAMPSHIRE

27974 448th Ave
Parker, SD 57053
605-661-3963
rberens@gwtc.net

TENNESSEE

FINE LINE GENETICS

AUSTIN & AMANDA EDWARDS
364 George Cox Road
Sparta, TN 38583
386-804-4642
aledwards422@gmail.com

GAGE GODDARD

2999 Hines Valley Rd
Lenoir City, TN 37771
865-458-5612
jg@utk.edu

HULL CLUB LAMBS

JUSTIN HULL
2205 Halltown Rd
Hartsville, TN 37074
541-419-3021
hullclublambs@gmail.com

LINCOLN FARM

BEN POWELL
4233B Poplar Hill Rd
Watertown, TN 37184
615-237-0300
benthomaspowell@gmail.com

BIG OAKS FARM

JAMES TRIVETT
23 Towry Rd
Fayetteville, TN 37334
931-433-4068

TED TURNER

653 Laighs Chapel Road
Covington, TN 38019
901-476-2779
turner476@aol.com

TEXAS

LINDA BERRY
16897 Krug Rd
Tomball, TX 77377
713-206-2845
lberrysusa@gmail.com

DIRECTORY CONTINUED

BARRETT CARLISLE

6487 East FM 41
Ropesville, TX 79358
806-548-2636
skippercarlisle@yahoo.com

CHABOT SHOW LAMBS

DARICK CHABOT
3380 County Rd 226
Stephenville, TX 76401-7353
254-485-3016
darickchabot@gmail.com

ROBERT & TRACY COFIELD

1608 Royalwood Circle
Joshua, TX 76058
817-791-4435
tracy.cofield@gmail.com

ROBERT CURRIE

20542 HWY 105
Cleveland, TX 77328
281-802-8468
frobertycurrie@sbcglobal.net

JEFFREY DUDENSING

10100 CR 428
Somerville, TX 77879
806-790-2817
jeffrey.dudensing@gmail.com

ELLEDGE SHEEP FARM

KRIS EDE
6483 Highway 90 West
Uvalde, TX 78801
830-486-6080
elledgesheep@gmail.com

ESMOND CLUB LAMBS

KIRK ESMOND
525 Skyline Dr
Argyle, TX 76226
214-213-5942
hairypet@pwhome.com

KAYDI FARR

100100 W US HWY 84
Gatesville, TX 76528
254-223-3687
kaydifarr.kf@gmail.com

CODY FARRIS

118 Trifecta Ln
Fort Worth, TX 76126
830-391-5437
farrisfarmsclublambs@yahoo.com

FARROW HAMPSHIRE

COBY FARROW
10706 E County Rd 120
Midland, TX 79706
432-413-7590
farrowhampshires@gmail.com

ROBERT GARCIA

30 FM 1407
Crystal City, TX 78839
830-334-1330
rng_911@yahoo.com

GUY GLASSCOCK

PO Box 3096
Early, TX 76803
325-642-3131
guyslamb11@aol.com

RICHARD HUNTER

PO Box 532/900 CR 426
Jourdan, TX 78026
830-570-2857

MIKE JONAS

5723 Purgatory Rd
New Braunfels, TX 78132
830-964-3100
mjonas@gvtc.com

KOUNS HAMPSHIRE

JOSH KOUNS
PO Box 205
Seymour, TX 76380
317-402-7696
kounslivestock@gmail.com

CODY & RUSTY LANIER

151 Cr 309
Seminole, TX 79360
432-770-0481
lanierjoel@yahoo.com

LANIER FARMS

JOEL LANIER
151 Cr 309
Seminole, TX 79360
432-770-0483
lanierjoel@yahoo.com

BRISTER CLUB LAMBS

SARAH LOVING
6867 CR 501
Anson, TX 79501
254021603244
sarah@bristerclublambs.com

WAYNE MAHLER

171 STate HWY 83 E
Seagraves, TX 79359
803-831-9202
wmahler24@gmail.com

TYLER MALTSBERGER

214 Crestwood Dr
Kerrville, TX 78028
210-241-5982
maltbergerlivestock@gmail.com

KEVIN MEEK ENTERPRISES

KEVIN MEEK
15003 FM 1268
Canadian, TX 79014
806-662-4372
kwmeek63@gmail.com

CHRISTOPHER MEIWES

825 Highway 70
Earth, TX 79013
806-346-3411

DERICK MILLER

1550 B Cr 121
Seagraves, TX 79359
806-239-3670
show_ring@hotmail.com

DUSTIN MILLER

2011 Cr 400
Brownfield, TX 79316
806-535-7400

JIM MILLER

1550 A Cr 121
Seagraves, TX 79359
806-487-6891
millerhampshires@hotmail.com

MIKE NICHOLS

3000 Cr 305
Zephyr, TX 76890
936-760-9699
lambmassterm53@yahoo.com

ABBY NIGHTINGALE

1413 State Hwy 173 S
Bandera, TX 78003
830-796-3787
drconrad@sbcglobal.net

ROCHELLE POZO

38973 Addie Gee Rd
Hempstead, TX 77445
832-515-1543
hollipozo@yahoo.com

JERROD ROBINSON

2695 Fm 983
Red Oak, TX 75154
214-714-7471
jerrod_robinson@yahoo.com

RAY RUST

517 Hwy 289
Comfort, TX 78013
830-995-2310

STUART SPRUILL

5206 Cr 185
Stephenville, TX 76401
254-977-2390
spruill53@embarqmail.com

SAVAGE CLUB LAMBS

EVAN & CELE STONE
761 Fm 40
Ralls, TX 79357
806-241-3644
savagelclublambs@hotmail.com

DRAGGIN'S LIVESTOCK

REED SULTEMEIER
1921 Doebbler Rd
Fredericksburg, TX 78624
830-889-1972
dawn.sultemeier@yahoo.com

TEXAS A & M UNIVERSITY

2471 Tamu
College Station, TX 77843-2471
979-209-9714
cmsharpston@tamu.edu

TURNER SHOW STOCK

ANDY TURNER
1220 Hynds Ranch Rd
Van Alstyne, TX 75495
254-290-0420
turnershowstock@verizon.net

DAN VESTAL

806 Vestal Dr
Fredericksburg, TX 78624
830-998-0028

MARK WALLEN

3113 South US Hwy 75
Sherman, TX 75090
469-595-9054
mwallen@gmail.com

HILL COUNTRY SHOW

LAMBS
RODNEY & SHERRI YATES
PO Box 1491
Boerne, TX 78006-1491
830-446-9031
sherriyates@yahoo.com

ROCKIN C FARMS

851 Fm 179
Tahoka, TX 79373
806-470-5027
mgclem1@yahoo.com

HAWS CLUB LAMBS

117 Haws Circle
Beeville, TX 78102
361-446-1499
nlhaws@yahoo.com

UTAH

JOHN ALLRED/CLAY ELLIOTT

642 E 2500 S
Vernal, UT 84078
575-635-6340
johna@easilink.com

WADE JENSEN

PO Box 412
Cleveland, UT 84518
435-653-2361

SHELBY JORGENSEN

1805 W 116
Mt. Pleasant, UT 35729
435-469-1639
sjorgensen2425@gmail.com

ALVIN & CATHY MCNEIL

2295 N SR 32
Kamas, UT 84036
435-640-8172

MILLER CLUB LAMBS

JOSH MILLER
507 North 100 East
Monroe, UT 84754
435-893-1950
joshmiller0315@gmail.com

OLSEN FAMILY SHEEP

JOHN OLSEN
1151 S 2230 E
Spanish Fork, UT 84660
801-360-6605
johnolsenaccounting63@gmail.com

DOUBLE L SHEEP CORP

LARRY OR LINDA PAULY
3150 S 2500 W
Delta, UT 84624
435-864-1884
lpauly44@gmail.com

ROBBINS BROTHERS HAMPS

JESSE & DAVID ROBBINS
137 S 300 E
Santaquin, UT 84655
949-382-8992
jessg.robbins@gmail.com

K & K GRAMPS HAMPS

KETCHER & KUTTER WADE
429 S 3600 E
Heber, UT 84032
435-671-6060
kristinwade19@yahoo.com

VIRGINIA

DOMINION LIVESTOCK

JOHN AREHART
78 Oak Springs Lane
Staunton, VA 24401
540-241-5285
dominionlivestock@yahoo.com

JACK & KINLEY BEGOON

164 Stonewall Lane
Grottoes, VA 24441
540-430-1716
begoonfarm@gmail.com

FOX GRAPE FARM

WILLIAM S & WANDA BROCKMAN
PO Box 55
Piney River, VA 22964
434-277-5019

DANA GOCHENOUR

3505 Back Road
Woodstock, VA 22664
540-335-2210
dgochen@vt.edu

HEISHMAN HAMPSHIRE

1747 Conicville Rd
Mount Jackson, VA 22842
540-325-2102
adheish@vt.edu

2018 AHSA MEMBERSHIP DIRECTORY

ABIGAIL & MIKAYLAH SHOWALTER

14823 Grindstone Ln
Fulks Run, VA 22830
540-896-2029

WASHINGTON

MIKE CUMMINGS HAMPSHIRE

31006 68th Ave NW
Stanwood, WA 98292-9646
360-629-2994
dannanc72@yahoo.com

SHANNA FLOWER

3108 Hunt Road
Oak Harbor, WA 98277
360-770-8857
flower3_9997@yahoo.com

TROY HASLEM

23627 NE 57th Ave
Battle Ground, WA 98604
360-687-8784
sheephamp@aol.com

HICKMAN'S HAMPSHIRE

JIM & JOY HICKMAN

1295 Bussell Road
Walla Walla, WA 99362
612-860-9701
hickmanshamps@gmail.com

LEFEVER HOLBROOK RANCH

MATT, MADISON & CONOR

HOLBROOK

1098 HWY 97
Goldendale, WA 98620
509-773-3443
papa_pkjh@yahoo.com

LINDA MASTIN

4202 Freeman Rd E
Fife, WA 98424
253-922-5963
mastin.linda@gmail.com

PUMPHREY HAMPS

THE PUMPHREY FAMILY

356 Chamberlain Rd
Walla Walla, WA 99362
541-760-7930
c_pumphrey@hotmail.com

BRANDON ROBERTS

18901 NE 399th Street
Amboy, WA 98601
360-904-5135

SCHERER CLUB LAMBS

JEFF & DEANNE SCHERER

21903 Zenkner Valley Rd
Centralia, WA 98531
360-736-0463
scherer.d@sgcgeneral.com

SWEENEY HAMPSHIRE

JEFF, CHRIS & KYLE SWEENEY

39614 N Spotted Rd
Clayton, WA 99110
509-703-3728
sweeneyclayton@gmail.com

V-8 SHEEP

LARRY VERHAGE

6206 North Harvard Road
Newman Lake, WA 99025
509-760-5743
lverhage64@gmail.com

RENE & MATHEW WIGEN

22807 NE 109th St
Vancouver, WA 98682
530-304-0239
rwigen1829@wavecable.com

RAINBOW MEADOW FARMS

434 Cispus Rd
Randle, WA 98377
360,947-9853
larrychristensen@gmail.com

WISCONSIN

BAA BAA ACRES

ROD & TERRY ANDERSON

W5769 Cty Rd S
Juneau, WI 53039
920-386-2540
andersons1978@att.net

AMY BARTH

827 Rock Church Rd
Livingston, WI 53554
608-341-8286
sunset@yousq.net

4 SISTERS FARM

AMY BEDARD

W9375 School Rd
Hortonville, WI 54944
920-915-3380
amy.bedard@appletm.org

JECONIAH BEYRER

E8298 1205 Ave
Colfax, WI 54730
715-658-1555
3ofthem@chibardun.net

BIRSHBACH'S HAMPS

STEVE BIRSCHBACH

802 E Pioneer Rd
Fond-Du-Lac, WI 54935
920-251-4919
stbirsch80@hotmail.com

BLUME CLUB LAMBS

BRANDON & MIKE BLUME

2225 Cty Rd A
Mineral Point, WI 53565
608-341-6302
blumer1989@hotmail.com

W 275 N 7833

CAITLIN & CLARISSA CULL

Camp Whitcomb Rd
Hartland, WI 53029
262-297-2697

GEORGSON FAMILY

LA VERN, LYNN, & ANDREW

N3871 Scheppert Rd
Fort Atkinson, WI 53528
920-674-6514
lgagteacher@hotmail.com

DREAM HILL FARM

BRIAN & JOAN GERTH

N 8389 660th St
Riverfalls, WI 54022
715-308-2222

CLM SHOW LAMBS LLC

CRAIG GREEN

1913 Wayside Road
Greenleaf, WI 54126
920-371-7233

COLBY & LIBBY HASHEIDER

510114 A County Rd C

Sauk City, WI 53583
608-393-3686
jennifer.hasheider@southprairiehealthcare.org

SARA, JACEE & JUSTIN

JOHNSON

N 6196 Johnson Road
Delavan, WI 53115
608-3933-3686
ewehoo_200@yahoo.com

RICHARD KRACKOW

PO Box 233
Arcadia, WI 54612
608-343-2899
rkdrealt@triwest.net

LANGER FARMS

MICHAEL LANGER

W-8124 570Th Ave.
Ellsworth, WI 54011
715-273-3439
jjmlanger@gmail.com

LINDOW FAMILY

N 5147 Hiline Ave
Chili, WI 54420
715-683-6897
anklindow@yahoo.com

GREENWAY FARM

JON & LAIRD MORK

W6402 690th Ave
Beldenville, WI 54003
715-222-0700
morkslb@gmail.com

IMPACT HAMPS

BRIAN REILLY FAMILY

17435 Cty Rd W
Shullsburg, WI 53586
608-482-2697
breilly.impact@gmail.com

RIDGEVIEW FARM

KEVIN RIEMER & FAMILY

12160 N Wauwatosa Rd
Mequon, WI 53097
262-512-0094
kevinriemer@aol.com

STEVA ROBINSON

PO Box 95

Belmont, WI 53510
574-527-0967
steviarobinson@gmail.com

MJR HAMPSHIRE

MARK ROEMBKE FAMILY

3504 Country Aire Dr
Cedarburg, WI 53012
262-707-0032
mjrhamps@hotmail.com

R J ROEMBKE FAMILY

3696 Country Aire Dr
Cedarburg, WI 53012-9206
262-377-1491
rsrmke@att.net

RUPNOW FAMILY HAMPSHIRE

SUSAN RUPNOW

430 Highview Lane
Columbus, WI 53925
715-590-4660
profshowsupply@aol.com

SAMANTHA & CONNOR SCHULTZ

452 Arbor Dr
Juneau, WI 53039
920-948-9481
andersons1978@att.net

BRYCE SHERWIN

W4498 455th Ave
Ellsworth, WI 54011
7150273-4311
gmklecker@hotmail.com

BRANDT & BECKETT SPILDE

2800 Wildflower Road
Stoughton, WI 53589
608-772-3697
kentspilde@icloud.com

TODD & KELLY SQUIRES

32578 Fulda Ave
Camp Douglas, WI 54618
608-772-3697
kentspilde@icloud.com

AL STECK FAMILY

N6745 Cty Rd M
Holmen, WI 54636
608-792-9473
asteck@centurytel.net

JEOFFERY STEVENS

6402 Buss Rd
Clinton, WI 53525
608-751-2539
dr.jeoffstevens@gmail.com

SUEHS HILLSIDE HAMPS

SUEHS FAMILY

E5372 Swan Rd
Manawa, WI 54949
920-538-2710
mksuehs@wolfnet.net

NATHAN, LAUREN & DAVID THOMPSON

2628 110th Avenue
Woodville, WI 54028
715-698-4311
kthompson@bwsd.k12.wi.us

METRO HAMPS

THORSON FAMILY

W 460 Sydo Rd
Columbus, WI 53925
920-344-1235
metrohamps@hotmail.com

UNIVERSITY OF WISCONSIN

C/O TODD TAYLOR

W 4857 Meek Rd
Arlington, WI 53911
608-846-5858
toddtaylor@wisc.edu

JOSHUA VOIGT

W6644 COUNTY RD W
JUNEAU, WI 53039
920-210-1965
hickjv@gmail.com

MARK & KAREN VORNHOLT

W7152 Tree Rd
Neillsville, WI 54456-8697
715-743-7152
fairviewfarm@gmail.com

CORNERVIEW CLUB LAMBS

ROY & DOUG WILSON

W5729 Cr Rd B
Shawano, WI 54166
715-526-7636
cvclublambs@hotmail.com

ALF HAMPSHIRE

2417 N Stark Rd
Janesville, WI 53545
608-449-0707
alfhamp@centurytel.net

UWRF FARMS

C/O MIKAYLA MAROSZEK

129 S Glover Rd
River Falls, WI 54022
715-850-2477
mikayla.maroszek@my.uwrf.edu

DIRECTORY CONTINUED

WEST VIRGINIA

BRUSHY MOUNTAIN LIVESTOCK

TRAVIS & TERESA HEAVNER
623 Skiles Pitsenbarger Rd
Franklin, WV 26807
304-358-2511
theavner40@hotmail.com

FORT DONNALLY FARM

JOHN JOHNSTON
HC 40 Box 16
Lewisburg, WV 24901
304-645-2769

JONATHAN RITCHIE

223 Hill Top View LN
Ridgely, WV 26753
304-726-4230

STONE MEADOW FARM

JOHN TOMLINSON
2789 Davis Stuart Rd
Lewisburg, WV 24901
304-661-6985

WYOMING

BERG FAMILY HAMPSHIRE

3744 Chuckwagon Rd
Cheyenne, WV 82009
307-638-8103

brenda.berg44@gmail.com

WESTON BORCHER

1017 Rd 14
Powell, WY 82435
307-272-5285
borcher_23@hotmail.com

SPY CLUB LAMBS

MORGAN SANCHEZ &
BROOKE HOWARD
199 Palamino
Bear River, WY 82930
307-799-8780
spyclublambs@live.com

BUTLER BROTHERS LIVESTOCK

AUSTIN, DAWSON & DALTON
BUTLER
PO Box 40
Hulett, WY 82720
307-467-5698
butlerbroslivestock@gmail.com

UNIVERSITY OF WYOMING

LARAMIE RESEARCH &
EXTENSION CENTER
470 Hwy 230
Laramie, WY 82070
719-314-6571
kkoepke@uwyo.edu

JEFFREY CLUB LAMBS

SHAWN JEFFREY
2580 Indian Hill Rd
Cheyenne, WY 82009
307-421-7354
wywindyacres@gmail.com

JODY, ABBY, JARELL & BLAKE KETTERLING

10 Megans Way
Gillette, WY 82718
307-257-4934
ketterlingfamilysheep@gmail.com

BAM SHEEP CO

BRYCE MCKENZIE
550 South Pinnacle Dr
Buffalo, WY 82834
307-217-1510
bamsheepco@yahoo.com

ROBERT M & SHEA ROOF

390 Road 146
Carpenter, WY 82054
307-649-2402
bob.roof@gmail.com

STEWART CLUB LAMBS

STEWART FAMILY
13721 Meadow Lane
Evansville, WY 82636
307-237-3995
jackson.stewart@truecos.com

HOWELL CLUB LAMBS



*For sale Ram Lambs
RRNN sired by:*

Fuzz Ball

Howell Club Lambs

8582 Township Line RD | Celina, OH 45822

PH. 419-953-0238 | Larryhowell@Bright.net

www.Howellclublambs.com

HAMPSHIRE HAPPENINGS

We continue to develop an extensive email list of Hampshire members that receive weekly emails from the AHSA office. These emails are intended to keep the membership updated on items of interest. We do solicit newsworthy articles and information from our Hampshire membership to include in these weekly emails. We may also include the sale and show dates if you are not receiving these emails and would like to please send an email to asregistry@gmail.com.



Wedekind Manufacturing
Worth Your Money Since 1965!



See our prices online
Qualitylivestockfence.com
402-447-2700
doug@qualitylivestockfence.com
Five-Year Warranty
(except custom orders)

With

SydellTM

You Can See...

CALL AHEAD FOR
FREE DELIVERY TO
SHOWS

CLEMSON UNIV.

**The Light of
at the End of
the Tunnel for
Your Sheep/Goat
Equipment Needs!**

Sydell Inc., 46935 SD Hwy 50, Burbank, SD 57010

Phone: (605) 624 - 4538 Toll Free: 1-800-842-1369

Website: www.sydell.com

Email: sydell@sydell.com

KLEINERT HAMPSHIRE

"Quality Breeding Lasts Forever"

THANKS TO OUR BUYERS!

BURNS-HALE LIVESTOCK, LOYAL & DEBORAH - OREGON

CAMILA ANDRE CARTER - OKLAHOMA

TOP NOTCH LIVESTOCK, MATT PICKNEY - NEW YORK

EBERT SHEEP FARMS - KANSAS

JEFF BAUMAN FAMILY - MARYLAND

LANE BROOKS - TENNESSEE

TED VAN HORN - KANSAS

WISE HAMPSHIRE - OHIO

BRISTOL BROWN - TENNESSEE

HANDLEY SHOW STOCK - INDIANA



KLEINERT 5041
(MILLER 175 DAUGHTER)

THANK YOU TO WISE HAMPSHIRE FOR SELECTING THIS EWE!



MILLER 0-470
MERCY X MILLER P-4203



MILLER 0-175
MAKER X MILLER P-1435

SEE MORE AT WWW.KLEINERTHAMPSHIRE.COM
+ CONTACT FOR SEMEN AVAILABILITY.

MIKE KLEINERT | KLEINERT HAMPSHIRE
2873 N 1600 EAST RD. | CLIFTON, IL 60297

H: 815.694.2727 | C: 815.383.0962 | KLEINERTHAMPSHIRE@YAHOO.COM | WWW.KLEINERTHAMPSHIRE.COM

HAMPSHIRE HERITAGE HONORS RECOGNITION APPLICATION

The American Hampshire Sheep Association is honoring long-time Hampshire breeders.
In many cases this will involve multiple generations within a family.
Please complete the form below and return to the AHSA office by October 25th.

- Heritage Honors Rules and Info:
1. Must be families continuously raising Hampshires.
 2. Must apply by October 25th of each year.
 3. Awards will be given at the AHSA annual meeting in Louisville, Kentucky.
 4. Applicants must provide proof of when the Hampshire flock was established.
 5. Applicants must be current Senior or Junior members of the AHSA.

Name: _____ Farm Name: _____

Address: _____ City: _____ State: _____ Zip: _____

Phone: _____ Email: _____

What is the Name on your AHSA Membership: _____
(if different from your own name, i.e. farm name, joint owners, etc)

How long have you been continuously raising Hampshires: *(mark box that applies to your highest number of years)*

- 5 years 10 years 20 years 30 years 40 years
 50 years 60 years 70 years 80 years or more

Please include a writeup with the following information included:

When/Where did you first start with sheep? and how did you acquire them?

Who was responsible for encouraging you to start breeding Hampshires?

How many previous generations in your family have raised Hampshires?

If any, please list names, dates started and location of flock.

How many current generations are involved with Hampshires?

If any, please list names, dates started and type of involvement.

Have you or your family received any significant Local, State, Regional or National awards or recognitions within the sheep industry?

Have any animals from your flock earned Champion honors at the Local, State, Regional or National levels?

How have you supported the AHSA and the sheep industry?

What is your involvement with the sheep industry today? and what is the current state of your Flock?

Please send along no more than 20 items: photos, old registration papers, or other documents authenticating the existence of a Hampshire flock owned by your family?

Please provide captions for each photo/item.

Make sure to return your application to the AHSA Office by October 25th!

AWARDS WILL BE GIVEN AT THE AHSA ANNUAL MEETING IN LOUISVILLE...

SO MAKE PLANS TO ATTEND, HOWEVER IF YOU ARE UNABLE TO BE AT THE MEETING THEY WILL BE MAILED TO YOU AFTERWARD.

HAMPSHIRE IN 1998

THIS ISSUE WE LOOK BACK AT HAMPSHIRE IN 1998. THE PRESIDENT IN 1998 OF THE AHSA WAS BILL DOHRMANN FROM IOWA WITH LELAND WHEATON FROM MICHIGAN THE VICE-PRESIDENT. THE OTHER DIRECTORS WERE JAKE FALLESEN, OREGON, ALVIN MCNEIL, UTAH, JERRY FITCH, OKLAHOMA, ROGER HAUGEN, MINNESOTA, VIRGIL WILTZ, KANSAS, TOM HUBER, GEORGIA, TIM FLEENER, PENNSYLVANIA, JEFF HELD, SOUTH DAKOTA AND DAVID LIFER, OHIO.

THE TOP SELLING HAMPSHIRE RAM AT PUBLIC AUCTION IN 1998 WAS THE CHAMPION RAM AT THE NATIONAL HAMPSHIRE SALE DURING THE MIDWEST STUD RAM SALE. HE WAS CONSIGNED BY GORDENEER HAMPSHIRE, MICHIGAN AND SOLD FOR \$8500. THIS WAS THE HIGHEST SELLING RAM OF ALL BREEDS IN 1998.

THERE WERE 9,368 HAMPSHIRE REGISTERED IN 1998 WHICH WAS THE THIRD HIGHEST BREED IN TOTAL REGISTRATIONS. THE TOP FIVE BREEDERS IN TOTAL REGISTRATIONS IN 1998 WERE JOE CABANISS WITH 368. SECOND WAS CHARLES KIRLIN WITH 108 FOLLOWED BY SOUTH DAKOTA STATE UNIVERSITY WITH 96 HEAD. PETER & CHARLES BOBENDRIER WERE FOURTH WITH 90 AND NORTH DAKOTA STATE UNIVERSITY ROUNDED OUT THE TOP FIVE REGISTRIES WITH 79 HEAD.

THE NATIONAL HAMPSHIRE SHOW WAS HELD DURING THE NORTH AMERICAN INTERNATIONAL LIVESTOCK EXPOSITION WITH TOM GILLMORE SERVING AS THE JUDGE. THE CHAMPION RAM WAS SHOWN BY PETER & CHARLES BOBENDRIER, MINNESOTA. RESERVE GRAND CHAMPION RAM WAS SHOWN BY RICHARD KRACKON, WISCONSIN.

THE CHAMPION EWE WAS SHOWN BY RICHARD KRACKON, WISCONSIN AND THE RESERVE CHAMPION EWE WAS EXHIBITED BY PETER & CHARLES BOBENDRIER, MINNESOTA. PETER & CHARLES BOBENDRIER WON THE FLOCK CLASS AND WERE NAMED THE PREMIER EXHIBITOR. THERE WERE 160 HEAD EXHIBITED IN THE 1998 NATIONAL HAMPSHIRE SHOW.

THE NATIONAL HAMPSHIRE JUNIOR SHOW WAS ALSO HELD DURING THE NORTH AMERICAN. THE CHAMPION RAM WAS SHOWN BY ELYSSA JOHNSON. ILLINOIS WITH JAIME FONGHT, PENNSYLVANIA SHOWING THE RESERVE CHAMPION RAM. THE CHAMPION EWE WAS SHOWN BY MEGAN & BRANT WHEATON, MICHIGAN AND LEANN HALL, ILLINOIS EXHIBITED THE RESERVE CHAMPION EWE. THERE WERE 86 HEAD SHOWN AT THE 1988 NATIONAL HAMPSHIRE JUNIOR SHOW.

CALLING JUNIOR MEMBERS: AJHSA AMBASSADOR PROGRAM

Since the NAILE last November, eight youth have represented the Hampshire breed as ambassadors. In their role, they have planned activities and events for Hampshire junior members at the NAILE, National Hampshire Sale in Sedalia and the All-American Junior Show. They also have promoted the breed at events, on social media and in industry publications.

These ambassadors include:

- President Danielle Houghtaling from Doland, South Dakota
- Vice President Jenna Sullivan from Moodus, Connecticut
- Secretary-Treasurer Morgan Hauger from Connersville, Indiana
- Campbell Coyle from Danville, Kentucky
- Amanda King from Petaluma, California
- Faith Houghtaling from Doland, South Dakota
- Zachary Lyman from Dracut, Massachusetts
- Kaylan Risacher from Wright, Minnesota

Except for the officers, these board members are serving one year terms. While they are eligible to re-apply for their positions, others may apply for consideration. Youth that are a paid member of the AHSA or the AJHSA and between the ages of 13 and 21 are encouraged to apply. The application is due Sept. 30, 2018, with successful applicants being notified before the North American International Livestock Exposition in Louisville, Kentucky.

We look forward to seeing you application!

AJHSA Board Proposed Guidelines

- Any youth between the ages of 13 and 21 years old, who is in good standing with the American Junior Hampshire Sheep Association may apply to serve on the American Junior Hampshire Sheep Board of Directors.
- The AJHSA Board of Directors will be appointed by the AHSA Board of Directors. Once appointed, they will serve a one year term, except for those appoint to officer roles, who will serve two-year terms.
- The AJHSA Board of Directors shall select from their numbers a President, Vice President and Secretary/Treasurer, whose roles are defined below.
- The AJHSA Junior Board President will preside at official AJHSA meetings and conference calls, appoint committee chairs and acts at liaison with AHSA Youth Committee.
- The AJHSA Junior Board Vice President will assume and perform the duties and responsibilities of the President during the President's absence.
- The AJHSA Junior Board Secretary/Treasurer will maintain records of all meetings of the AJHSA and work with the AHSA Executive Director to develop and maintain a budget for the AJHSA.

- AJHSA Board Members will be expected to complete the following requirements:
- Must attend and participate in a leadership role at one National Hampshire Event. These events, where the AJHSA Board will meet, include:
- North American International Livestock Exposition in Louisville, Kentucky
- March/April Meeting, Location TBD
- National Hampshire Sale in Sedalia, Missouri
- All American Junior Show
- Attend sheep functions within their state and region to promote the Hampshire breed. At these events, AJHSA logowear should be worn.
- Promote AJHSA through written articles, blogs, exhibits and photographs using email, Facebook, Twitter and other media.
- Participate in conference calls and respond to email, texts and other communication.
- Conduct themselves in a professional manner when representing the AJHSA.

American Junior Hampshire Board Application

Name: _____ Date of Birth _____

Address: _____

City: _____ State: _____ Zip: _____

Phone: _____ Email: _____

American Junior Hampshire Sheep Association Member Number _____

----- You may use extra pages as necessary -----

- Discuss how you became interested in raising Hampshire sheep and becoming a member of the AJHSA.

- Tell us about your leadership involvement and how your experiences would positively influence the AJHSA Board of Directors.

- Describe two things regarding the junior association that you would change or add to make the association more accessible and engaging for youth members.

- Please discuss any additional qualifications, here.

Requirements:

- Be a member of the AJHSA or AHSA
- Currently age 13-21 as of Jan. 1, 2018
- Completed application postmarked or emailed by Sept. 30, 2018

Junior Board Members Responsibilities

- Must attend and participate in a leadership role at one National Hampshire Event. These events, where the AJHSA Board will meet, include:
 - North American International Livestock Exposition in Louisville, Kentucky
 - A March/April Meeting, Location TBD
 - National Hampshire Sale in Sedalia, Missouri
 - All American Junior Show
- Attend sheep functions within their state and region to promote the Hampshire breed. At these events, AJHSA logowear should be worn.
- Promote AJHSA through written articles, blogs, exhibits and photographs using email, Facebook, Twitter and other media.
- Participate in conference calls and respond to email, texts and other communication.
- Conduct themselves in a professional manner when representing the AJHSA.

I have completed the application in its entirety. My parent/guardian and I have read all the requirements and responsibilities and understand that a junior board member may be removed from service for not completing the responsibilities of junior board member.

Print applicant's name _____

Applicant's signature _____ Date _____

Please return completed application postmarked by Sept. 30, 2018, to:

Jeff Ebert
American Hampshire Sheep Association PO Box 231
Wamego, KS 66547
785-458-9174
asregistry@gmail.com



**WE HAVE AN EXCELLENT SELECTION OF
YEARLING HAMP RAMS AVAILABLE.
INDIVIDUAL PICTURES & STATS ARE
AVAILABLE. FREE DELIVERY TO THE MIDWEST SALE.**

**Peterson Sheep Co.
Doug & Lindi Peterson**

803-23rd Street N.E. - Lemmon, SD 57638 - (701) 376-3115 - peter@sdplains.com

KING DIAMOND RANCH

PLACING THE NEXT PIECE IN THE PUZZLE TAKES STRATEGY...
MAGIC MIKE PROVES STRATEGY PAYS OFF



WE SELECTED MAGIC MIKE AS THE NEXT PIECE TO MAKE OUR HAMPSHIRE EVEN MORE FUNCTIONAL ADDING MORE BODY SHAPE, MUSCLE DIMENSION AND FOOT SIZE. WHILE HIS FIRST SET OF LAMBS ARE LATE BORN, THEY ARE FAST GROWING AND CONSISTENT.

Watch for our entries in
National Hampshire Show & Sale in Sedalia

Did you know? We started our Hampshire flock in 1979
with the purchase of three Hogg-hubbard brood ewes.

ARNOLD, DINA, COURTNEY AND AMANDA KING
DINAMKING@HOTMAIL.COM | 707.322.3469
VISIT OUR FACEBOOK PAGE - KING DIAMOND RANCH

OBITUARY FOR VERNON L DEAL **JUNE 26, 1926 - MAY 09, 2018**

Vernon L. Deal, 91 of Navarre passed away Wednesday, May 9, 2018 following a period of declining health. He was born at Navarre, Oh., the son of the late Logan and Elizabeth Reidenbach Deal and was life resident of the area An Army Veteran and member of the Brewster American Legion Post #160, he retired from Norfolk and Southern Railway where he was a machinist. He enjoyed farming and raising Hampshire sheep. Surviving are his wife, the former Frieda Eileen Levengood Deal, whom he married June 26, 1955. Two daughters and son in law, Denise Deal of Navarre and Debbie (Mark) Shaw of Fairlawn. A brother Robert is deceased. Private family burial will take place in South Lawn Cemetery, Beach City. Memorials may be made to Brewster American Legion Post #160, c/o Andy Codispoti, 260 6th St SW, Brewster, Oh 44663

INDEX TO HEARTBEAT ADVERTISERS

B
BOBENDRIER BOYS |
BOBENDRIER HAMPSHIRE **INSIDE FRONT COVER**

C
CHAPIN HAMPS **PAGE 8**

D
DOUBLE F CLUB LAMBS **PAGE 14-15**

E
EBERT SHEEP FARM **PAGE 27**



RACK OF LAMB RECIPE INGREDIENTS

6 garlic cloves | 3 tablespoons fresh rosemary leaves
2 tablespoons extra-virgin olive oil | 1 rack of American lamb, frenched (1 ½ to 2 pounds)
Kosher salt and freshly ground pepper | 1 medium delicata squash (about 1 pound)
12 ounces Brussels sprouts, trimmed and halved (keep any loose leaves)
2 red Anjou or Bartlett pears, halved, stemmed and cored, and each cut into 8 wedges
2 tablespoons extra-virgin olive oil | 2 tablespoon maple syrup
Kosher salt and freshly ground pepper | 2 handfuls fresh parsley leaves

DIRECTIONS

Preheat the oven to 475°F.

For the lamb: In a mini food processor (or with a knife), finely chop the garlic, rosemary, and olive oil until the garlic is a paste and the rosemary is a mix of some finely chopped and some larger leaves. Season the lamb rack on both sides with salt and pepper, then rub with the garlic-rosemary mixture. Set aside at room temperature for about 1 hour.

For the vegetables: Halve the squash lengthwise and scoop out the seeds. Cut it into 1/2-inch-thick moon-shaped slices. Pile the squash, Brussels sprouts, and pears in the center of a large rimmed baking sheet. Drizzle with olive oil and maple syrup, and sprinkle with a few big pinches of salt and several grinds of pepper. Toss to coat evenly, and spread the mixture in a single layer on the baking sheet. Place the lamb meaty side up in the center of the pan, covering some of the vegetables and pears.

Roast until the internal temperature reaches 130 to 135°F on an instant-read thermometer for medium-rare, 10 to 15 minutes. (The internal temperature will increase to 145°F out of the oven.) Transfer the rack to a large platter and cover loosely with foil to rest for 10 to 15 minutes.

Roast in the upper third of the oven until the vegetables are tender and the internal temperature of the lamb reaches about 120°F on an instant-read thermometer, 25 to 30 minutes. Switch the oven to broil and position the sheet pan so that the top of the lamb is about 4-inches from the broiler. Broil until the lamb and vegetables are nicely browned on top, 3 to 5 minutes.

Transfer the rack to a carving board, tent it with foil, and let rest for 10 minutes. Loosen the pears and vegetables from the baking pan with a spatula, scraping up any browned bits from the pan, and toss them together with the parsley. Transfer to a warmed serving platter.

Carve the rack between the rib bones and transfer to the platter, nestling it over the vegetables and pears. Serve immediately, with Syrah wine.

F
FINDER CLUB LAMBS **PAGE 27**

H
HELD HAMPSHIRE **PAGE 25**

HERRIG HAMPSHIRE **PAGE 23**

HIGHLAND HAMPSHIRE | KLUG **PAGE 7**

HOWELL CLUB LAMBS **PAGE 56**

K
KETCHAM'S **PAGE 9**

KING DIAMOND RANCH **PAGE 65**

KJELDGAARD HAMPSHIRE **PAGE 37**

KLEINERT HAMPSHIRE **PAGE 58**

M
MCNEIL HAMPSHIRE **PAGE 40**

MIDWEST STUD RAM SALE **PAGE 16**

MUMM HAMPSHIRE **PAGE 21**

N
NELSON HAMPSHIRE **PAGE 28**

P
PETERSON SHEEP CO. **PAGE 64**

PINE LAWN FARMS **PAGE 32**

R
RIKOW HAMPS **INSIDE BACK COVER**

S
SHEAR WE GO FARM | SULLIVANS **BACK COVER**

SOUTH DAKOTA STATE UNIVERSITY **PAGE 22**

SYDELL INC. **PAGE 57**

W
WEDEKIND MANUFACTURING **PAGE 56**



A Salute to our Customers!



Lot 3 - Rikow 7046

BD: 3/6/2017 • Homefire x Rikow 2031

Thanks to Spoonster Hamps for their purchase of this exciting yearling ewe!

Lot 12 - Rikow 8033

BD: 1/8/2018 • Home Made x Rikow 3049

Thank you to Hand Hampshires for purchasing this elite female!



RIKOW-7027

With the unfortunate loss of Home Made, we put 7027 to work for fall lambs. He's earning his spot in our stud ram line-up!

Thank you!

To all our 2018 Rikow Hamps Online Sale buyers and bidders! We wish you the best of luck with your new purchases. - Dick

Steve Birschbach, WI - Eric Buchberger, IA - Jesse Robbins, UT
Thomas Foster, MN - Bobby Spoonster, MO - Jamie Lindow, WI
Larry Hand, MO - Gary Klug, IA - Jim Sappington, MO

We have a great set of rams available for sale at the farm!

Priced to fit everyone's budget!

RICHARD KRACKOW

ARCADIA, WI • RKDREALT@TRIWEST.NET • PH: 608.343.2899

WWW.RIKOWHAMP.COM



HAMPSHIRE HEARTBEAT

PO Box 21, 305 Lincoln

Wamego, Kansas 66547

Change Service Requested

SHEAR WE GO FARM

2018 Is Just The Beginning!

**"EPIC"
SULLIVAN 1802**



**FALL RAM OUT OF
2016 NATIONAL
CHAMP HAMP EWE**

NEW ENGLAND IS GROWING SOME POWERFUL HAMPS!

CHECK OUT WHAT'S AVAILABLE FOR SALE!

**SULLIVAN 1814
LATE FEB EWE LAMB**



**SULLIVAN 1707
2017 RES. CHAMP FITTED HAMP RAM NAILE**



**SULLIVAN 1815
LATE FEB EWE LAMB**



CALL OR VISIT: ROGER, LARA, JENNA GRIFFIN & GRANT SULLIVAN

74 Great Hillwood Road, Moodus, CT | 860.662.6070 | rogersredbarn@yahoo.com | www.facebook.com/shearwegofarm